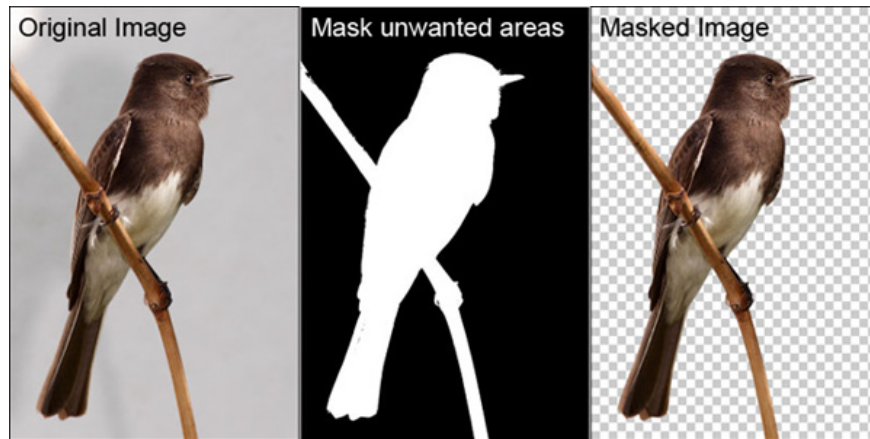


How to use Photoshop CS5 - Part 10: Use Layer Mask and Vector Mask to delete the background image

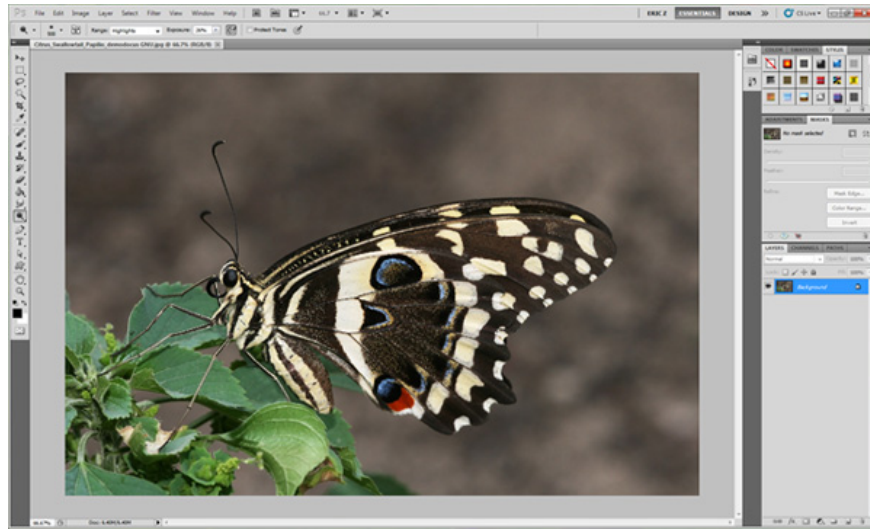
In the image processing stage, removing background image is one of the most complicated and time consuming tasks. There are many ways to do this, and in the following article, we will show you how to do this with Layer Masks and Vector Masks.

What is a Layer Mask?

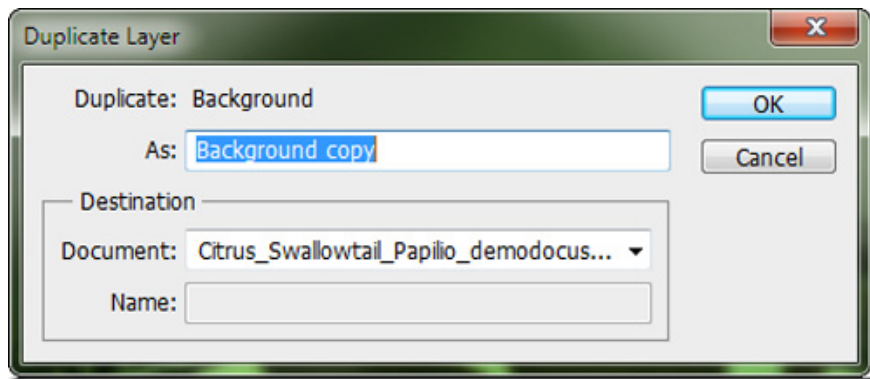
It can be understood in a simple way that this is a hidden image layer, with a 'notification' function for *Photoshop* where 'concealing' the selected class information. More precisely, there is an alpha channel type used to cover the details on the image to be processed, simply because these details have been separated from the image by other channels.



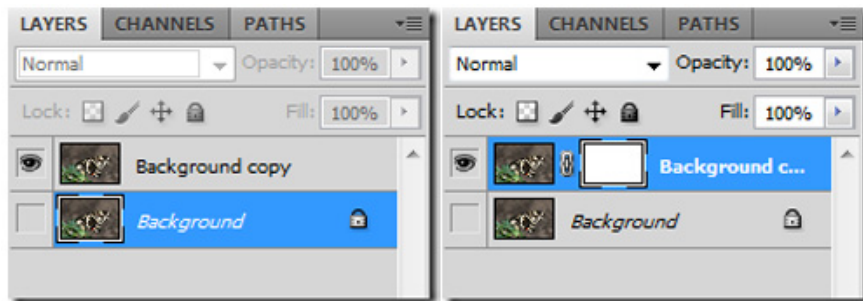
Simple method: How to use Layer Mask?



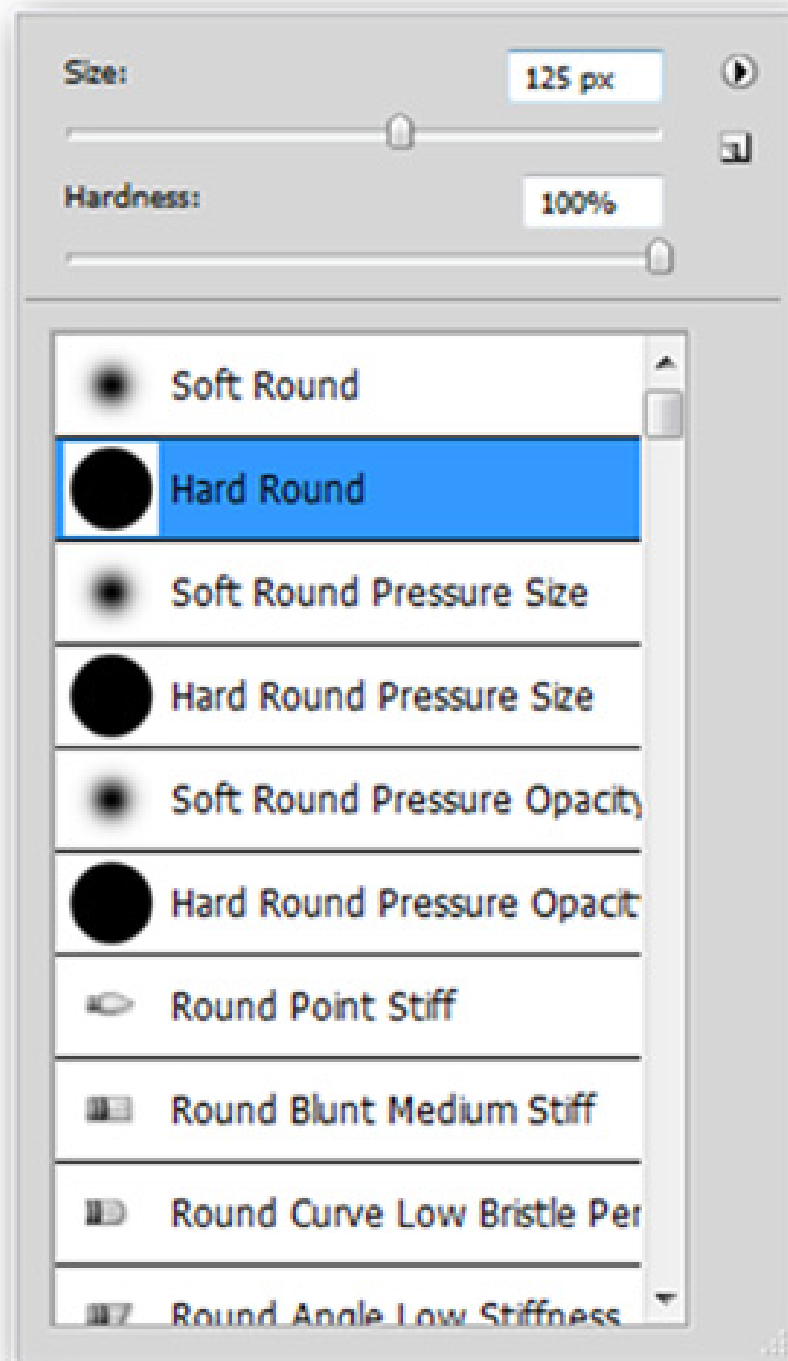
Open the image to be processed, then create *Duplicate Layer* . The program will automatically rename the new layer to *Background copy* , click OK:



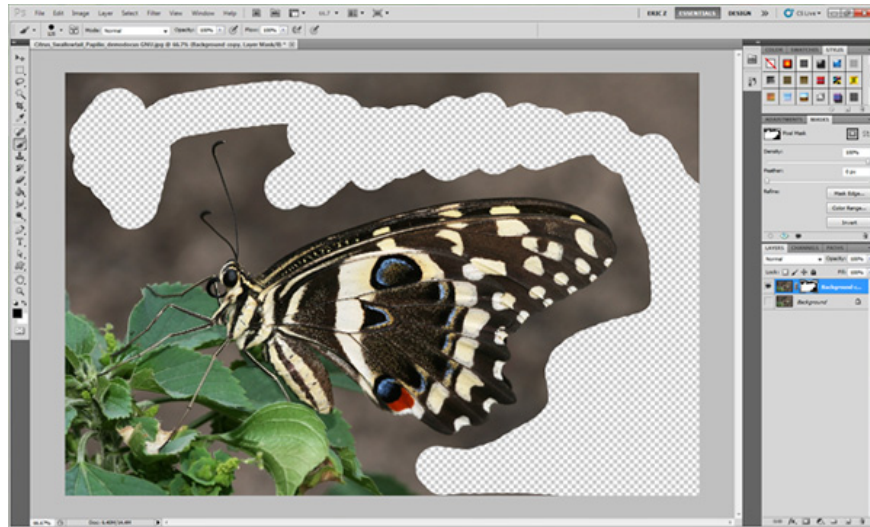
Then select the icon to temporarily hide the original *Background* layer, as shown on the left below:



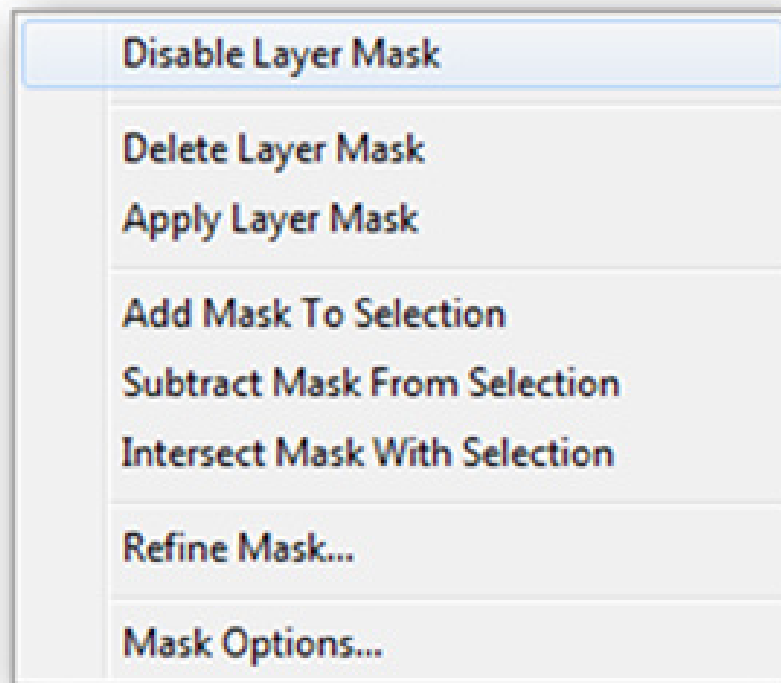
Click to create a new coated surface on this layer. Make sure your *Layer* panel will look like the right image. After that, press B to select the *Brush Tool*, right-click anywhere on the image to adjust the properties, thickness and size. The default *Hard Round level* is quite suitable in this case, while keeping the item *Hardness* is 100%:



You should pay attention to *Foreground / Background* color mode. Before proceeding, press the D shortcut to switch between these black and white colors. On this new overlay, where you hover, the color will disappear, as shown below:



Unlike using the Eraser tool, using these mask layers can be turned on or off, allowing users to quickly return to the original image processing:



Depending on the picture, the steps required require different meticulousness and accuracy:



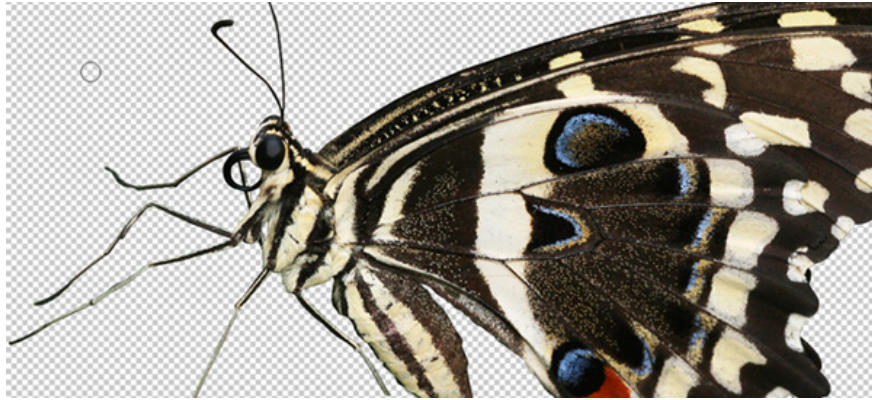
Let's start with the most difficult details, multicolored, close to the main object to handle, here is the butterfly shape:



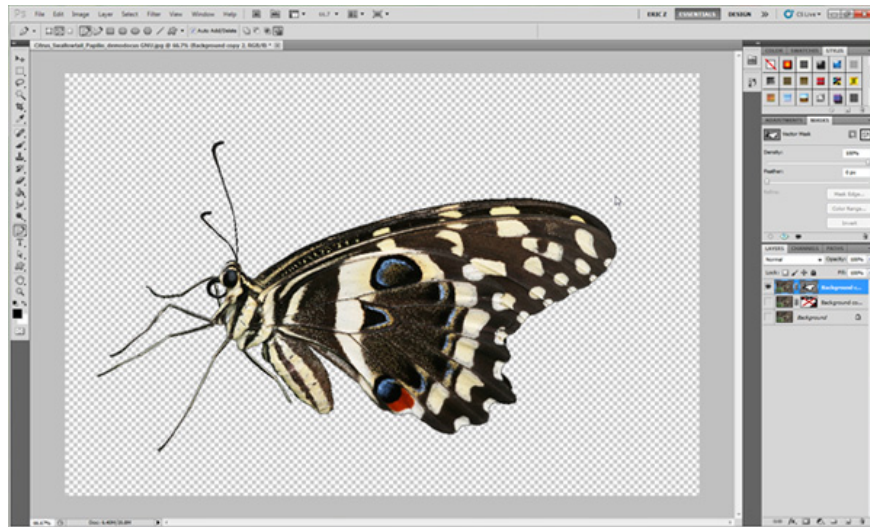
Once you've finished processing the small area, resize the *Brush* to manipulate the remaining areas:



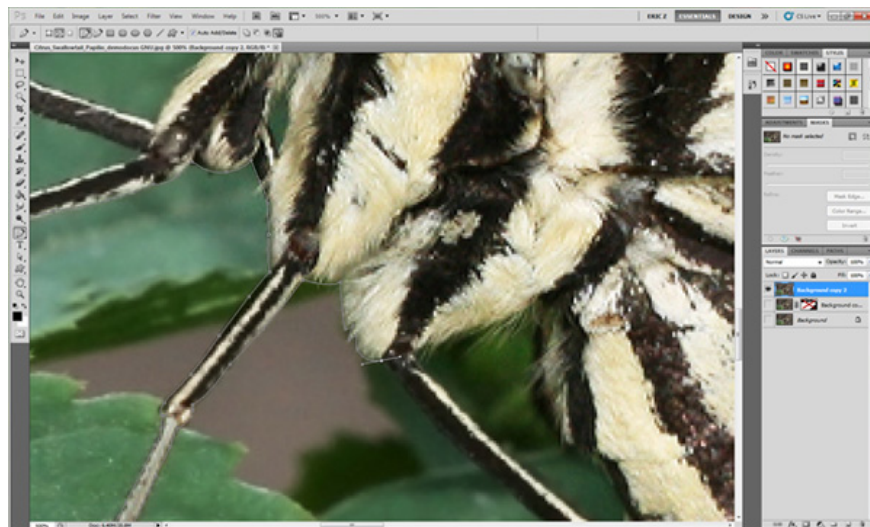
And this is our result after the implementation of the smallest detail:



Use Vector Mark to delete Background:



The following steps require users to have experience in handling and applying with *Pencil* tool:



Vector masks are not very different from *Layer Mask*, except using the original vector to create the Alpha mask channel layer. To create these original vectors, we will use the Pen to set up an area covered with the area to work:

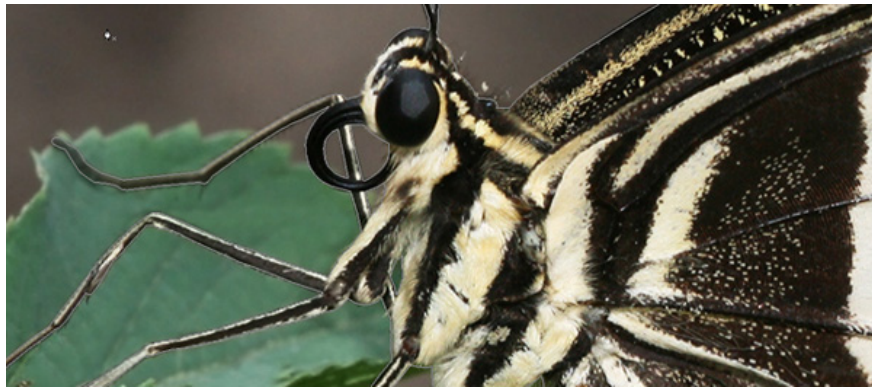


Press P to select the Pen tool, then cleverly draw close to our main part, trying to ignore the sharp and small corners:

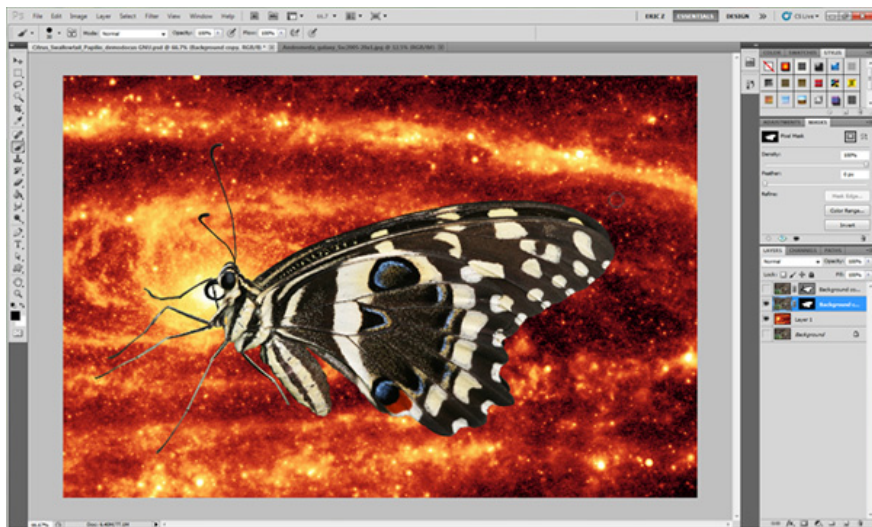




When you complete this process, your image and selection layer will look like this:



Then, choose *Layer > Vector Mask > Current Path* to create *Vector Mask* from the current *Work Path* section. The current selection becomes the *Vector mask*, the process of removing the background image is not difficult:



In addition, you can refer to the following video tutorials:

Good luck!

You finished reading the article "**How to use Photoshop CS5 - Part 10: Use Layer Mask and Vector Mask to delete the background image**" edited by the [TipsMake](#) team. We hope this article has provided you with many useful tech tips and tricks. You can search for similar articles on tips and guides. Thank you for reading and for following us regularly.
