

How to use MathType to write math formulas

MathType is a Math formula editor, suitable for most office tools, making it easier to edit Math content.

If you are a teacher, student, or Maths lover, you should definitely not ignore the MathType software. MathType is a software for drafting math formulas, complete with Math symbols. Math expressions and mathematical equations are also provided by MathType to users.

In particular, the tool can be used on text editors such as Office, OpenOffice, Gmail, TeX, etc. Users while entering content can change the color, adjust the font to match the entire content. Page. The following article will guide you how to use MathType to type in the Math formula.

1. Instructions for inserting Math formulas in Word 2016
2. How to insert Math expressions on Word 2007
3. How to fix Excel error 'The formula you typed contains an error'

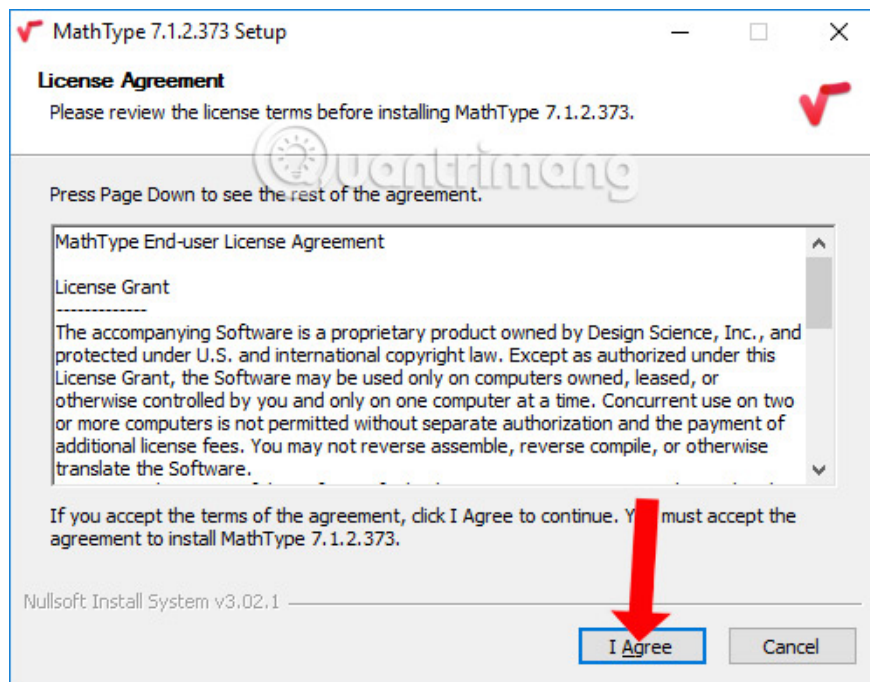
How to type math formulas with MathType

Step 1:

Click on the link below to download MathType to your computer and then install it on your computer. During the installation process, exit all existing office tools on the computer

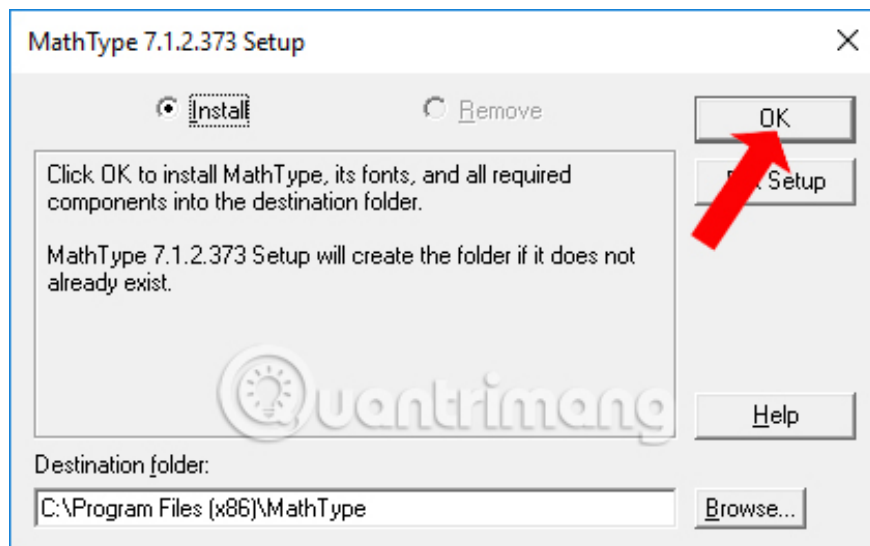
1. Download MathType software

At the installation interface, first click on the **button I Agree** agree to the installation terms, then click on the Next button.



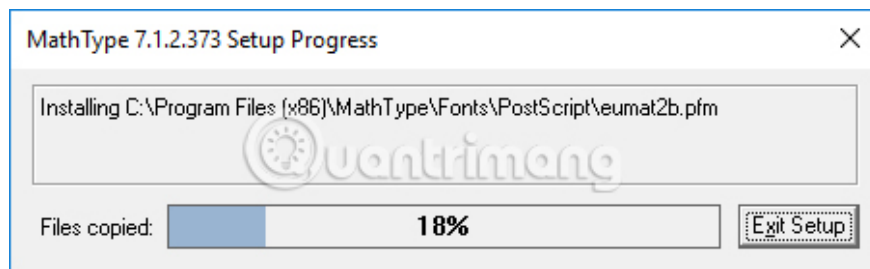
Step 2:

Next the software will create the MathType folder on the computer. By default, it will be created in drive C, if you want to change, click the Browse button to select another folder. If not, press the Ok button right above to continue.

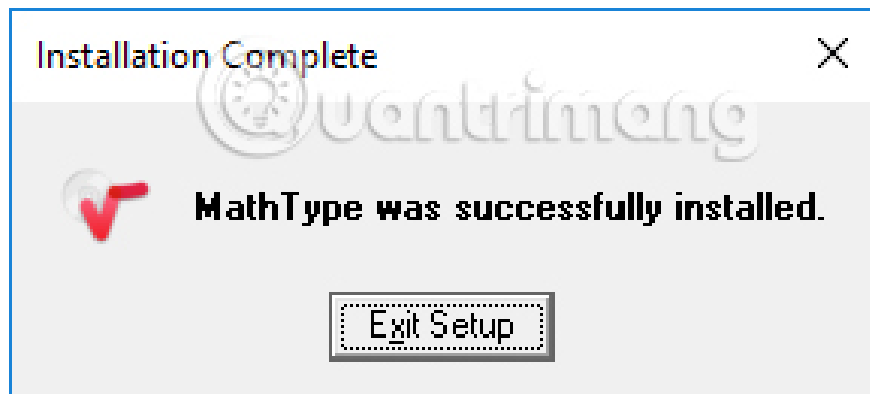


Step 3:

Then MathType installation will take place.

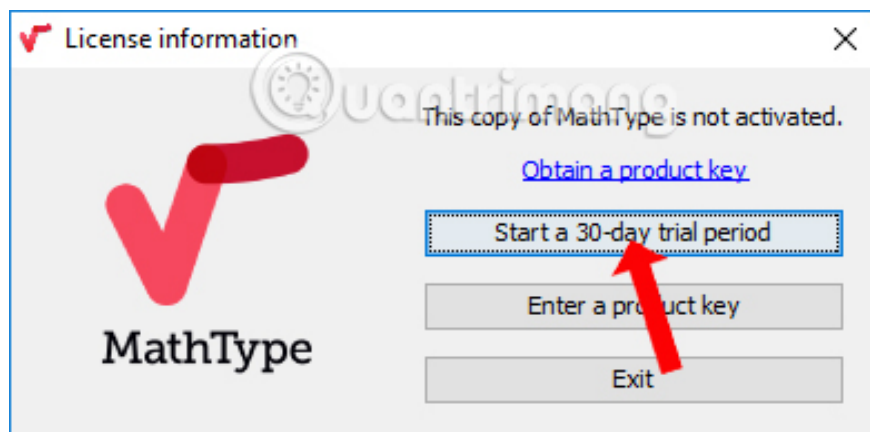


When you see the message as shown below, the installation process is successful, press **Exit Setup** to exit.

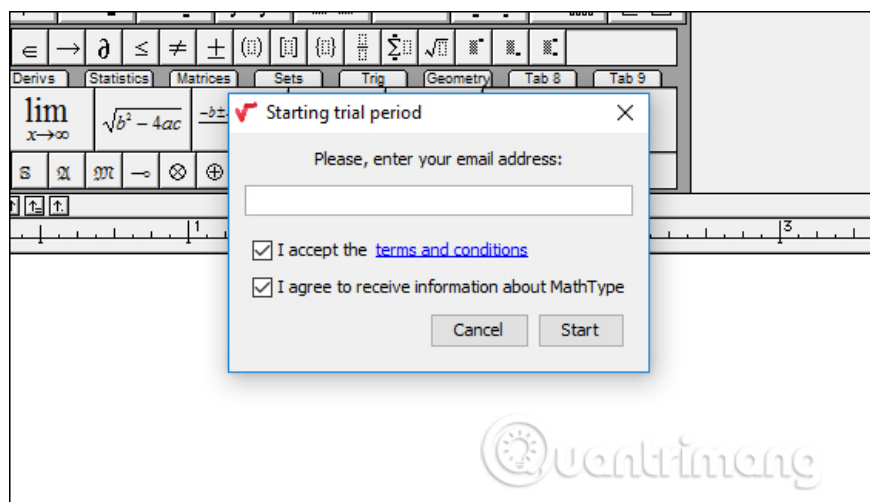


Step 4:

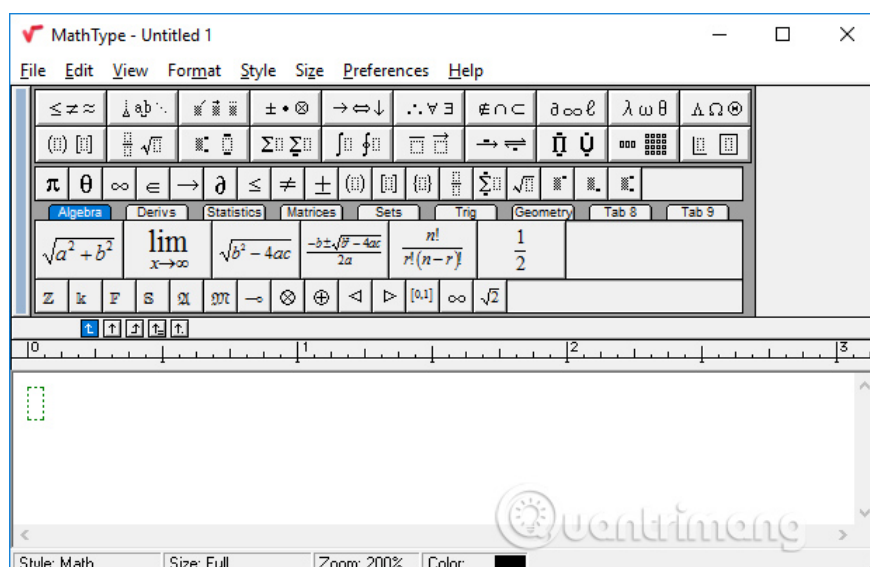
Thus users have completed the installation of software on the computer. Click the MathType icon to start. Here we use the trial version, so click **Start a 30-day trial period** . If you have a key, press Enter a product key.



Next the software will ask the user to **enter the email address** to complete the trial, press the Start button to start.



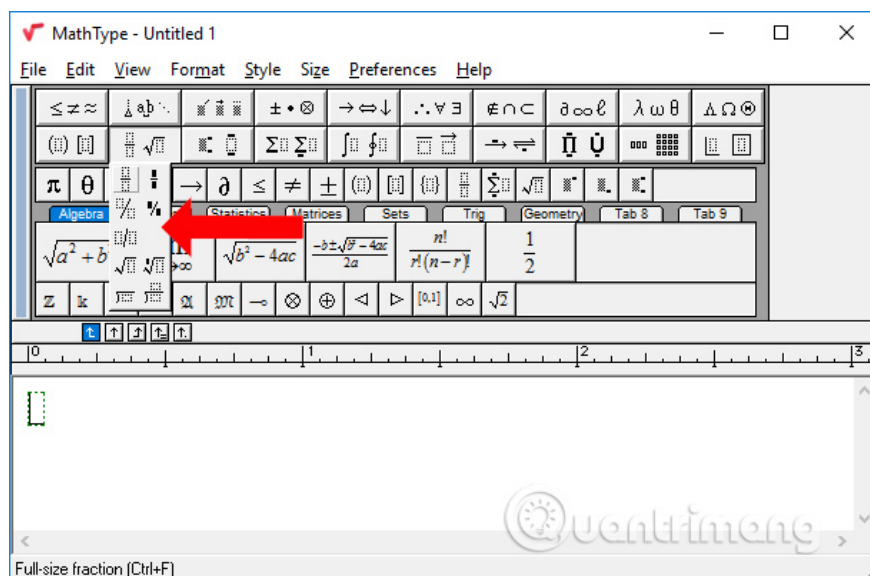
This is the main interface of MathType.



Step 5:

Now you just need to type the math formulas you want to use. For example, to type a fractional formula click on the fraction symbol. Select the type of fraction you want to use in the formula. Then you just need to enter the content for the series of calculations.

Note below that there will be a shortcut for the symbol for you to use quick typing on MathType.



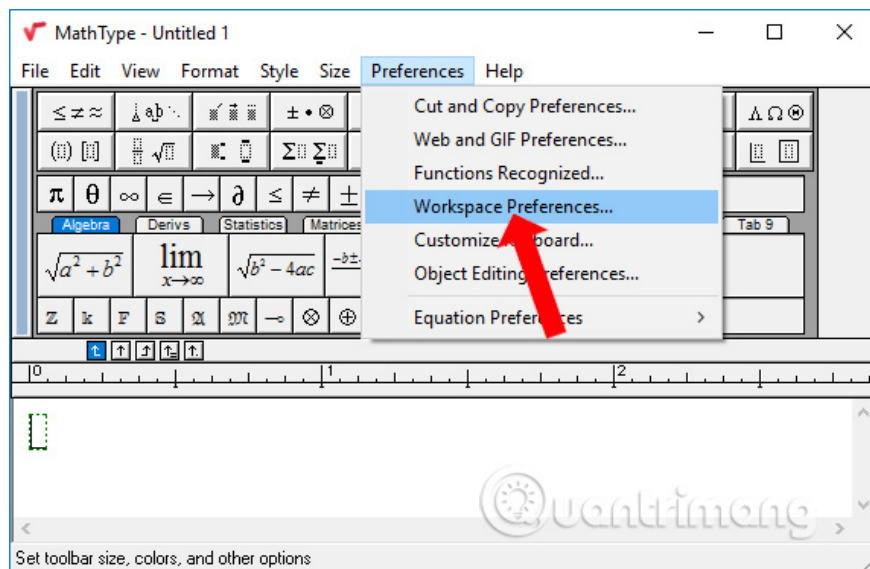
You can quickly refer to the keyboard shortcuts for math in the picture below.

Mở cửa sổ MathType	Ctrl+Alt+Q	[Ctrl+I, [
Đóng cửa sổ MathType	Alt+F4	[]	Ctrl+[
Số mũ	Ctrl+H	a	Ctrl+6, Left
Chỉ số dưới	Ctrl+L		Ctrl+I, Shift + \
Số mũ và chỉ số dưới	Ctrl+J	Dấu tích phân xđ	Ctrl + Sift + I, S
Phân số	Ctrl+F	Dấu TP không xđịnh	Ctrl + Sift + I, !
Căn bậc 2	Ctrl+R	Ma trận 2x2	Ctrl+M, 2
Căn bậc n	Ctrl+I, n	↑	Ctrl+K, +
≥	Ctrl+K, >	≡	Ctrl+K, =
"	Ctrl+K, <	∃	Ctrl+Shift+K,E
→	Ctrl+K, Right	∀	Ctrl+Shift+K,A
⇒	Ctrl+K, Shift+Right	⊂	Ctrl+K,C
⇔	Ctrl+K, Alt+Shift+Right	⊄	Ctrl+K, Shift+C
α	Ctrl+G,A	∈	Ctrl+K, E
β	Ctrl+G,B	∉	Ctrl+K, Shift+E
°	Ctrl+K, I	∪	Ctrl+K,U
≠	Ctrl+G,P	⊥	Ctrl+Shift+K,P
∅	Ctrl+G, Shift+D	R	Ctrl-D, Shift-R
{	Ctrl+I, }	¢	Ctrl-D, Shift-Z
{ }	Ctrl + shift + {	±	Ctrl+Shift+K,=

Type TEX on MathType

Step 1:

Click on **Preferences** in the **Preferences** screen and select **Workspace Preferences** .



Step 2:

Switch to the new interface and click on the **Allow TeX Language** entry from **keyboard** section and click OK.

Workspace Preferences



Toolbar size:

Small Medium Large

OK

Cancel

Insertion point thickness:

Small Medium Large

Help

Empty slot thickness:

Small Medium Large

Ruler units: Inches (in) ▾

User interface language:

English (United States) -- English ▾

Colors:

Selection:



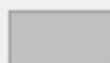
Change...

Background:



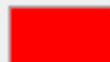
Change...

Spaces:



Change...

Alignment markers
and tabs:



Change...

Empty slots:



Change...

Custom speech text:



Change...

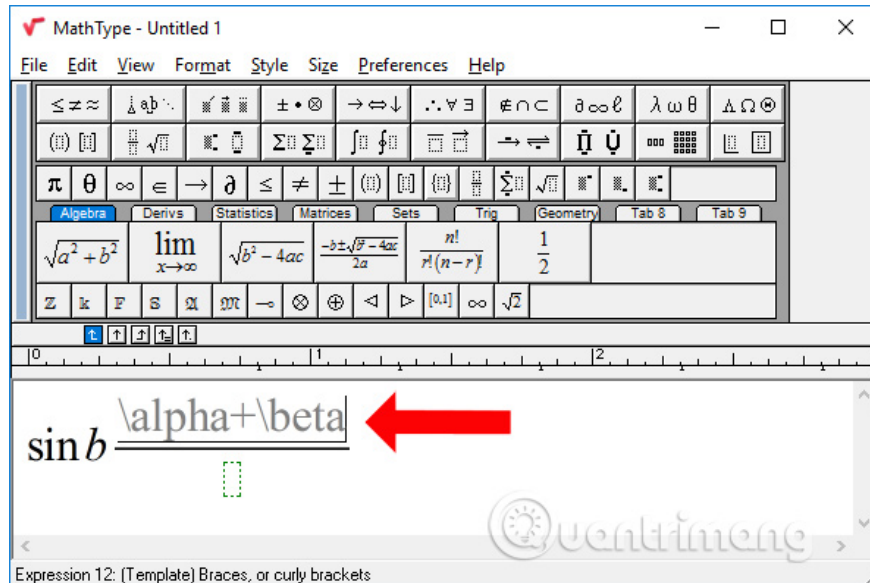
Show character and template counts in the status bar

Allow TeX language entry from the keyboard

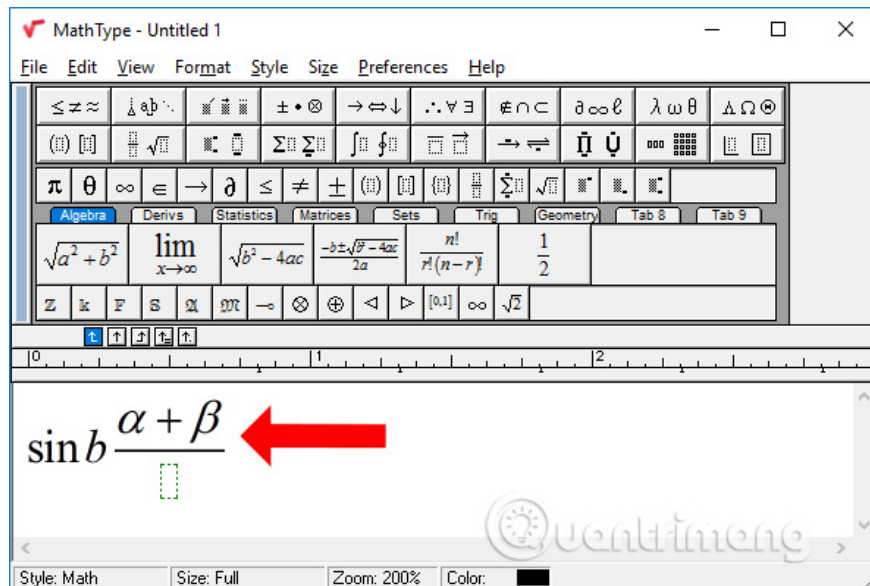
Show all instructional messages again

Step 3:

Back to the formula input interface, just type TEX into the content to see the tool automatically switch to the formula.



When pressing Enter the formula will be moved as shown below. For those who show up on PowerPoint, this approach will be very supportive. After typing is complete, the user only needs to copy and paste into Word or other editing tools.



MathType's user interface is simple and easy to edit calculations and math formulas. However, users should note that if the text file typed in MathType will be relatively large, the symbols are in image format.

See more:

1. How to adjust the low height of the upper and lower index in Word

2. How to set up shortcuts on Microsoft Word 2016 yourself
3. Complete guide to Excel 2016 (Part 13): Introduction to formulas

I wish you all success!

You finished reading the article "**How to use MathType to write math formulas**" edited by the [TipsMake](#) team. We hope this article has provided you with many useful tech tips and tricks. You can search for similar articles on tips and guides. Thank you for reading and for following us regularly.
