

How to use Luminar AI with Photoshop to create more perfect portraits

Luminar AI is a set of editing tools designed to help you simply and quickly create creative and aesthetically pleasing portraits.

The good thing here is that you do not need to have much knowledge of photo editing to use the software, because there is help from AI.

In this article, we will learn together how to edit a complete portrait photo using Luminar AI as a Photoshop plugin. But don't worry if you don't have Photoshop. Luminar AI can work as a standalone program without any other photo editing software.

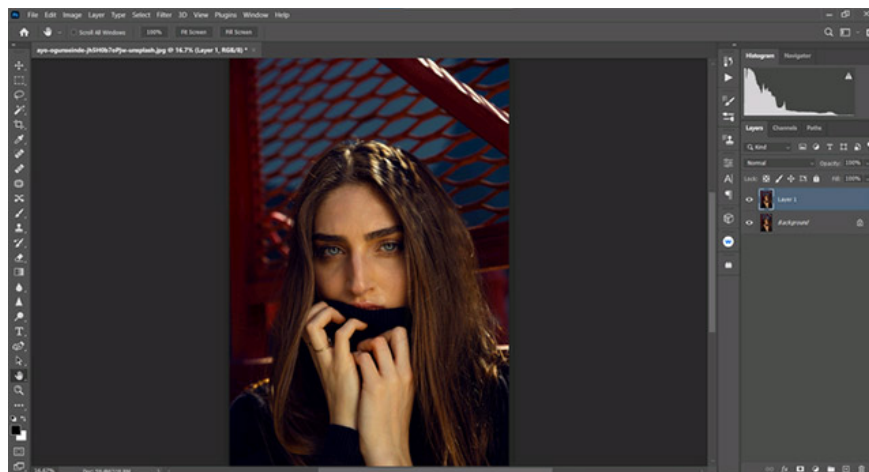
Download Luminar AI [here](#).

Complete portrait photos with Luminar AI

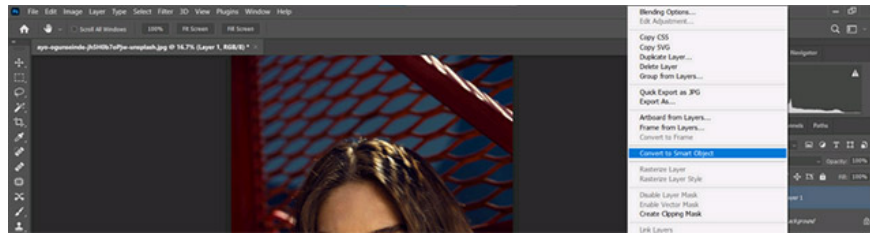
There have been many times when you want to review and edit old photos for a more modern 'taste', or do something more creative with the ones you already have. Luminar AI is a great option if you're looking for a new style of style for photos that you feel are still 'missing something'.

In the example below, we will use an additional Template in Luminar AI called Glow to make the initial tweaks. Then go to the Edit menus and make more big (but simpler) adjustments. Let's start:

Step 1: In Photoshop, create a similar layer again by pressing the shortcut Photoshop press **Ctrl + J** . If you are not using Photoshop, skip the first three steps and simply import the image into Luminar AI, then leap to step 4 below.

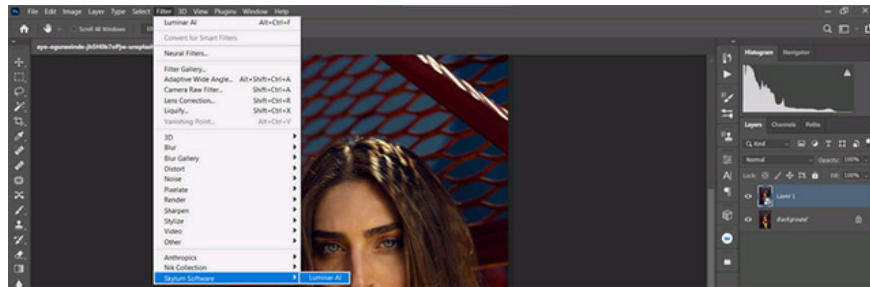


Step 2: Convert the newly created layer into a **Smart Object** by right-clicking and choosing **Convert to Smart Object**.

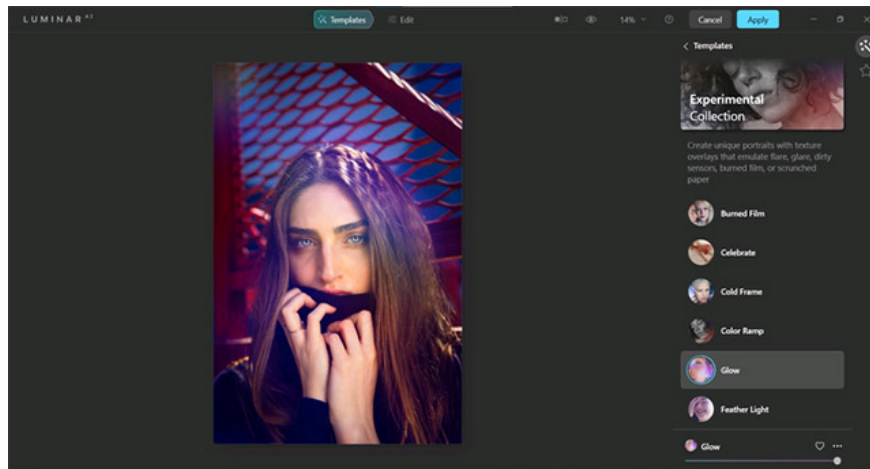


Convert the layer to Smart Objects

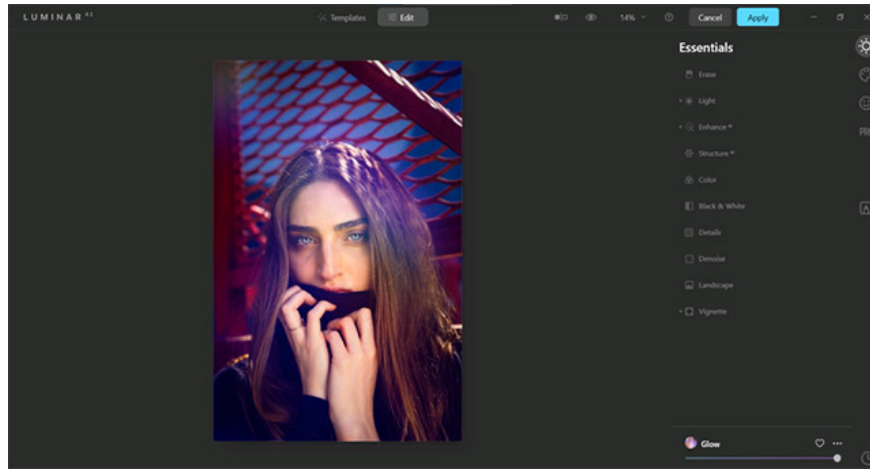
Step 3: Go to **Filter > Skylum Software > Luminar AI**.



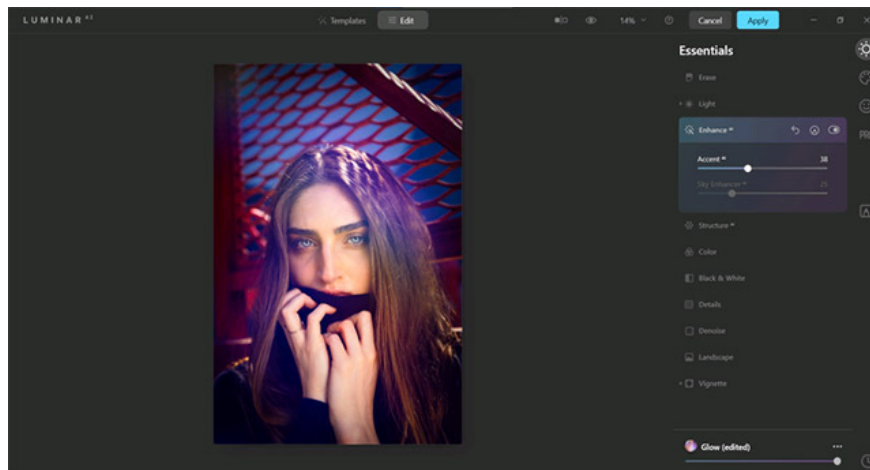
Step 4: On the **Template** menu , click on **Experimental Collection** . Then in the menu options displayed on the screen click on **Glow** .



Step 5: Click **Edit** (next to **Templates**) at the top. Make sure that the **Essentials** item is highlighted, indicated by a sun icon.

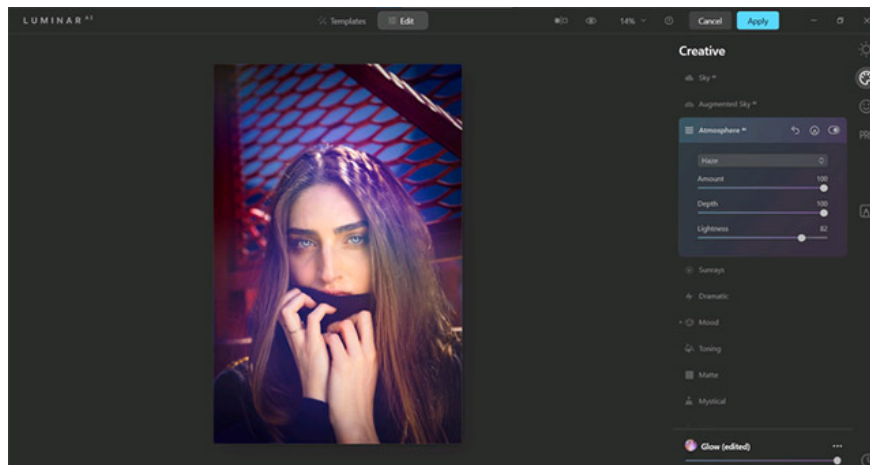


Step 6: Make these adjustment values ??(sliders) for each submenu item: **Enhance AI> Accent AI: 38.**

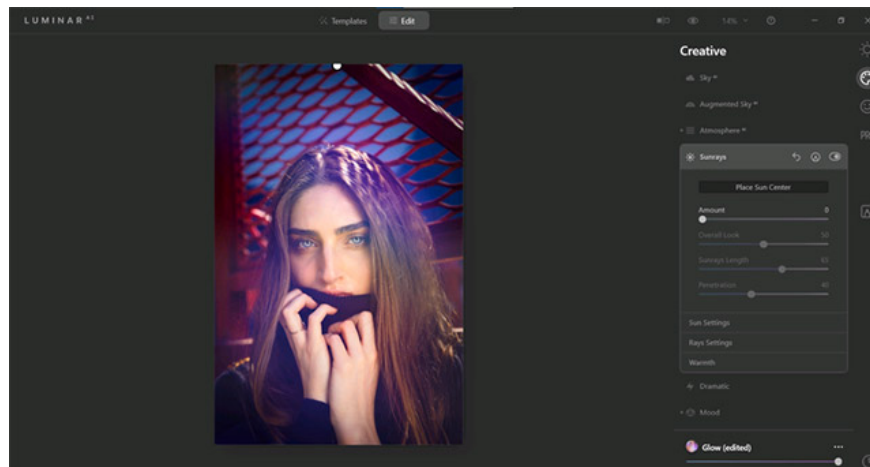


Step 7: Choose **Vignette> Amount: -70> Size: 35> Advanced Settings> Roundness: -29> Feather: 33> Inner Light: 7.**

Step 8: Click **Creative** from the right menu bar, as indicated by the palette icon. After selecting **Atmosphere AI**, click **Haze** from the drop-down menu. From here, choose **Amount: 100> Depth: 100> Lightness: 82.**



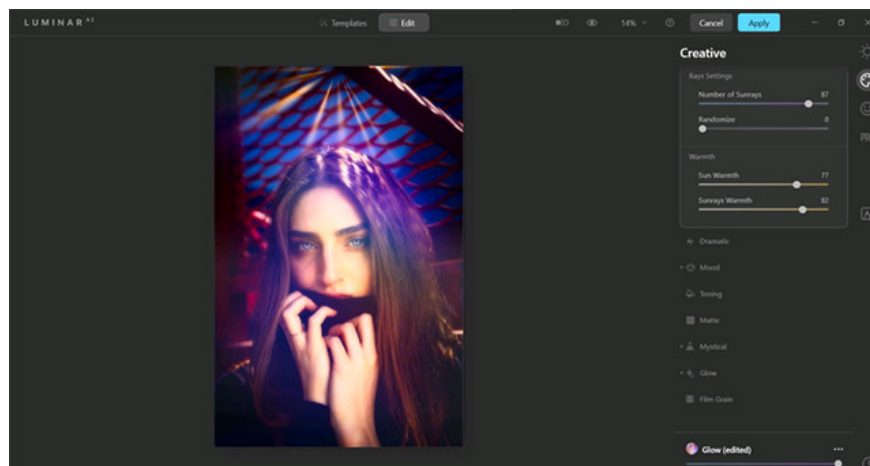
Step 9: Select **Sunrays** . Then, click **Place Sun Center** . Using YOUR MOUSE, move the white dot above the subject's head, so that half of the object can be seen at the top of the screen.



Step 10: Continue making adjustments in **Creative** and enter the following values: **Amount: 72**> **Overall Look: 71**> **Sunrays Length: 50**> **Penetration: 40**.

Step 11: In **Sun Settings** , choose **Sun Radius: 40**> **Sun Glow Radius: 70**> **Sun Glow Amount: 60**.

Step 12: In **Rays Settings** , choose **Number of Rays: 87**> **Warmth**> **Sun Warmth: 77**> **Sunrays Warmth: 82**.



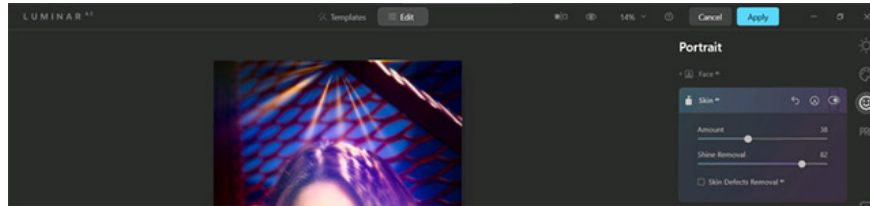
Step 13: Click on **Mystical** , then choose **Amount: 43**> **Shadows: 34**> **Smoothness: 31**.

Step 14: In **Glow** , choose **Soft Focus**> **Glow Amount: 33** . Under **Advanced Settings** , choose **Contrast: 15**.

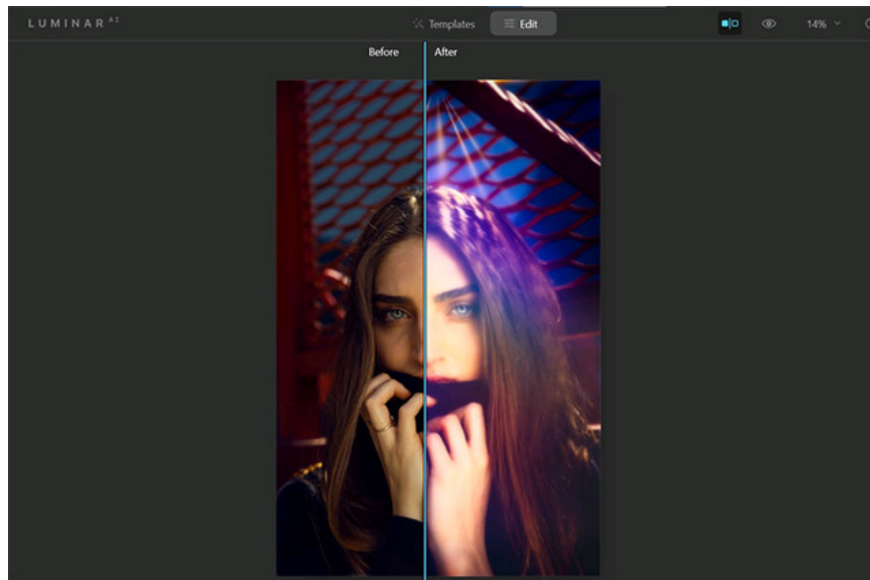
Step 15: Select **Portrait** , indicated by a smiley. Enter the following slider adjustment values ??for each submenu item. In **Face AI** , select **Face Light: 16**.

Step 16: For **Eyes** , choose **Iris Visibility: 80**> **Iris Flare: 74**> **Enlarge Eyes: 17**> **Eye Whitening: 10**> **Eye Enhancer: 20**> **Dark Circles Removal: 29**> **Improve Eyebrows: 20**.

Step 17: Finally, click on **Skin AI** , then choose **Amount: 38**> **Shine Removal: 82**.



Step 18: Then, click **Apply** to return to Photoshop. If you don't have Photoshop, there are options to export images from the standalone version of Luminar AI.



Do not forget that you can always undo an action by pressing **Ctrl + Z** . Whenever you work with Luminar AI in Photoshop (or any other photo editing program that uses layers), make sure to create a duplicate layer or a Stamp Visible layer before running Luminar AI as a plugin. This will allow you to go back and make edits later if needed.

You finished reading the article "**How to use Luminar AI with Photoshop to create more perfect portraits**" edited by the [TipsMake](#) team. We hope this article has provided you with many useful tech tips and tricks. You can search for similar articles on tips and guides. Thank you for reading and for following us regularly.