

How to use live wallpapers on Windows 11

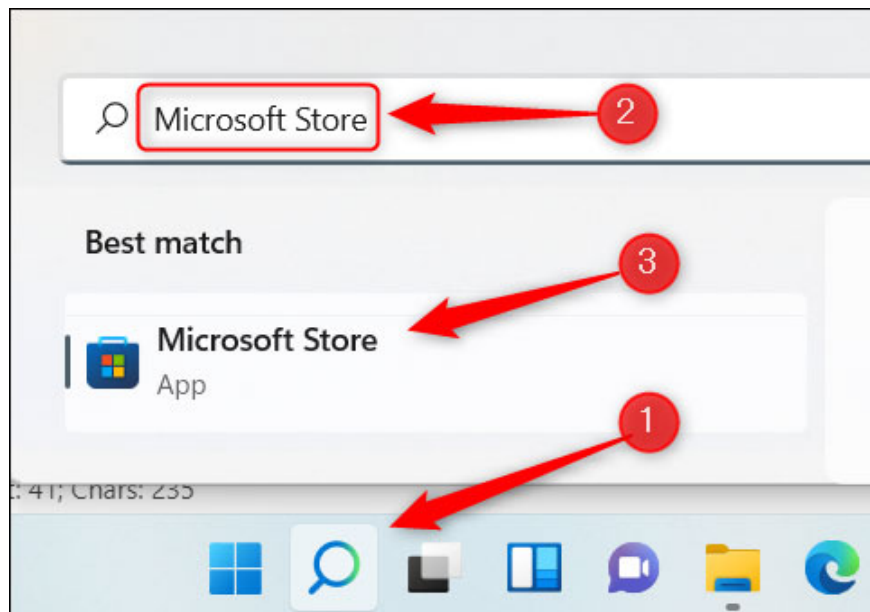
Using a live wallpaper is a simple but useful idea that you should consider using if you want to make the desktop interface on your PC more vivid and less boring.

However, it is quite unfortunate that Microsoft has not yet supported the feature of installing live wallpapers on Windows 11. Instead, you will need to use the help of third-party applications. Find out below.

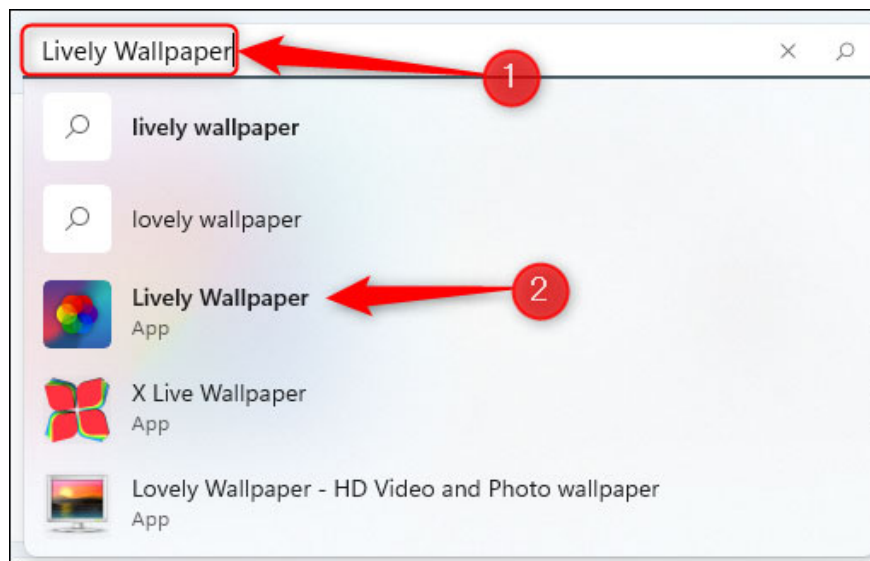
Download the Lively Wallpaper app from the Microsoft Store

As mentioned, you will need the support of third-party applications if you want to install live wallpapers on Windows 11. There are many tools that can help you do that, but we recommend you to do so. choose a software that is popular, used by many people and has positive reviews. This will avoid risks during use such as software conflicts, vulnerabilities, or even virus infection into the system.

The application recommended in this article is Lively Wallpaper, a free and open source application that supports the most popular and highly rated Windows wallpaper customization available today. Moreover, you can safely download Lively Wallpaper directly from a 'reputable' source, the Microsoft Store. First, click the Windows Search icon on the taskbar, enter the keyword 'Microsoft Store' in the search box, then click the Microsoft Store icon from the search results.



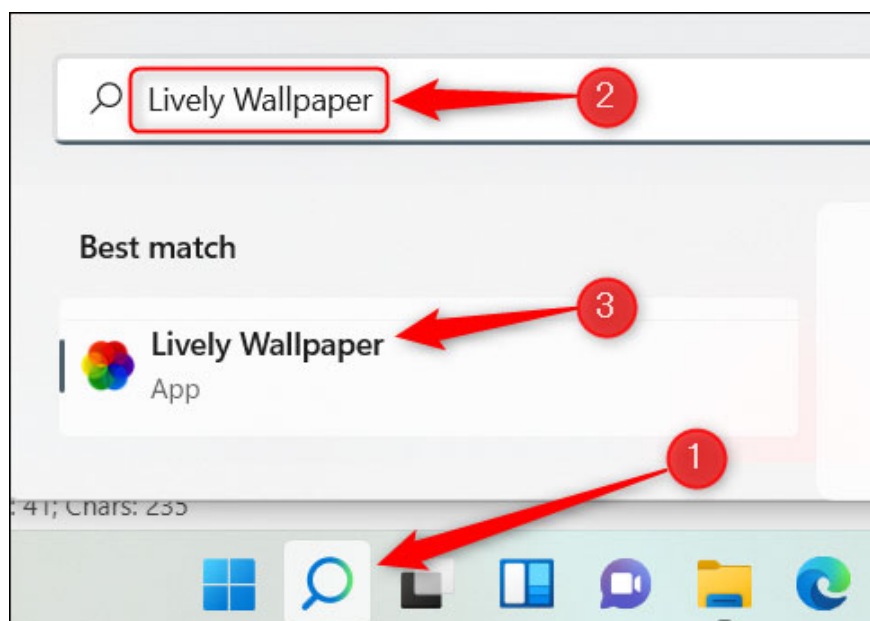
In the Microsoft Store, enter the keyword 'Lively Wallpaper' in the search bar, then select the corresponding app from the search results.



Next, you will see some information about the application. Click the 'Get' button on the right.

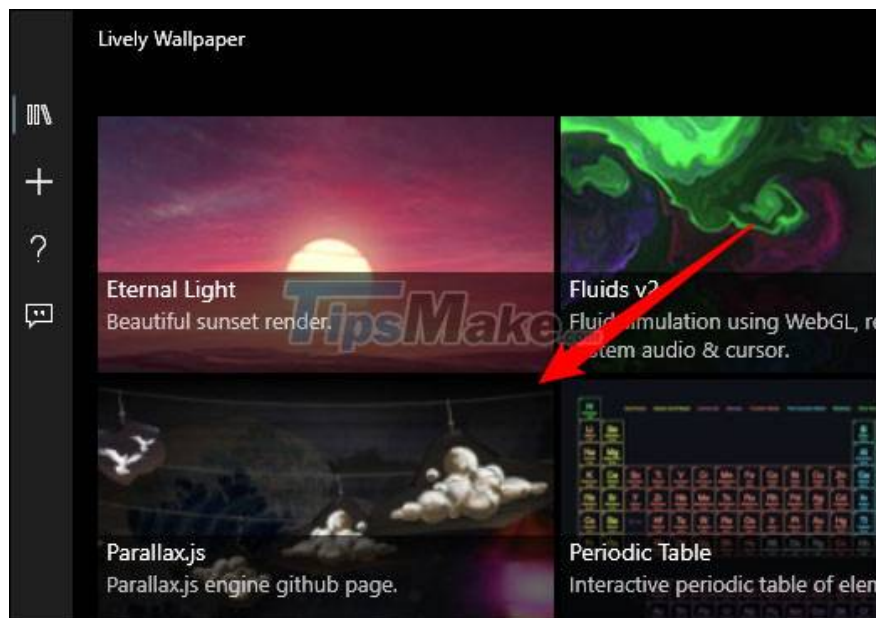


Lively Wallpaper will be downloaded immediately. Once installed on your system, you can find and launch the application using Windows Search.



Choose a live wallpaper from the Lively Wallpaper library

By default, there will be an extremely rich library of live wallpapers for you to choose from. In this example, we will choose Parallax.js.

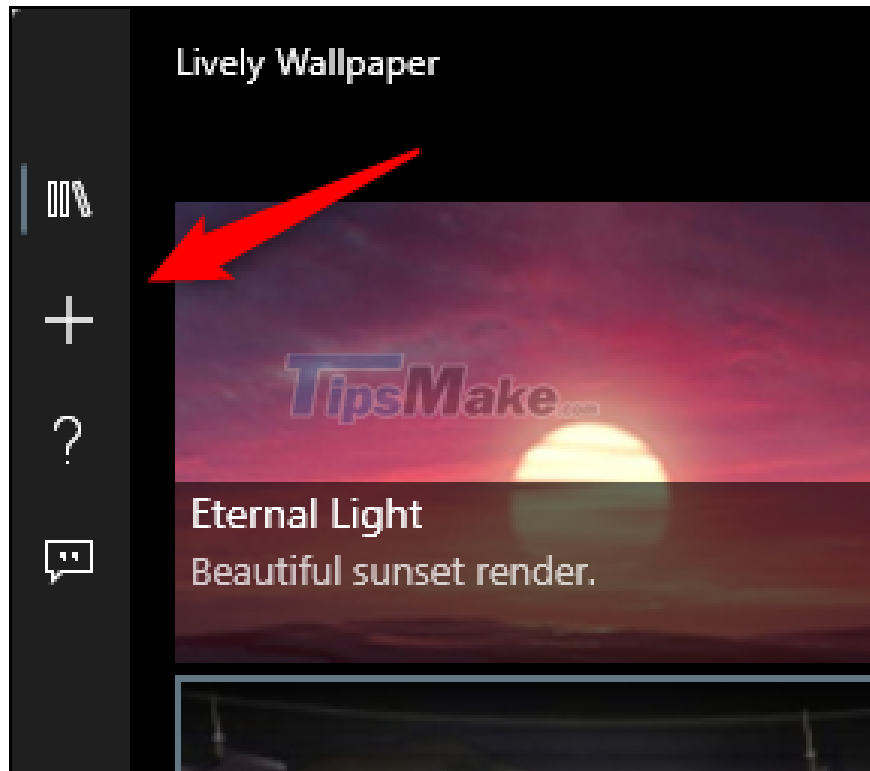


The live wallpaper you choose will be immediately applied on the system.

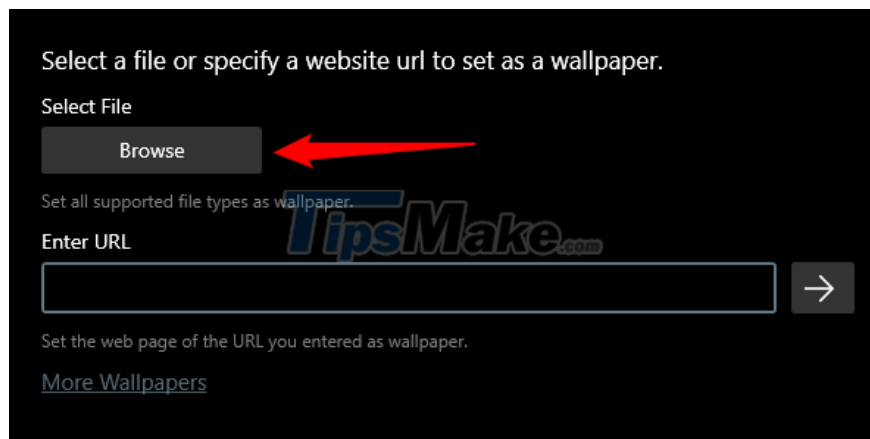
Set Custom Video, YouTube Video or GIF as Wallpaper

If you don't find a wallpaper you like from Lively Wallpaper's library, you can choose your own wallpaper using a video or GIF on your PC, or even embed a YouTube video.

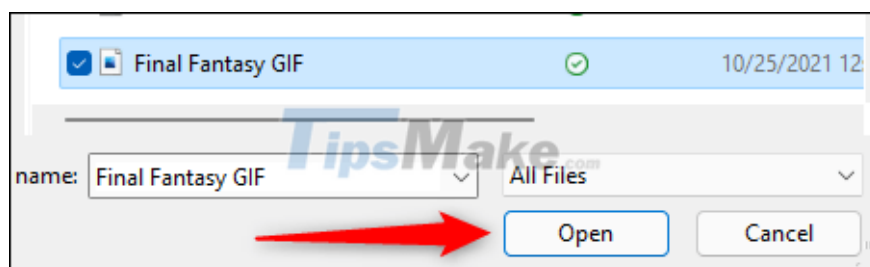
To get started, open the app, then click the plus icon (+) in the left pane.



On the next screen, if you want to select a video or GIF from your PC, click 'Browse' in the Select File section.



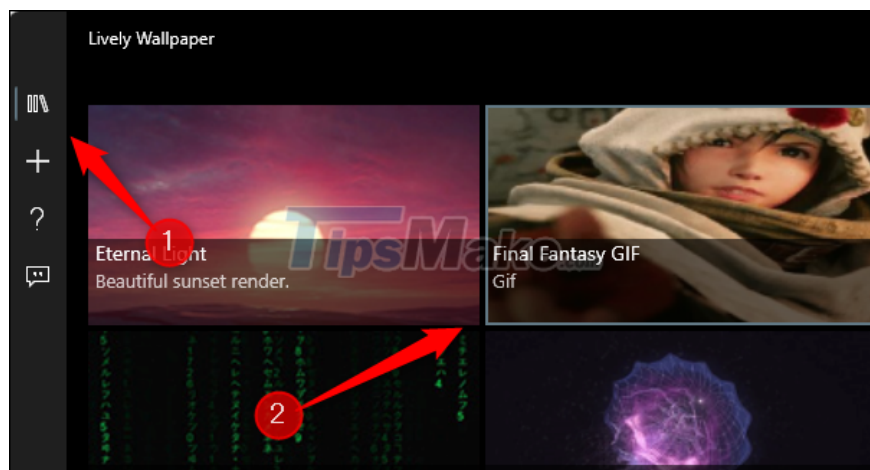
File Explorer will open. Find the video or GIF you want to use, select it, then click 'Open'.



In case you want to use a YouTube video, enter its URL in the 'Enter URL' text box, and then click the arrow button on the right.



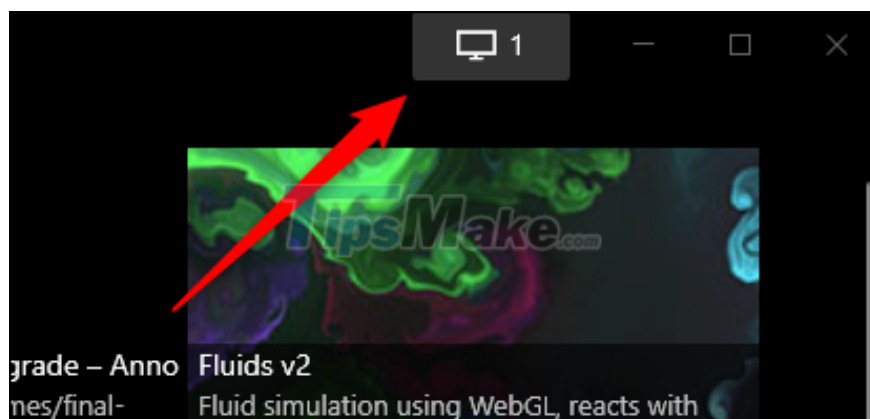
Whether you select a video, a local GIF, or a YouTube video, it will appear in the app's library. Click the library button (three books icon) in the left pane, then select the video or GIF you just uploaded.



Live wallpaper has been applied.

Set live wallpaper on multiple screens

If you're using a PC with a multi-monitor setup, you may notice that normal wallpaper changes will only be applied to one monitor. To set a live wallpaper on other screens, open the Lively Wallpaper app and click the Control Panel icon (monitor shape) in the upper-right corner of the window.

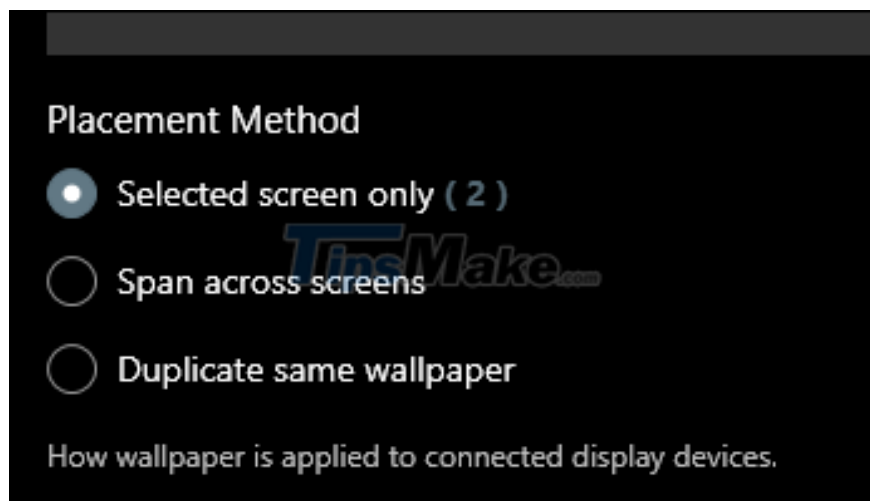


The default placement method is 'Selected Screen Only', which means that the wallpaper you choose will only be displayed on a specific screen. To set the same wallpaper on other screens, click on that screen in the Choose Display section.



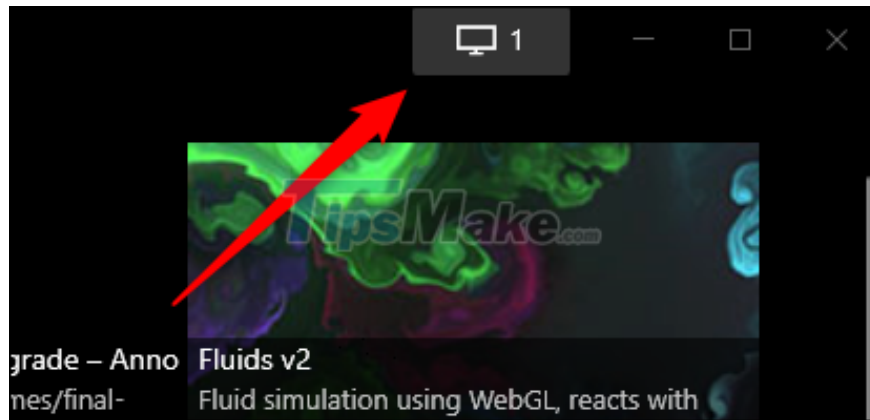
Now, go back to the app's gallery and select the wallpaper you want to set.

You can also change the position of the selected wallpaper. That is, it can be set to make the selected wallpaper stretch across all screens.



Close Lively Wallpaper

If you decide to stop using the live wallpaper you've set up with Lively Wallpaper, open the app and then click the Control Panel icon in the upper-right corner of the window.



Next, click on 'Close Wallpapers' in the bottom right corner.



The wallpaper will be deleted.

You finished reading the article "**How to use live wallpapers on Windows 11**" edited by the [TipsMake](#) team. We hope this article has provided you with many useful tech tips and tricks. You can search for similar articles on tips and guides. Thank you for reading and for following us regularly.