

How to use KDE Connect with MATE on Ubuntu and Debian

KDE Connect is an extremely convenient way to link Android phones and Linux PCs. With KDE Connect, you can view notifications and reply to text messages on a desktop or laptop computer.

KDE Connect is an extremely convenient way to link Android phones and Linux PCs. With KDE Connect, you can view notifications and reply to text messages on a desktop or laptop computer. You can also share files and links between two devices and control your PC from your phone.

Although KDE Connect is very popular, it still doesn't integrate well with GTK desktops like MATE. Thankfully, there is a way to use KDE Connect with MATE on Ubuntu and Debian.

Instructions for using KDE Connect with MATE on Ubuntu and Debian

1. Install KDE Connect
2. Install Flatpak
3. Activate Flathub
4. Install indicator-kdeconnect
5. Get the app
6. Phone connection

Install KDE Connect

Start by installing KDE Connect. Sure, KDE Connect has a lot of dependencies, but most of them are really just Qt libraries. You won't get many KDE or Plasma applications or even the desktop environment itself.

KDE Connect is available in both the Debian and Ubuntu repositories, so install it with Apt.

```
sudo apt install kdeconnect
```

Install Flatpak

There are several different ways to install indicator-kdeconnect, but Flatpak is the easiest way. If you do not already have Flatpak on your system, install it.

```
sudo apt install flatpak
```

Activate Flathub

Now, activate the Flathub repository on the system. This is a main repository and it contains all the content that Flatpak provides, so you won't have to regret installing it. Chances are you'll use Flatpak again in the future.

```
sudo flatpak remote-add --if-not-exists flathub https://flathub.org/repo/flathub
```

Install indicator-kdeconnect

```
File Edit View Search Terminal Help
tpc          network      pulseaudio    x11
devices     file access [1] dbus access [2] bus ownership [3]

[1] host, xdg-run/dconf, ~/.conflg/dconf:ro
[2] ca.desrt.dconf, org.freedesktop.DBus.Proprieties, org.freedesktop.IBus,
    org.freedesktop.Notifications, org.kde.StatusNotifierWatcher,
    org.kde.kdeconnect, org.kde.kdeconnectd
[3] com.github.bajoja.indicator-kdeconnect.settings

Load
 1. org.gnome.Platform x86_64 3.26 flathub < 48
1.0 MB
 2. org.freedesktop.Platform.ffmpeg x86_64 1.6 flathub <
2.9 MB
 3. org.gnome.Platform.Locale x86_64 3.26 flathub < 18
7.2 MB (partial)
 4. com.github.bajoja.indicator-kdeconnect x86_64 stable flathub <
1.9 MB
 5. com.github.bajoja.indicator_kdeconnect.Locale x86_64 stable flathub < 5
2.6 kB (partial)

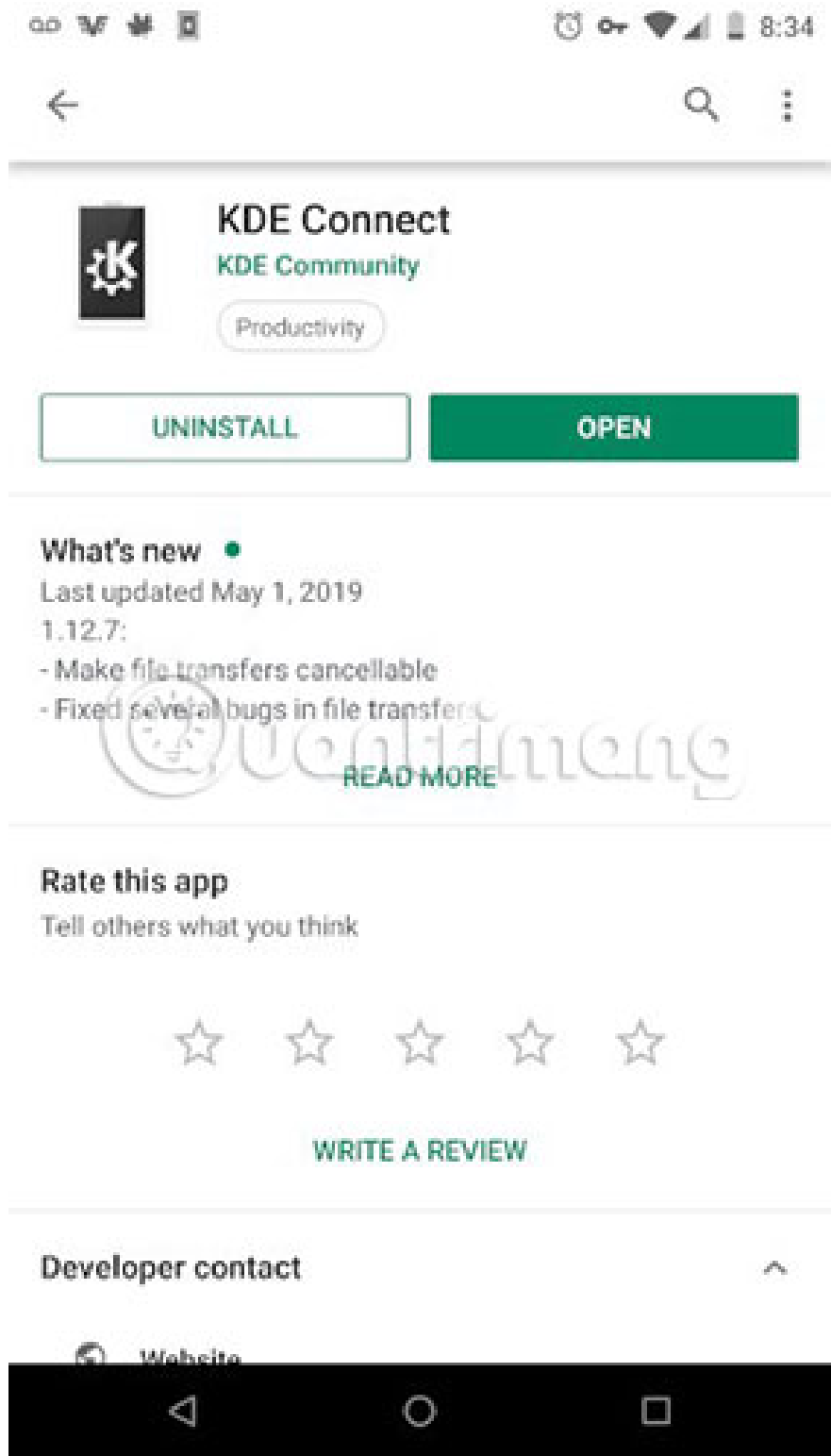
Proceed with these changes to the Default system installation? [Y/n]:
```

Once you have added the repository to the system, you can install the indicator-kdeconnect.

```
sudo flatpak install flathub com.github.bajoja.indicator-kdeconnect
```

During the installation process, you will be asked to install some GNOME dependency via Flatpak. They are very necessary and will not interfere with your system. Please confirm and continue installation.

Get the app



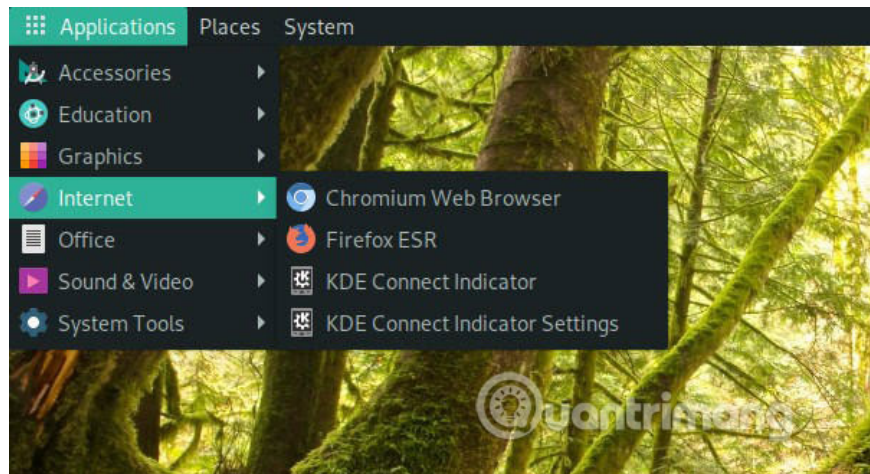
Open Play Store and search for **KDE Connect**, then install it (usually the first result appears).



Open the application. You probably won't see many things there, but your computer will show up when you start KDE Connect.

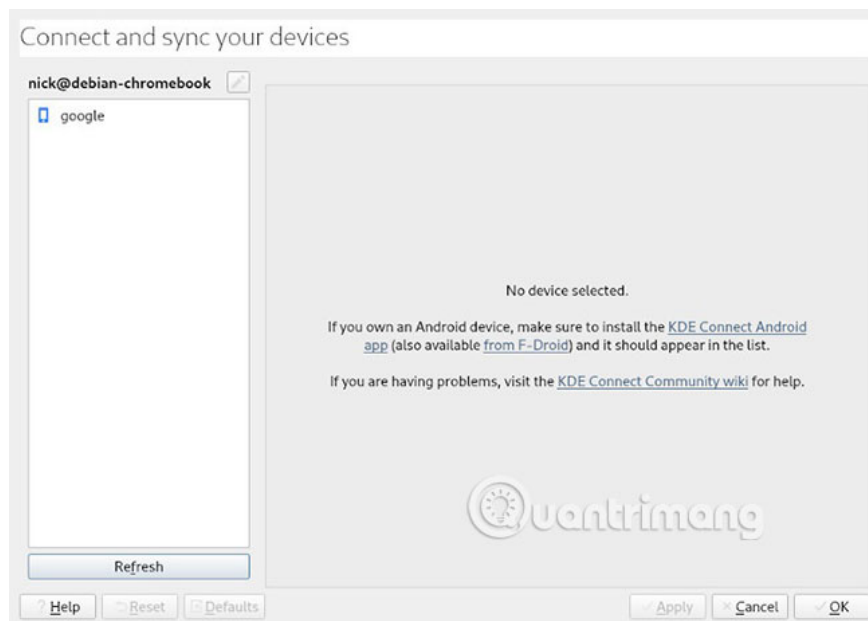
Phone connection

Go back to the computer, log out of the user account and log in again. This is not always necessary, but you may need to do this to view the indicator from Flatpak in the launcher.

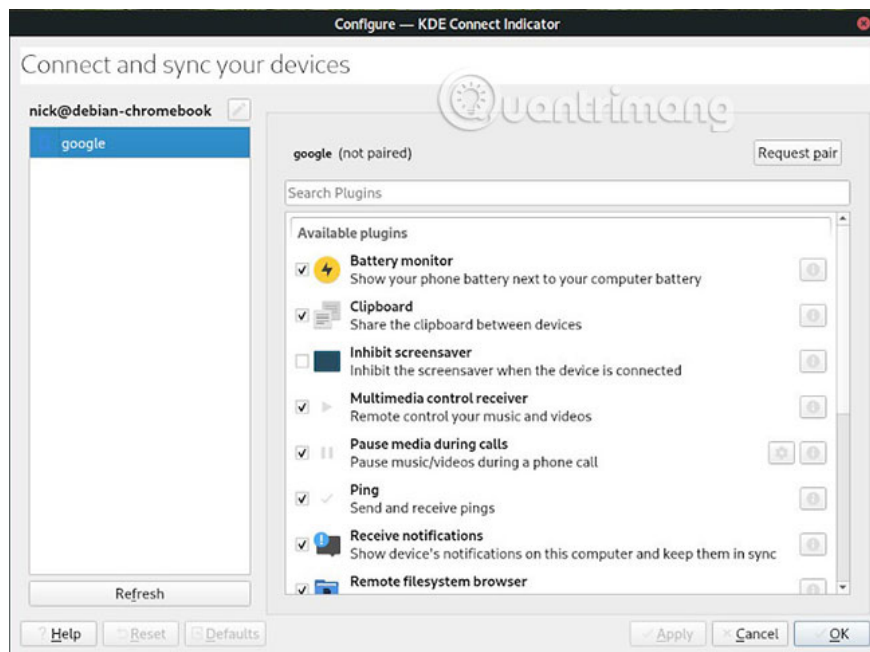


Open the **Applications** menu and view in the **Internet** tab . There you will see two KDE Connect options. Launch the **KDE Connect Indicator** .

The icon will appear in the system tray. Right-click it and select **Configure**.



A new window will open and you will see your device listed there. Click it to see the settings on the right side of the window. Then, at the top right, click the **Request Pair** button .



You will receive a notification asking for pairing on the phone. Please accept the request. The screen will move on both the phone and the computer, letting you know they are paired. You now have full access to KDE Connect features.

Hope you are succesful.

You finished reading the article "**How to use KDE Connect with MATE on Ubuntu and Debian**" edited by the [TipsMake](#) team. We hope this article has provided you with many useful tech tips and tricks. You can search for similar articles on tips and guides. Thank you for reading and for following us regularly.