

How to use ipconfig command to refresh, reset IP address for the computer

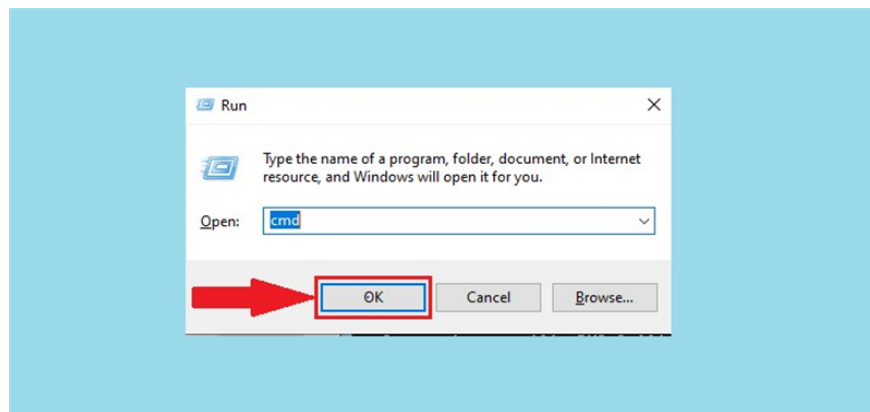
Instructions on how to use the ipconfig command to refresh, reset the IP address of the computer in the Command Prompt, introduce advanced ipconfig commands. Click watch now!

The ipconfig command is a utility that you need to know when using your computer such as helping to view IP address configuration information, re-apply ip from DHCP server, clear DNS cache, . So this article would like to guide how to use the command. ipconfig so that you do not know can refer to.

1. How to find an IP address using the ipconfig command

- Step 1: Open Command Prompt

Use the **Windows + R** key combination > Type " **cmd** "> Select **OK** .



?

- Step 2: Enter the ipconfig command to see the IP address

Complete open Command Prompt> Enter ipconfig command > Press **Enter** .

```
C:\WINDOWS\system32\cmd.exe
Microsoft Windows [Version 10.0.18363.1198]
(c) 2019 Microsoft Corporation. All rights reserved.

C:\Users\HP>ipconfig

Windows IP Configuration

Ethernet adapter Ethernet:

    Connection-specific DNS Suffix  . : 
    IPv6 Address. . . . . : 2402:800:6319:bf6d:dc96:2c75:3998:a552
    Temporary IPv6 Address. . . . . : 2402:800:6319:bf6d:f46e:a254:f1ee:851a
    Link-local IPv6 Address . . . . . : fe80::dc96:2c75:3998:a552%10
    IPv4 Address. . . . . : 192.168.1.26
    Subnet Mask . . . . . : 255.255.255.0
    Default Gateway . . . . . : fe80::1%10
                                192.168.1.1

C:\Users\HP>
```

- Link-local IPv6 Address: IPv6 address on your computer.
- IPv4 Address: IPv4 address on your computer (usually Vietnamese infrastructure uses IPv4).
- Subnet Mask: The current network range of the above address layer.
- Default Gateway: The main address of your network, which provides the network for the entire system.

- Step 3: Reset the IP address

Type **ipconfig / release** > Press **Enter** .

```
C:\WINDOWS\system32\cmd.exe
Microsoft Windows [Version 10.0.18363.1198]
(c) 2019 Microsoft Corporation. All rights reserved.

C:\Users\HP>ipconfig/release

Windows IP Configuration

Ethernet adapter Ethernet:

    Connection-specific DNS Suffix  . : 
    IPv6 Address. . . . . : 2402:800:6319:bf6d:dc96:2c75:3998:a552
    Temporary IPv6 Address. . . . . : 2402:800:6319:bf6d:f46e:a254:f1ee:851a
    Link-local IPv6 Address . . . . . : fe80::dc96:2c75:3998:a552%10
    Default Gateway . . . . . : fe80::1%10
```

- Step 4: Refresh the IP address

Enter the command **ipconfig / renew** to get a new IP address from the DHCP server. The output shows the ipconfig / renew command output which will indicate the new IP address from the DHCP server.

```
C:\WINDOWS\system32\cmd.exe
Microsoft Windows [Version 10.0.18363.1198]
(c) 2019 Microsoft Corporation. All rights reserved.

C:\Users\HP>ipconfig/renew
Windows IP Configuration

Ethernet adapter Ethernet:

    Connection-specific DNS Suffix  . : 
    IPv6 Address. . . . . : 2402:800:6319:bf6d:dc96:2c75:3998:a552
    Temporary IPv6 Address. . . . . : 2402:800:6319:bf6d:f46e:a254:f1ee:851a
    Link-local IPv6 Address . . . . . : fe80::dc96:2c75:3998:a552%10
    IPv4 Address. . . . . : 192.168.1.26
    Subnet Mask . . . . . : 255.255.255.0
    Default Gateway . . . . . : fe80::1%10
                                192.168.1.1

C:\Users\HP>
```

2. Advanced ipconfig commands

- **ipconfig /?** : Displays help messages.

```
C:\WINDOWS\system32\cmd.exe
Microsoft Windows [Version 10.0.18363.1198]
(c) 2019 Microsoft Corporation. All rights reserved.

C:\Users\HP>ipconfig/?
USAGE:
    ipconfig [/allcompartments] [/? | /all |
        /renew [adapter] | /release [adapter] |
        /renew6 [adapter] | /release6 [adapter] |
        /flushdns | /displaydns | /registerdns |
        /showclassid adapter |
        /setclassid adapter [classid] |
        /showclassid6 adapter |
        /setclassid6 adapter [classid] ]

where
    adapter          Connection name
                    (wildcard characters * and ? allowed, see examples)

Options:
    /?              Display this help message
    /all            Display full configuration information.
    /release        Release the IPv4 address for the specified adapter.
    /release6       Release the IPv6 address for the specified adapter.
    /renew          Renew the IPv4 address for the specified adapter.
    /renew6         Renew the IPv6 address for the specified adapter.
    /flushdns       Purges the DNS Resolver cache.
    /registerdns    Refreshes all DHCP leases and re-registers DNS names
    /displaydns     Display the contents of the DNS Resolver Cache.
    /showclassid   Displays all the dhcp class IDs allowed for adapter.
    /setclassid    Modifies the dhcp class id.
    /showclassid6  Displays all the IPV6 DHCP class IDs allowed for adapter.
    /setclassid6   Modifies the IPV6 DHCP class id.
```

- **ipconfig / all** : Shows all configuration information.

Picture 6 of How to use ipconfig command to refresh, reset IP address for the computer

- **ipconfig / allcompartments** : Shows information about all parts of the network.

- **ipconfig / flushdns** : Clear DNS Resolver cache.

- **ipconfig / registerdns** : Refresh all DHCP lease and re-register DNS name.

- **ipconfig / displaydns** : Displays the contents of the DNS Resolver cache.

Picture 7 of How to use ipconfig command to refresh, reset IP address for the computer

- **ipconfig / SHOWCLASSID** : Show all the DHCP class IDs allowed for adapter.

- **ipconfig / SETCLASSID** : Edit DHCP class ID.

Hope this article will help you in using ipconfig command on Command Prompt. Good luck!

You finished reading the article "**How to use ipconfig command to refresh, reset IP address for the computer**" edited by the [TipsMake](#) team. We hope this article has provided you with many useful tech tips and tricks. You can search for similar articles on tips and guides. Thank you for reading and for following us regularly.