

How to use gradient colors for Canva text

Gradient color ranges bring artistic effect to images and text, helping the content stand out in the design.

On Canva you have many gradient color options for text and customize the colors to your liking. We can use gradient colors for each letter to create a stronger effect. Below are instructions for using gradient colors for Canva text.

Instructions for using gradients for Canva documents

Step 1:

First you open a new design in Canva. Switching to the new interface, users click on **Components** on the left edge of the interface.



Step 2:

To display new content, scroll down to **the Frame section and click See all** to expand frame options.



We continue to scroll down to see the letter frames for you to use for your design.

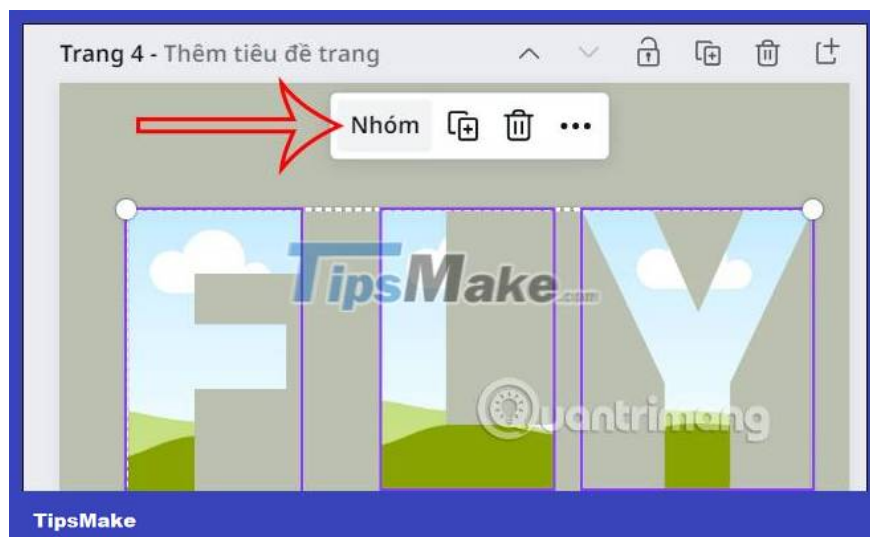


You select the letters and then adjust the size and position in the design accordingly.



Step 3:

After you have written the complete letter, you need to group the letters together. Use your **mouse to cover all the letters** and then **select Group** to combine the letters together.



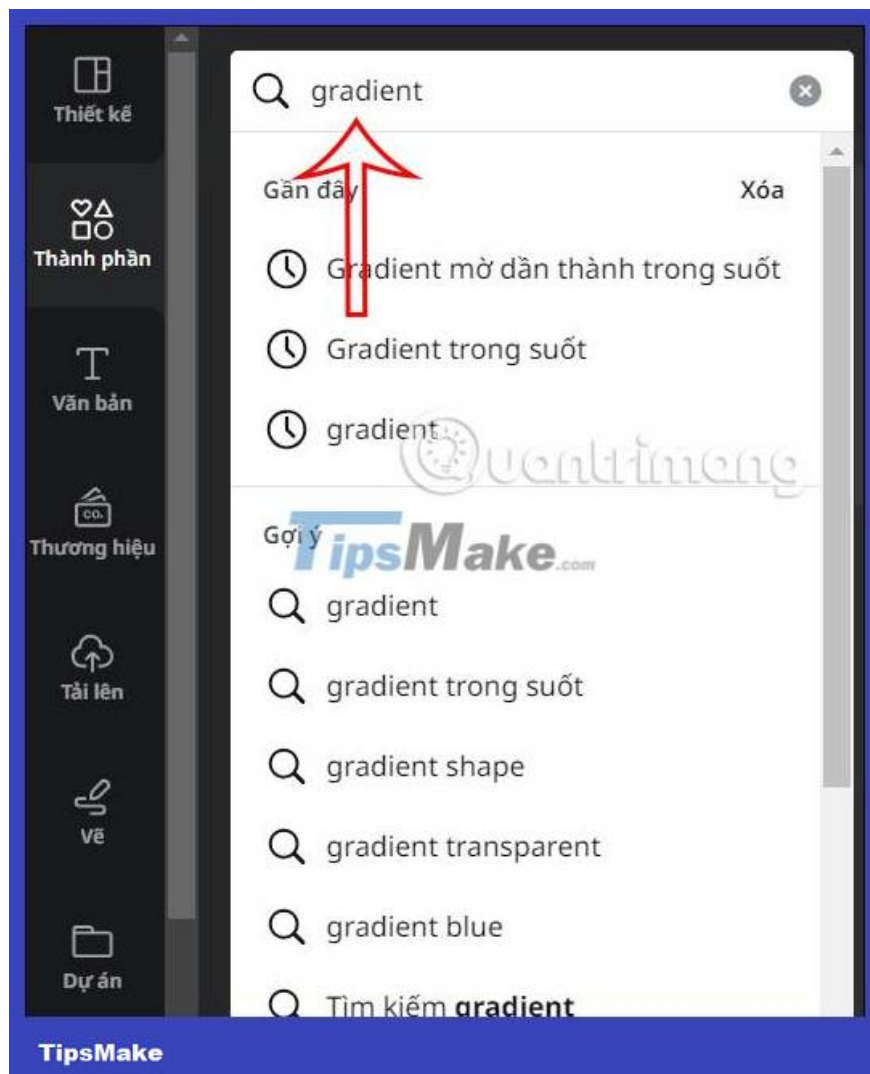
Step 4:

After grouping the letters together, click on **Position** and then **align the position** in the middle to proceed.



Step 5:

Continue in **the Components group** , enter **the keyword gradient** to search for the color range.



Then in **the Photos section**, click **See all** to expand the color range for use.

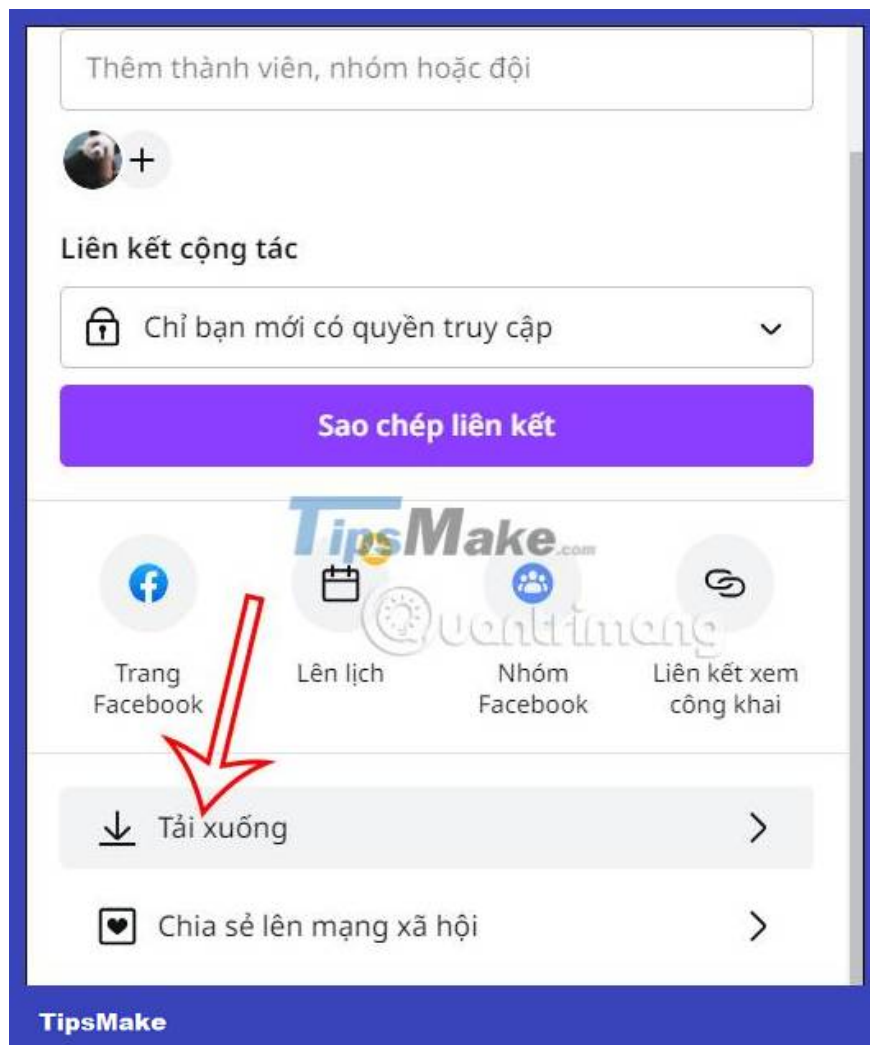


Step 6:

We select the gradient color range we want to use for the text in the design and then drag that color range into the text. We can use many gradient colors for each letter depending on your design purpose.



Finally, we download this design as usual or continue editing.



You finished reading the article "**How to use gradient colors for Canva text**" edited by the [TipsMake](#) team. We hope this article has provided you with many useful tech tips and tricks. You can search for similar articles on tips and guides. Thank you for reading and for following us regularly.