

# How to use Find My Device to locate a lost phone on Android or PC.

If you misplace your phone or don't know its exact location, you can use Find My Device to quickly locate it, enhancing security, remotely locking data, and preventing unauthorized access.

Losing your phone is extremely dangerous because thieves can steal your information. However, the publisher has anticipated this and allows you to use **Google Find My Device** to locate your phone remotely without any difficulty.



**Instructions on using Find My Device to locate your phone remotely.**

## *Conditions for using Find My Device effectively*

For this application to work 100%, users need to meet the following requirements:

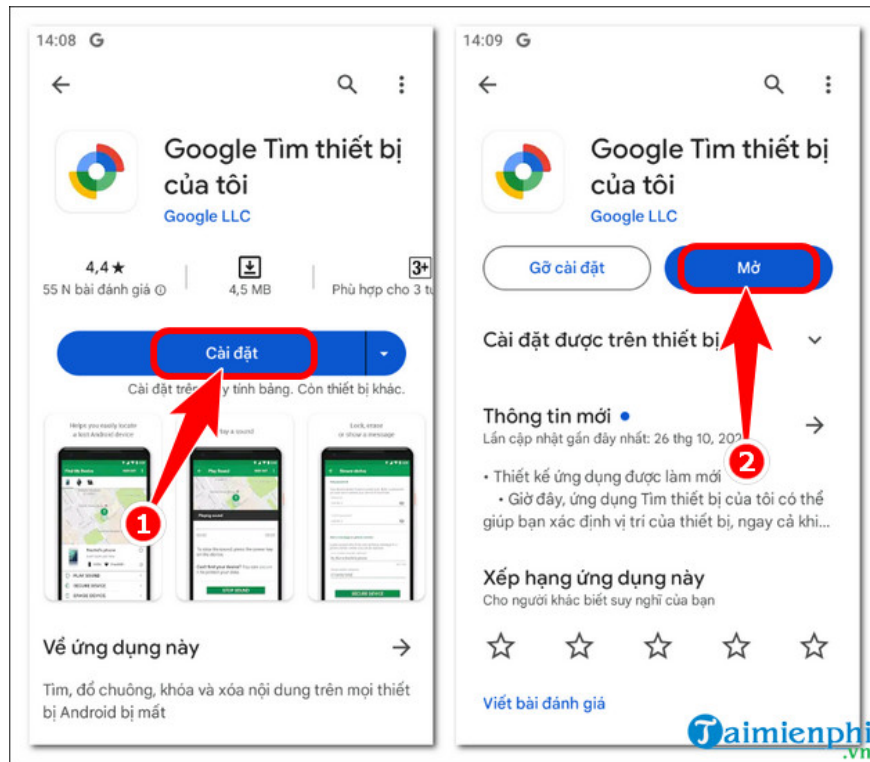
- A phone running Android 5.0 or higher.
- **GPS** must be enabled on Android and connected to a 3G/4G or Wi-Fi internet network.
- The device must be logged into a Google account.

## *How to use Find My Device to locate a lost phone on Android*

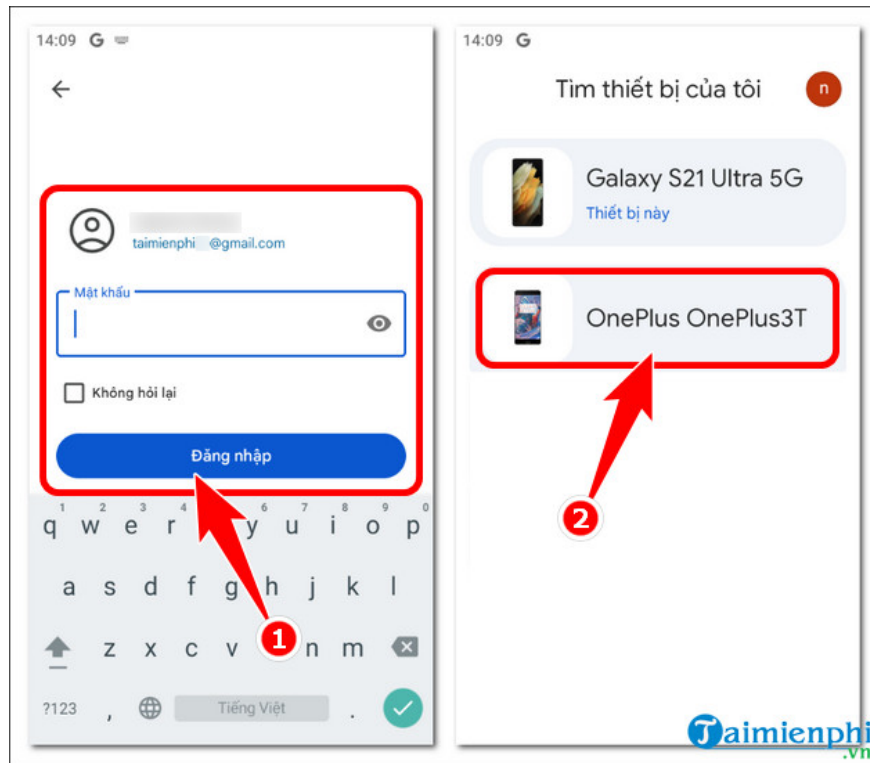
Normally, when a phone is lost, the chances of finding it again are very low. But with the Find My Device app, you still have a better chance of getting it back.

*Step 1:* Access the **Google Find My Device download link for Android** here.

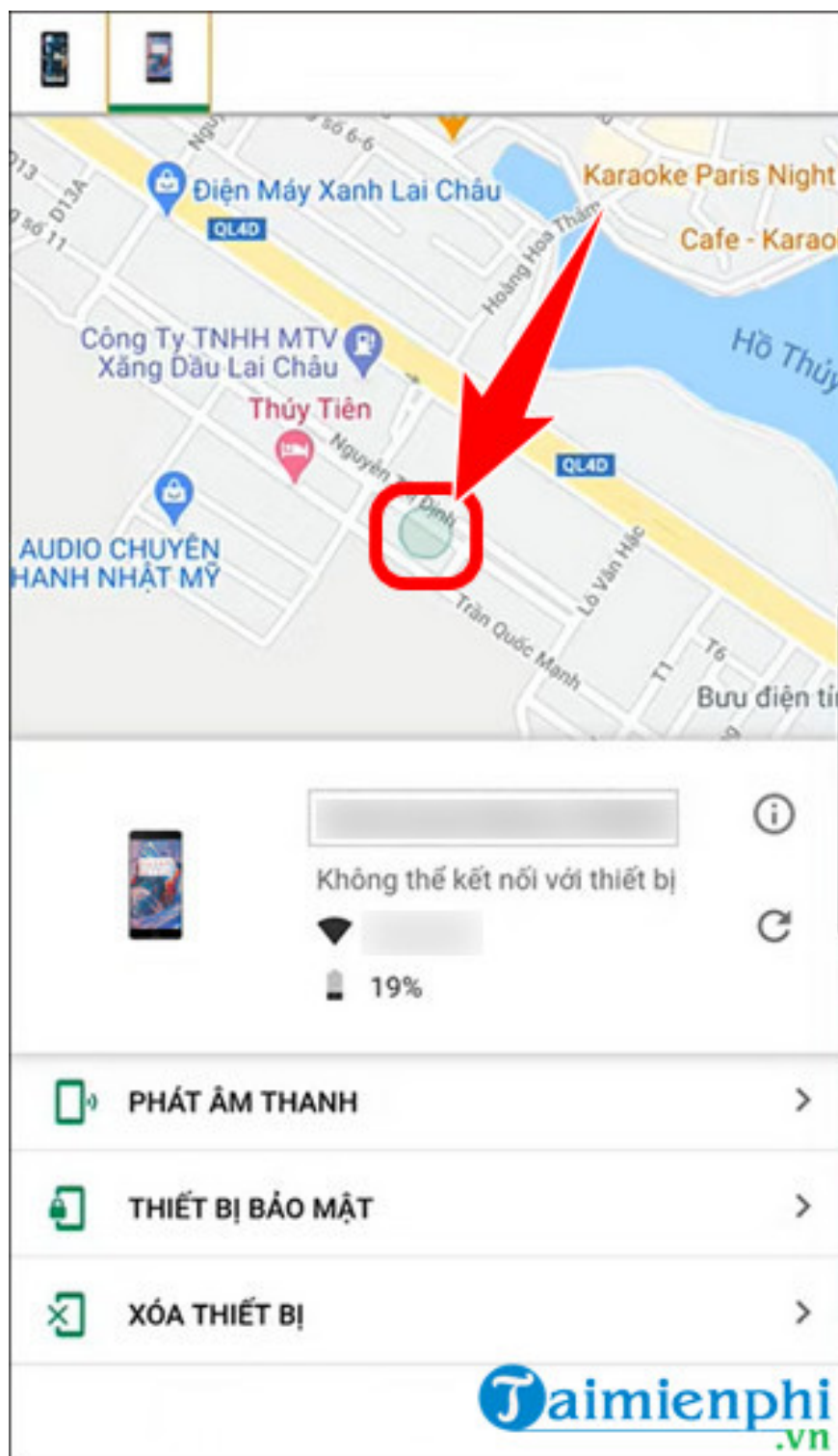
- Click **Install** => press **Open** .



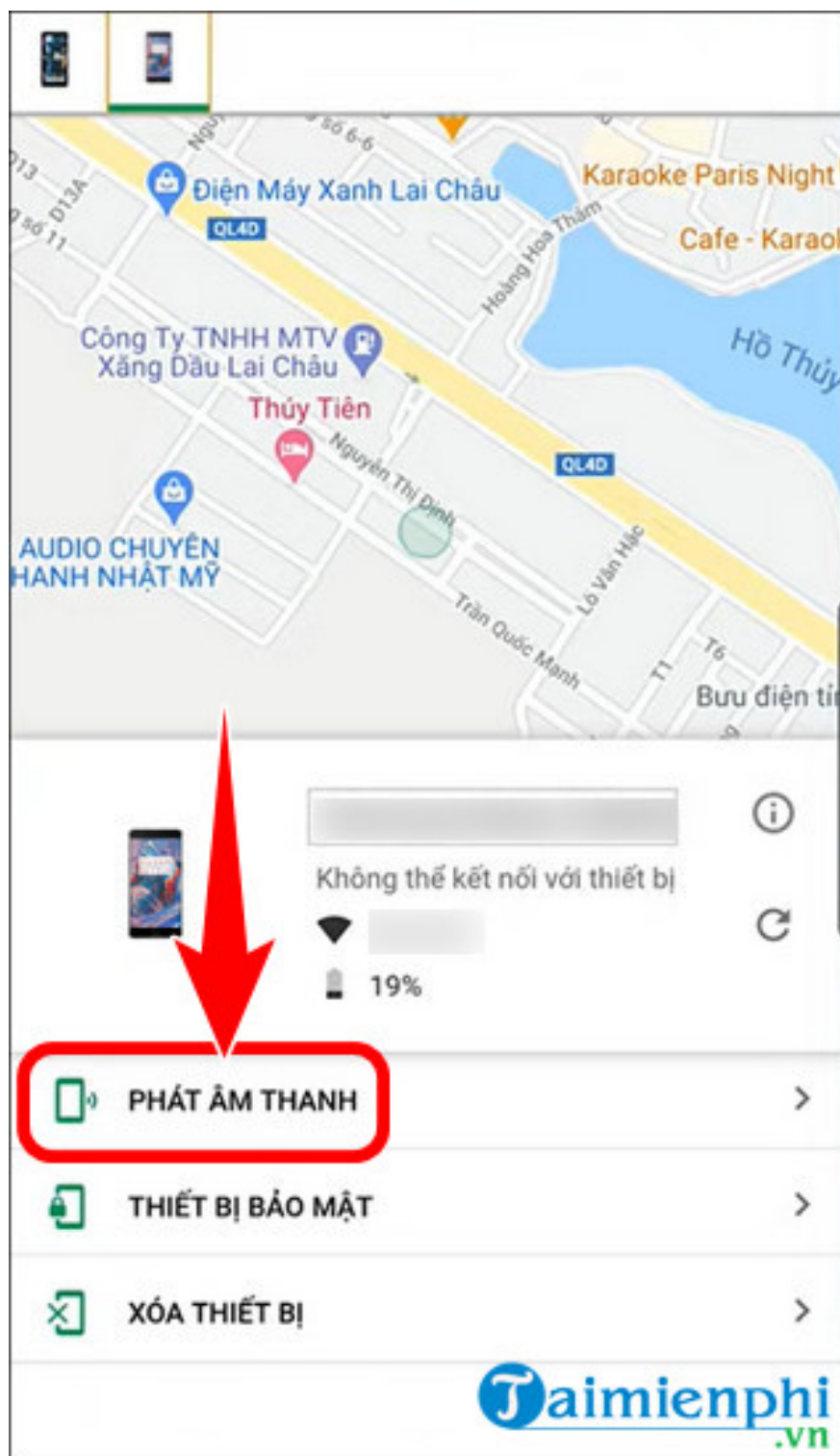
*Step 2:* Log in to **your Google account** => select **the device you want to find** .



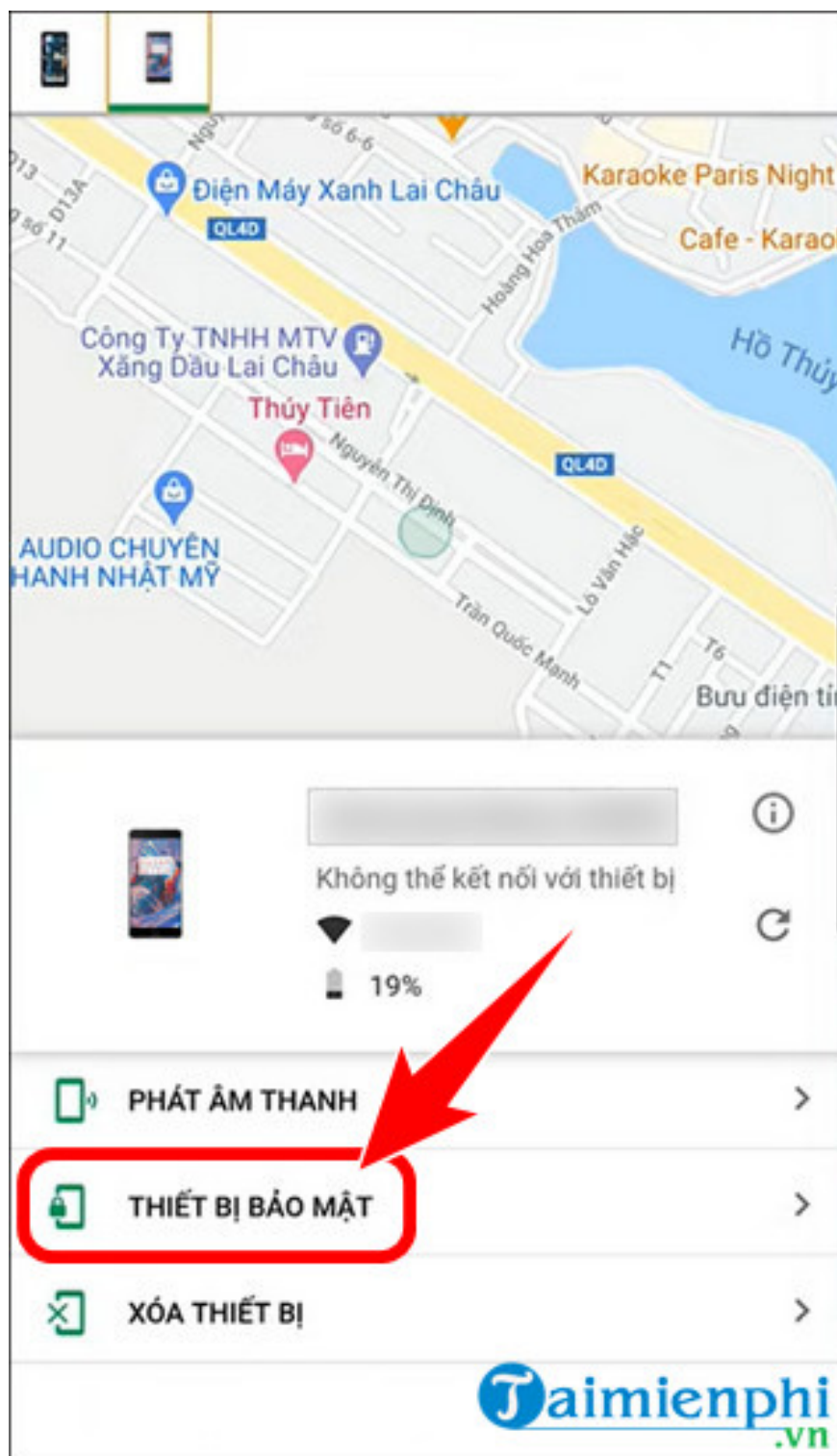
*Step 3:* Immediately, **the phone's location** will be displayed as shown below. Here you can choose from 3 different options.



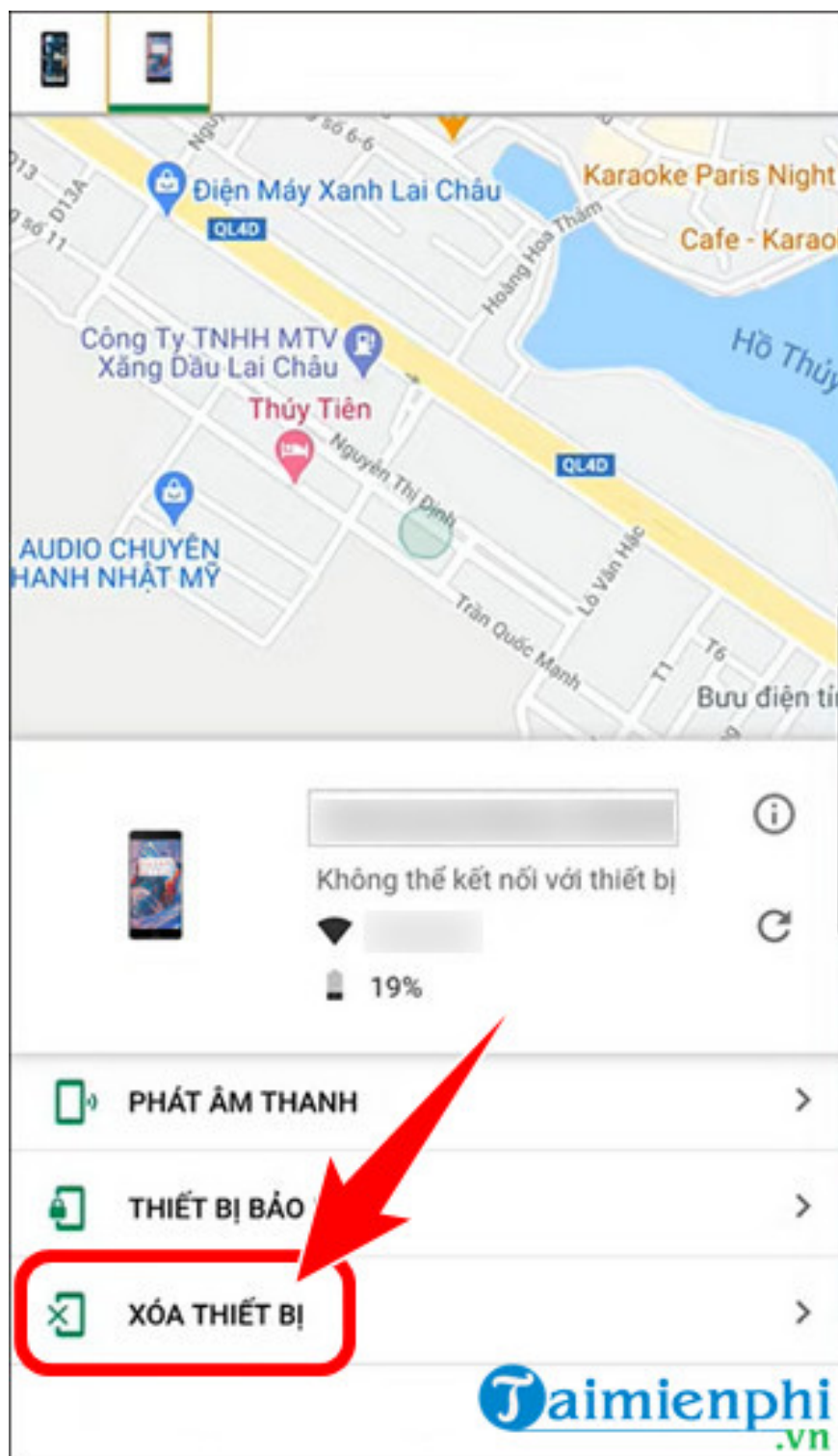
- **Sound Playback:** When this feature is activated, the phone will automatically play at maximum volume for 5 minutes.



- **Device security:** For those who want to lock their Android device so that no one can access personal data while trying to recover a lost phone.



- **Erase device:** Only use this option if you are certain your phone is lost and you want to completely erase all personal data on it.

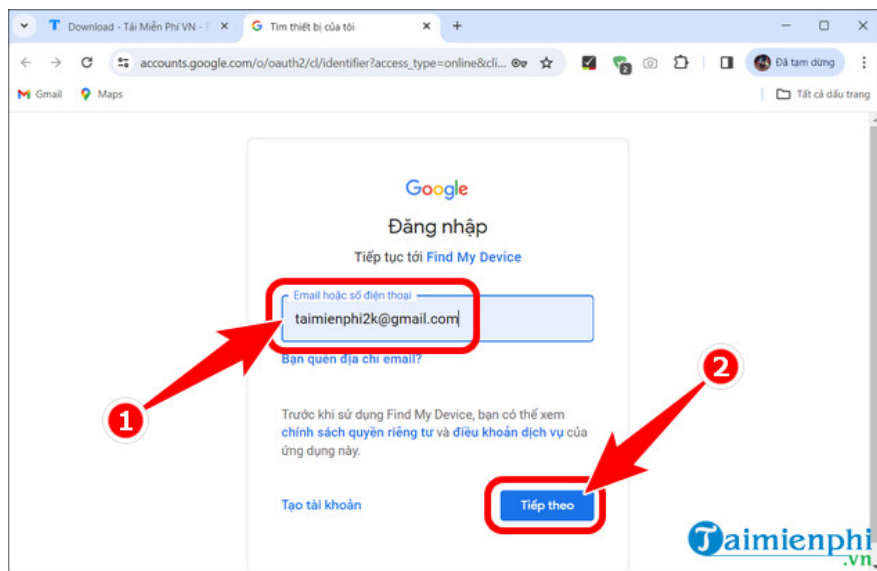


## *How to use Find My Device to locate your phone on a PC.*

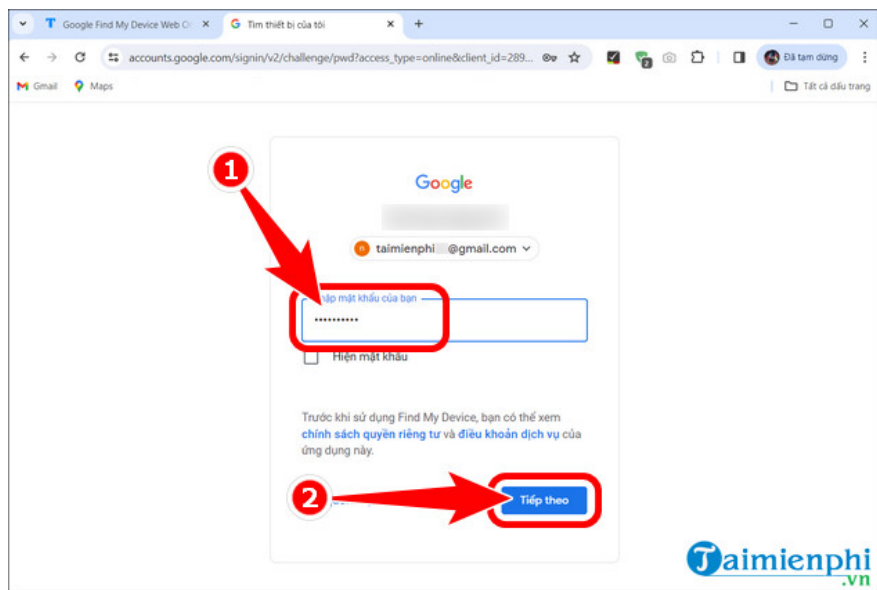
Compared to the Android web version on computers, the process is similar; readers simply access the Find My Device website and log in with their Google account to quickly locate their lost phone.

**Step 1:** Open **Google Find My Device Web Online** here.

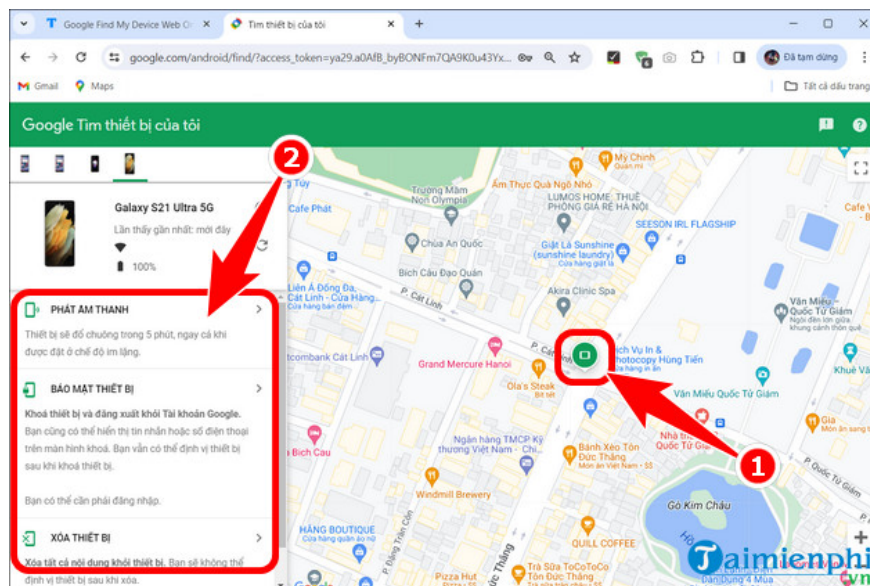
**Step 2:** Enter **your email address or phone number** => press **Next** .



- Enter **password** => **Next** .



**Step 3:** The phone's location will be displayed on the screen as shown below. Similar to the Android version, users also have 3 options including **play sound** , **secure device** , and **erase device** .



## *Notes on using Find My Device to locate a lost phone.*

- Users should set a password to unlock their phone to prevent thieves from disabling GPS location services.
- The location displayed on the map is not 100% accurate and may appear to be in the surrounding area.

The above is a detailed guide to help you use Find My Device to locate your lost phone and pinpoint its location remotely. Additionally, readers using iOS devices can also **find their lost iPhones with Find My iPhone** very effectively and accurately.

You finished reading the article "**How to use Find My Device to locate a lost phone on Android or PC.**" edited by the [TipsMake](#) team. We hope this article has provided you with many useful tech tips and tricks. You can search for similar articles on tips and guides. Thank you for reading and for following us regularly.