

How to use Disk Quota to limit Windows storage capacity

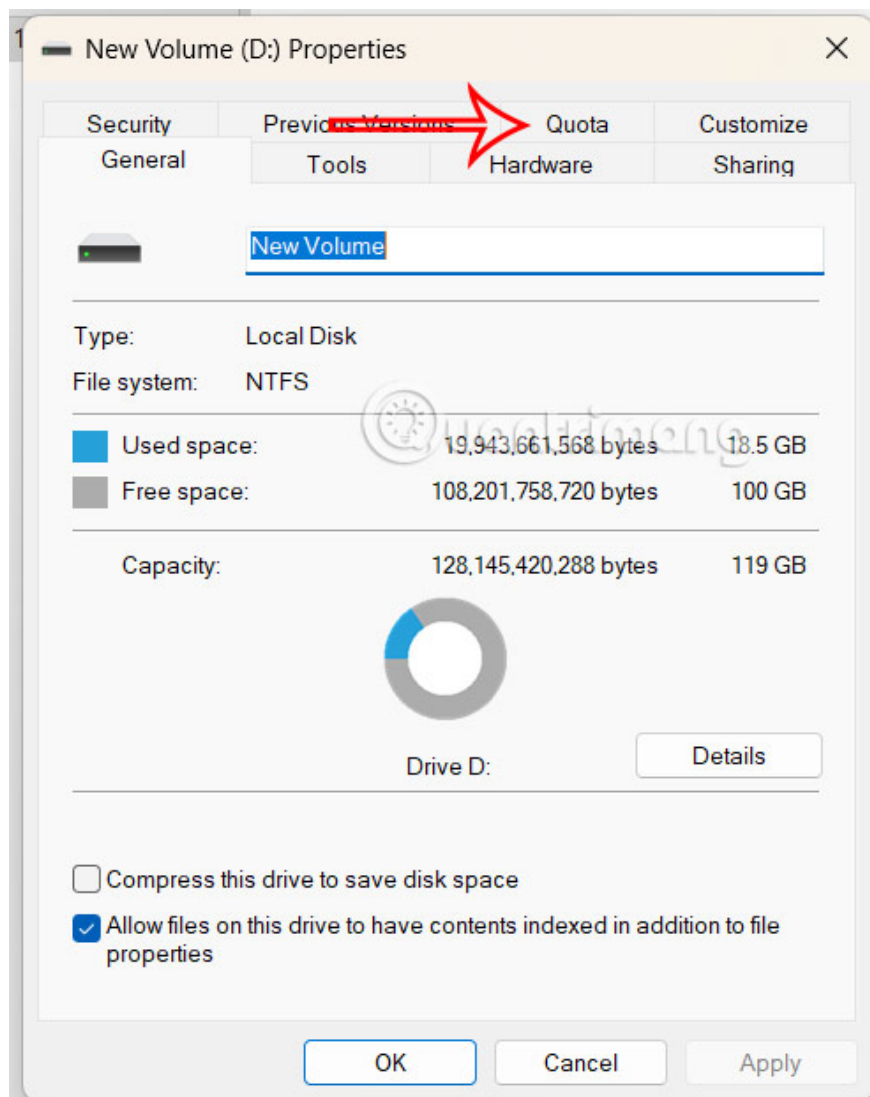
Disk Quota is a great way to control storage space on your computer, ensuring that users cannot use more storage space than is allocated.

Disk Quota is a great way to control the storage space on your computer, ensuring that users cannot use more storage space than is allocated. When you exceed the allocated storage space, you will see a warning and even prevent you from storing files. Here is a guide on how to use Disk Quota on Windows.

How to limit storage space on Windows using Disk Quota

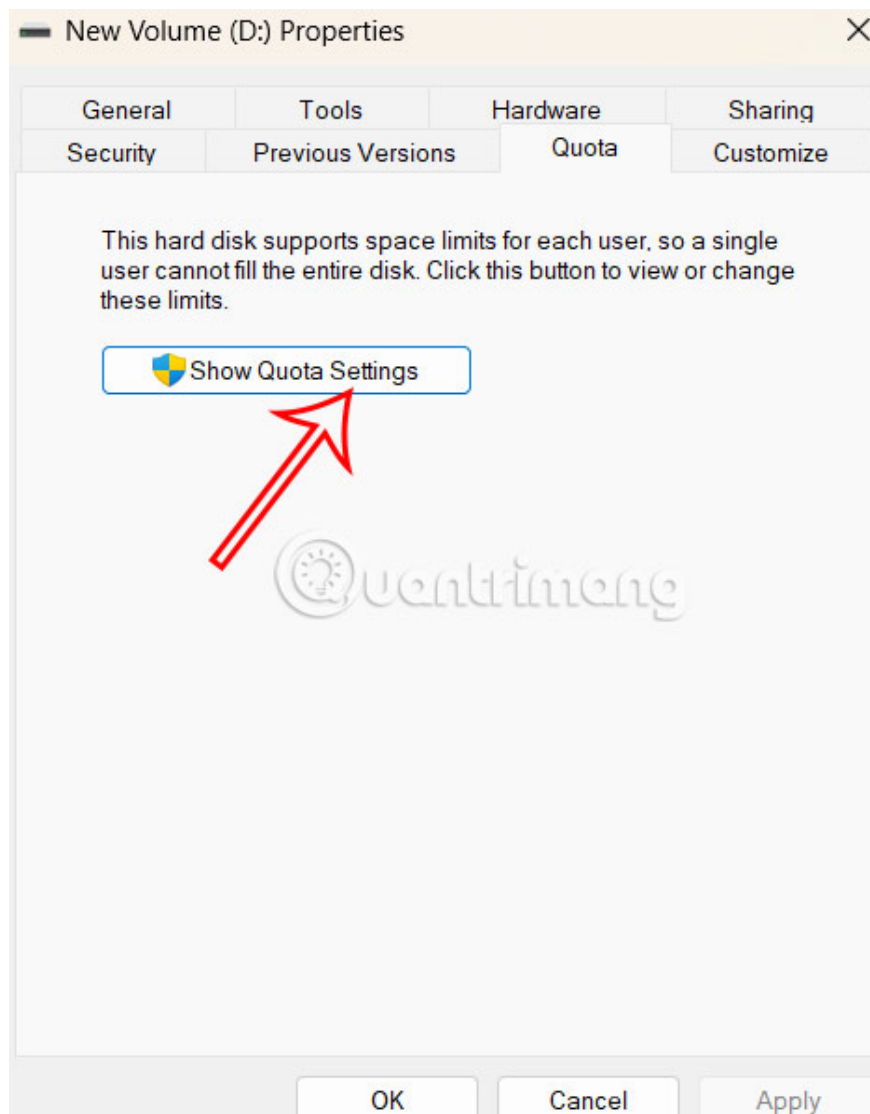
Step 1:

Open File Explorer, **right-click the drive** you want to limit and **select Properties** . Then, click **the Quota tab** to adjust.

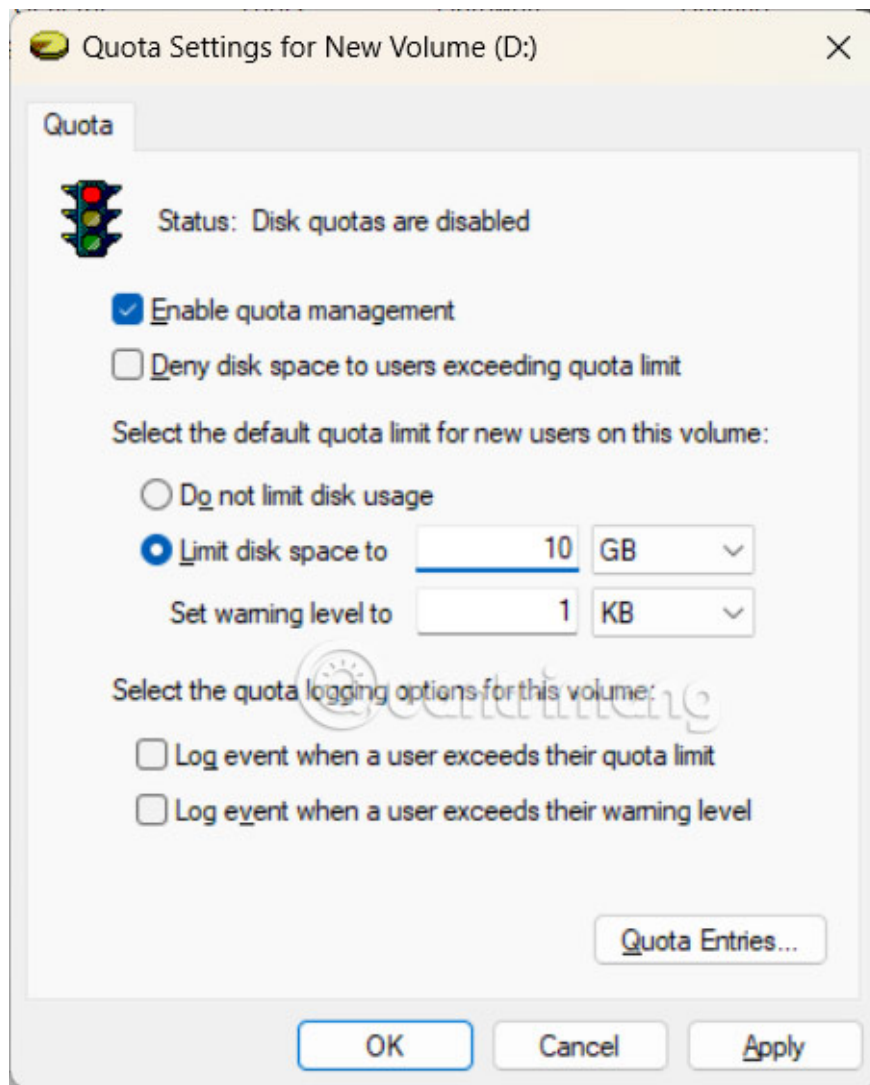


Step 2:

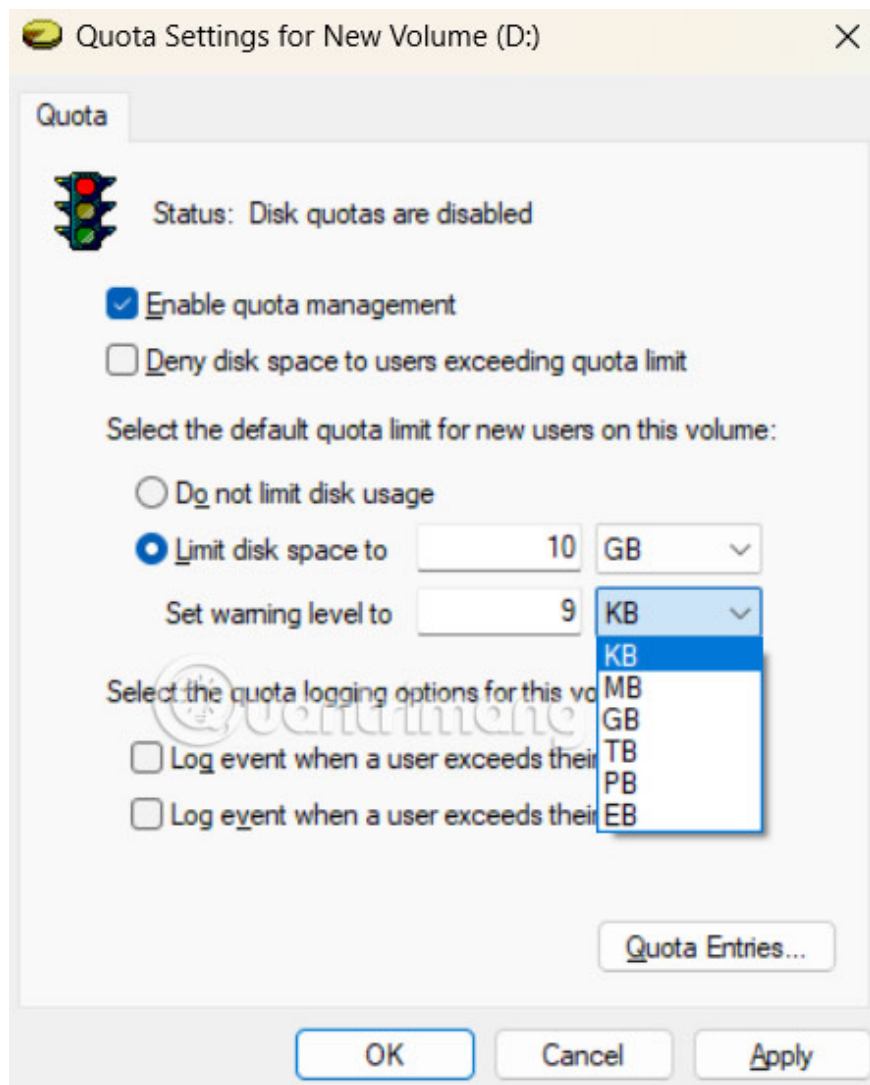
Click **Show quota settings** below.



Switch to the interface as shown, first you need to select **Enable quota management** to enable storage capacity limit. Below click **Limit disk space to** .

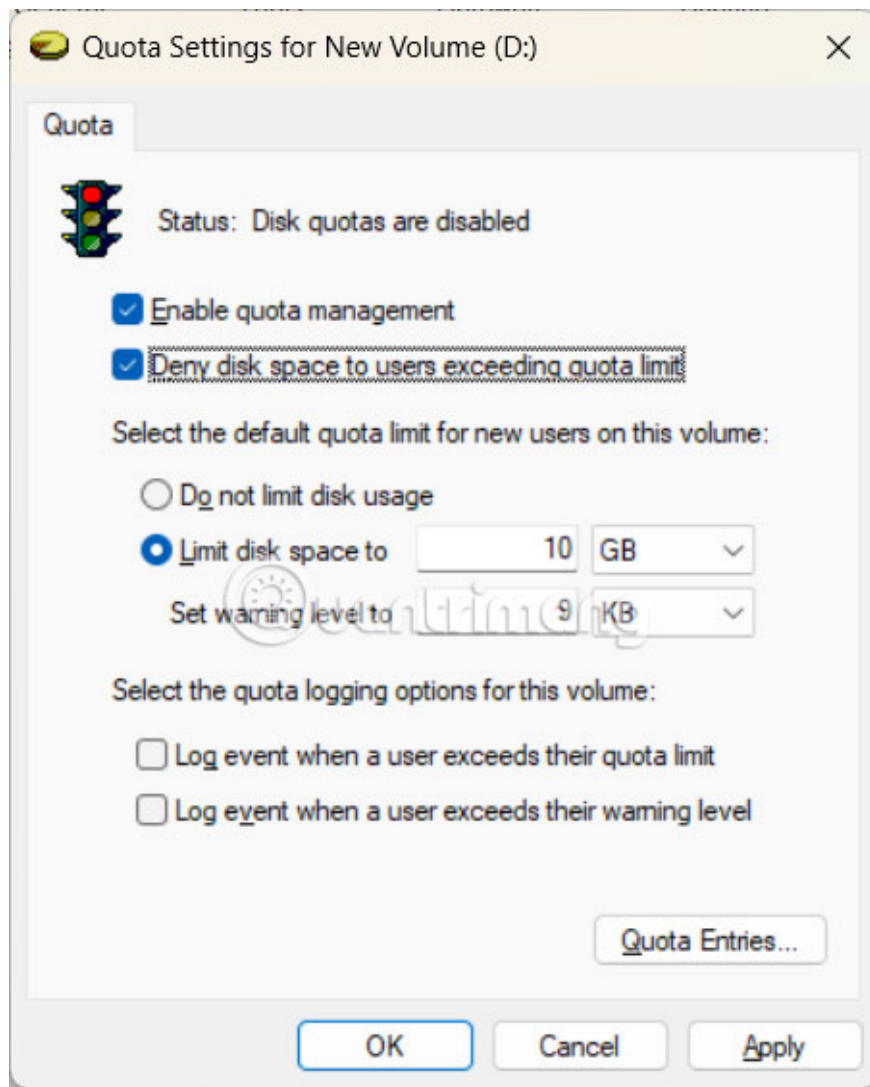


Enter the capacity limit you want to set for all users of that drive.



Step 3:

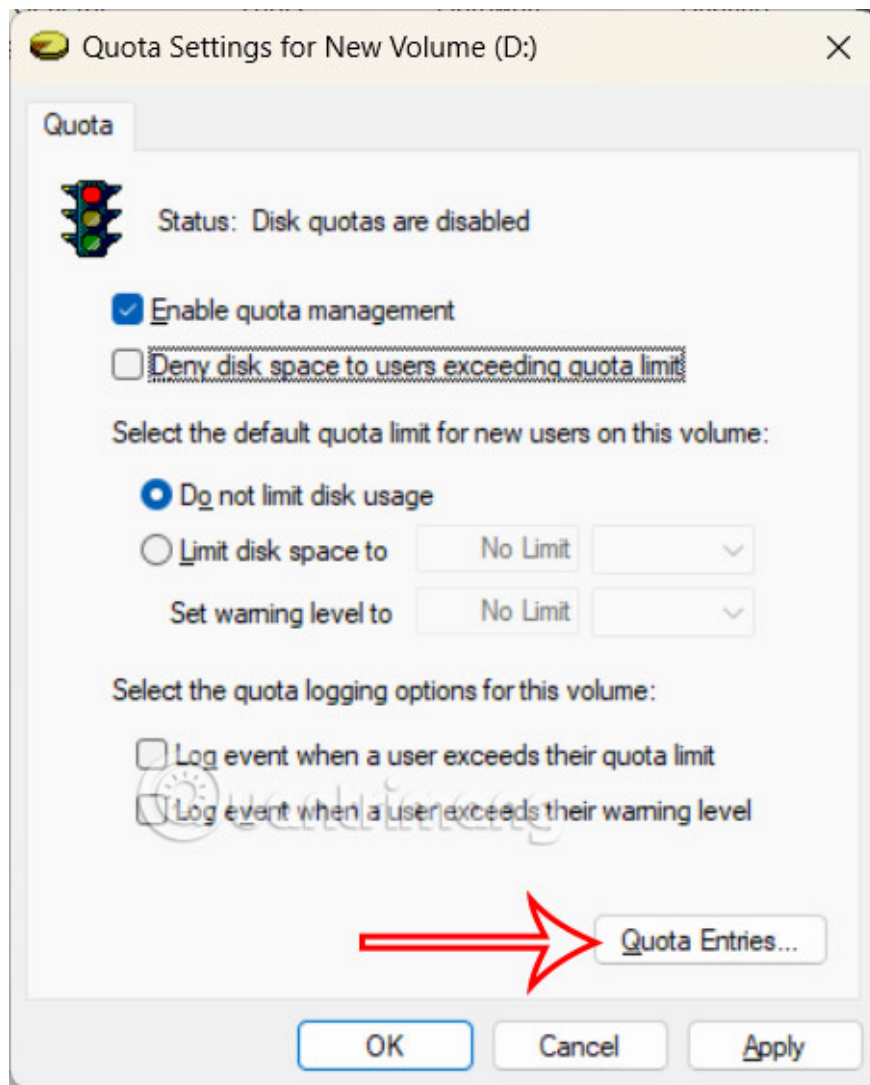
At **Set warning level to** , we **set the warning level** you want Windows to notify when the storage limit is about to be reached. If you want to **prevent users from storing more files** when they exceed their quota, **select Deny disk space to users exceeding quota limit**.



How to set storage limits for each user

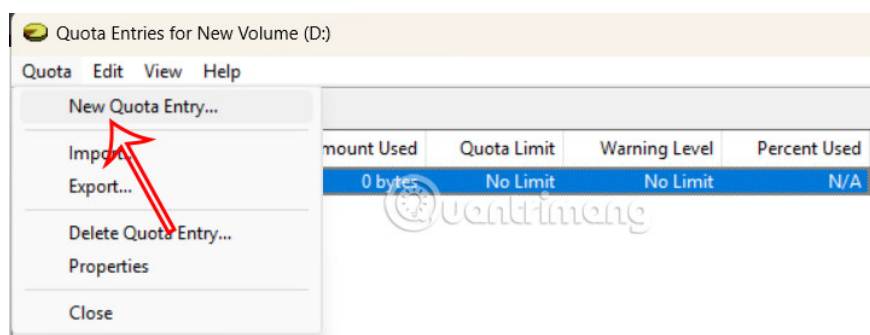
Step 1:

We also need to select **Enable quota management** and then click **Quota Entries** .

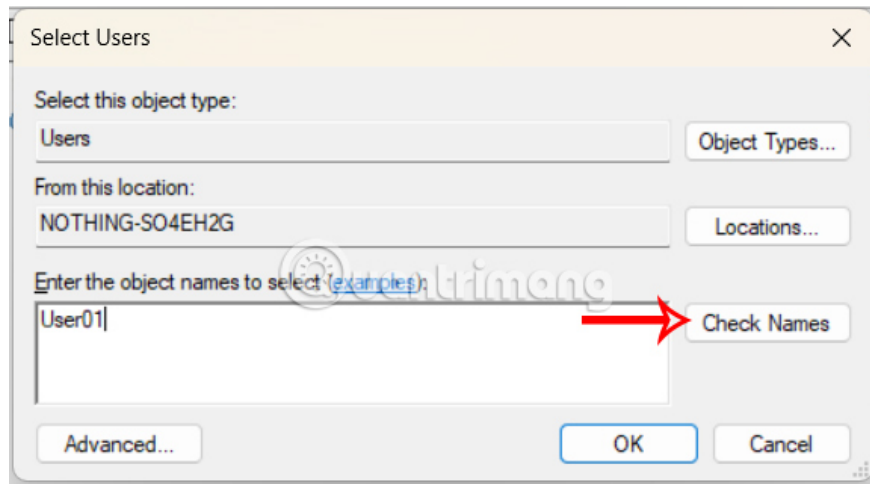


Step 2:

To display the new interface, **click on Quota and select New Quota Entry** in the displayed list.



In the interface displayed **at Enter the object names to select**, enter the name of the user **account** you want to set the storage limit for and then click Check Names below.



Step 3:

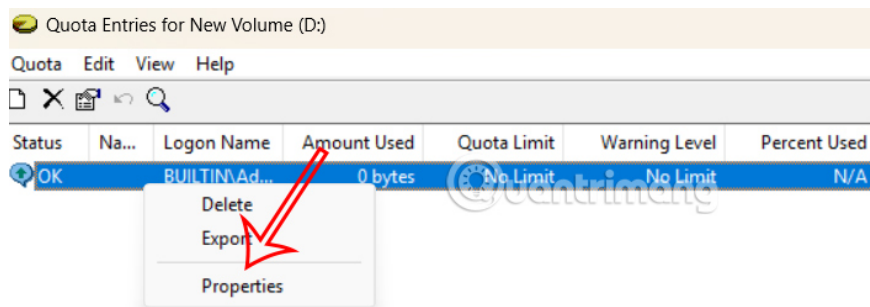
Click **Limit disk space** to and **set the storage limit for this account** . Under Set warning level to, also enter the warning level when the limit is approaching.

Repeat these steps for all user accounts you want to limit.

Storage Usage Monitoring Guide

You click on Quota Entries and see a list of different user accounts along with their usage. Right-click on the account and **select Properties** .

Here you can directly change the amount of storage allocated to an account.



How to turn off storage limit

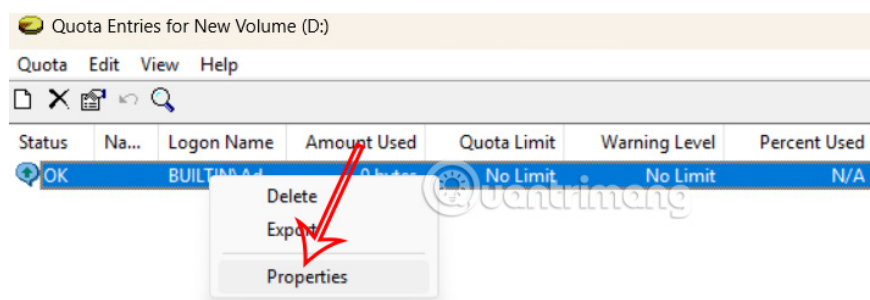
Step 1:

In the Quota Settings for interface, **uncheck Enable quota management** . To turn off the capacity limit for each account, click **the Quota Entries button** .



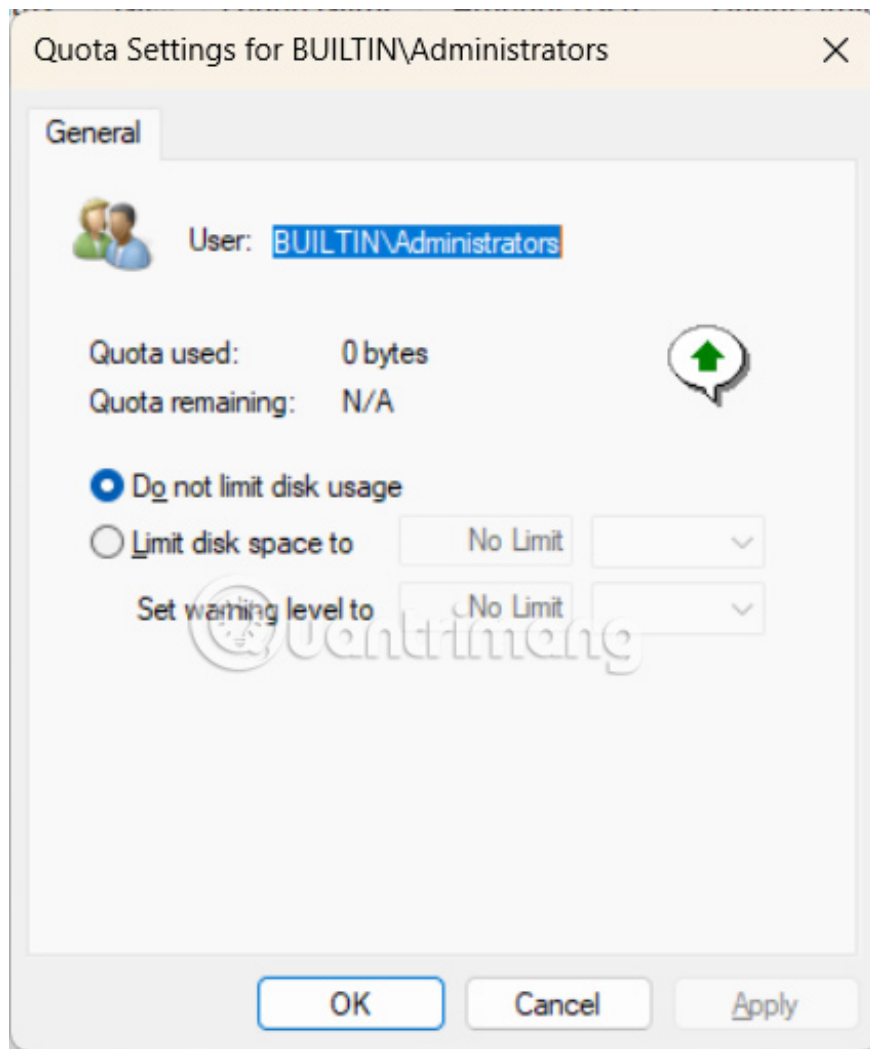
Step 2:

Right- click on the account you want to disable and select **Properties** .



Step 3:

Then you check **Do not limit disk usage** to turn off the storage limit for that account.



You finished reading the article "**How to use Disk Quota to limit Windows storage capacity**" edited by the [TipsMake](#) team. We hope this article has provided you with many useful tech tips and tricks. You can search for similar articles on tips and guides. Thank you for reading and for following us regularly.