

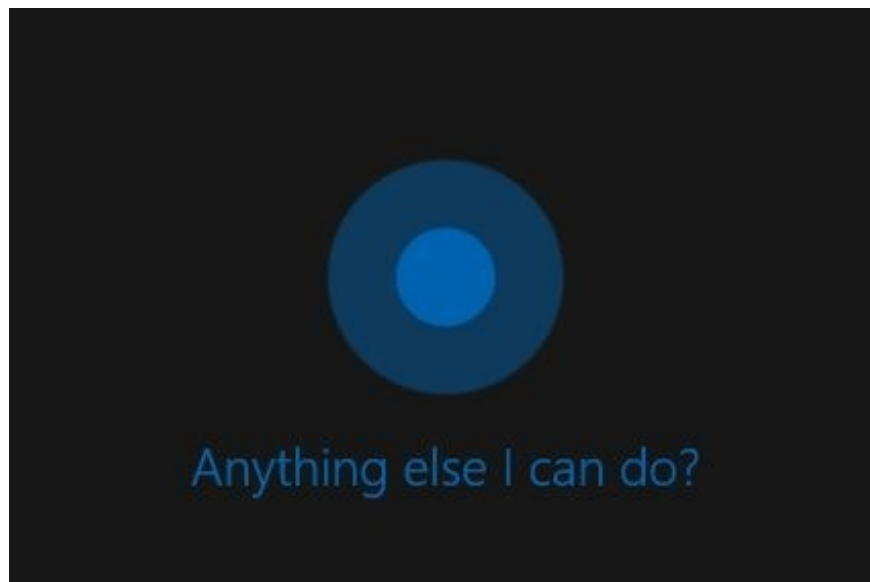
How to use Cortana to turn off or restart Windows 10?

Cortana virtual assistant is one of the new features built into Windows 10 and displayed right on the Taskbar. Users only need to speak into the device's microphone, ask questions or issue control commands, Cortana will answer the question or follow the user's voice command.

Cortana virtual assistant is one of the new features built into Windows 10 and displayed right on the Taskbar. Users only need to speak into the device's microphone, ask questions or issue control commands, Cortana will answer the question or follow the user's voice command.

One drawback of Cortana is that it is not possible to shutdown, reboot, or switch to Hibernate and Sleep mode on Windows 10.

However, users can use Cortana to search for files and launch these files. So we can use this feature of Cortana to perform shutdown, booting . on Windows 10.



Use Cortana to shutdown, reboot, switch to Hibernate or Sleep mode on Windows 10

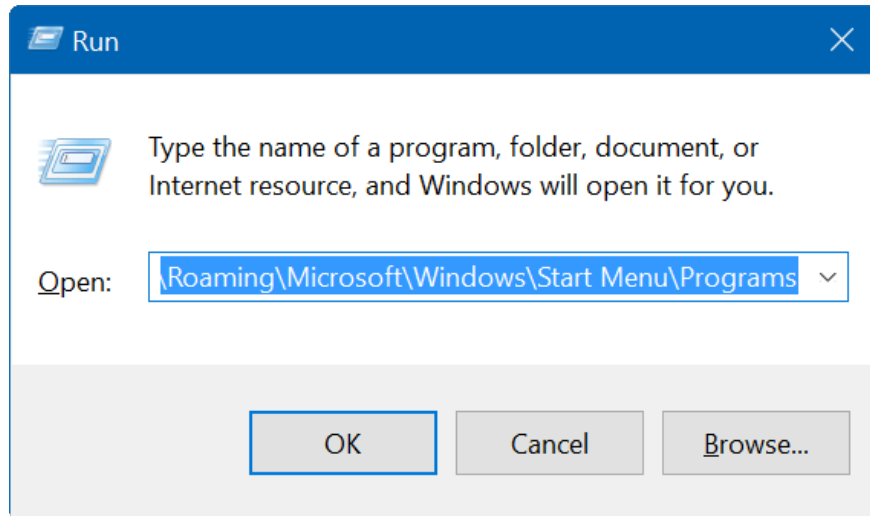
Step 1:

First you need to create a shortcut to shutdown, reboot, switch to Hibernate mode and Sleep mode in the folder below:

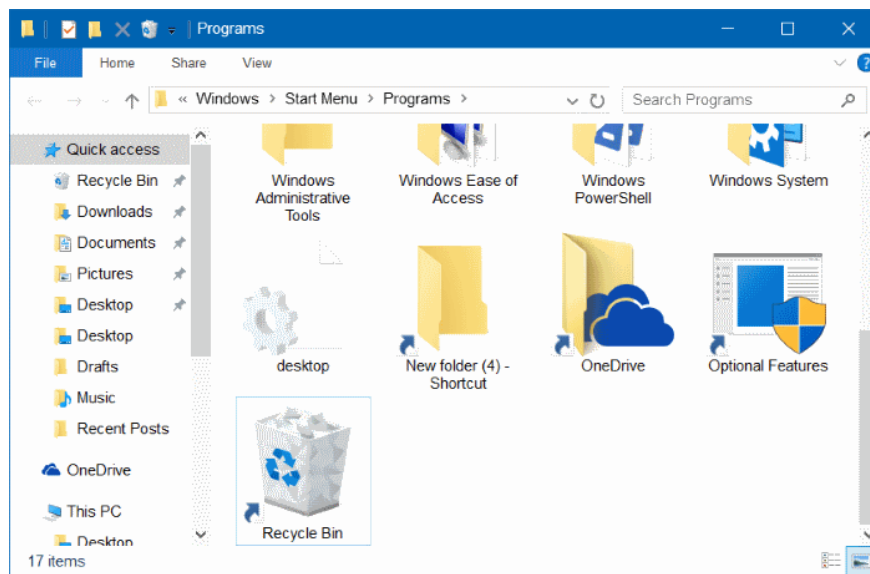
% userprofile% AppDataRoamingMicrosoftWindowsStart MenuPrograms

To do this, first press the **Windows + R** key combination to open the Run command window. At the Run command window, enter the path below and press Enter to open the Program folder:

% userprofile% AppDataRoamingMicrosoftWindowsStart MenuPrograms



At this time, the **Program** folder interface appears.



Step 2:

On the Program folder interface, right-click any space and then select **New**, then select **Shortcut**, then enter one of the following commands into:

- Shut down: **shutdown -s -t 0**

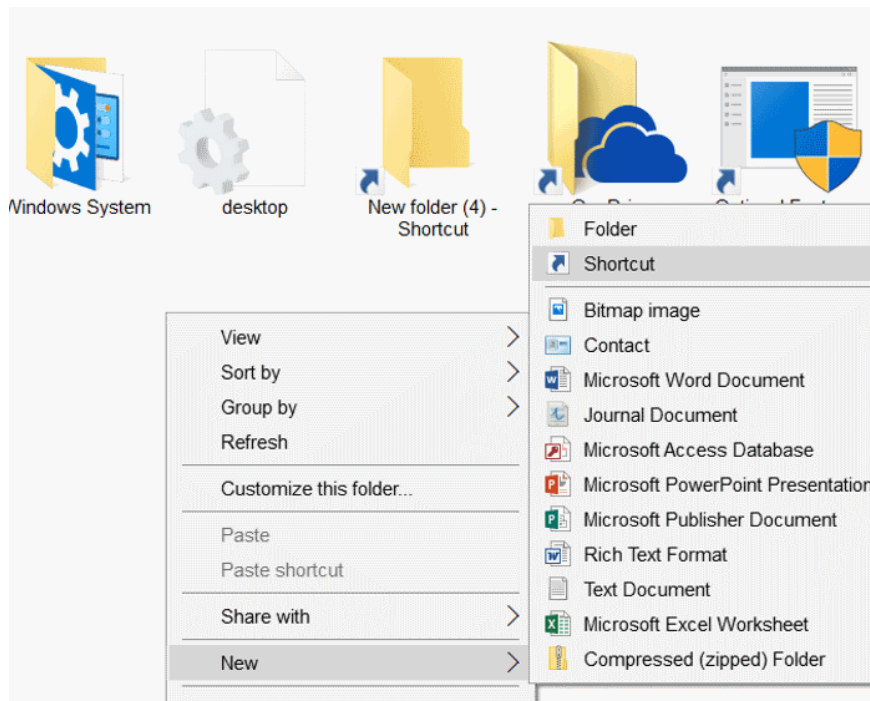
- Restart the computer: **shutdown -r -t 0**

- Log off: **Logoff: shutdown -l -t 0**

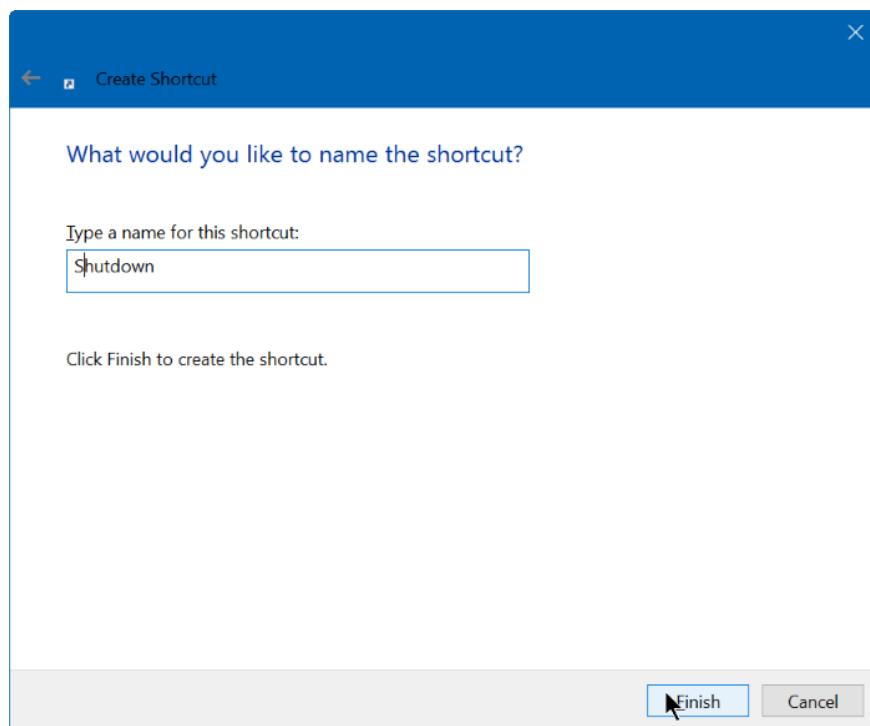
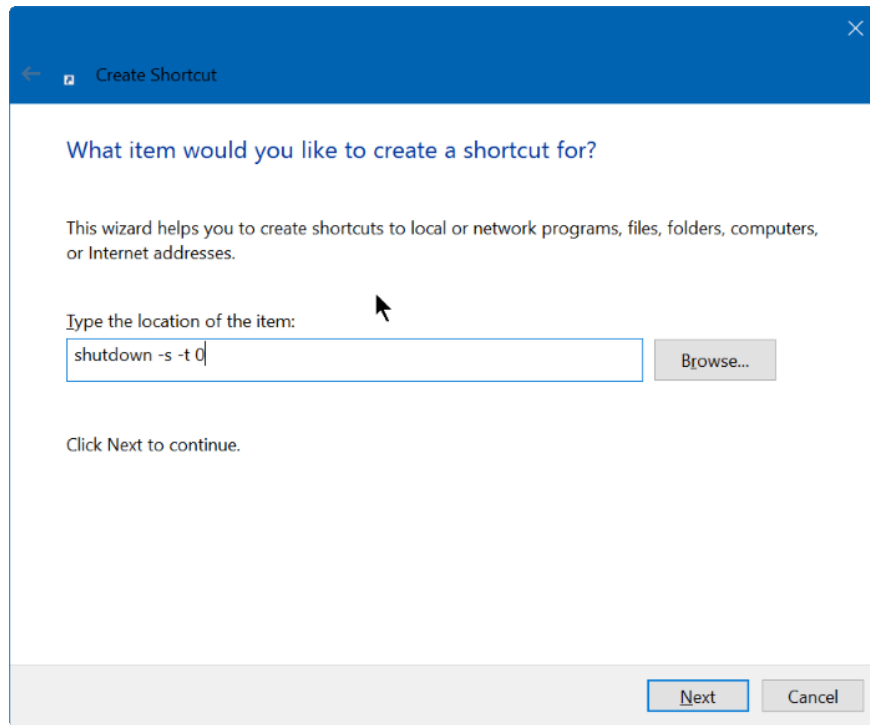
- Hibernate mode (hibernation mode):

C: Windows\System32\rundll32.exe powrprof.dll, SetSuspendState 0.1.0

Note : In the Hibernate command (hibernate mode), replace drive C with the drive where you installed Windows 10 (if you installed Windows 10 on another drive).

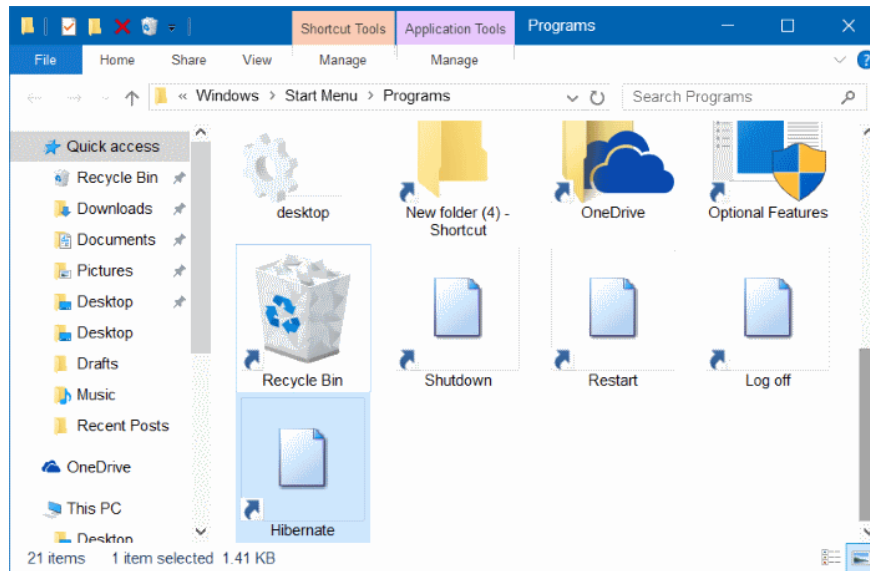


Next name the Shortcut to Shutdown, restart, hibernate or sleep and click **Finish** to create a shortcut.



Step 3:

After creating the shortcut, you can say Hey Cortana to call Cortana and you can say Open shutdown to turn off your Windows 10 computer.



Refer to some of the following articles:

1. Instructions to turn off ads on the Screen Lock screen Windows 10
2. Start Windows 10 "as fast as the wind" with Fast Startup
3. How is the Cotrol Panel and the Settings menu on Windows 10 different?

Good luck!

You finished reading the article "**How to use Cortana to turn off or restart Windows 10?**" edited by the [TipsMake](#) team. We hope this article has provided you with many useful tech tips and tricks. You can search for similar articles on tips and guides. Thank you for reading and for following us regularly.