

# How to use Cortana to shutdown, reboot or Sleep quickly

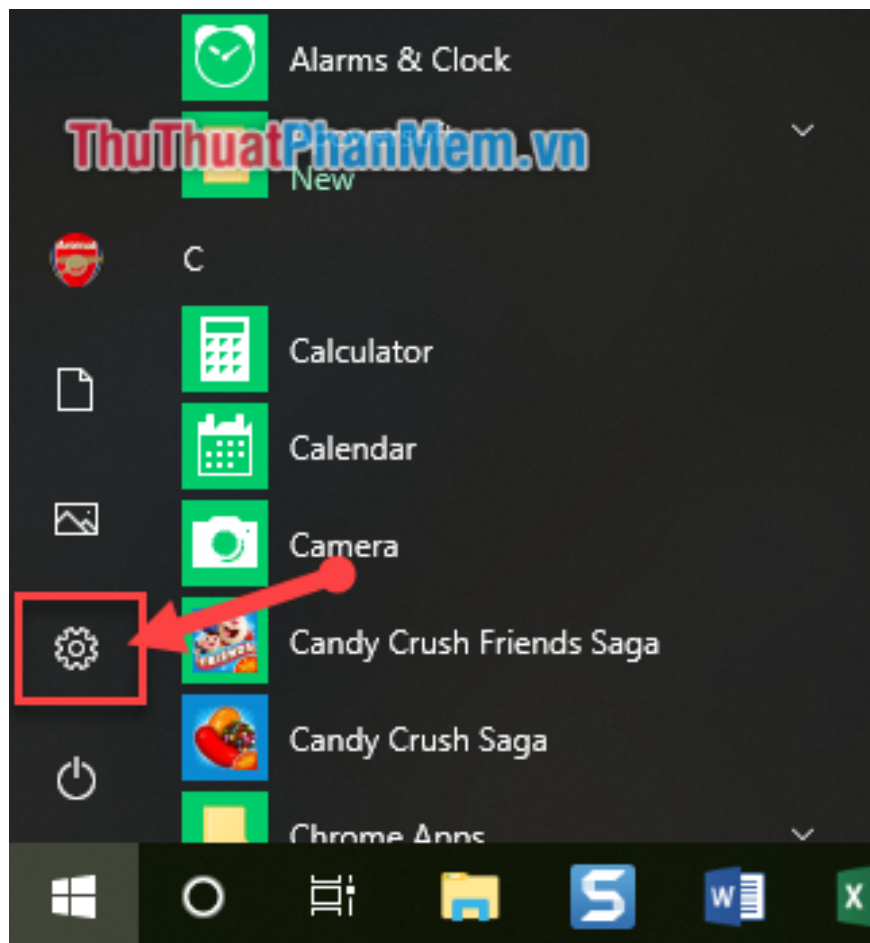
Have you ever wished that you could control your PC via voice? With the latest Windows 10 operating system comes with Cortana technology that will help you realize that, you can order to shutdown, restart or put the computer into Sleep mode. So how do you use Cortana to do the above?

Have you ever wished that you could control your PC via voice? With the latest Windows 10 operating system comes with Cortana technology that will help you realize that, you can order to shutdown, restart or put the computer into Sleep mode. So how do you use Cortana to do the above? Let's go with *TipsMake.com* to find out through this article!

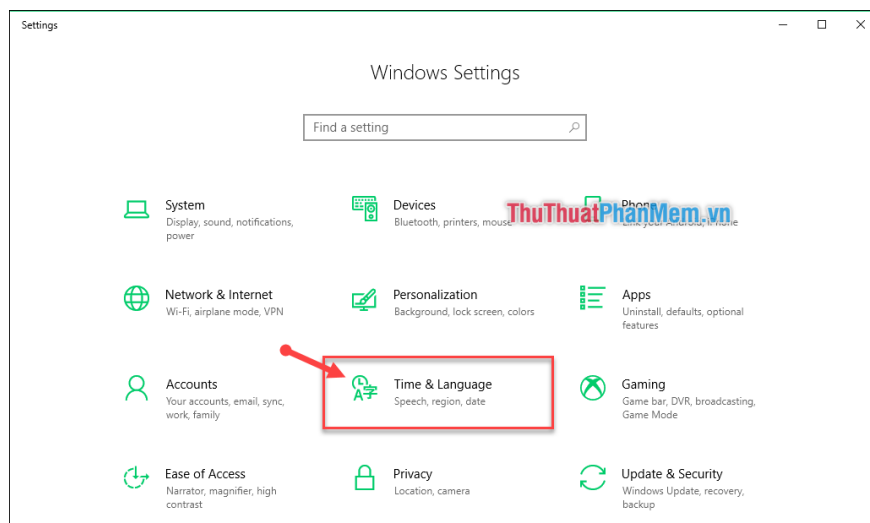


First of all to use Cortana, you have to roam to the United States (USA) by:

**Step 1** : Open the *Start Menu and* select *Settings* .

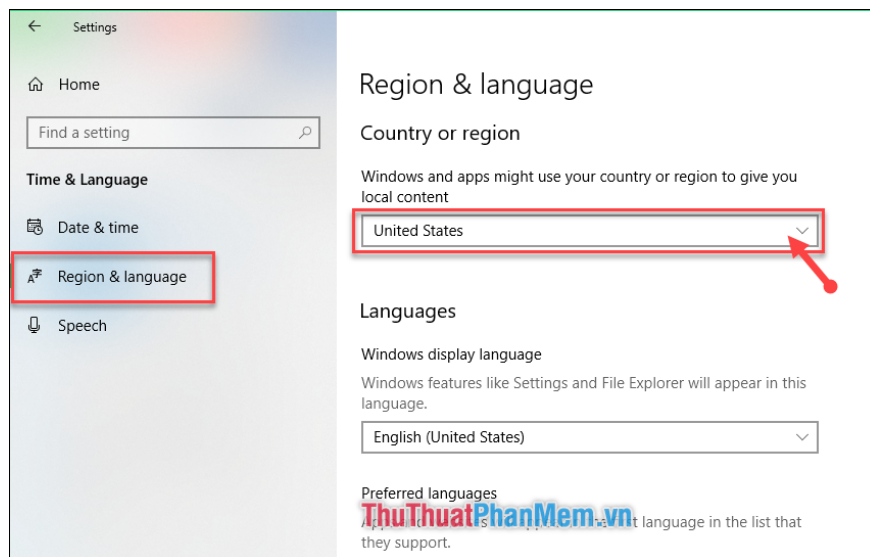


**Step 2** : Here you select *Time & Language*.



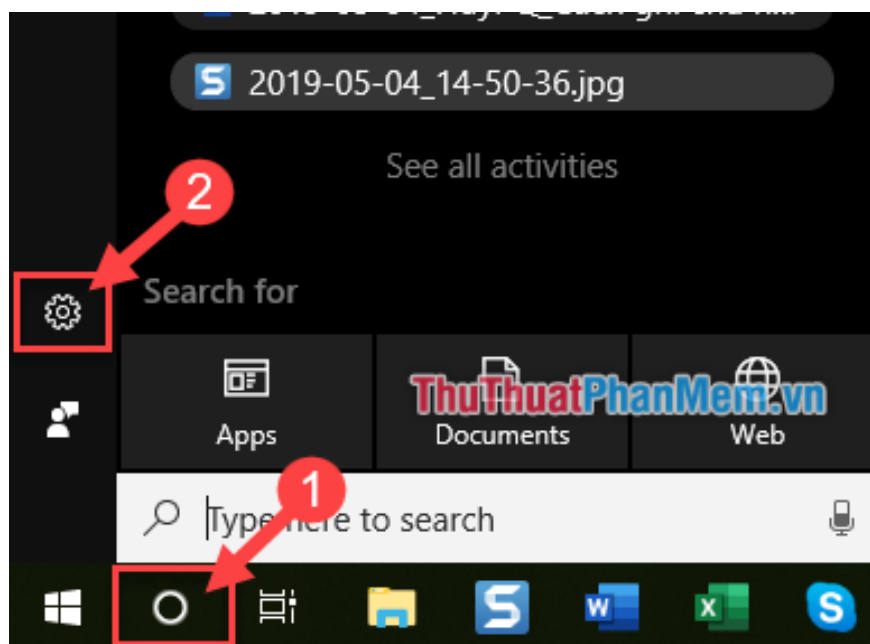
**Step 3** : Switch to the **Region & language** tab.

In **Country or region**, select *United States* .

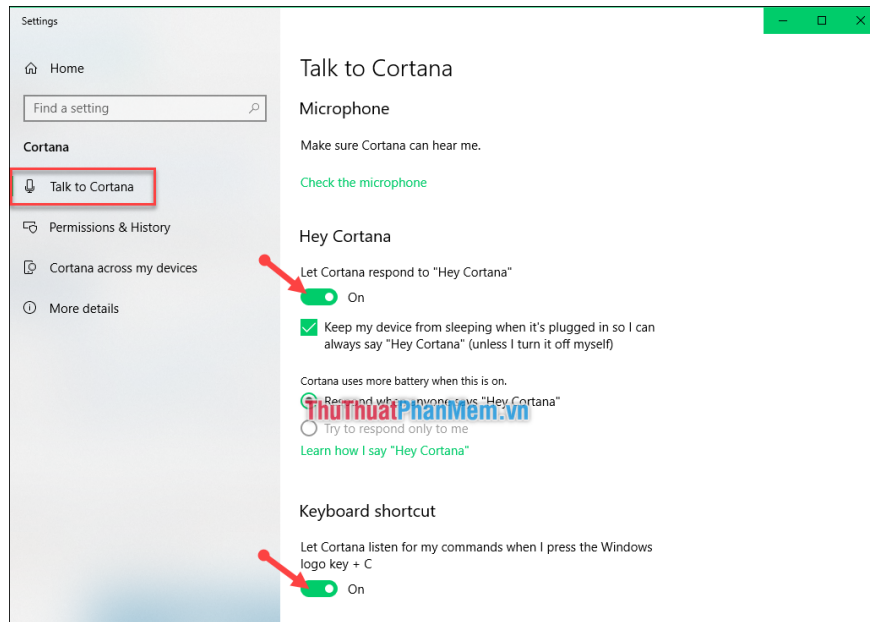


**Step 4** : Cortana will now appear in the system's Search tool. However, to order Cortana you need to activate call mode with a command or shortcut to turn on Cortana by:

- (1) Select the system's **Search** tool .
- (2) Then click on **Install** .

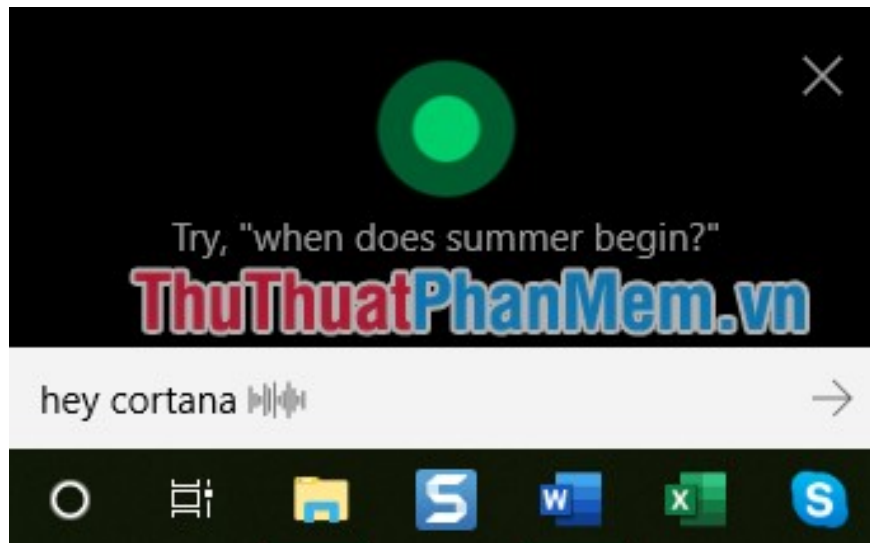


**Step 5** : On the **Talk to Cortana** tab, you need to activate 2 items: *Hey Cortana* and *Keyboard shortcut* .



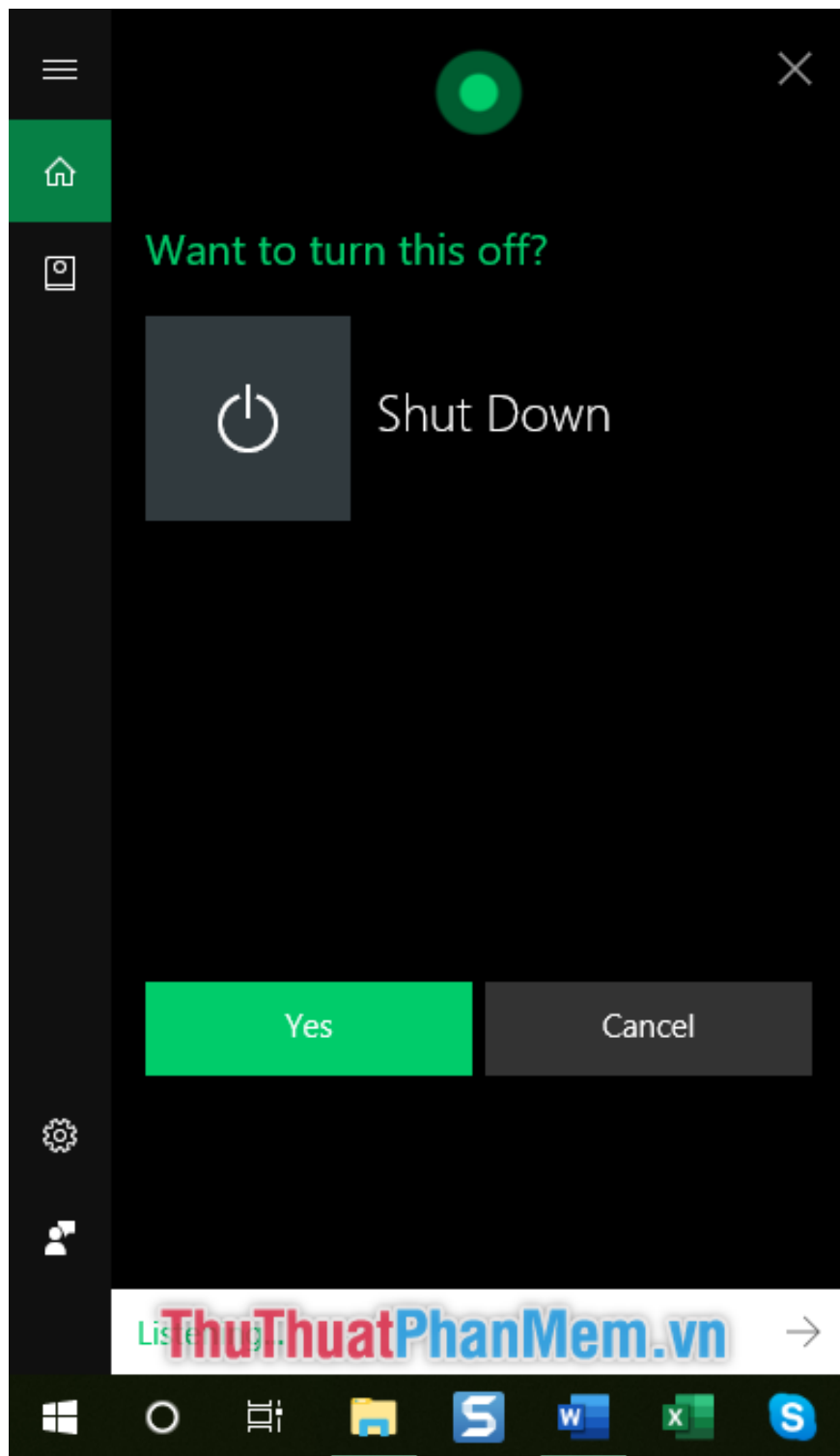
**Step 6** : Now to use Cortana you have 2 ways:

- Use the command " **Hey Cortana** ".
- Use the key combination **Windows + C** .



**Step 7** : At this time to execute the command you just need to say in the English meaning such as:

- **Shut down:** *Shutdown* .
- **Restart the computer:** *Restart, Reboot* .
- **Sleep mode:** *Sleep* .



To continue the shutdown, say " **Yes** " and vice versa to cancel the action you say " **No** ".

Thank you for following the article. Have a good time with Cortana.

You finished reading the article "**How to use Cortana to shutdown, reboot or Sleep quickly**" edited by the [TipsMake](#) team. We hope this article has provided you with many useful tech tips and tricks. You can search for similar articles on tips and guides. Thank you for reading and for following us regularly.

---

