

How to use Canva's Magic Studio to edit designs

Canva doesn't just provide you with design templates and basic editing tools. Its Magic Studio includes AI-powered editing tools to help you refine your designs within minutes.

Graphic design can be complicated and time-consuming. The process of generating ideas for designs and editing them can take hours - even days - to complete the work. But things don't have to be that way.

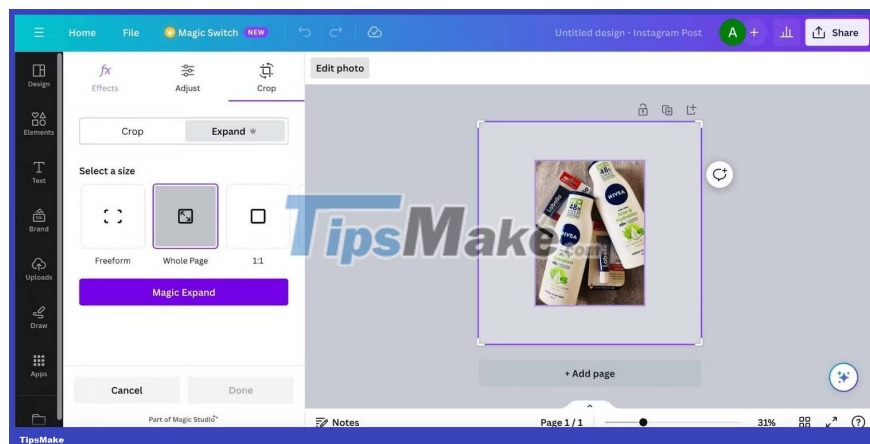
Canva doesn't just provide you with design templates and basic editing tools. Its Magic Studio includes AI-powered editing tools to help you refine your designs within minutes. Get ready to learn how to use Canva's editing tools in Magic Studio.

How to use Canva's Magic Studio to edit designs

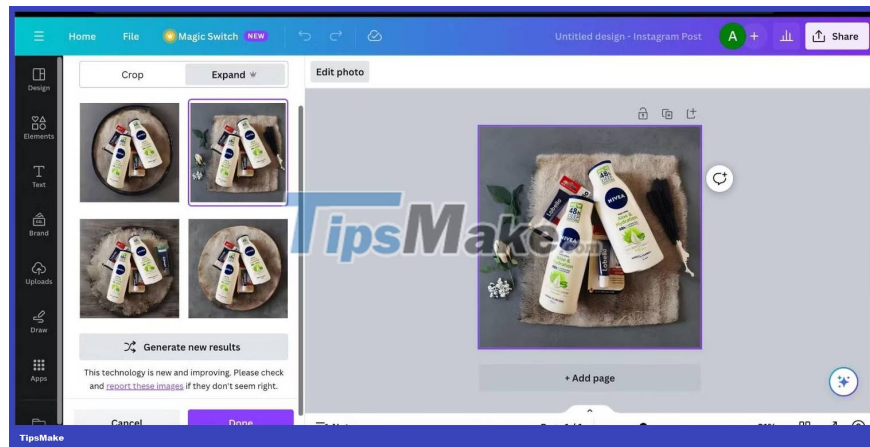
If you're willing to learn, you can do more than just create a logo on Canva. Use Canva's Magic Studio to take your design skills to the next level. Start by logging into your Canva account, upload or select a photo and click **Edit photo**. Then follow the steps in each section below.

1. Magic Expand

It's always a problem when the image is too small for your design on Canva. As you know, cropping or stretching an image will compromise its integrity. That's where Magic Expand comes in. It lets you choose from a variety of options, like scaling the image to fit the screen, depending on the situation.



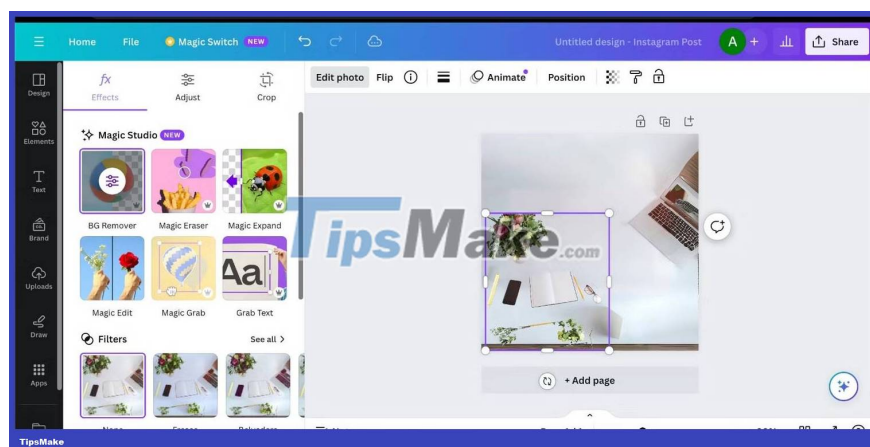
Select **Magic Expand** and find the right size from the options provided. For example, **Whole Page** was selected. When you're done, click the **Magic Expand** button.



Canva will show you several options to choose from. You'll notice elements added to your design to fill the space. If you want to try again, click **Generate new results** . Otherwise, choose your favorite design and click **Done** .

2. Magic Grab

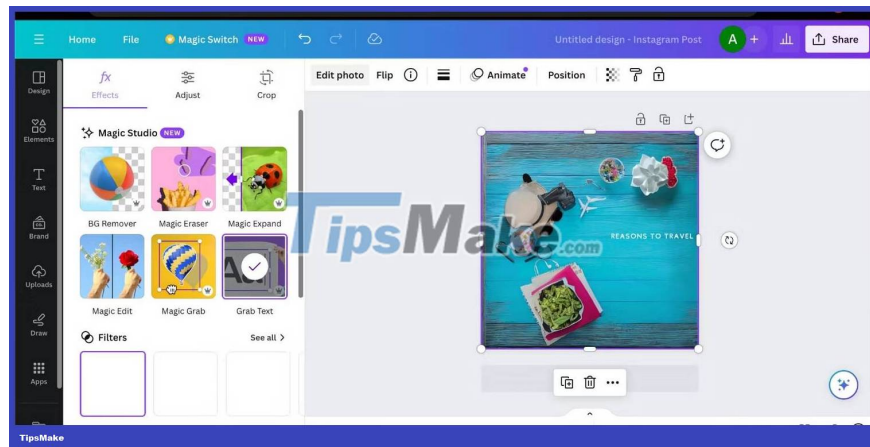
If you're unhappy with the position of an object in your image, you can move it anywhere on your photo or resize it using Magic Grab.



Select **Magic Grab** and click on the topic you want to grab. Move it to another location or resize it to your liking. The background will remain the same. Continue editing the image as desired.

3. Grab Text

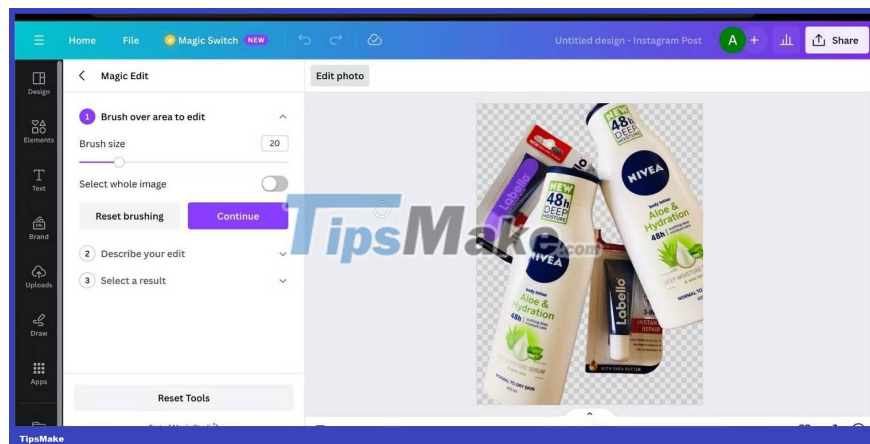
This tool works similarly to Magic Grab, except it's used to edit text on your photos. To use text on your image, click **Grab Text** and drag it to where you want to place it.



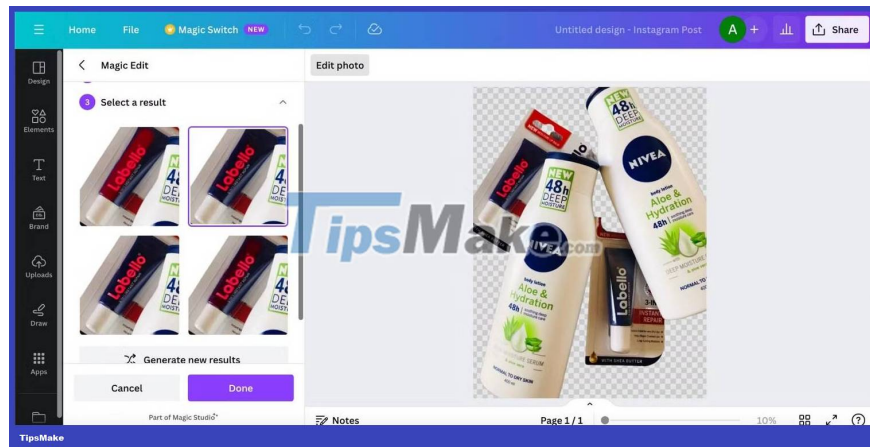
You can also delete, edit, and expand text with Canva's Magic Write tool.

4. Magic Edit

Not all good photos are perfect. Sometimes they come close to what you expect, but something still goes wrong. It could be a minor issue, such as an object having the wrong color or texture. With Magic Edit, you can modify parts of an image or the entire image with a simple prompt.



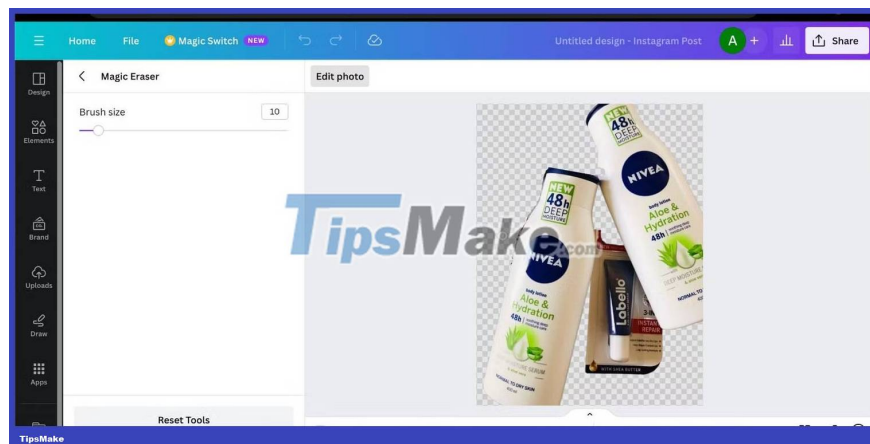
Select **Magic Edit** . Hover over the image to see if you're satisfied with the brush size. Adjust the size if needed by moving the slider on the left and hovering over the object you want to adjust. Click **Reset brushing** if you make a mistake. If not, click **Continue** .



Now, describe what you want to change in the text box. The example asked Canva to change the color to red. Once done, click **Generate** . Choose the option you like best and click **Done** when you are satisfied.

5. Magic Eraser

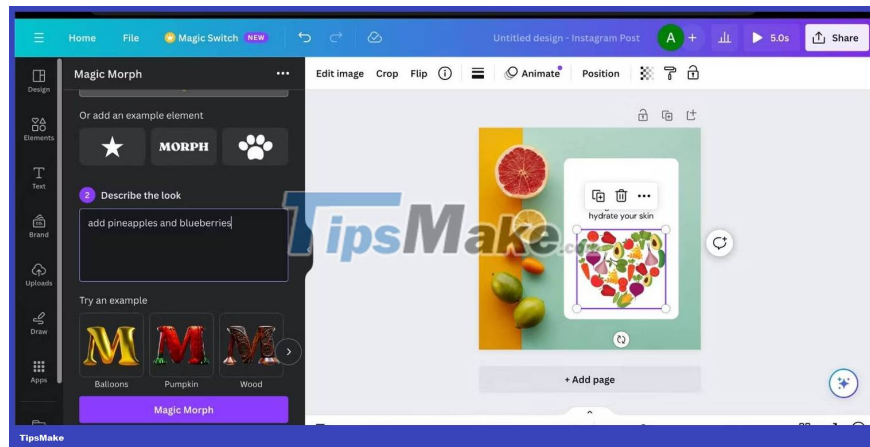
Misplaced objects cannot create a good photo. These can be distractions, such as strangers and unimpressive objects in the background. Luckily, you can use Magic Erase to edit unwanted objects out of images.



Select **Magic Eraser** and sweep over the object you want to remove in one motion. The Magic Eraser tool is a bit more complicated and time-consuming than other tools, so take the time to do it right. Click the back arrow in the upper left corner when you're done.

6. Magic Morph

The final tool is Magic Morph, which adds depth and interest to your designs using text prompts. You can use Magic Morph to change the texture of an object and add fun elements to your photos.



Choose a photo that has shapes and elements that you can isolate for editing. Next, click **Apps** in the lower left corner of the screen. Type "**Magic Morph**" in the search bar, select it, and click **Open** . Click on the component you want to move up and enter the prompt in the text box. Click the **Magic Morph** button and watch your photo come to life.

Now, choose your favorite option and adjust its position on the image.

You finished reading the article "**How to use Canva's Magic Studio to edit designs**" edited by the [TipsMake](#) team. We hope this article has provided you with many useful tech tips and tricks. You can search for similar articles on tips and guides. Thank you for reading and for following us regularly.