

How to use Canon printers for new users

How to use Canon printers for new users. To be able to use the Canon printer first you need to plug in the printer and connect the printer to your computer. The power connector is a three-pin plug, the connector that connects to the computer is a USB type B connector, you can easily find the connection socket on the computer and plug it into the computer via the USB connector.

Canon printers are one of the popular printers for office workers. If you are new and have not used the Canon printer system yet, TipsMake.com will give you the following article to talk about how to use Canon printers.



1. Installation of hardware and software installation

To be able to use the Canon printer first you need to plug in the printer and connect the printer to your computer.

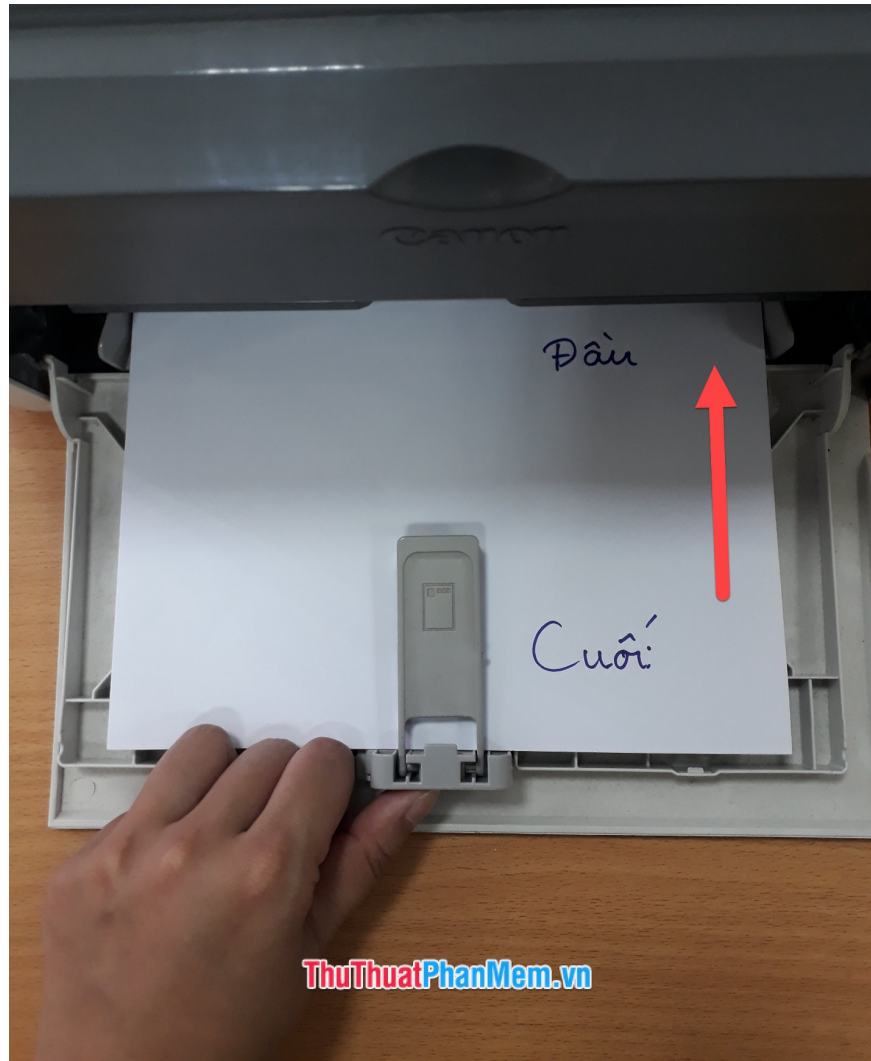
The power connector is a three-pin plug, the connector that connects to the computer is a USB type B connector, you can easily find the connection socket on the computer and plug it into the computer via the USB connector.

After plugging in the cord, you turn on the printer's power switch, when you hear the sound of the machine running, it is successfully turned on.



After plugging in and connecting the printer, you need to put print media into the paper tray. The paper tray position will be on the front of the printer.

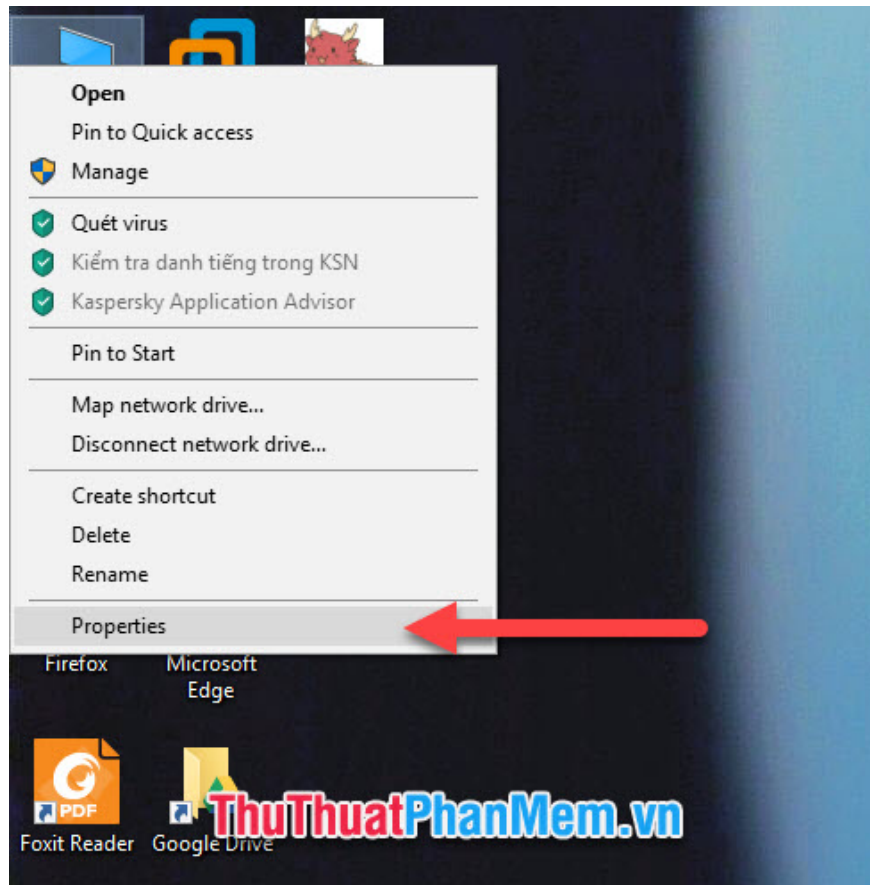
Open the paper tray and put the print paper into it. Normally, the size of the print paper tray will fit into A4 paper size, when you put the print paper, you should pay attention to the top of the paper that is put inside and put upside down.



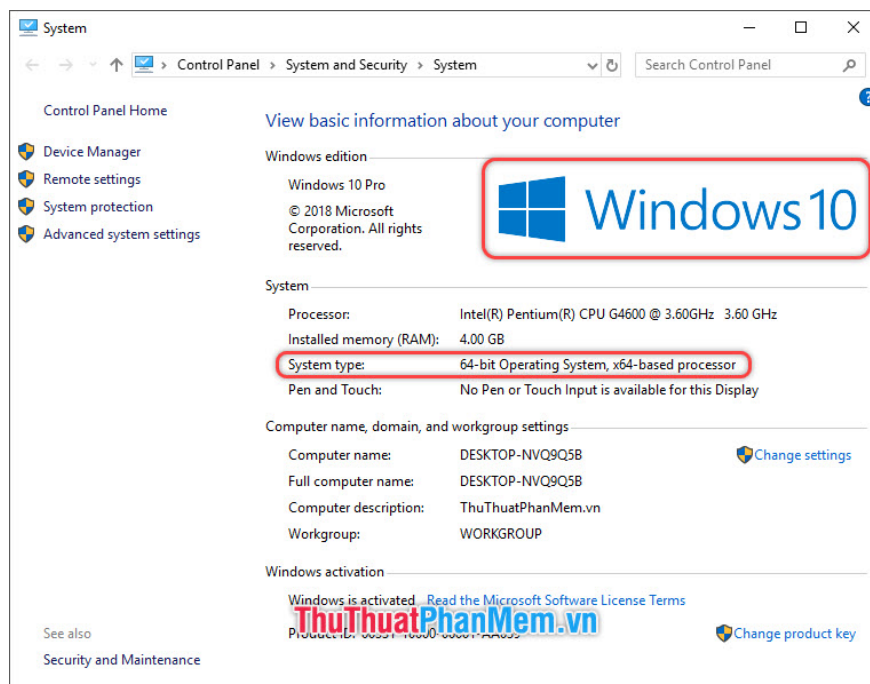
After all the hardware setup, you install the drive so you can control the use of the printer on your computer.

First, you need to check your computer's operating system to see what operating system you use.

Right-click on **This PC** and select **Properties** .



Then the System window will appear telling you which operating system your computer is used for and what configuration and system level is how many bits.



As shown in the picture above, we can see that TipsMake.com's computer is a 64-bit Windows 10 operating system.

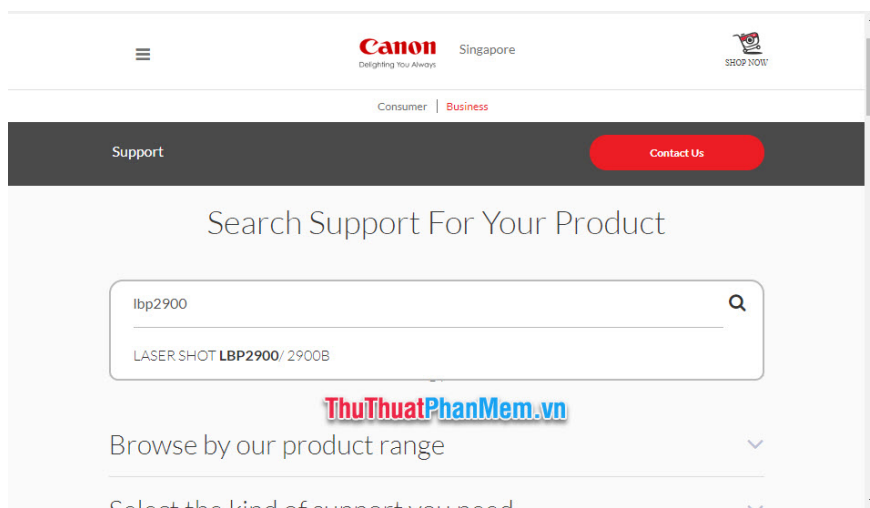
Next you check the name of your printer type is. The name of the printer line will be printed on the body or label.



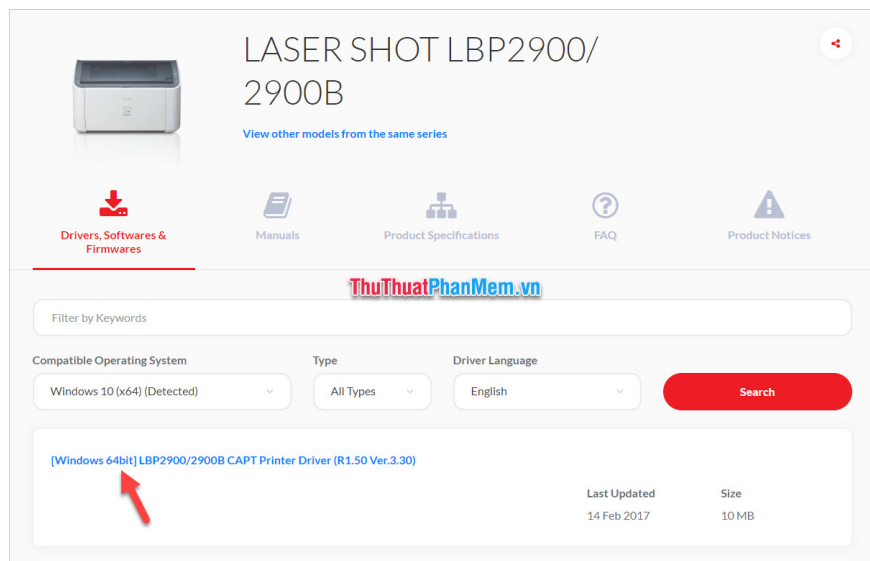
Once you know the operating system and name of the printer, go to the Canon main page to search for the right driver for your printer. You can access it by following the link:

Download the Canon printer driver

After accessing the link, you search for the driver based on the printer's name.



After searching you click on the correct line name printer that canon provides drivers.



After clicking on the link above, you will encounter an interface like the image below:



It contains the first line of information about the driver file you are about to download including the operating system name, printer type and driver version number.

Below is the date of the driver's last update date from the manufacturer.

Next you download the driver and install it on your computer.

[Windows 64bit] LBP2900/2900B CAPT Printer Driver (R1.50 Ver.3.30)

Last Updated : 14-Feb-2017

Issue Number : 0100278201



Download Now

I have read and understood the disclaimer below
and wish to download the designated software

OS

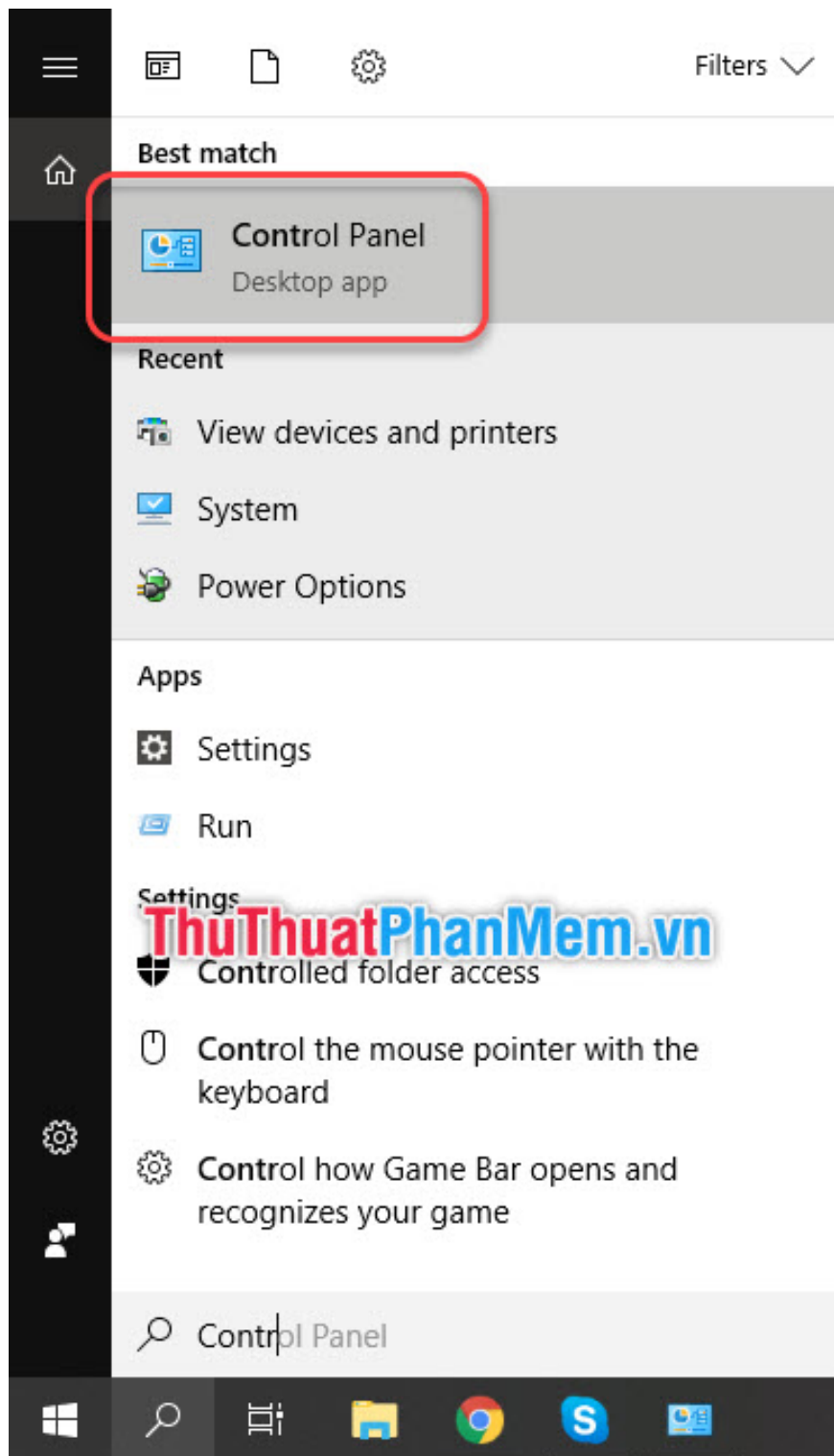
ThuThuatPhanMem.vn

- Windows 10 (x64)
- Windows 8.1 (x64)
- Windows 8 (x64)
- Windows 7 (x64)
- Windows Vista (x64)
- Windows XP (x64)
- Windows Server 2003 (x64)
- Windows Server 2003 R2 (x64)
- Windows Server 2008 (x64)
- Windows Server 2008 R2 (x64)
- Windows Server 2012 (x64)
- windows Server 2012 R2 (x64)

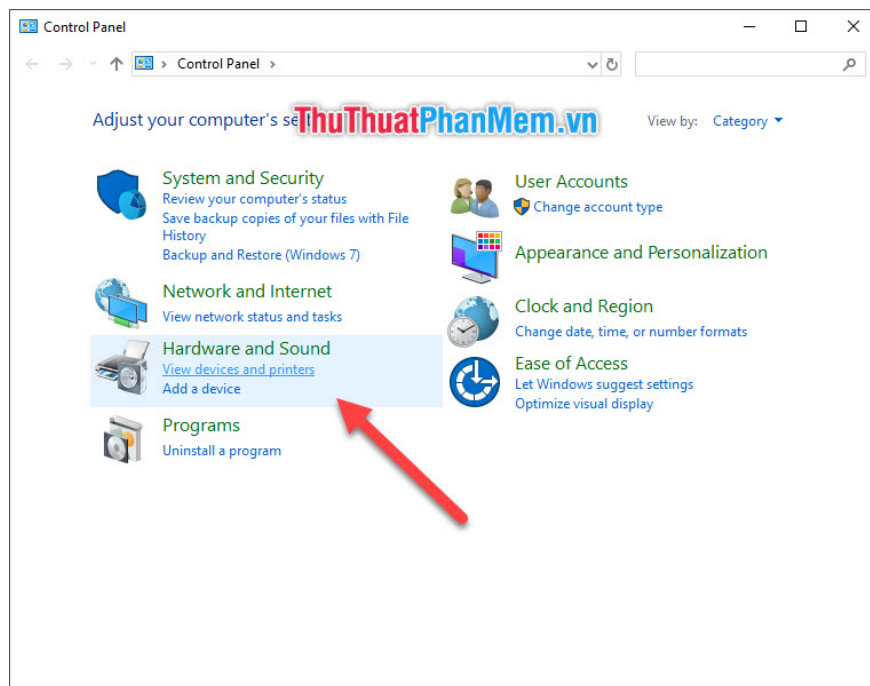


LBP2900_R150_V3...exe
8.0/10.9 MB, Còn 2 giây

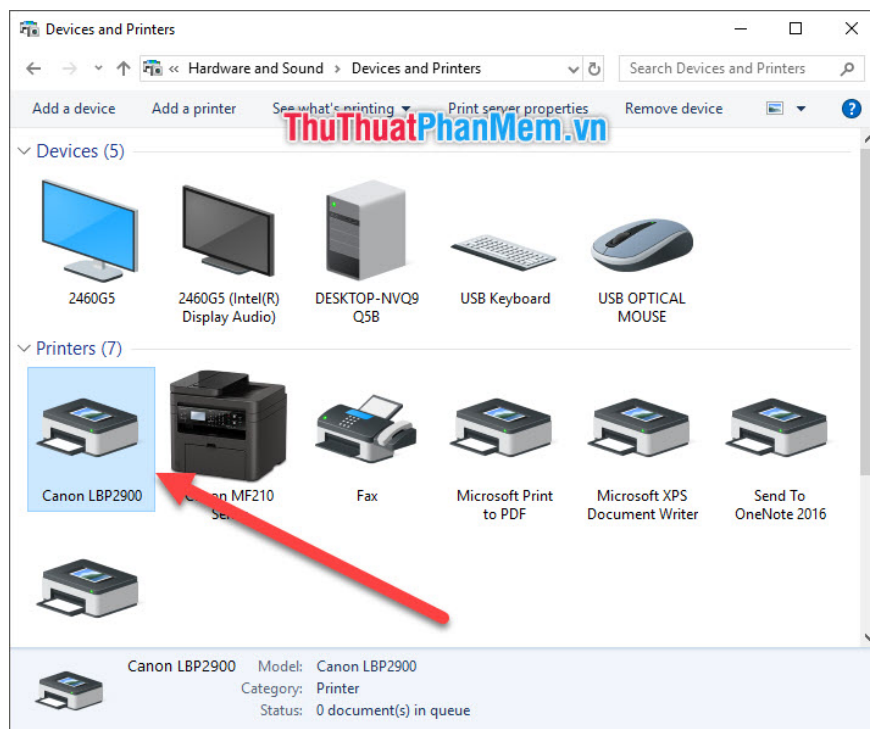
After installing you check again to see if the driver has been completely installed on your computer yet. To do this you need to open the **Control Panel** .



In **Control Panel** , access the **View devices and printers** folder .

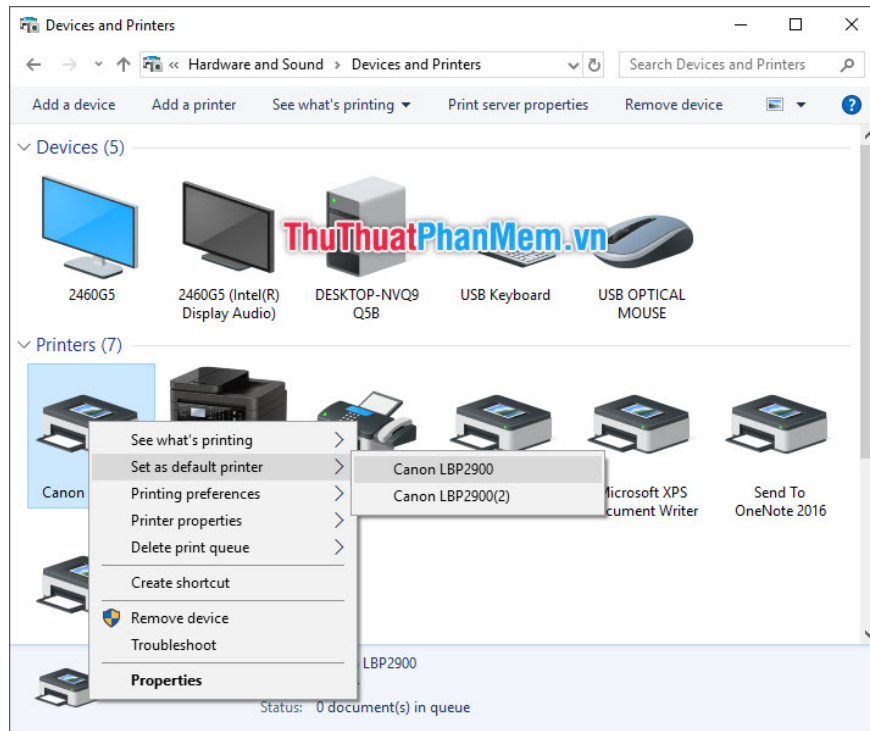


If you see the driver name in the Printers section, it means that the installation was successful.



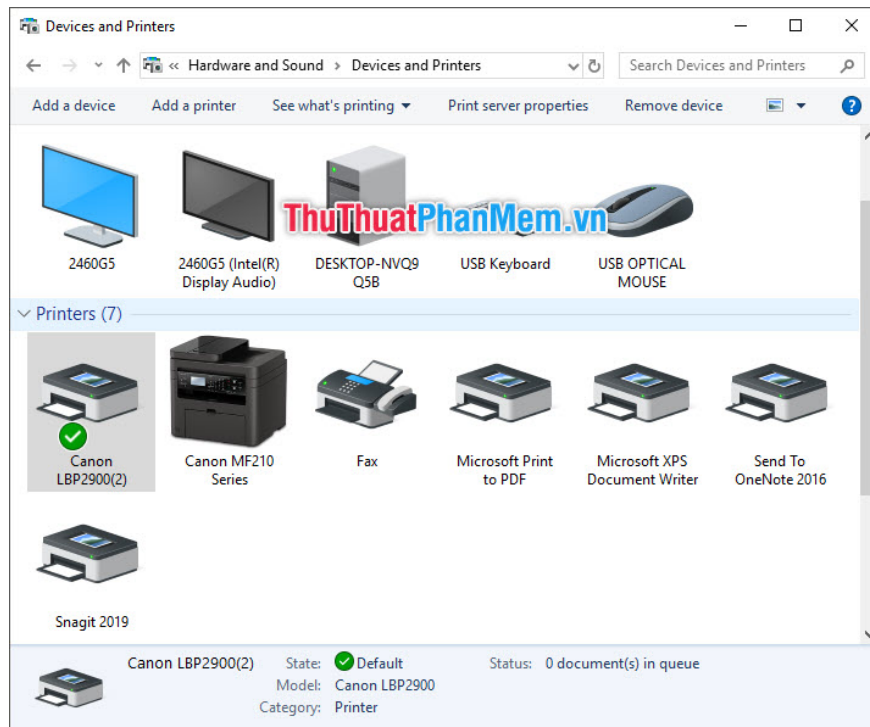
Default settings for your printer by right clicking on the printer icon.

Select **Set as default printer** and then select the **printer** driver driver software name.



The default printer will appear a blue V in the icon.

The default printer will be the first option that always appears when you want to print text.



2. How to print text

The keyboard shortcut for printing text that is default on most computer software is Ctrl P.

When you use this key combination, you can open the printing interface at the software you are using. For example, you want to print Word documents, you use Ctrl P to begin in print mode **Print** .

The **Print** interface of Word will appear. There are 5 steps you need to note:

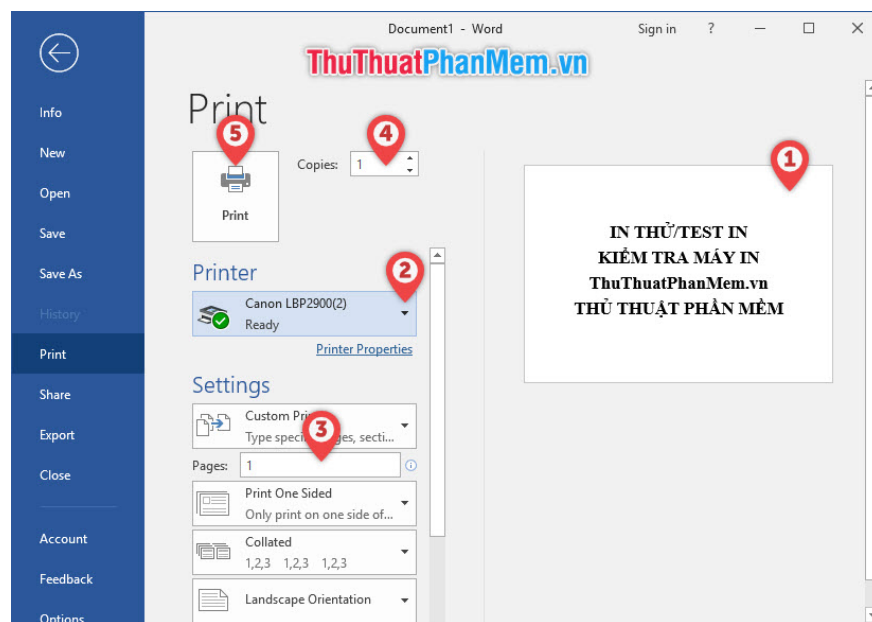
Step 1: Check that your printed page (document) is satisfactory (align the margins, font, position of the text compared to the whole page).

Step 2: See if the connected printer is the printer you want to test (if you set the printer by default, it will automatically be selected).

Step 3: Enter the number of pages to print. If you want to print only a test page, you should print only one page (for multi-page documents), number the page you want to print here. If the text has only one page, you can skip this step.

Step 4: Total prints. Leave it as 1 if you want to print only one copy.

Step 5: Click the **Print** icon to start printing jobs.



Printing will take a few seconds, and you will receive your test print result:



Similarly, when printing on a web browser, you also use the Ctrl P key combination to enter the printing interface and set the related options and then click **Print** to print.



You finished reading the article "**How to use Canon printers for new users**" edited by the [TipsMake](#) team. We hope this article has provided you with many useful tech tips and tricks. You can search for similar articles on tips and guides. Thank you for reading and for following us regularly.