

# How to use BitLocker to encrypt data on Windows 8

Microsoft provides users with a BitLocker encryption tool to ensure user data is protected at the highest level. If you have some important data to store in your computer hard drive or USB flash drive, you can use the BitLocker encryption tool.

Microsoft provides users with a BitLocker encryption tool to ensure user data is protected at the highest level. If you have some important data to store in your computer hard drive or USB flash drive, you can use the BitLocker encryption tool.

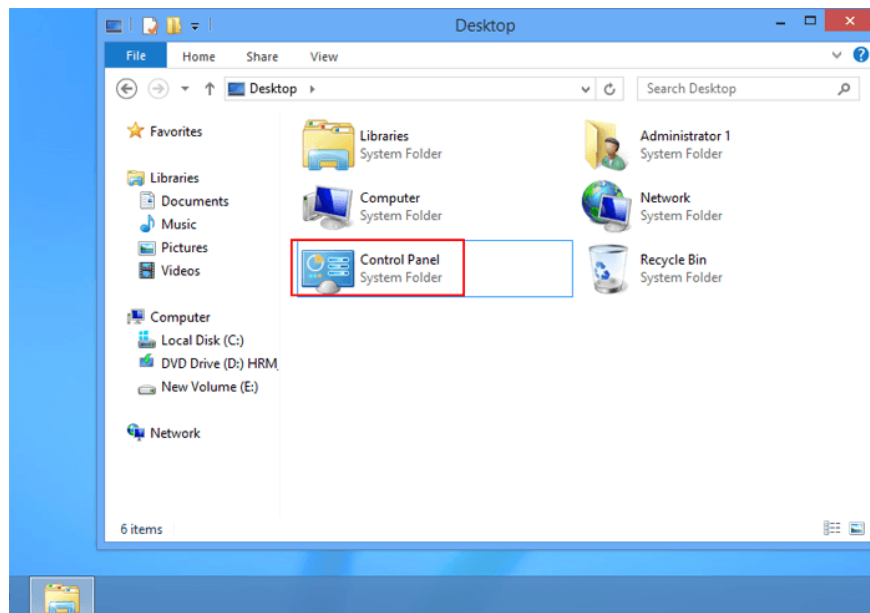
In the article below, Network Administrator will show you how to enable BitLocker on Windows 8.

## Steps to enable BitLocker on Windows 8:

Note: In this tutorial, enable BitLocker for C drive

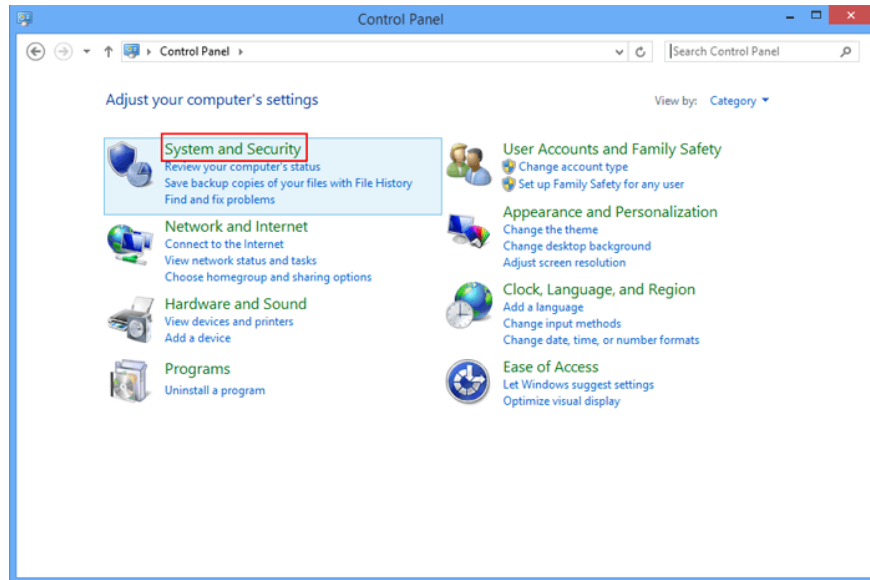
### Step 1:

Open Control Panel.



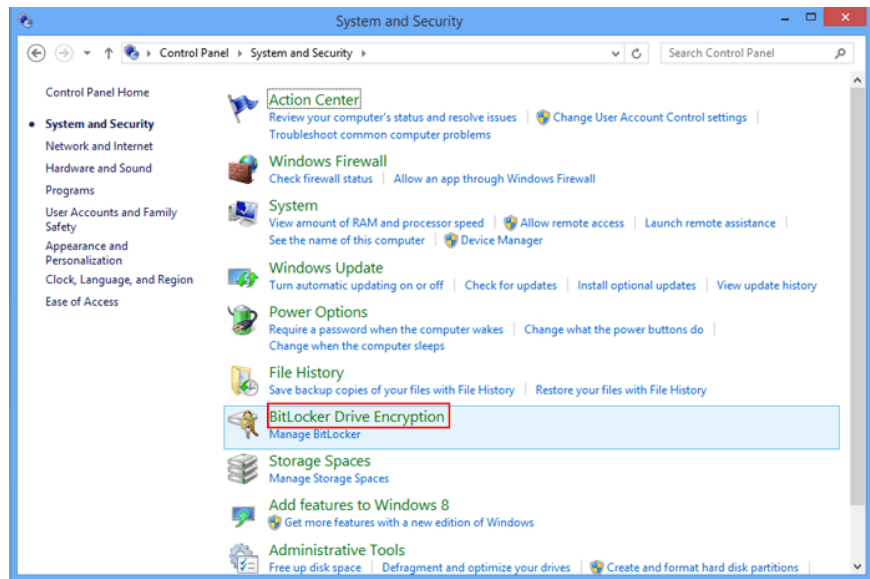
### Step 2:

On the Control Panel interface, click **System and Security**.



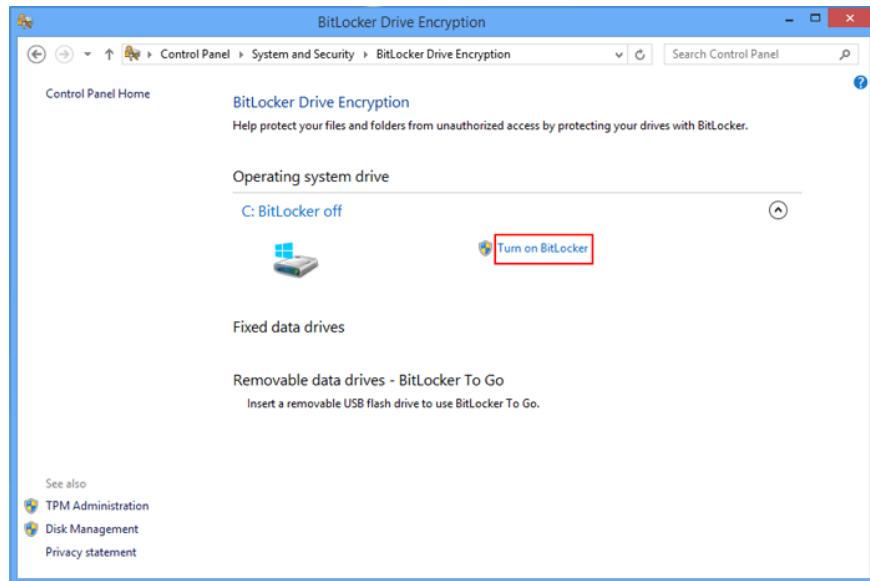
### Step 3:

Select the **BitLocker Drive Encryption** option in the list of right frame options.

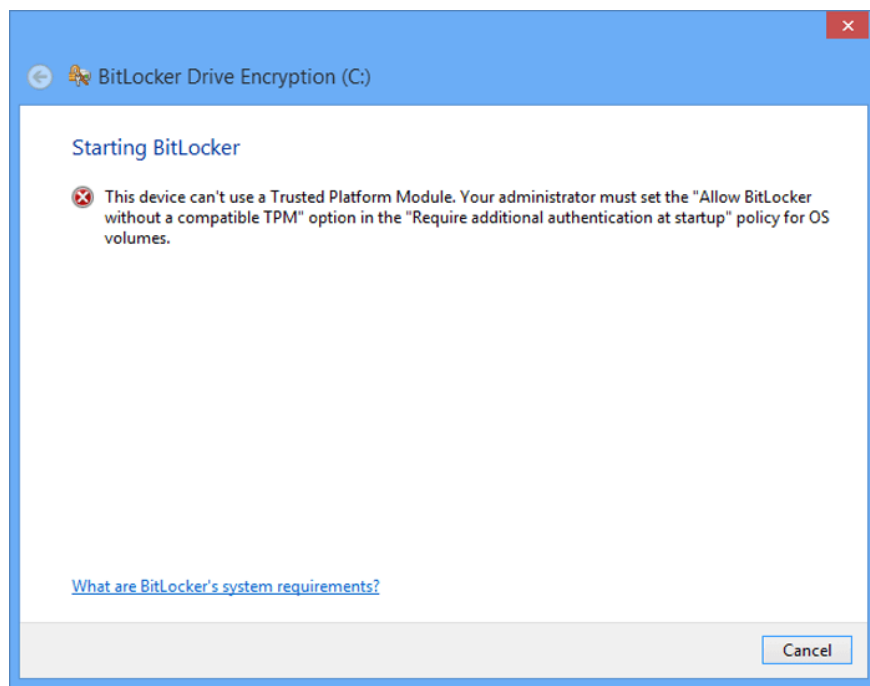


### Step 4:

Select **Turn on BitLocker** next to the C drive.



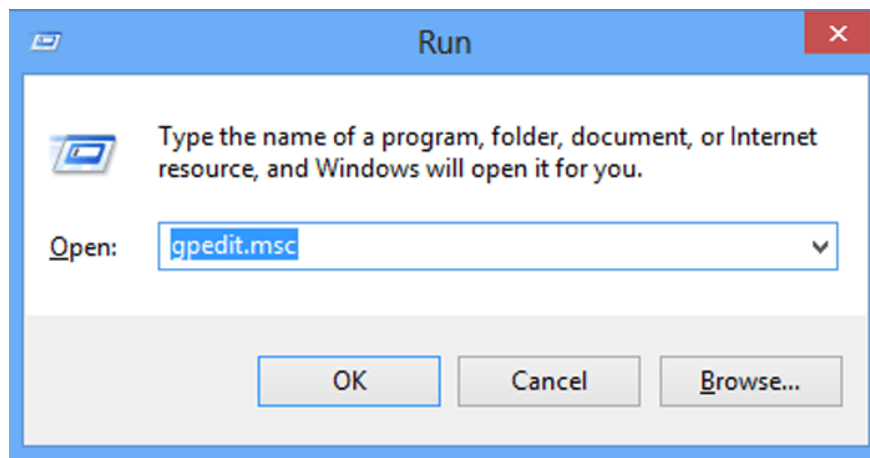
If the error message dialog box appears, as shown below, it means that you cannot open BitLocker.



To fix this error, refer to the steps below:

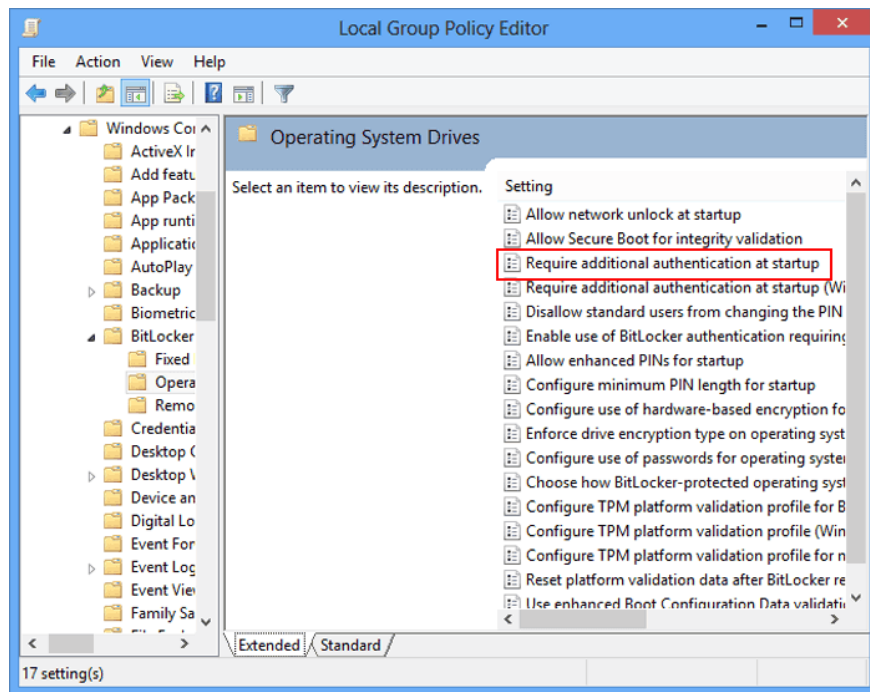
1. Press the **Windows + R** key combination to open the Run command window.
2. On the Run command window, type the following command and then click **OK** to open Local Group Policy Editor:

**gpedit.msc**

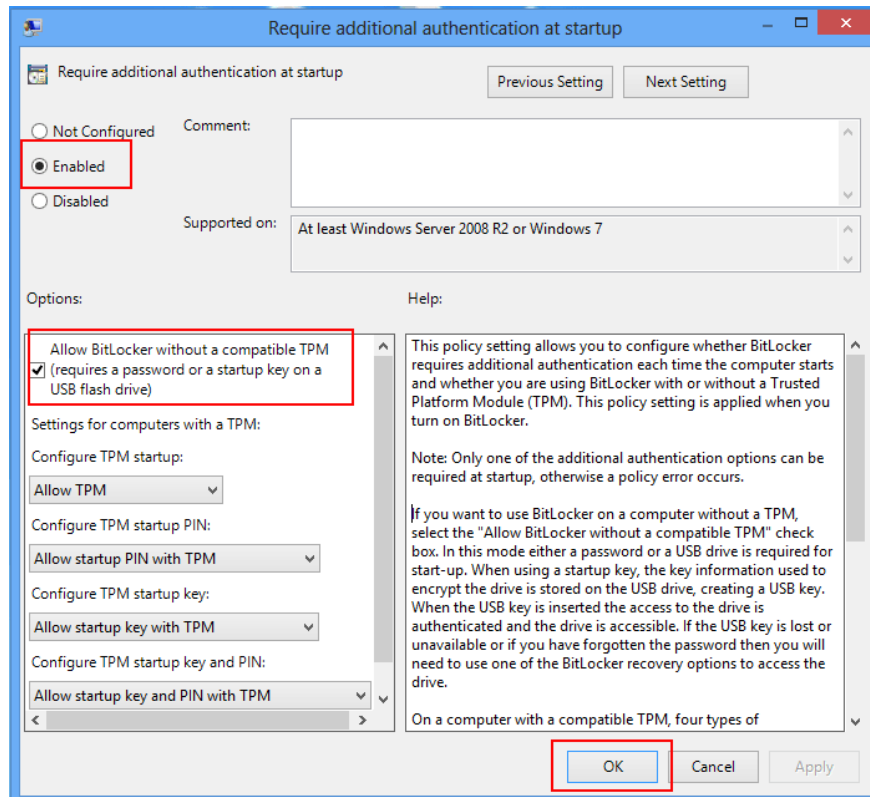


3. In the Local Group Policy Editor window, navigate to the following path to find and double-click the **Require additional authentication at startup option**:

**Local Computer Policy / Computer Configuration / Administrative Templates / Windows Components / Bit Locker Drive Encryption / Operating System Drives / Require additional authentication at startup**



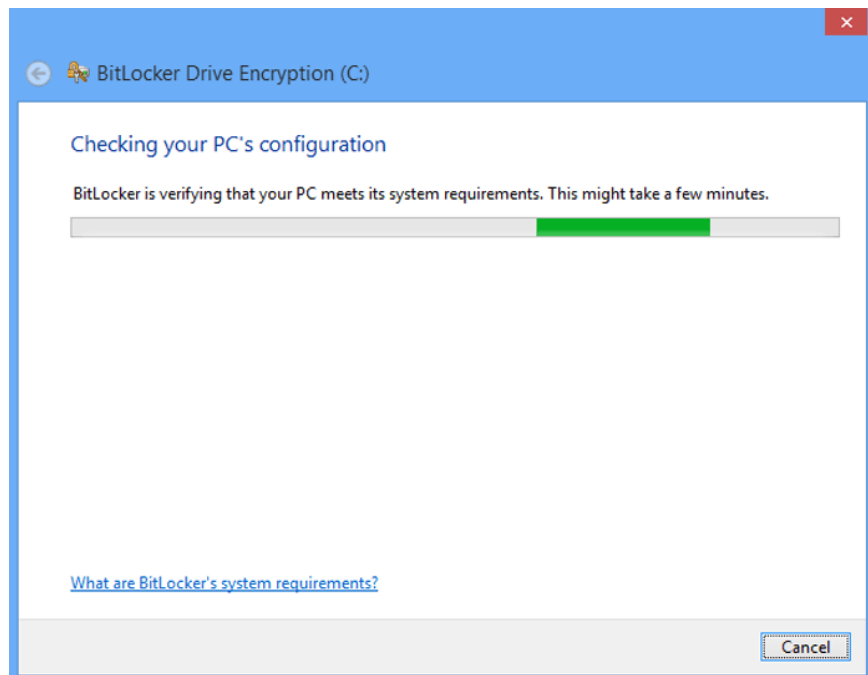
4 On the Require additional authentication at startup window , in the left pane, select **Enable**.



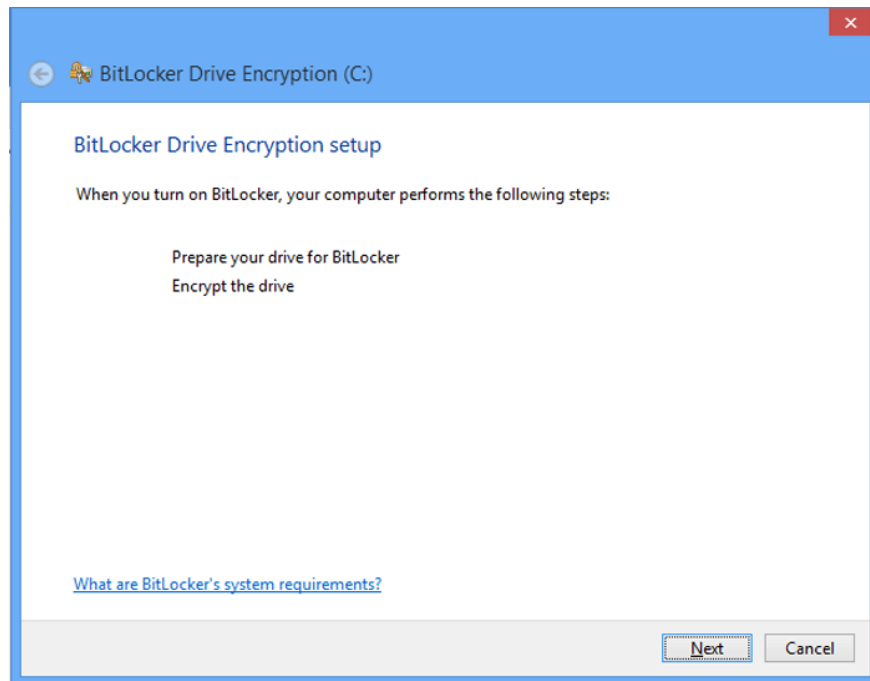
Now the Allow BitLocker option without a compatible TPM is automatically selected.

Next, click **OK** to save the changes and close Local Group Policy Editor.

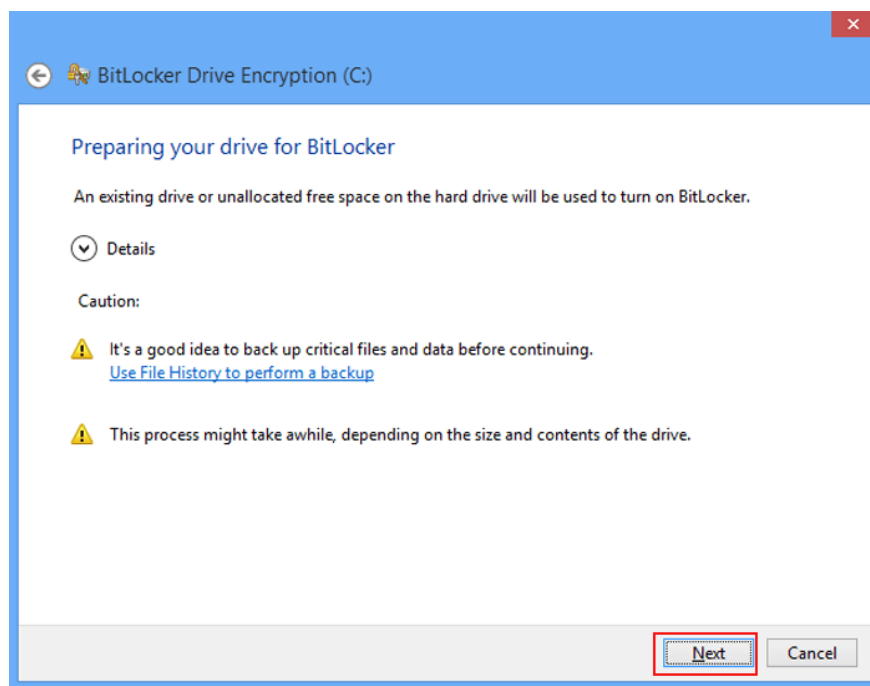
5. Click **Turn on BitLocker** again and wait for BitLocker to check your computer configuration.



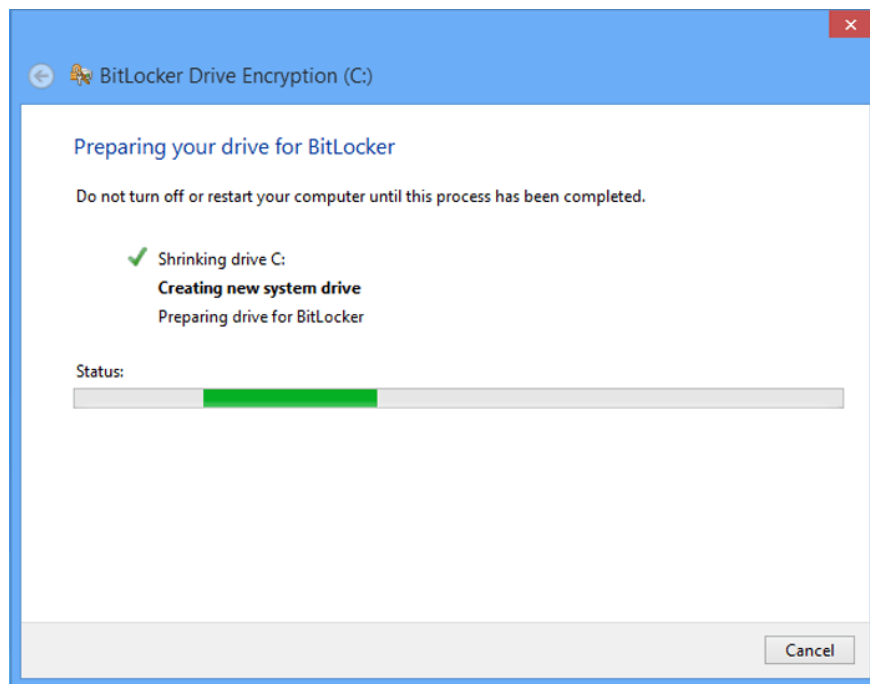
6. On the next interface, click **Next**.



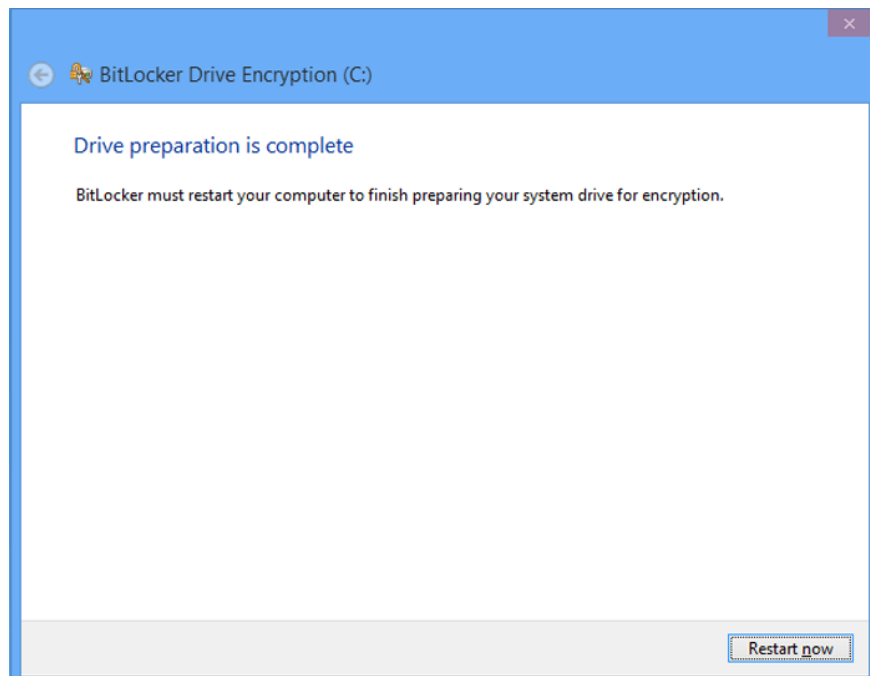
7. Next select **Next** .



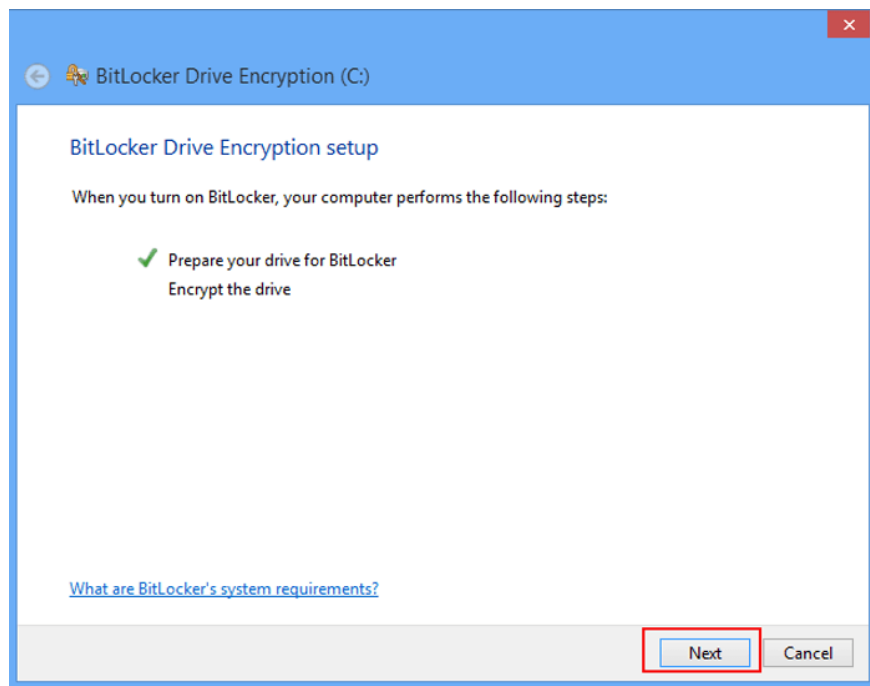
8. Wait for the program to prepare BitLocker for the drive.



9. Click **Restart now** to finish the process of preparing the system drive encryption.

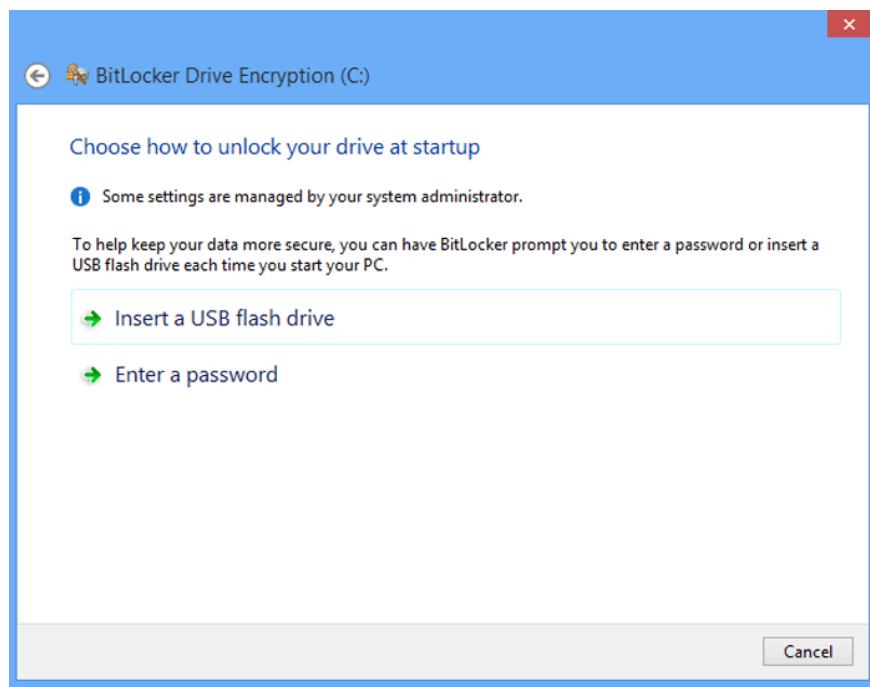


10. After starting, click **Next** to encrypt the drive.

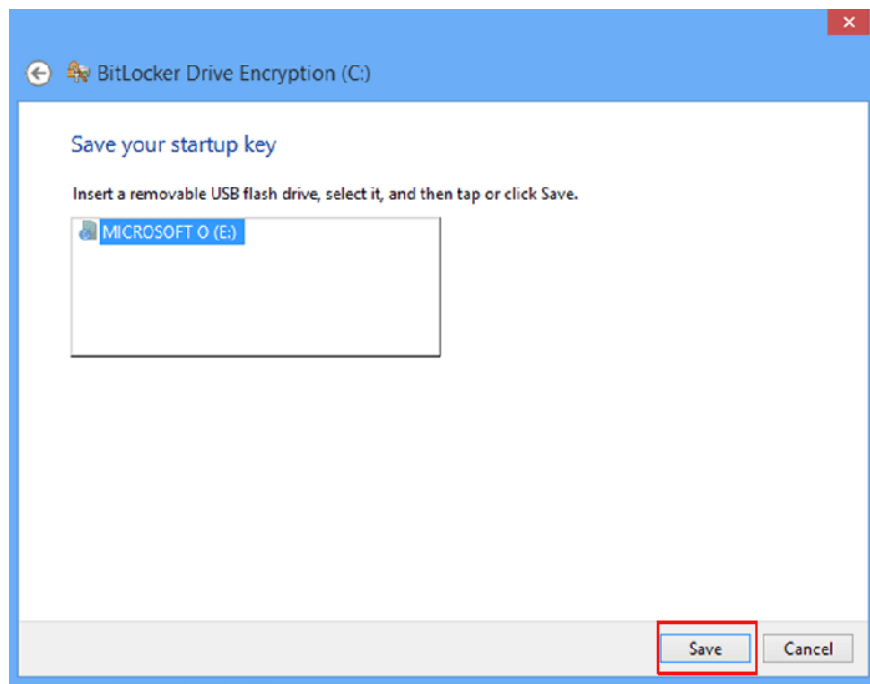


## Step 5:

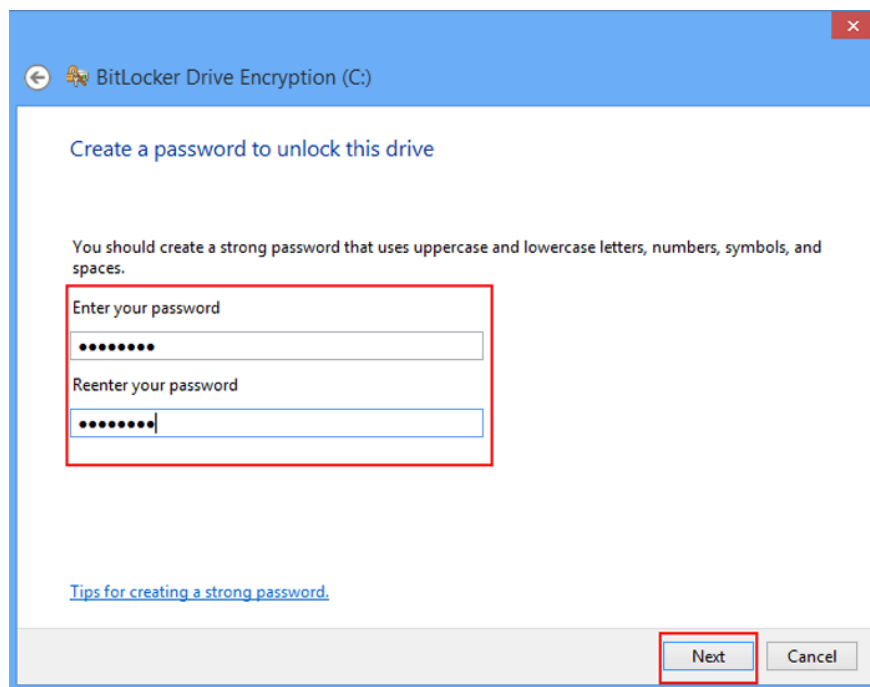
Select **Enter a password** or **Insert a USB flash drive** to unlock the drive.



1. If you select **Insert a USB flash drive**, you must insert a USB drive into the computer, then select the USB drive and click **Save**.

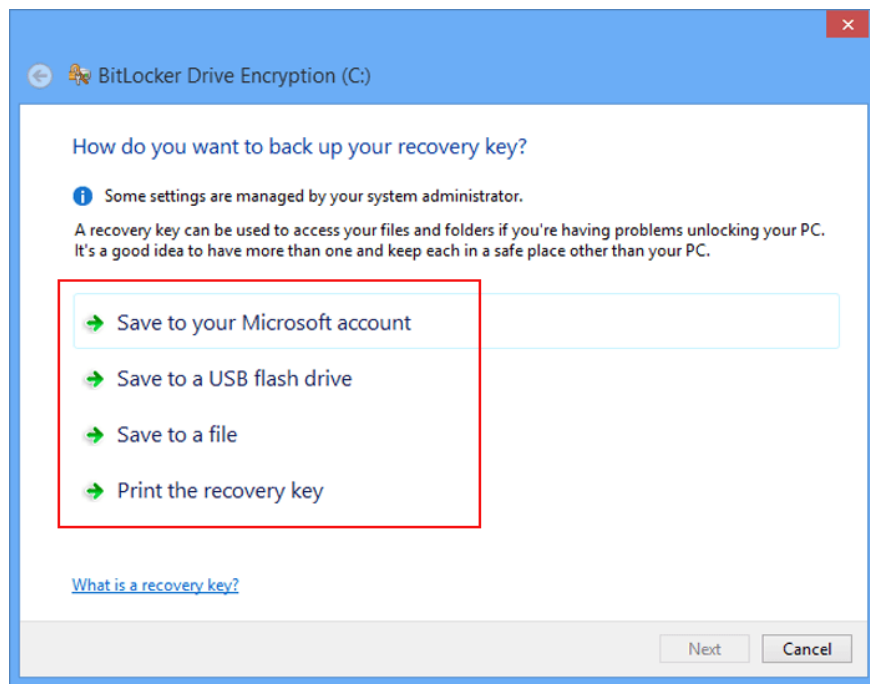


2. If you select **Enter a password** , enter the 8-character password or more in the Enter your password box, then re-enter the password in the Reenter your password box and then click **Next** to continue.



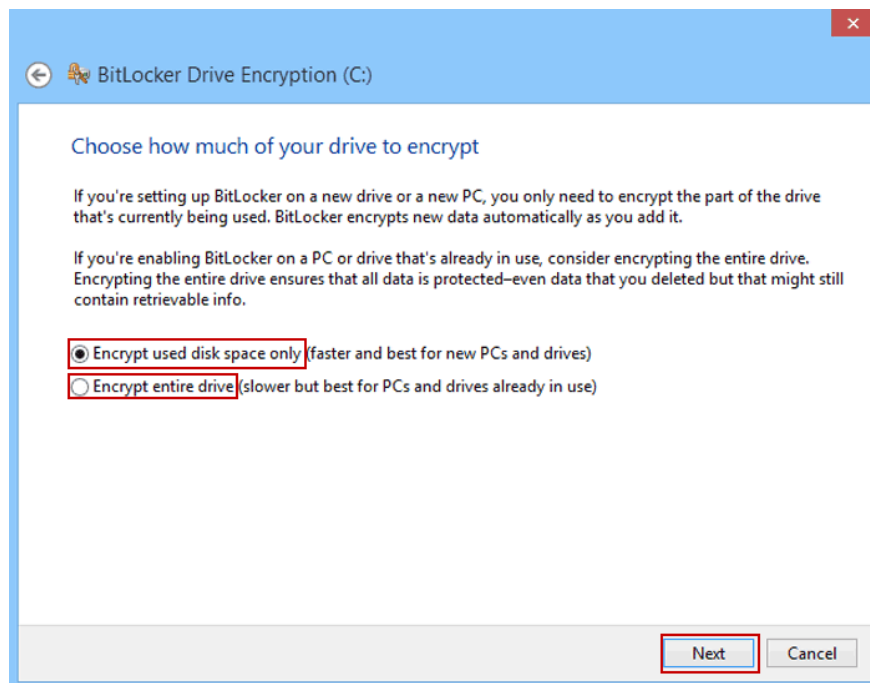
## Step 6:

Select one of the options **Save to your Microsoft account**, **Save to a flash drive USB**, **Save to a file** and **Print the recovery key** to save Recovery key. After selecting, click **Next** .



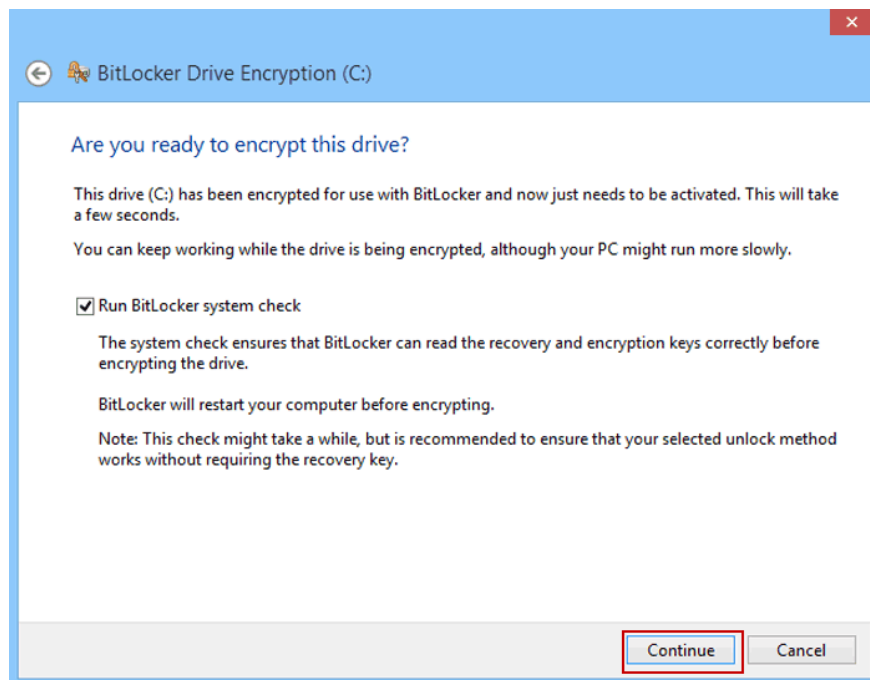
## Step 7:

Select **Encrypt used disk space only** or **Encrypt entire drive**, then click **Next**.



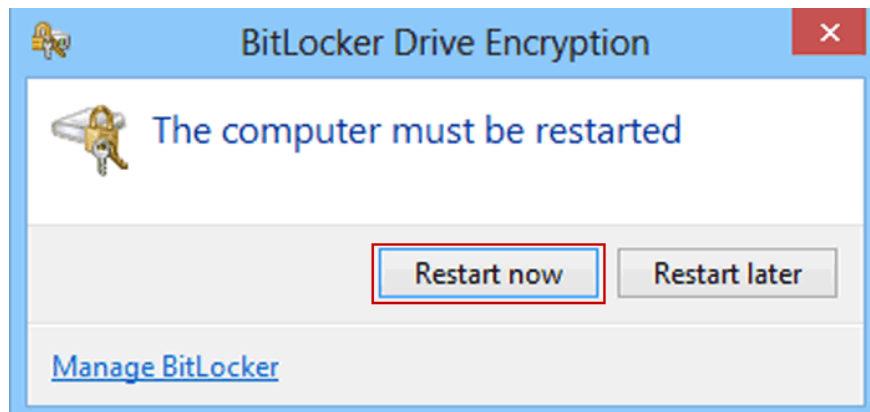
## Step 8:

Select **Continue** to encrypt the drive.

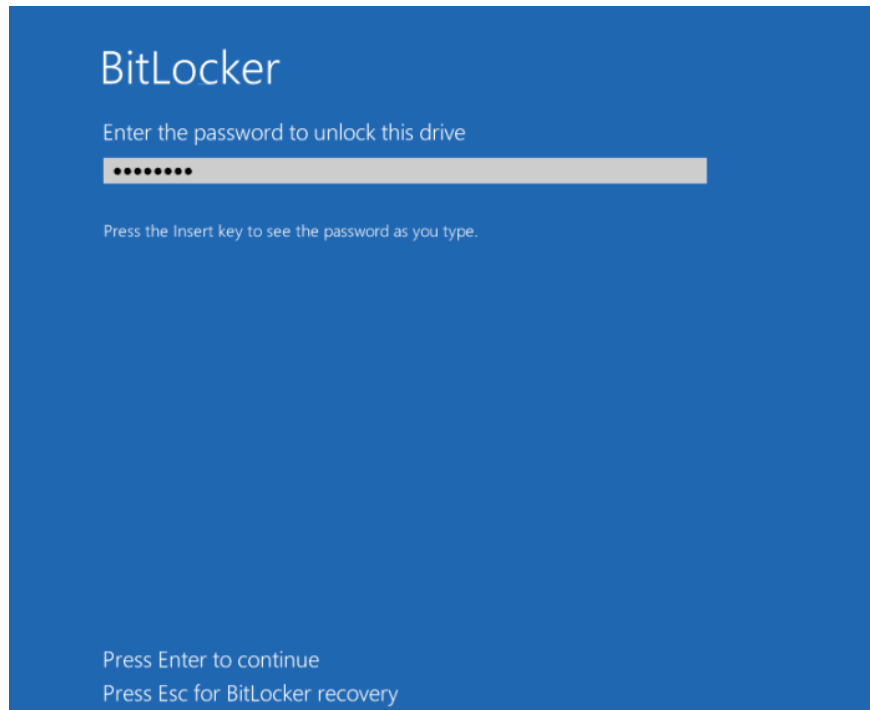


## Step 9:

Select **Restart now** to restart your computer.



From now on you will be asked to enter the password to unlock the encrypted system drive.



### **Refer to some of the following articles:**

1. Instructions for encrypting USB or memory cards with Bitlocker on Windows 10
1. How to use Bitlocker to encrypt data on Windows 10 (Part 1)
1. How to use Bitlocker to encrypt data on Windows 10 (The last part)

### **Good luck!**

You finished reading the article "**How to use BitLocker to encrypt data on Windows 8**" edited by the [TipsMake](#) team. We hope this article has provided you with many useful tech tips and tricks. You can search for similar articles on tips and guides. Thank you for reading and for following us regularly.