

How to use Bitlocker to encrypt data on Windows 10 (The last part)

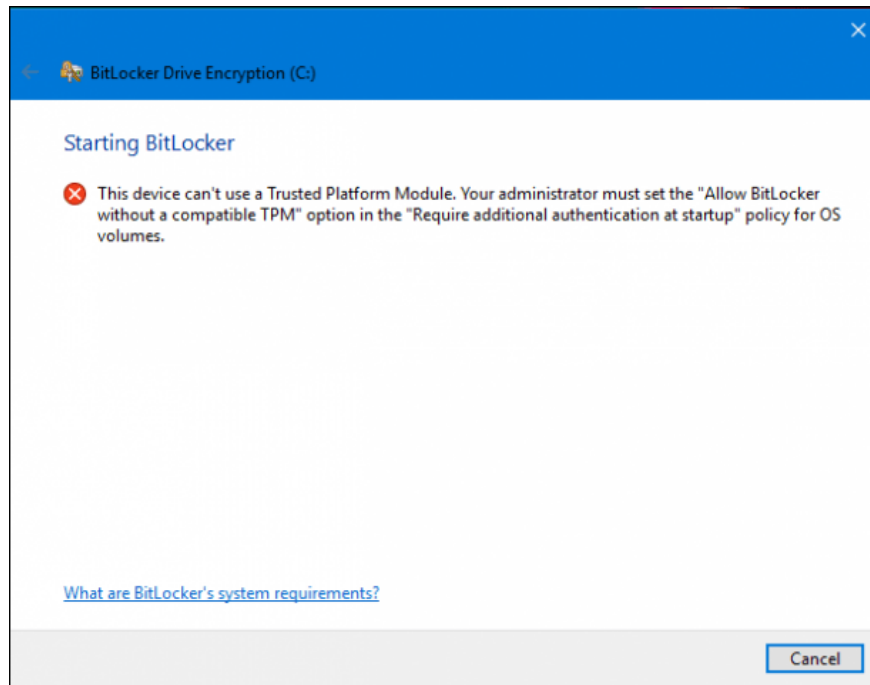
If you get an error message after setting up BitLocker, this means that your computer does not support the Trusted Platform Module chip (1.2). How to fix this error.

To avoid exposing important data or to prevent others from unauthorized use of your data, you can encrypt data using **BitLocker** . In Part 1, Network Administrator introduced and showed you how to encrypt data on **Windows 10** using **BitLocker** . In the next section, Network Administrator will show you how to fix **BitLocker** setup error.

Explore more:

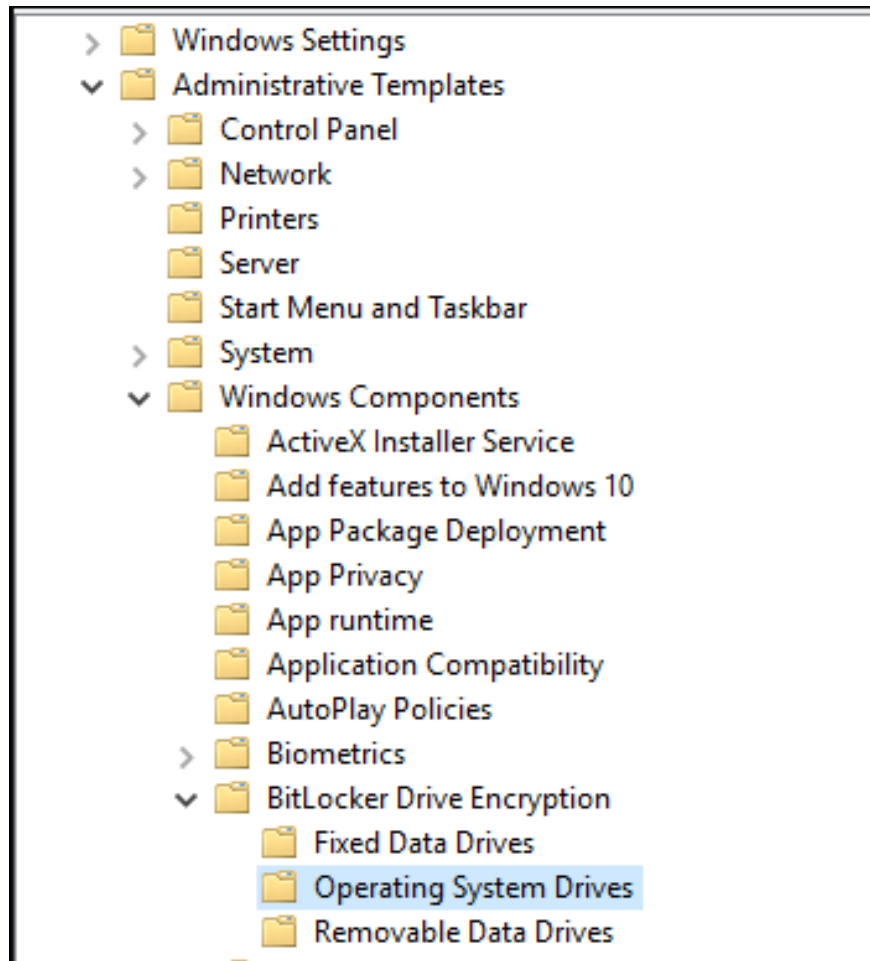
1. **How to use Bitlocker to encrypt data on Windows 10 (Part 1)**
2. **How to configure BitLocker (Part 2)**
3. **Use BitLocker to encrypt external storage drives - Part 1**

If, after setting up BitLocker, you receive an error message on the screen, which means that your computer is not supported with **the Trusted Platform Module chip (1.2)** .

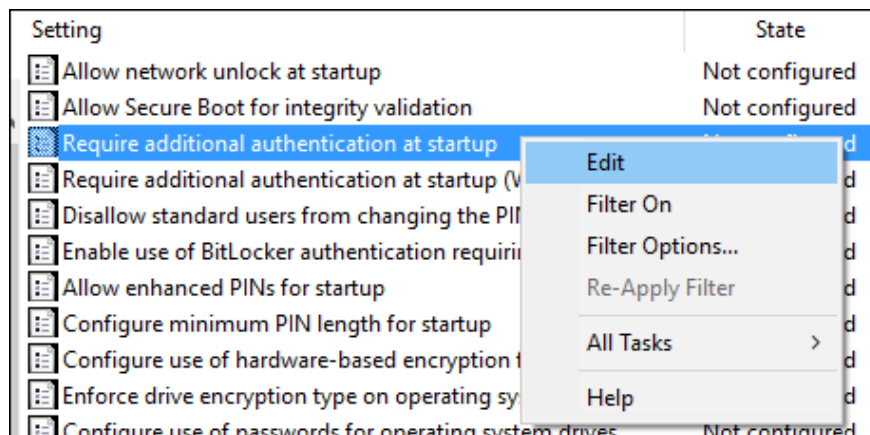


However, you can still set up BitLocker if it fails by opening **Group Policy** . Press **Windows + R** key combination then type: **gpedit.msc** and press **Enter** .

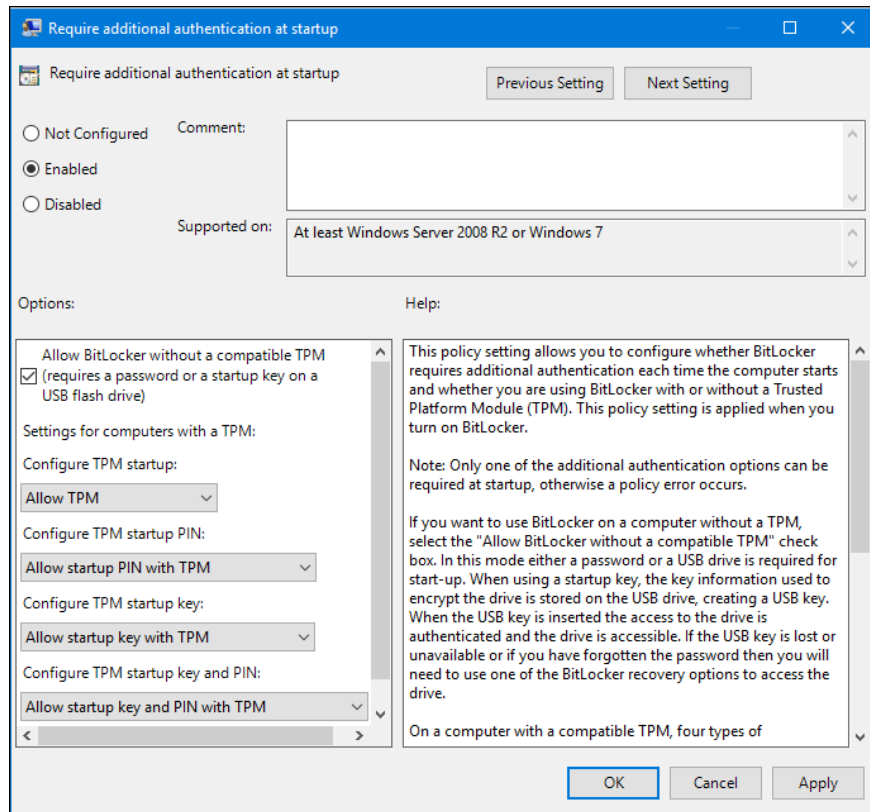
Open **Administrative Templates** then select **Windows Component** , choose **Bitlocker Drive Encryption** , click on **Operating System Drives** .



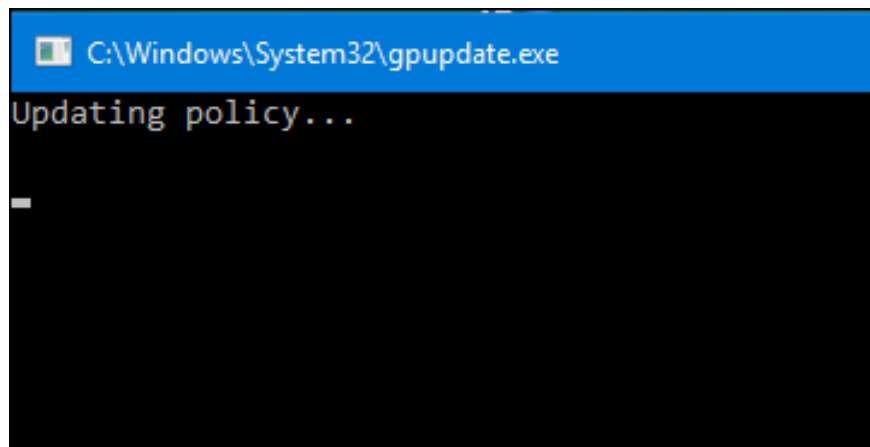
Right-click on the **Require additional authentication at startup** item and then select **Edit**.



Select **Enabled**, then check the box marked **Allow BitLocker without compatible TPM** in the Options section.



Confirm changes



Click **Start** then enter: **gpforce.exe / update** to ensure the changes are applied . After you finish the command, you should restart your computer.

Advice:

1. For those who work in an environment with sensitive, important data . BitLocker should be used.
1. You should invest in a dedicated **USB flash drive** to store **Recovery Key** . in case you lose the key.

1. In addition, make sure you create a thorough backup before starting the encryption process.

You can also encrypt data on Windows 10 with **USB Flash** and **SD** drive.

Good luck!

You finished reading the article "**How to use Bitlocker to encrypt data on Windows 10 (The last part)**" edited by the [TipsMake](#) team. We hope this article has provided you with many useful tech tips and tricks. You can search for similar articles on tips and guides. Thank you for reading and for following us regularly.