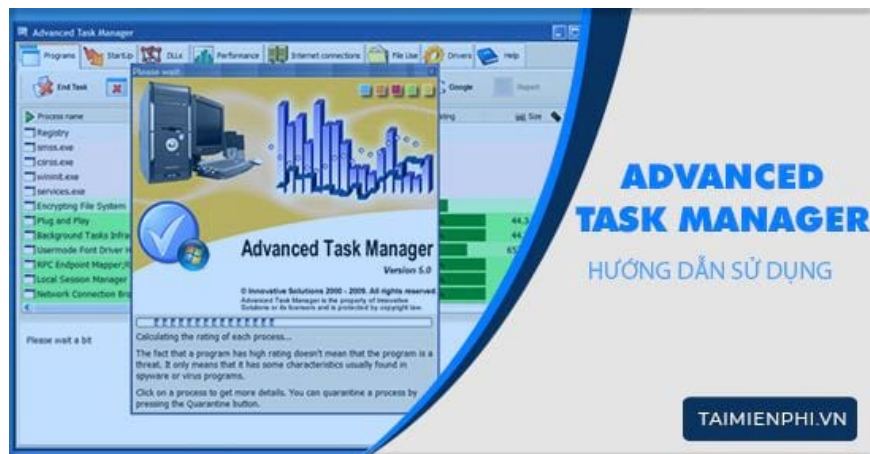


How to use Advanced Task Manager to manage programs running on your computer.

Utilizing Advanced Task Manager will help users easily observe and gain a deeper understanding of the components and tasks running on their computer, thereby enabling them to find the best methods or solutions to improve device performance.

Advanced Task Manager has similar functionality to Task Manager on Windows but is much more powerful. This tool supports managing, tracking, and evaluating work performance, and allows users to delve deeper into what is running in the background on their computer.



Instructions on using Advanced Task Manager on a computer

To learn more about the specific features and **usage of Advanced Task Manager**, let's explore the details below. But first, you need to download and install the latest version of Advanced Task Manager.

- Download Advanced Task Manager software here:

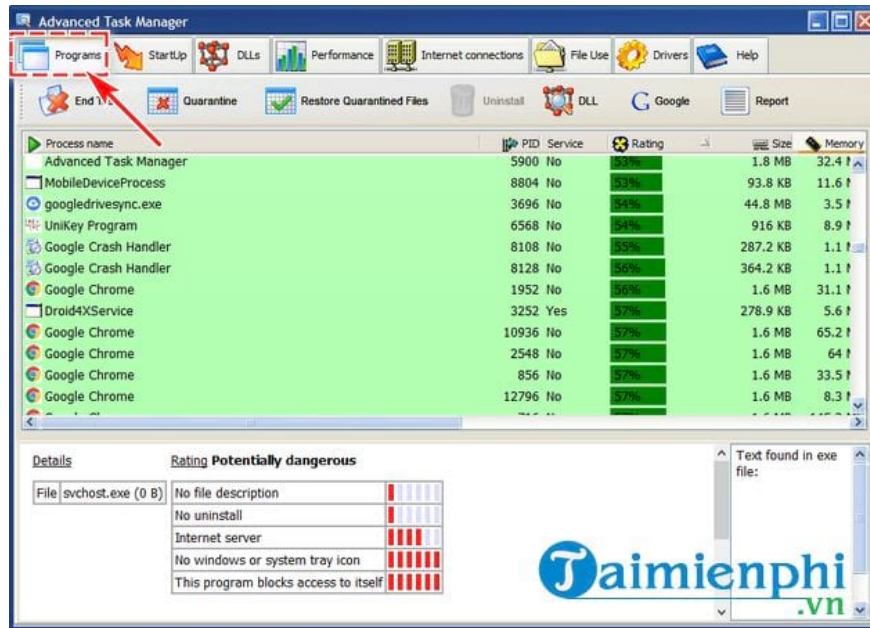
Advanced Task Manager presents its content in tabs, relatively similar to Windows Task Manager. Users will not need much time to get familiar with and use the software proficiently.

1. Program Card

The Program tab in Advanced Task Manager has similar functionality to Windows' Processes tab, but with more detail. The Program tab lists background programs and services, and the resources they are using.

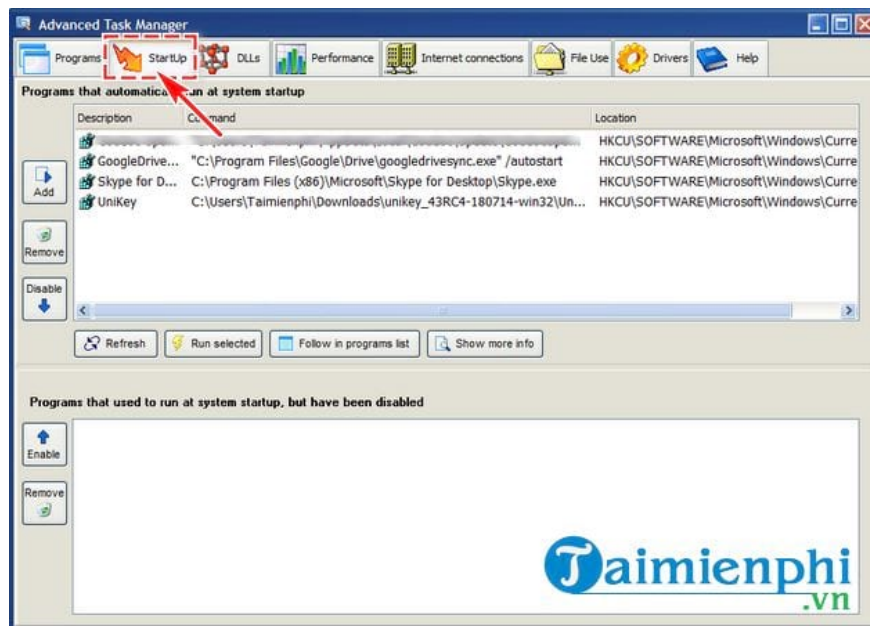
More notably, you can view the security rating and potential threats by clicking on each running task. If you have any doubts or want to terminate a task that is consuming resources or causing the computer to freeze,

simply select it and click **End task** .



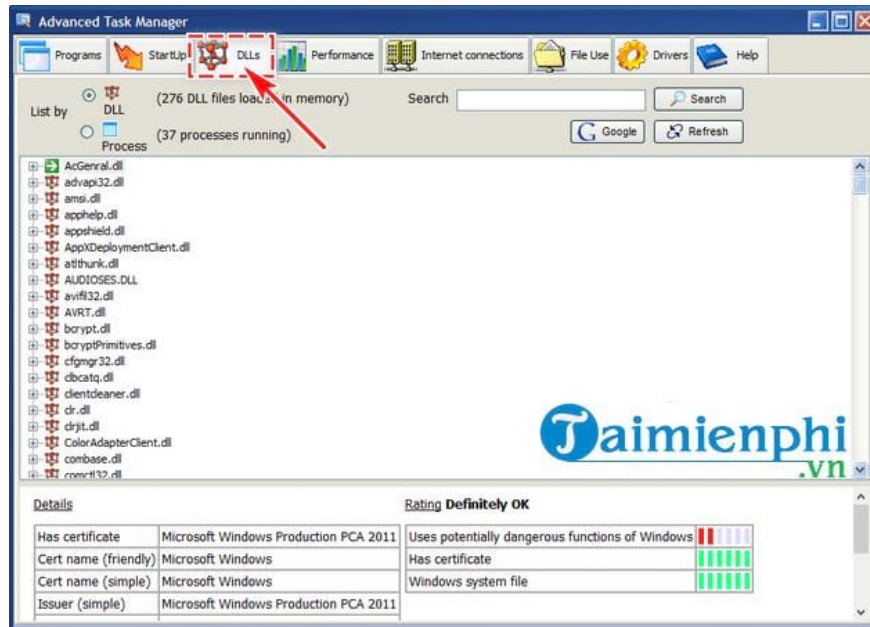
2. Startup Card

Users can use **the Startup tab** to manage the list of programs that will start with Windows. To speed up computer startup , you can choose to **Remove** or **Disable** programs. Conversely, you can also choose **Add** to add programs to the list to optimize computer performance.



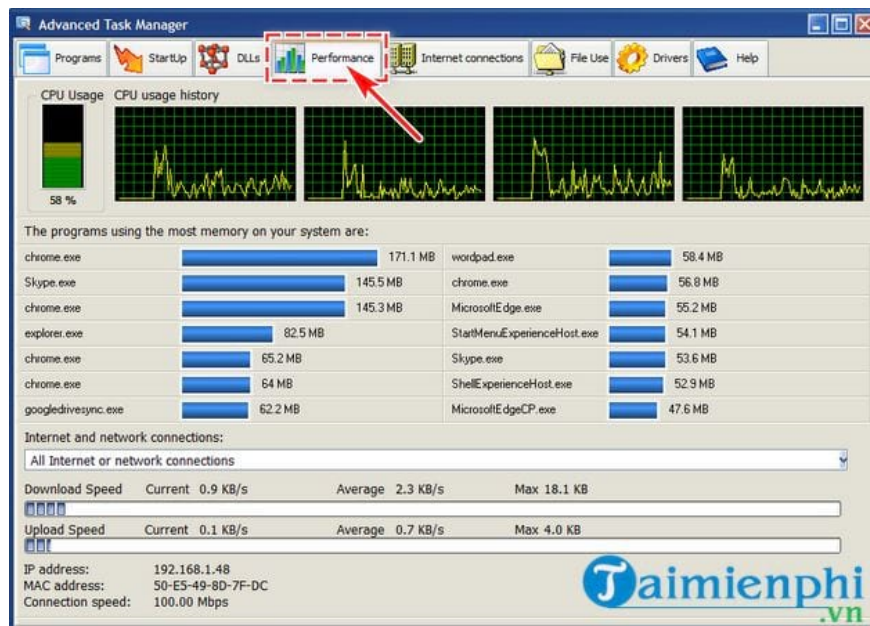
3. DLLs

As its name suggests, **the DLLs tab** lists files with the **.DLL** and **.EXE** extensions on your device. Simply tap on any file in the list, and you can see full information including its name, location, size, and version. This information is usually of more interest to tech professionals. If you're just a general user, you can ignore it.



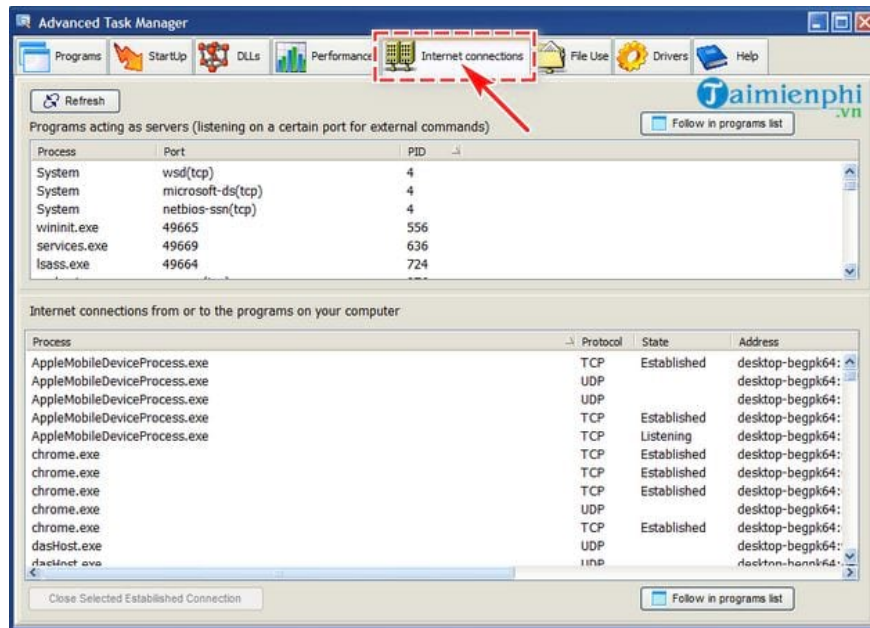
4. Performance Card

In Advanced Task Manager, **the Performance tab** functions as a health and performance monitoring tool for your computer's active tasks. Users can view CPU usage graphs, program memory consumption levels, and even measure network speed accurately in real-world conditions.



5. Internet Connections tab

With **the Internet Connections tab**, users can monitor more detailed information about background tasks connecting to and using the internet. Besides listing them, this tab also provides detailed information such as IP addresses and connection methods for easy tracking.



In this guide on how to **use Advanced Task Manager**, Taimienphi will only introduce the important tabs with functions that many users are interested in. To learn more about specialized tabs like **File User** or **Driver**, please install and try it out. Additionally, you can also refer to the guide **on using Task Manager** here.

You finished reading the article "**How to use Advanced Task Manager to manage programs running on your computer.**" edited by the [TipsMake](#) team. We hope this article has provided you with many useful tech tips and tricks. You can search for similar articles on tips and guides. Thank you for reading and for following us regularly.