

# How to use a Windows 10 PC as a WiFi extender

If you're currently looking for the fastest and most economical way to expand your wireless network, read the following article to learn how to use your Windows 10 computer as a dedicated WiFi extender.

WiFi extender is a specialized device or software that can repeat and extend wireless signals. Typically, WiFi extenders are needed in large spaces or buildings where even a dedicated router cannot cover the entire space.

If you're currently looking for the fastest and most economical way to expand your wireless network, read the following article to learn how to use your Windows 10 computer as a dedicated WiFi extender.

Of course, the fastest and cheapest solution is not always the best solution. Therefore, it is best to buy a repeater for about 1 million or choose a dedicated extender software with the same price.

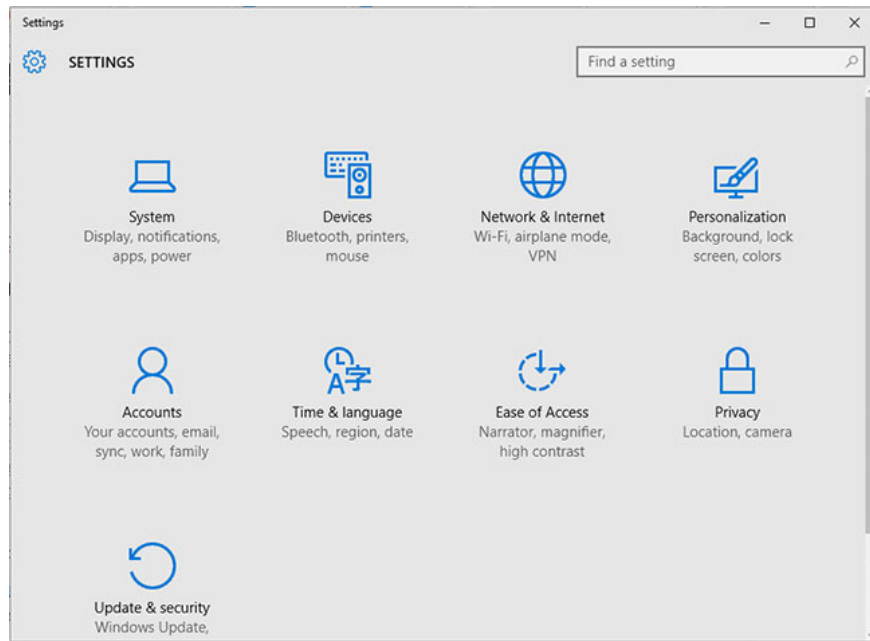
But, if you want a quick solution and don't have to pay anything, the integrated Windows 10 feature would be the perfect choice for you. However, unlike the paid options mentioned above, the Windows solution comes with a few drawbacks: This wireless repeater software will create a second hotspot that your device must connect to.

## Set up your Windows 10 PC to act as a WiFi extender

This is not really a classic WiFi extender because a new hotspot network will be created - this network will be different from the real WiFi network provided by your router. The new wireless access point has its own name and passphrase.

Creating a separate wireless hotspot in Windows 10 to extend wireless signals is easy. All you have to do is:

1. Press hotkey **Win+ I** to open Settings.
2. From **System Settings** , click **Network & Internet** .



Click on Network & Internet

3. In the next window, from the left panel, select **Mobile hotspot**.

4. Turn on the **Share my Internet connection with other devices** option .

5. After that, click **Edit** , then name and new network password.

6. Save the changes.

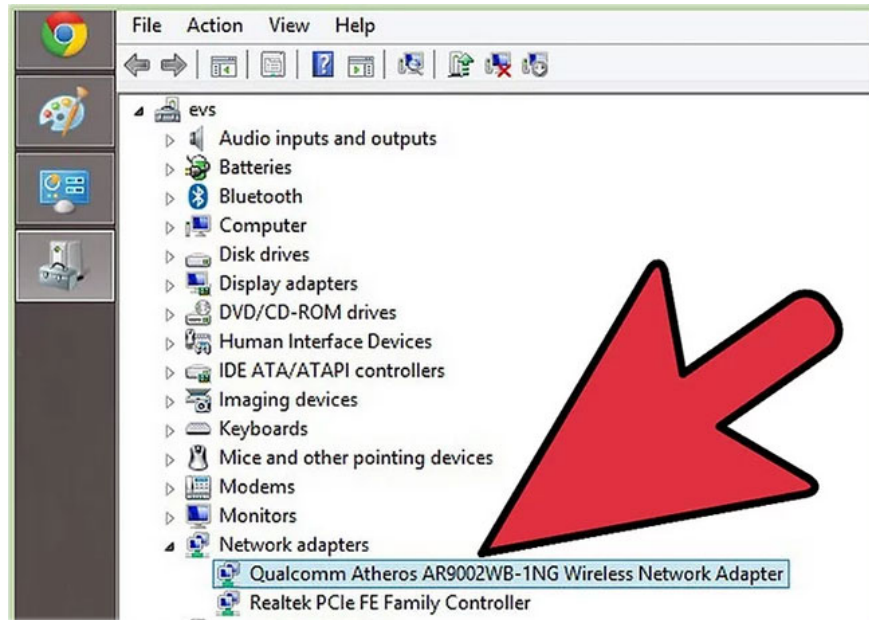
## Use MyPublicWifi

Follow these steps to set your computer as a WiFi extender with MyPublicWifi:

1. [Download and install MyPublicWiFi](#).

**Note:** You will have to restart the computer after the installation is completed.

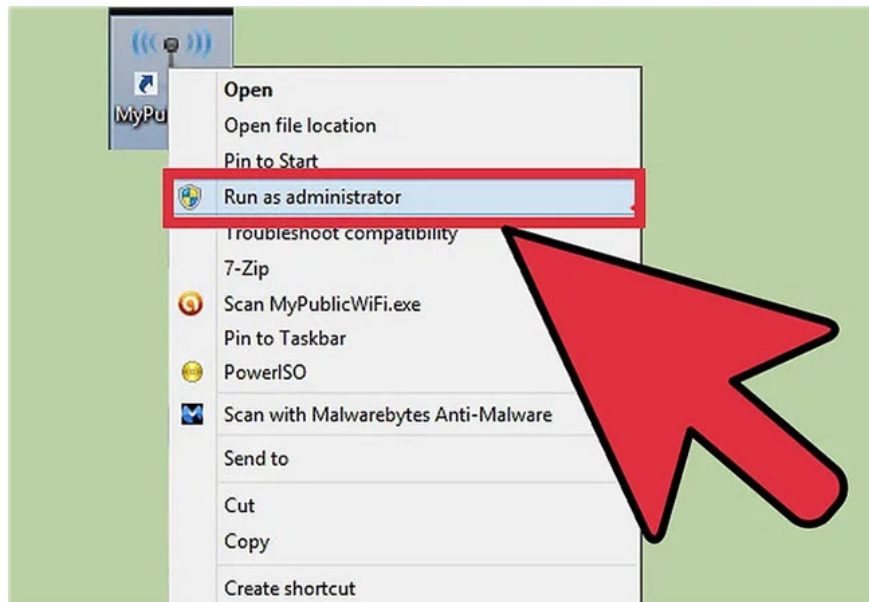
2. Connect to WiFi adapter.



Connect WiFi adapter

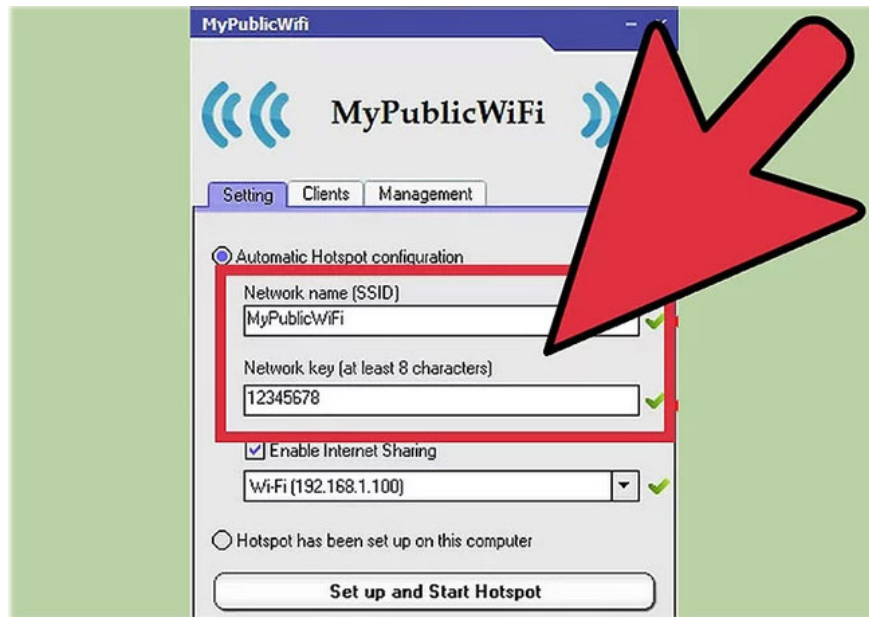
Let the drivers install themselves. It may take some time depending on the availability of updates, computer configuration, and Internet speed as well.

3. Start MyPublicWiFi in admin mode.



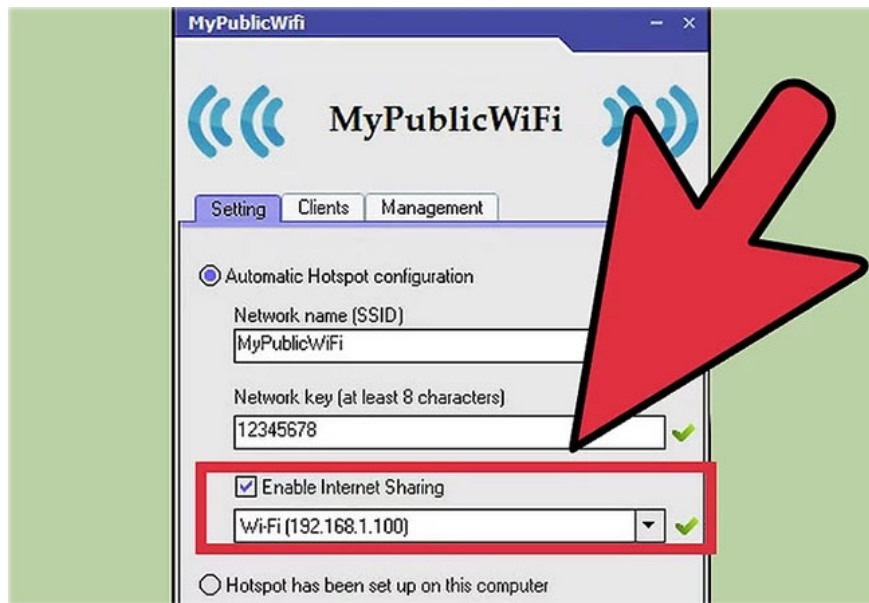
Start MyPublicWiFi in admin mode

4. Select a network name and password.



Choose a network name and password

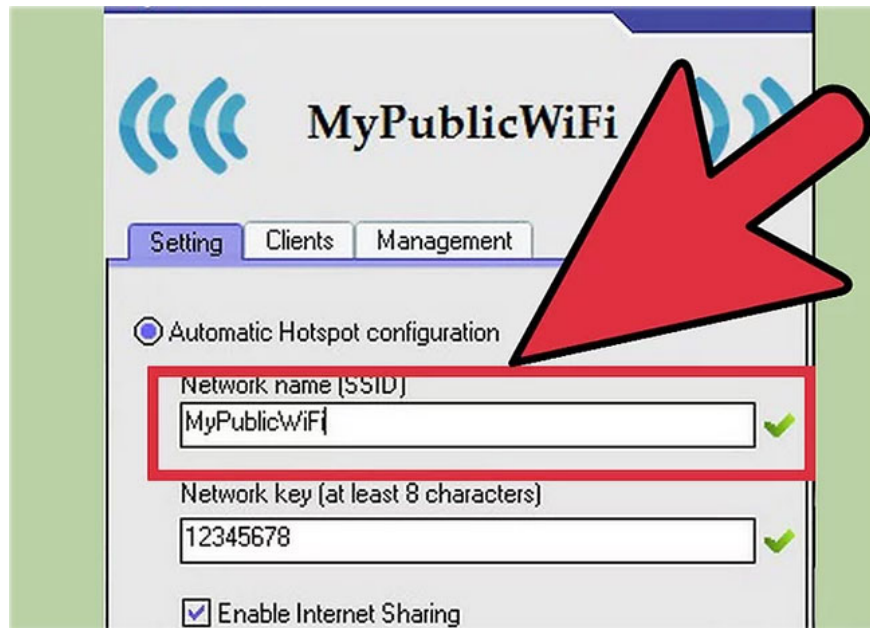
5. Find the **Enable Internet Sharing** drop-down menu . Select the network you want to share. In this case, select the WiFi connection created for the main router connected to the Internet.



Select the network you want to share

6. Click **Set Up and Start Hotspot** .

7. Connect to the network you named in your setup!



Please connect to the network you have named in setup

You finished reading the article "**How to use a Windows 10 PC as a WiFi extender**" edited by the [TipsMake](#) team. We hope this article has provided you with many useful tech tips and tricks. You can search for similar articles on tips and guides. Thank you for reading and for following us regularly.