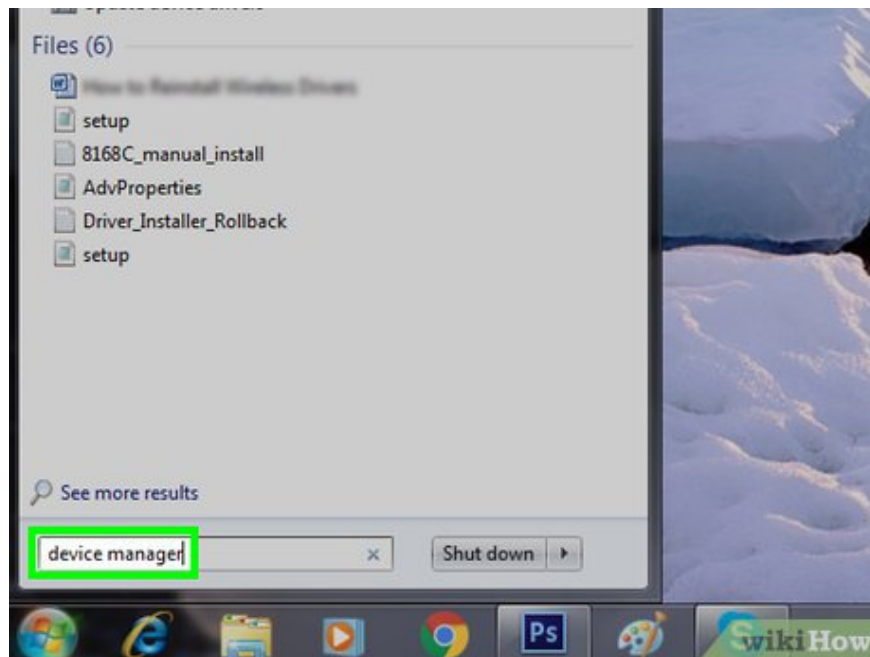


How to Update Video Card Drivers on Windows 7

This article shows you how to update the driver for the video card (also known as 'graphics card') on a Windows 7 computer. You can use Device Manager, built into the computer to check for over-the-air video card updates; If you can't find an update, it's possible that the video card's software or the video card manufacturer's website has the driver you need.

Use the manufacturer's website



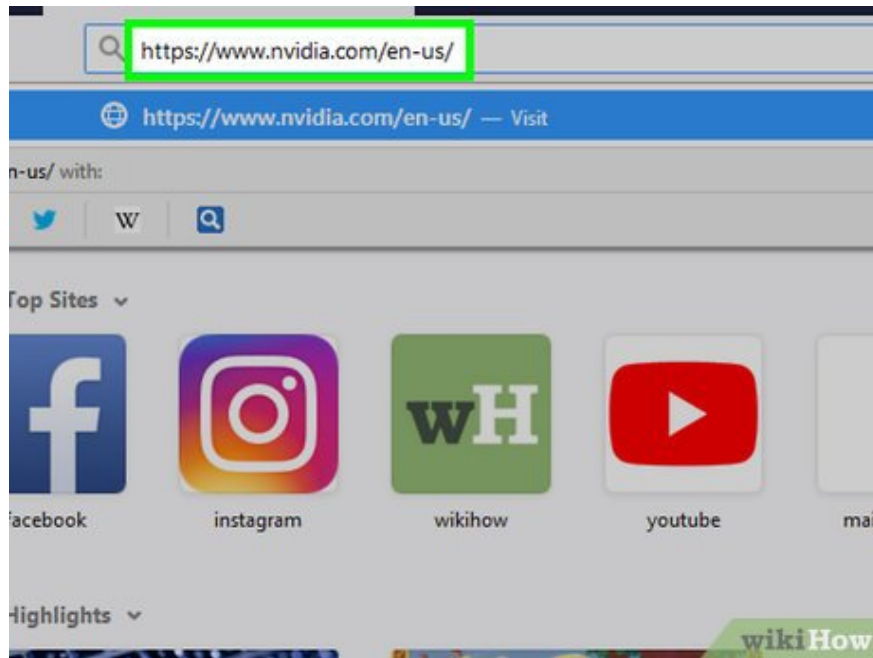
Determine the manufacturer of your computer's video card. You can find the video card name in Device Manager. If you haven't used Device Manager or haven't found video card information, do the following:

Open **Start** and click the search bar.

Type `device manager`, then click **Device Manager** in the menu.

Expand the "Display adapters" heading by double-clicking it.

Note the manufacturer and video card name you want to update.



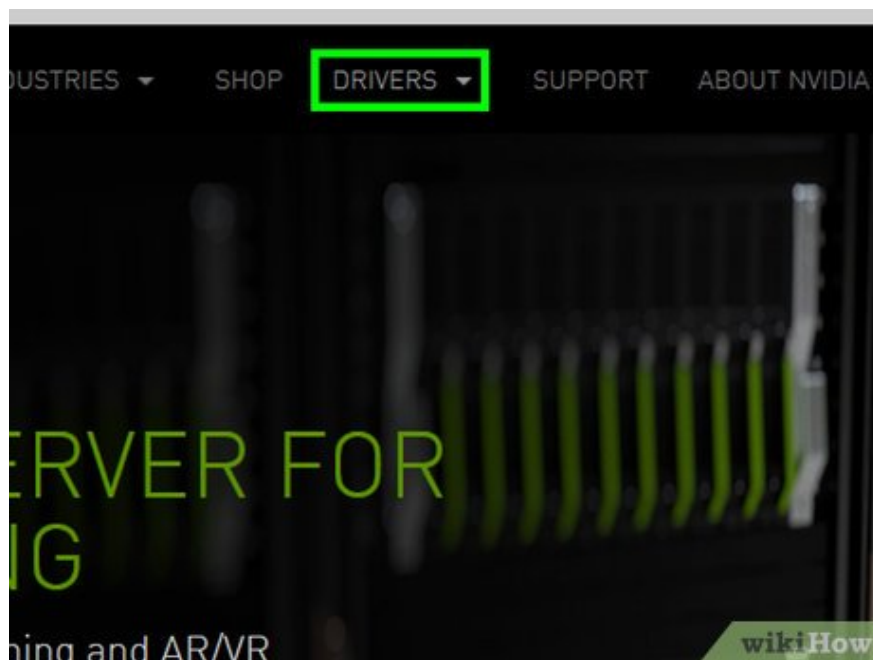
Visit the manufacturer's website. This step will vary depending on the video card manufacturer, and here are the websites of common manufacturers:

NVIDIA — <https://www.nvidia.com/en-us/>

AMD — <https://www.amd.com/us/Pages/AMDHomePage.aspx>

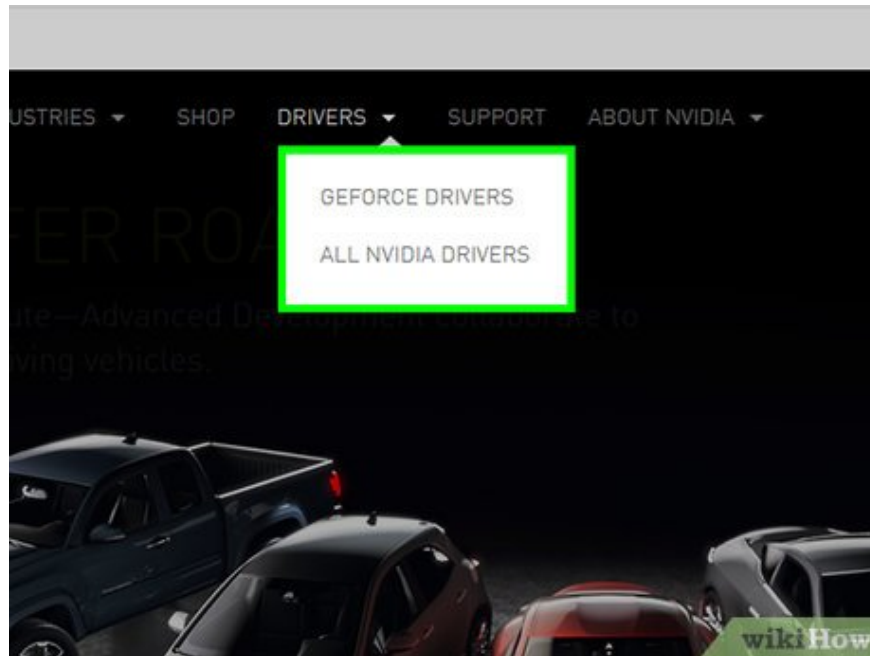
Alienware — <https://www.alienware.com/>

If you don't know the manufacturer's website, enter the manufacturer's name along with the word "website" into a search engine to see a list of possible matches.



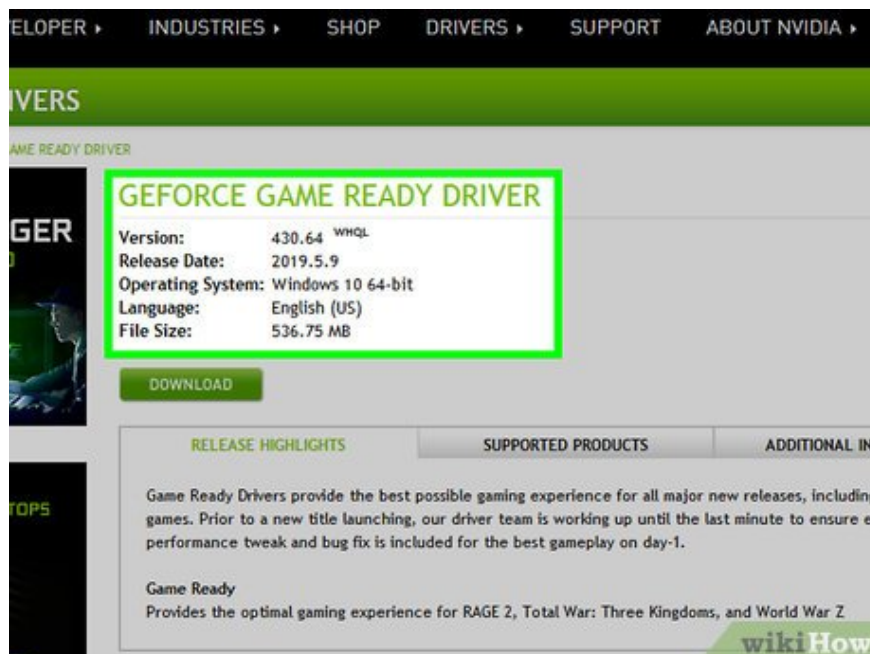
Look for the "Downloads" or "Drivers" section. In most cases, you'll see one of these options at the top of the page, but you may have to scroll to the bottom of the page and look under "Support" or something similar.

You may need to click the **Support** tab or another link before you can select **Downloads** or **Drivers** .



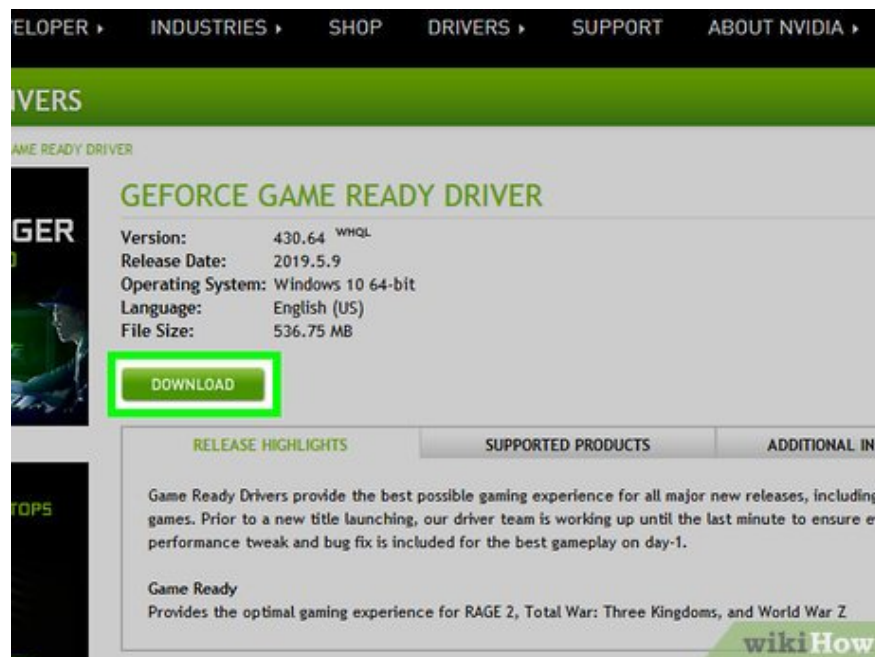
Select the video card. Click the name of the video card when you are asked to select a product line.

Or, you must enter the name of the video card you are using.



Find available updates. After selecting or searching for your video card, you will see a list of available update files. Look for the latest update and check if the release date is after your last Windows update date.

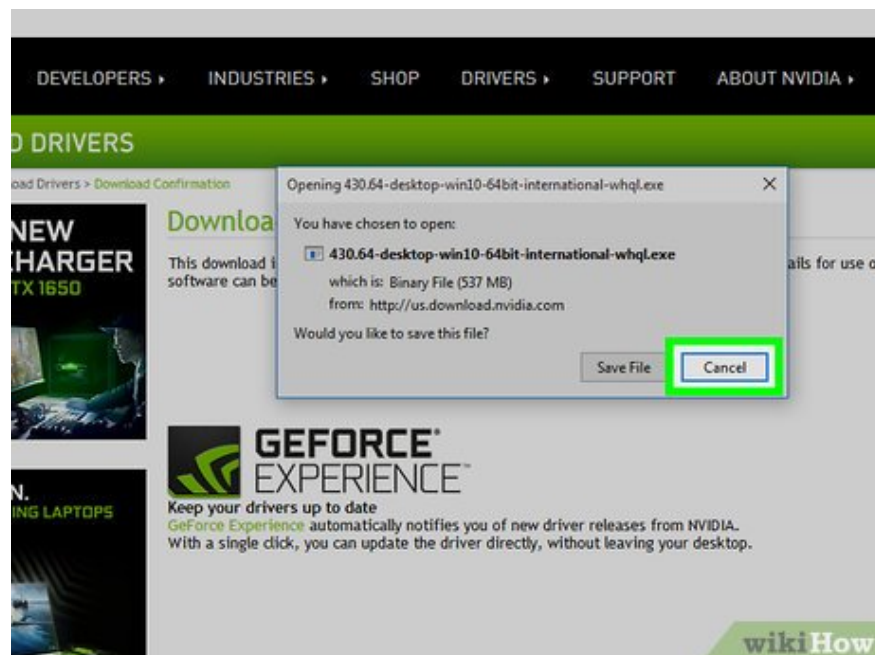
If you don't know the date the latest Windows or Device Manager update was installed, you can still try downloading and installing the file.



Download the update. If there's an update available, you'll click the link or click **Download** (or something similar) near the update's name to download the file to your computer.

You need to confirm the download by selecting the save folder or clicking **OK**.

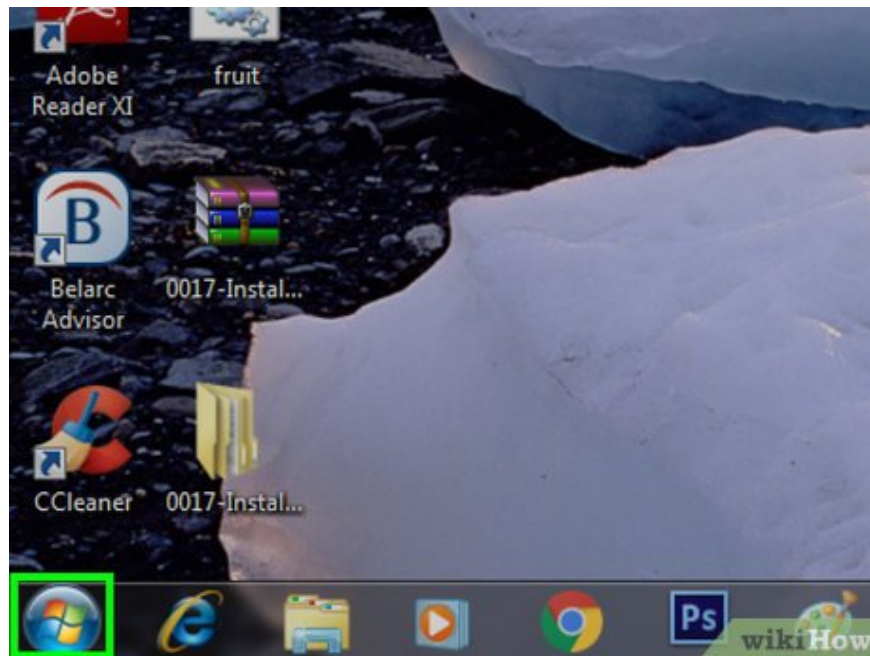
In some cases, some web browsers will classify driver update files as potentially dangerous or indicate that the same file could harm your computer. If you download files from the manufacturer's website, you can ignore these warnings.



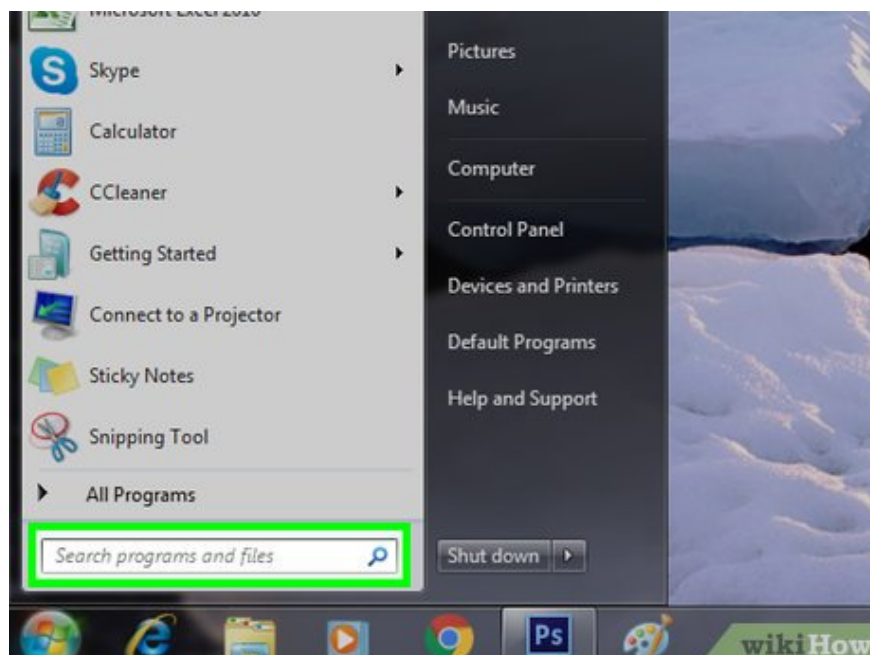
Install the driver. Open the folder where the downloaded update file was saved and double-click it, then follow the on-screen instructions to install the driver.

If the driver file is downloaded as a ZIP folder, you will need to extract the folder by right-clicking and clicking Extract Here . The next step is to open the extracted folder and double-click on the driver file.

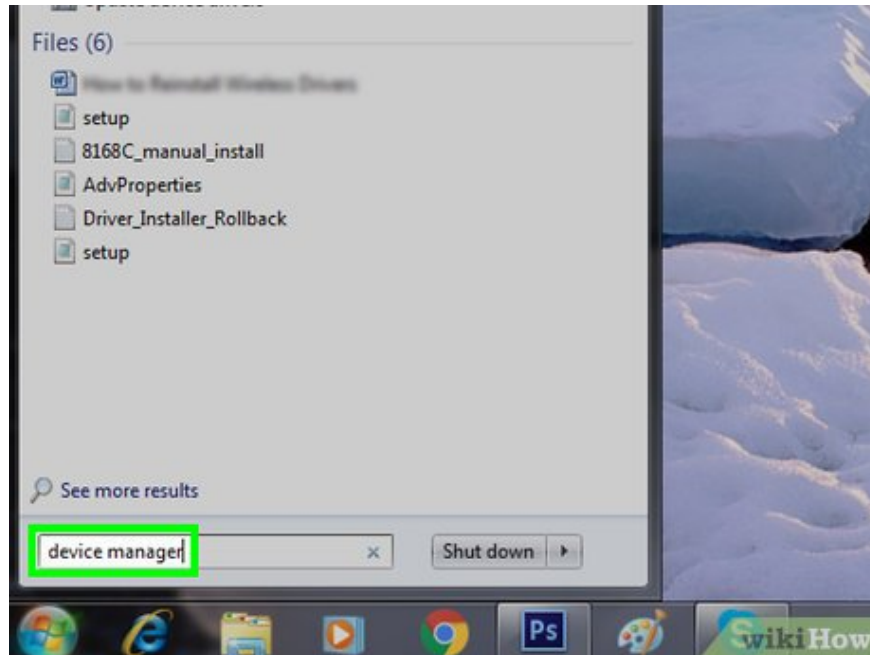
Using Device Manager



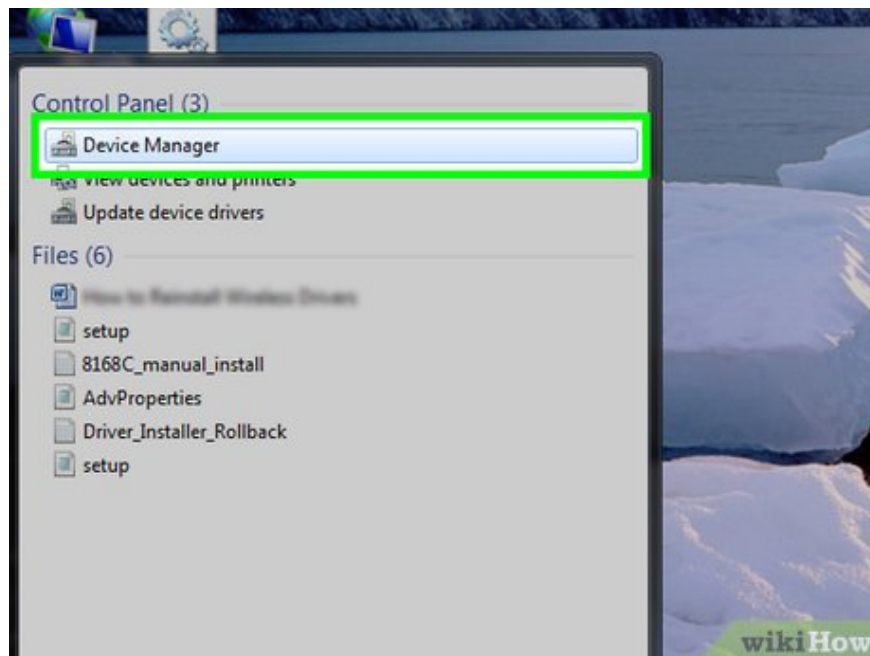
Open Start . Click the Windows icon in the bottom left corner of the screen. The **Start** menu immediately appears.



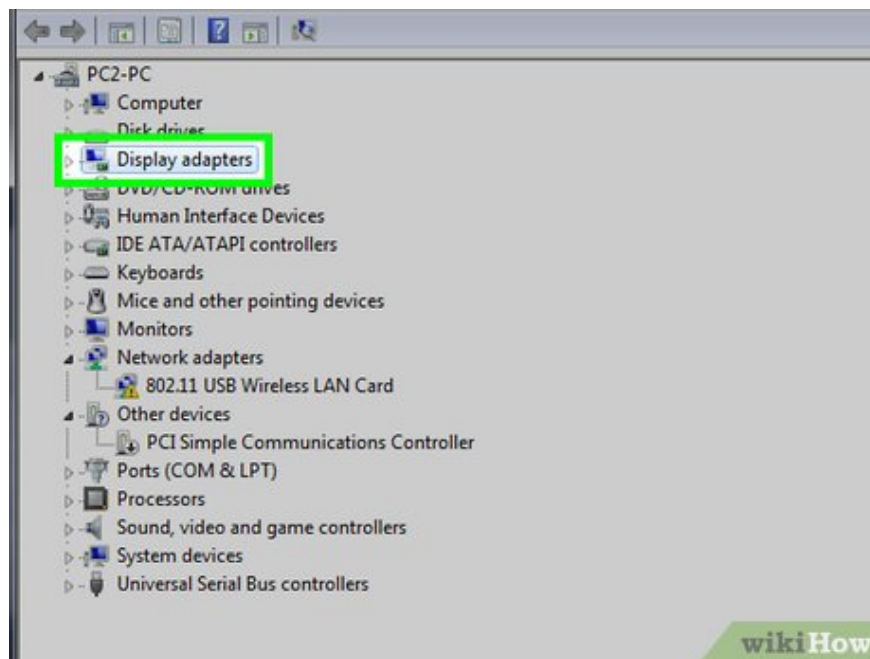
Click the search bar. This bar displays below the **Start** menu .



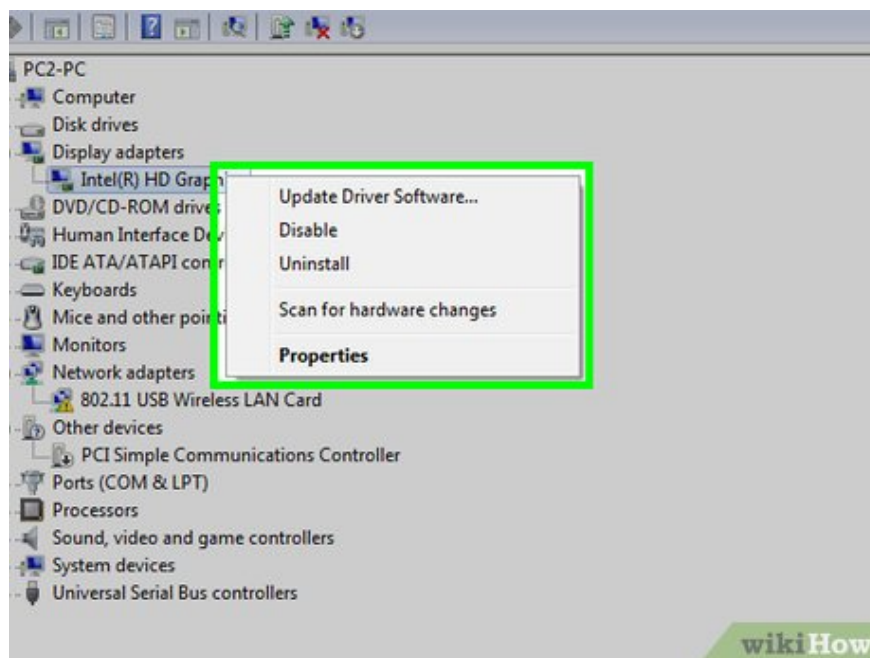
Search for Device Manager. Enter device manager to do this.



Click Device Manager . You'll see it near the top of the **Start** menu . Click it to open the Device Manager window.

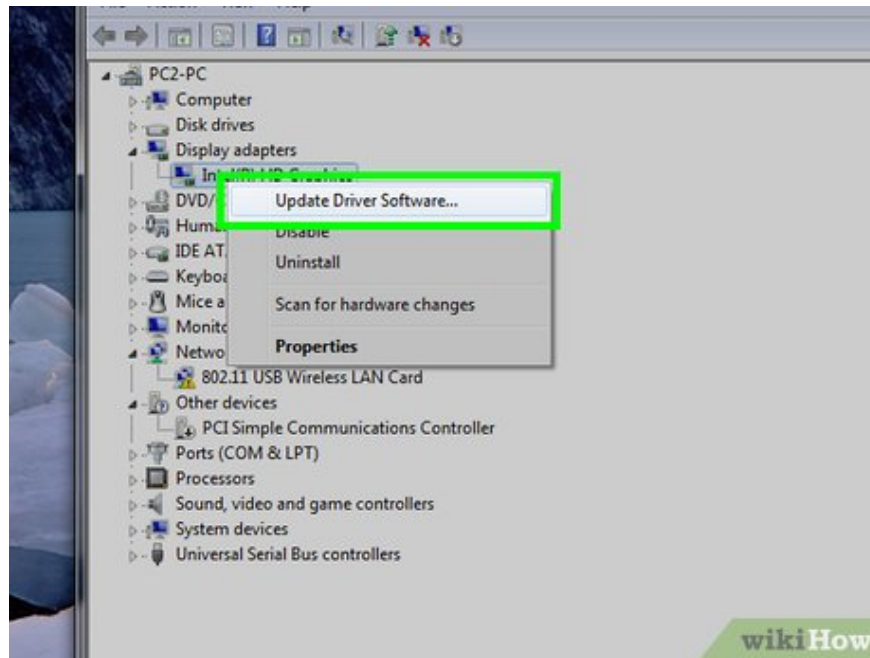


Expand the "Display adapters" heading. If you don't see the video card name below the "Display adapters" selection in the middle of the Device Manager window, double-click this title to see the video card.

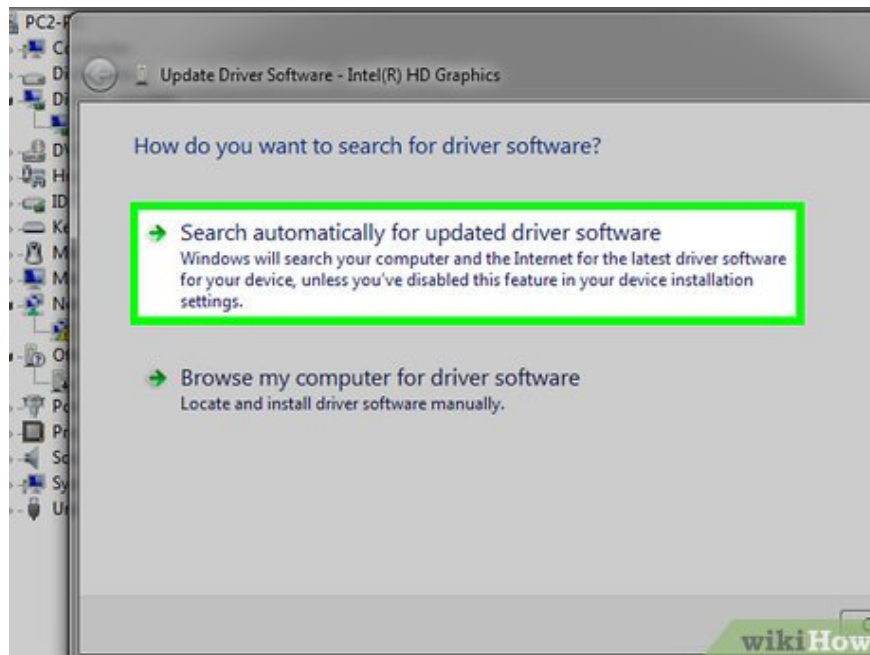


Right click on the video card name. A menu immediately appears here.

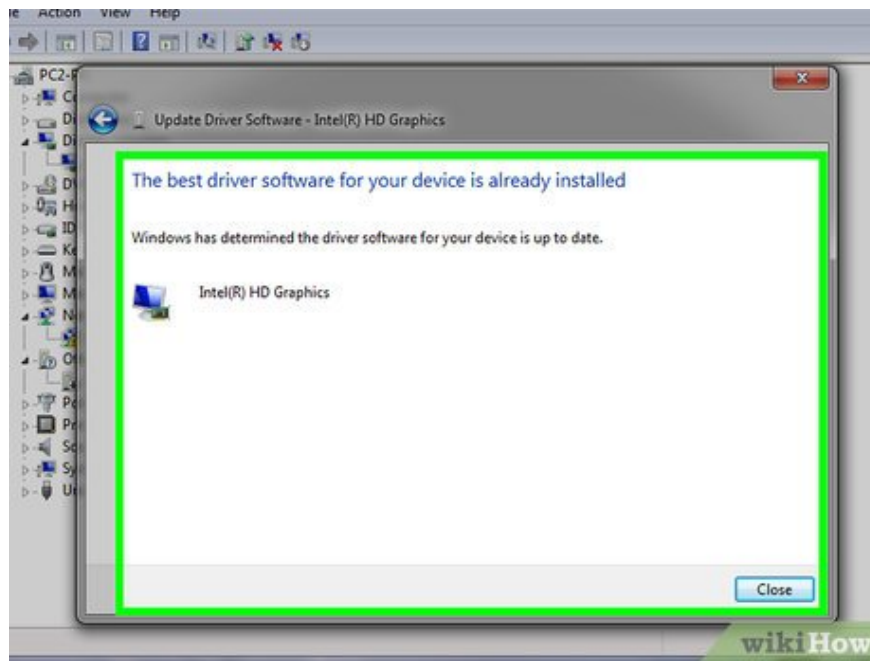
If you see multiple video card names, right-click the one you want to update.



Click Update Driver Software... (Update driver software...). This is the menu option currently displayed. A window immediately appeared on the screen.



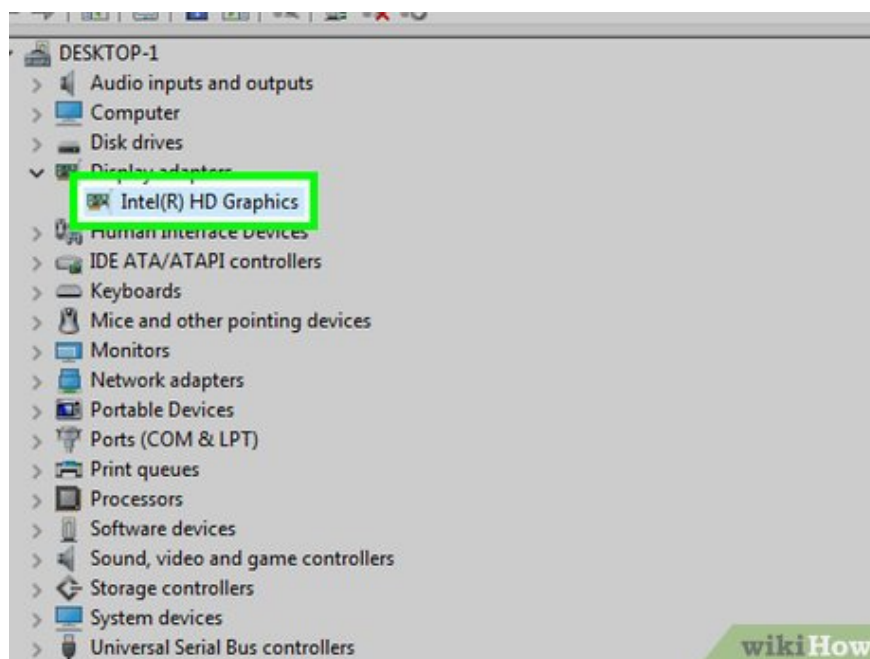
Click Search automatically for updated driver software. This option is available in the window that is displayed. The computer immediately searches for available drivers online.



Follow the instructions on the screen. If an update is available for your video card, you'll need to follow the on-screen instructions to select, confirm, and install the driver.

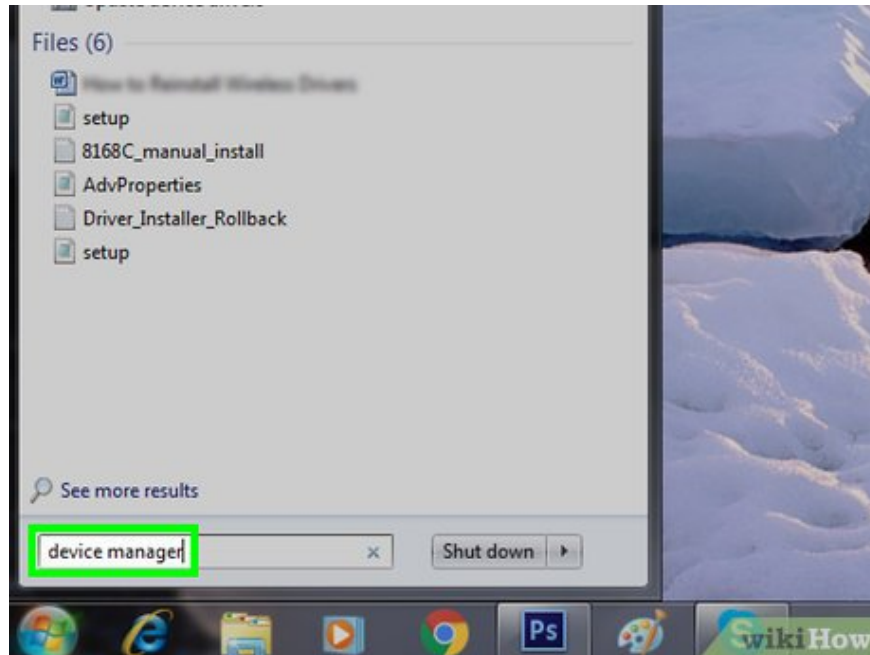
If you receive a notification that your video card has been updated or is using the latest version, it means your video card is up to date. If you want to check, try using the video card's software or the video card's website.

Use video card software



Know when to use this method. If your computer has a dedicated video card installed (such as retrofitted), the video card will have its own installation software. This software often provides the option to automatically update the video card driver.

If you've tried using Device Manager without success, using your video card's software is a good next step.



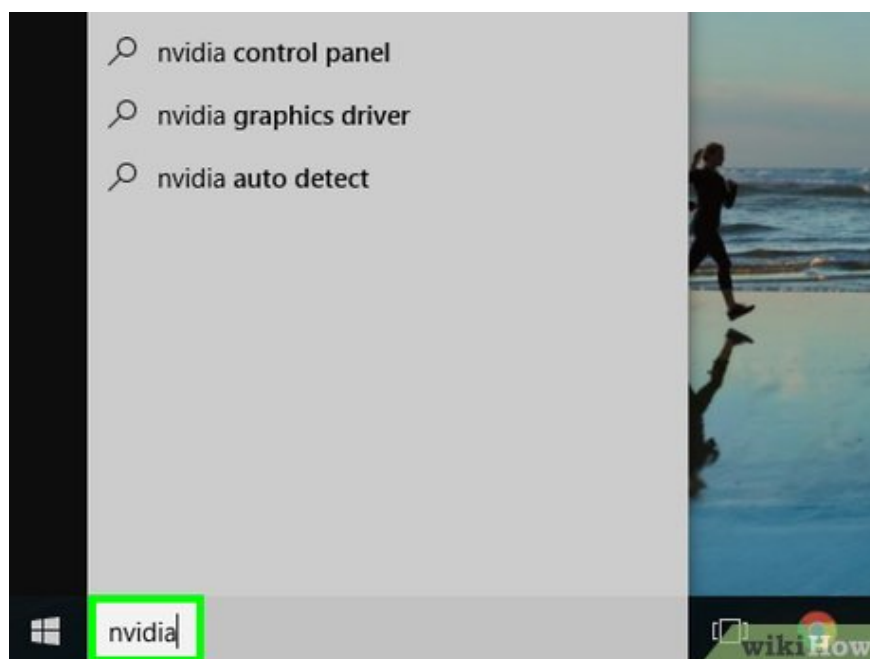
Determine the manufacturer of your computer's video card. You can find the name of the video card in Device Manager. If you haven't used Device Manager or haven't found video card information, do the following:

Open **Start** and click the search bar.

Type `device manager`, then click **Device Manager** in the menu.

Expand the "Display adapters" heading by double-clicking it.

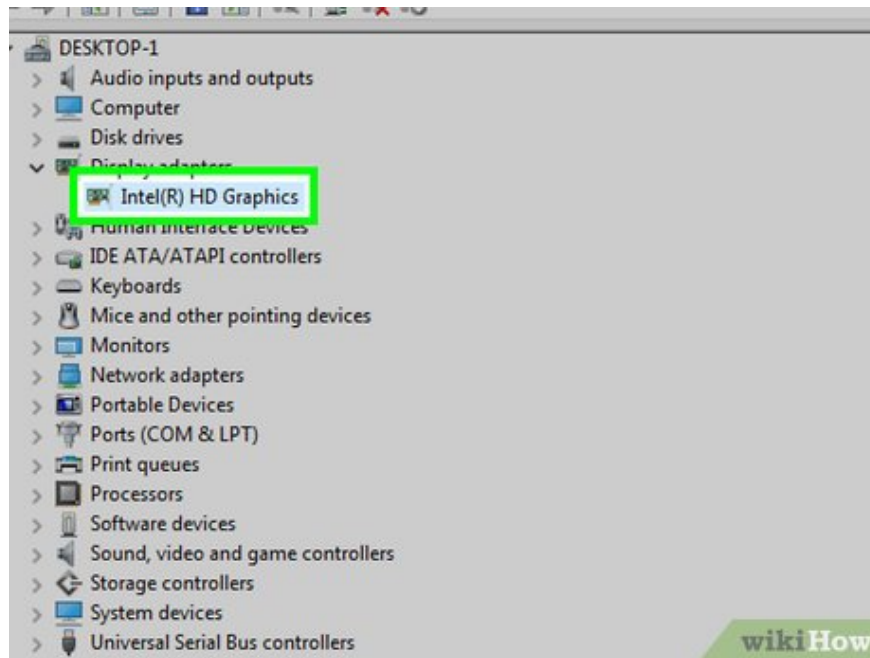
Note the manufacturer and video card name you want to update.



Search for the video card program on your computer. Click the search bar below the **Start** menu , then enter the video card manufacturer or product line name. This will open a list of suitable software.

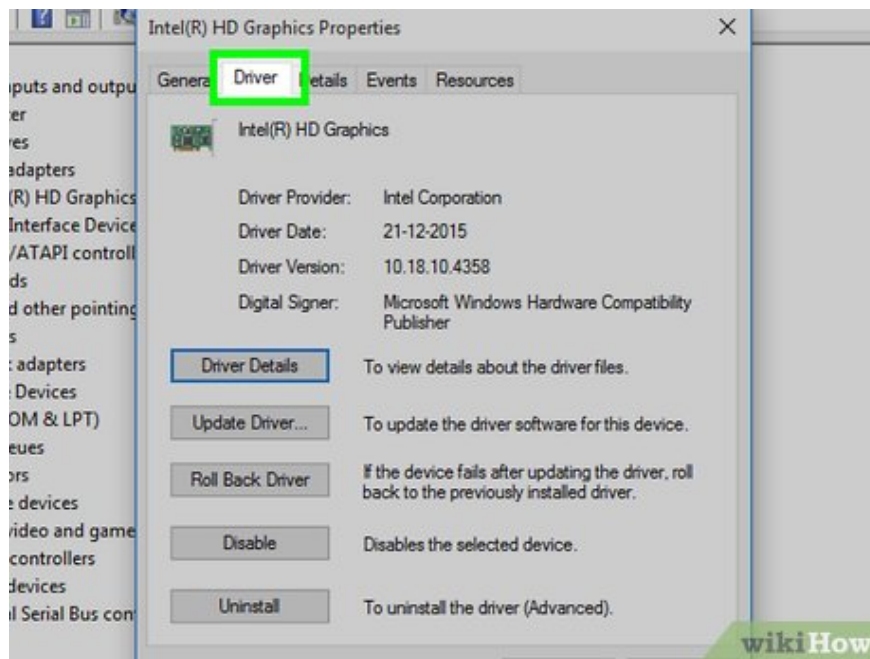
For example, if your computer has an NVIDIA GeForce video card installed, you would enter `nvidia` or `geforce` here.

If entering the manufacturer's name doesn't work, you can try entering the video card name.



Open the video card program. Click the program name in the **Start** menu to do this. You will see the program window appear on the screen.

If you can't find the video card program installed on your computer, you can still use the manufacturer's website to find and download the driver.

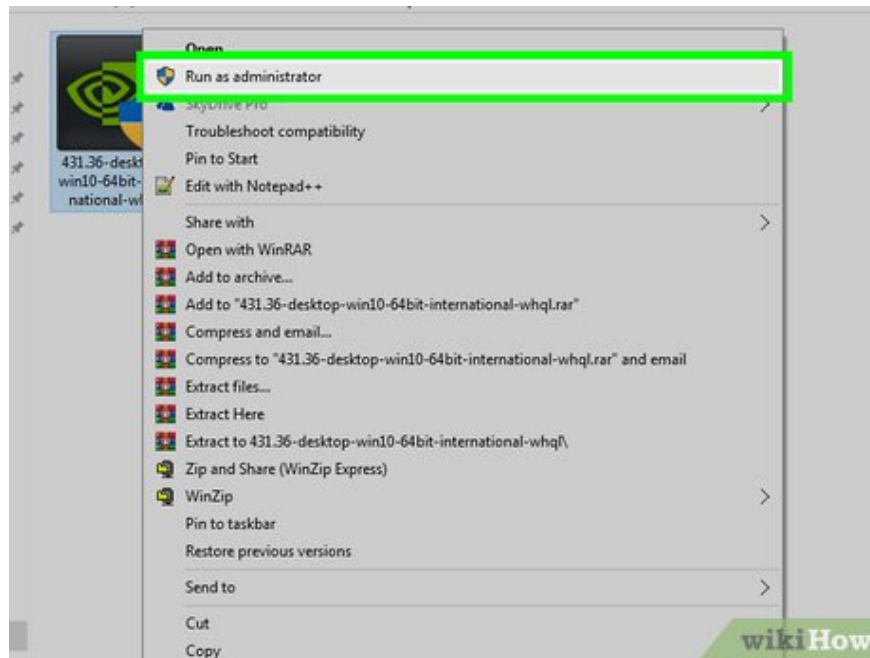


Click the Updates or Drivers tab . You'll usually find the right choice in the toolbar at the top of the program's window, but you'll need to look around the window to find the right tab.

With some programs, you must click the menu icon (such as ?) in the program window to open a toolbar with **the Updates or Drivers selection**



Find available driver updates. When you open the "Updates" or "Drivers" page, look for available updates near the top of the page.



Download and install available drivers. If you see a driver available, click **Download** next (or below) to download the driver. When the download is complete, the video card software automatically installs the driver.

In some cases, you may need to open the installation program by clicking **Install** or something similar (for example, the GeForce Experience program requires you to click **EXPRESS INSTALLATION** to get started). driver installation process).

You will be asked to confirm the installation by clicking **Yes** .

You finished reading the article "**How to Update Video Card Drivers on Windows 7**" edited by the [TipsMake](#) team. We hope this article has provided you with many useful tech tips and tricks. You can search for similar articles on tips and guides. Thank you for reading and for following us regularly.