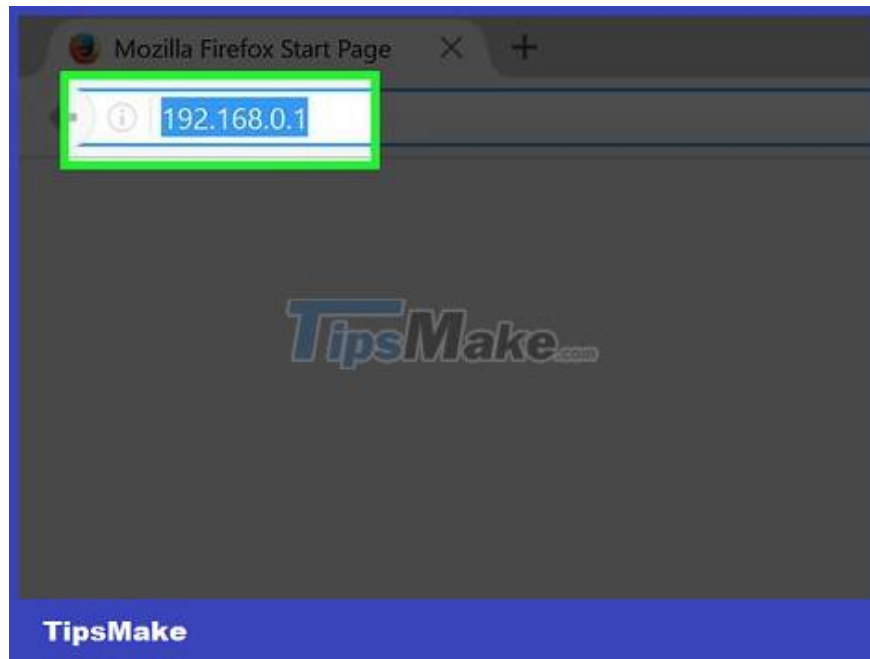


How to Update Router Firmware

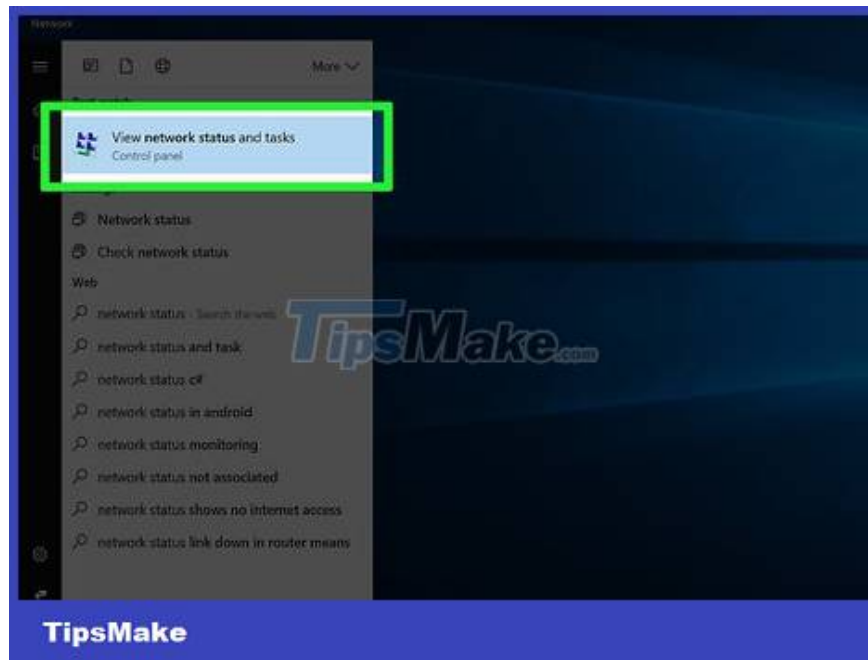
Updating your router's firmware will improve connectivity and make the device more secure. You should install the latest available updates to keep your network secure and productive. Most routers have a built-in update checker, which may (or may not) do the entire process automatically. With an Apple AirPort router, you can use the AirPort Utility program to check for updates.

Find router address (on Windows)

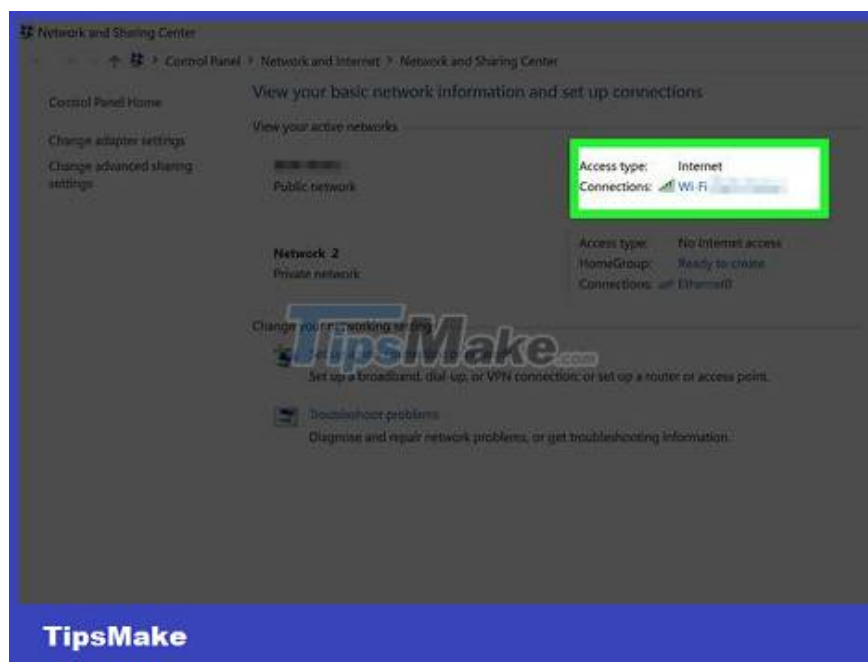


Find the address on the router. You can access the router by entering the router's IP address into a web browser. **Most routers are stamped with information including the IP address on the bottom of the device.** If your router does not have a sticker or you cannot directly access the router, follow the steps below.

See the next section if you use a Mac computer.

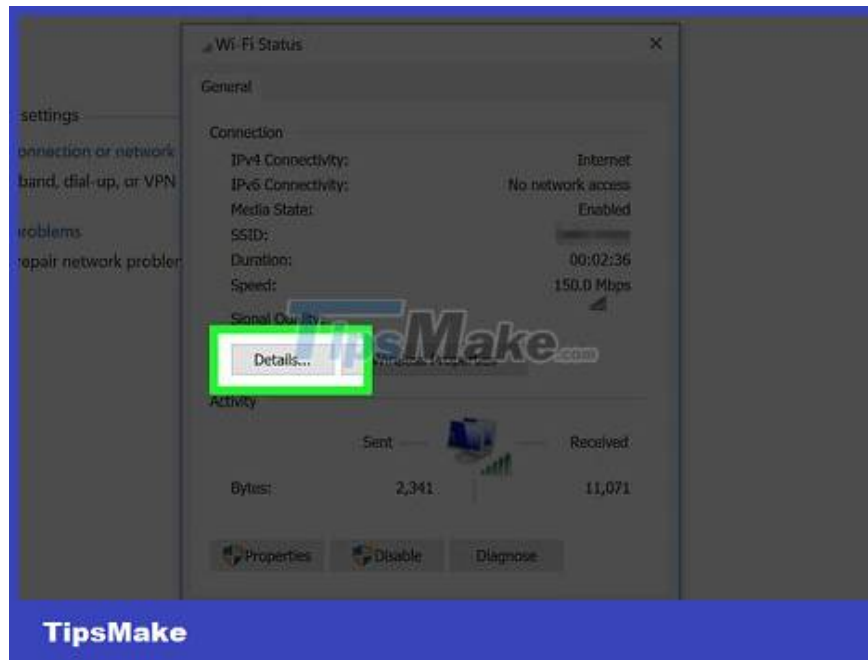


Open the Start menu and type "network status". The "View network status and tasks" window will open.

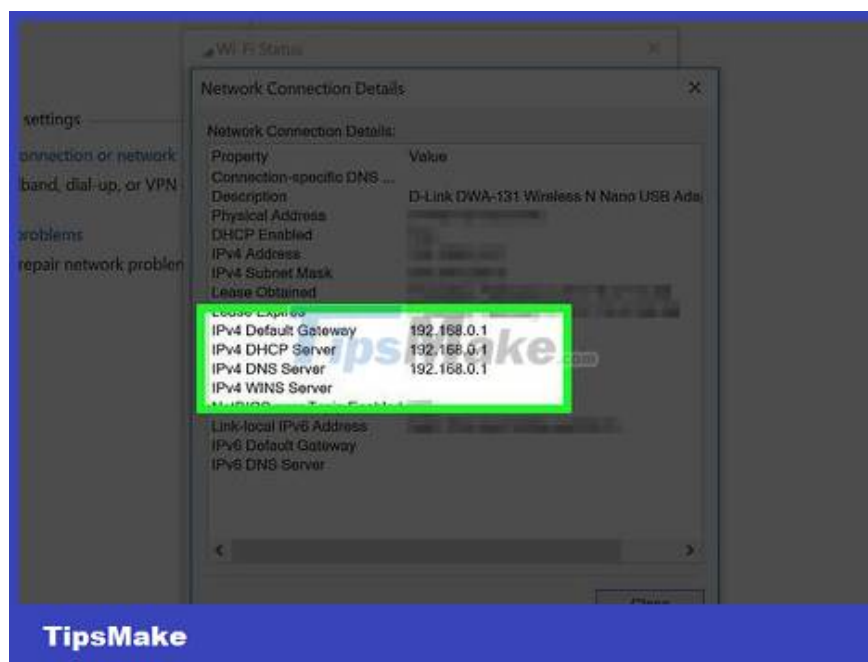


Click on the current connection name in the upper right corner. This option has an icon for the connection you're using (Wi-Fi, Ethernet, etc.).

You need to make sure you're connected to your router's network.



Click the "Details" button on the window that appears. A list of items opens.



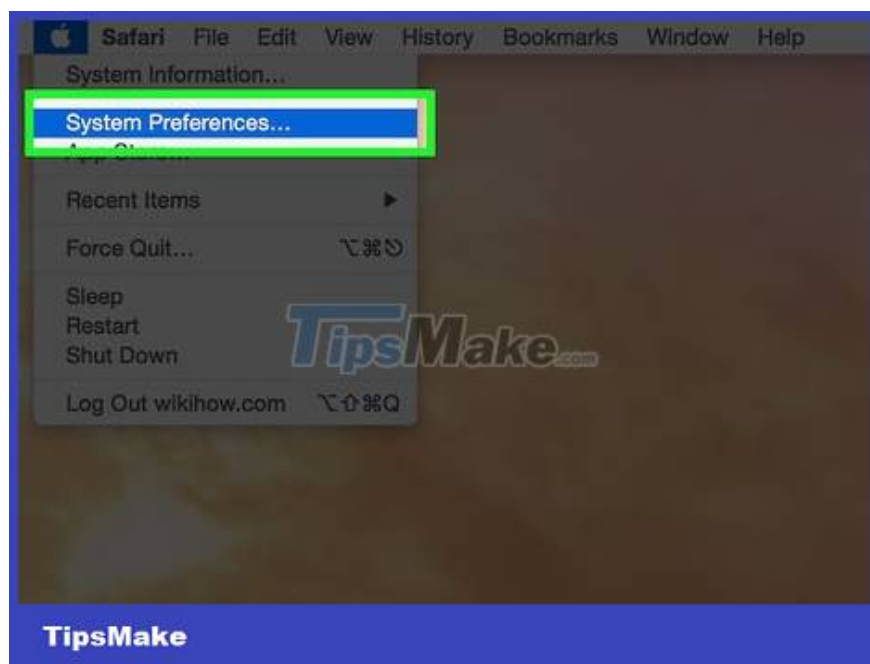
Find the **IPv4 Default Gateway** section. The IP address listed here is the router's IP address. Take note of this address and see the router update section below.

Find router address (on Mac)



Find the address on the router. You can access the router by entering the router's IP address into a web browser. **Most routers are stamped with information including the IP address on the bottom of the device.** If your router does not have a sticker or you cannot directly access the router, follow the steps below.

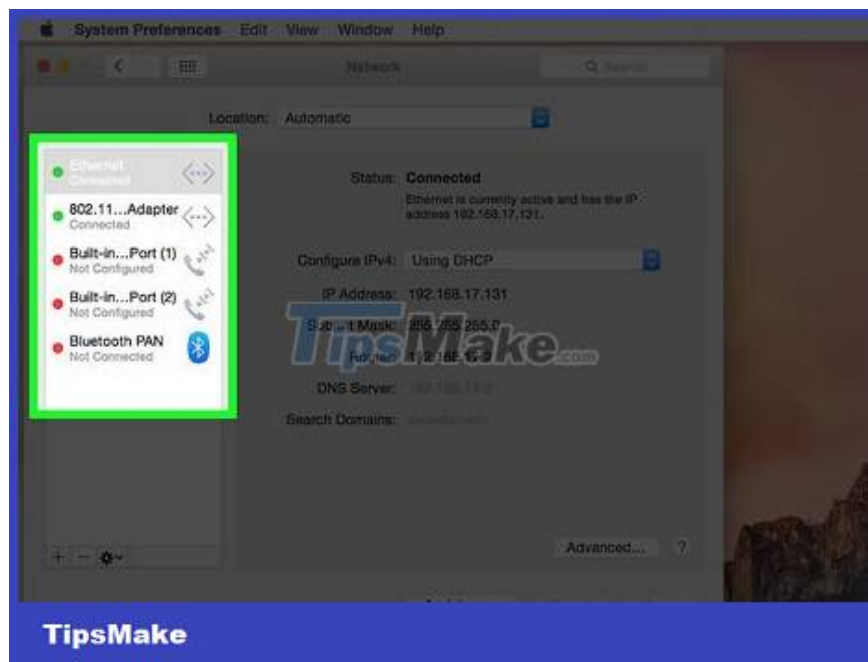
If you use an Apple AirPort router, you can see the AirPort router update section below.



Click the Apple menu and select "System Preferences." The System Preferences window will appear.

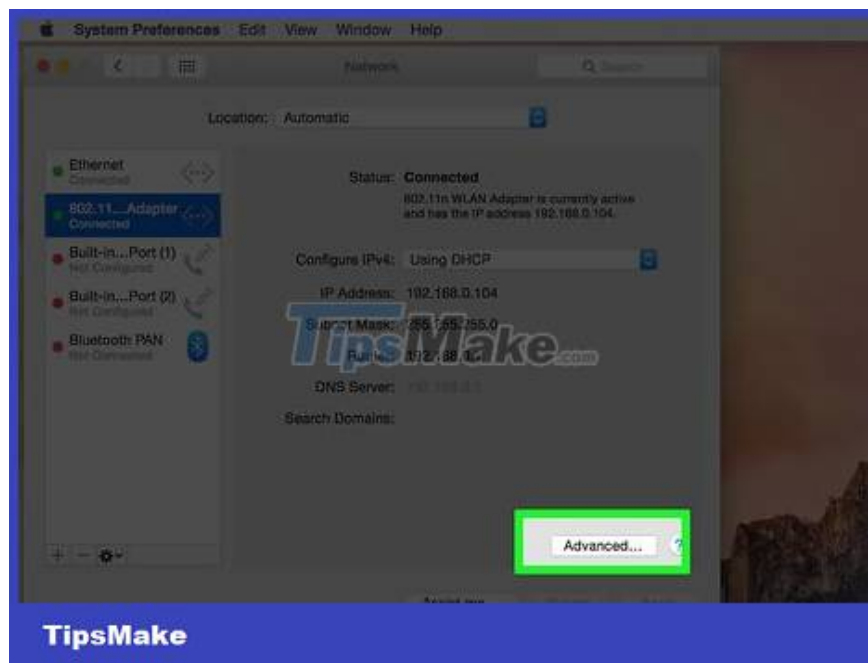


Click the "Network" button. All network connections will appear.

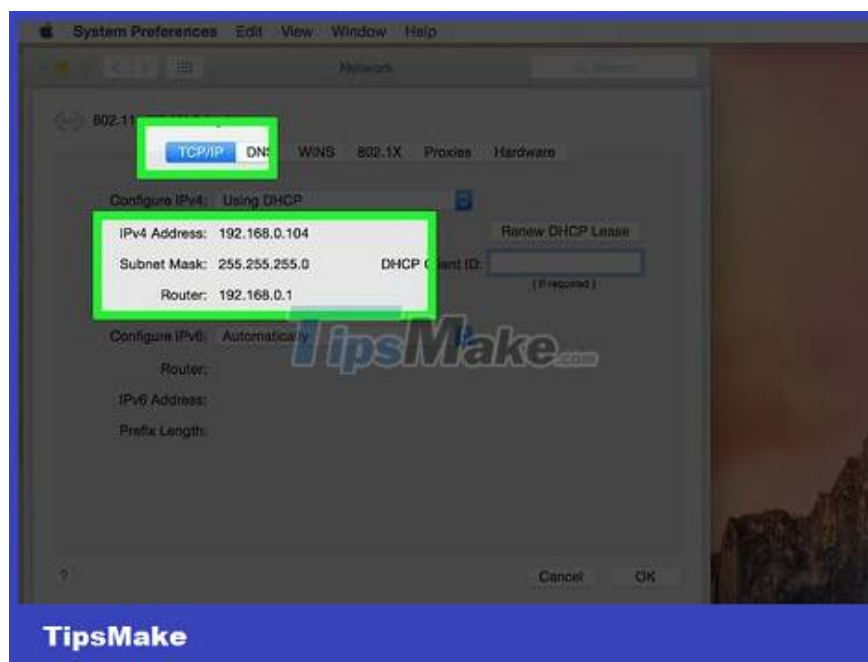


Select your connection in the left pane. Next to the option there will be a green dot and below it is the "Connected" status.

You need to make sure you're connected to your router's network.



Click the "Advanced" button. A new window will open.

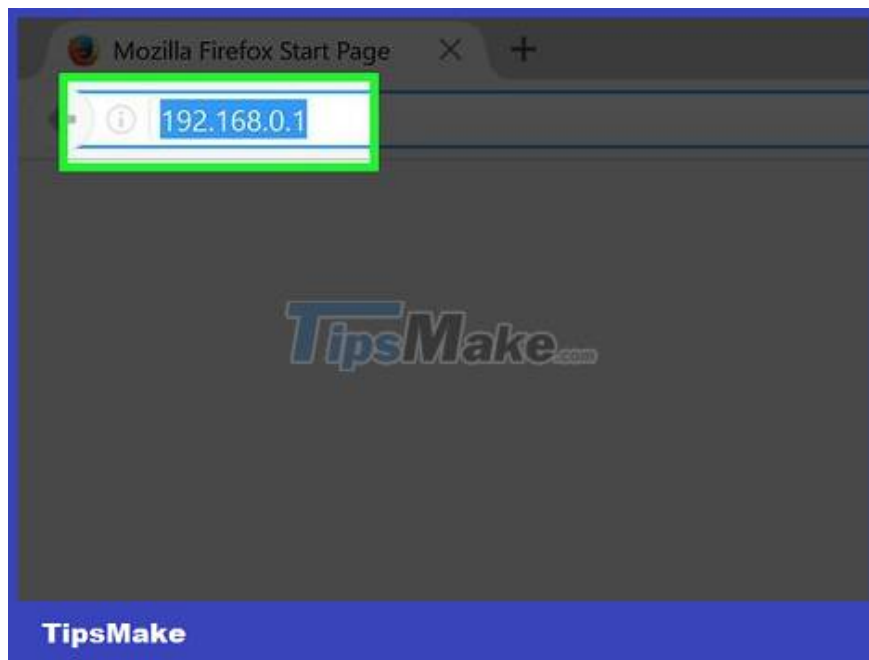


Click the "TCP/IP" tab and look at the "Router" section. This is the router's IP address.

Install router updates

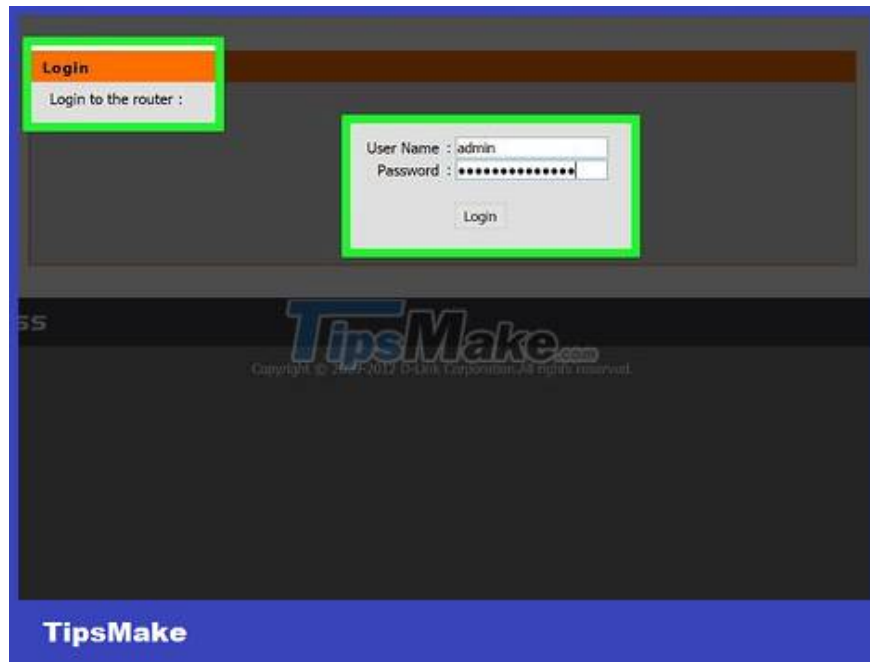


Connect to the router via Ethernet cable. Some routers are set up to not allow users to access the configuration page when connected via Wi-Fi. Connecting using an Ethernet cable will help ensure that you can access the configuration tools properly.



Enter the router's IP address in the address bar of your web browser. You can find this address by following the methods described above.

Enter the router's IP address in the same way you would when visiting a website.



Enter login information. When you access the configuration page, you will be asked to enter your login information. If you don't have this information saved, try some of these common default templates:

Try leaving both data fields blank. Many routers do not require a username or password.

Try entering the username "admin" and leaving the password field blank. If that doesn't work, enter the password as "admin".

Look up the manufacturer and model of your router at routerpss.com. Default login information may appear.

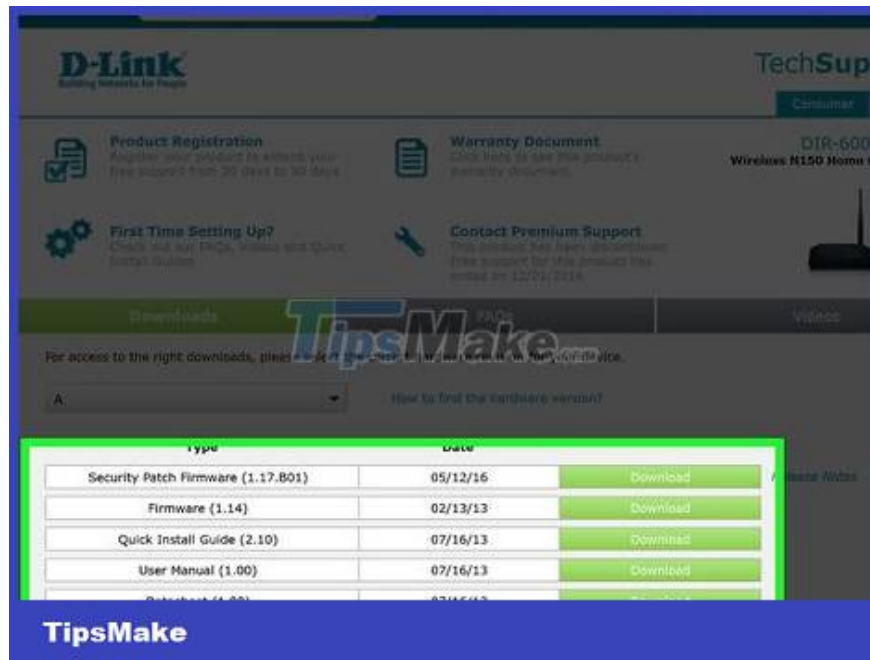
If the default information is not accepted and you can't figure out how to log in, you'll need to reset the router by holding down the physical Reset button on the back of the device. This will clear all of your router's settings and may disconnect your Wi-Fi connection (if you've changed any default settings for the network). You can then use the default login information.



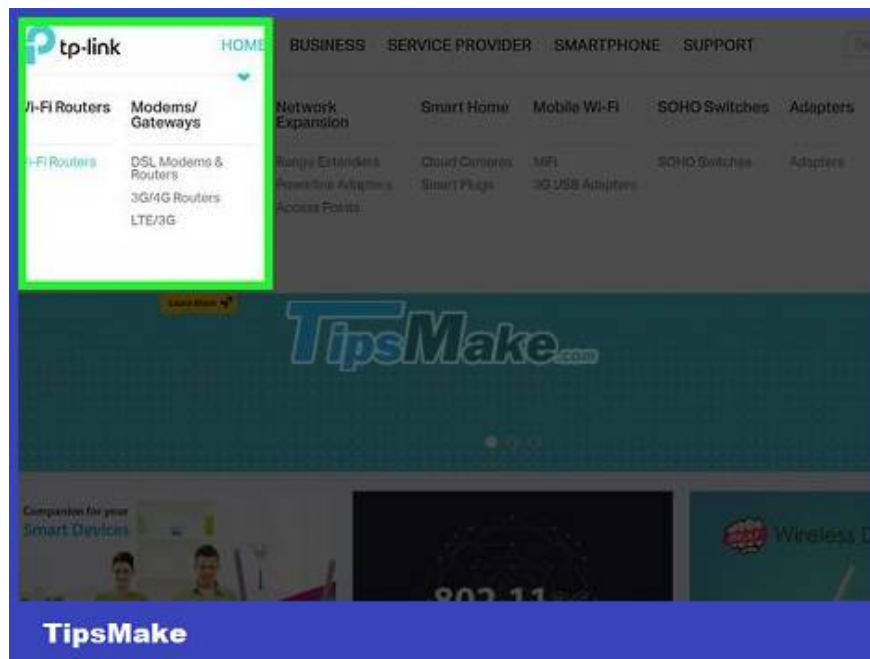
Open the "Firmware", "Router Upgrade" or "Update" page. The page name will vary depending on the router manufacturer. The location of the page is the same, but you can usually find it under "Administration", "Utilities" or "Maintenance".



Click the "Check" button to check for new updates. Many routers have a button for checking for new firmware updates.



Download the latest firmware file as a link if available. Depending on your router, you may be provided with a link to the latest firmware version, or the router will even download it itself.

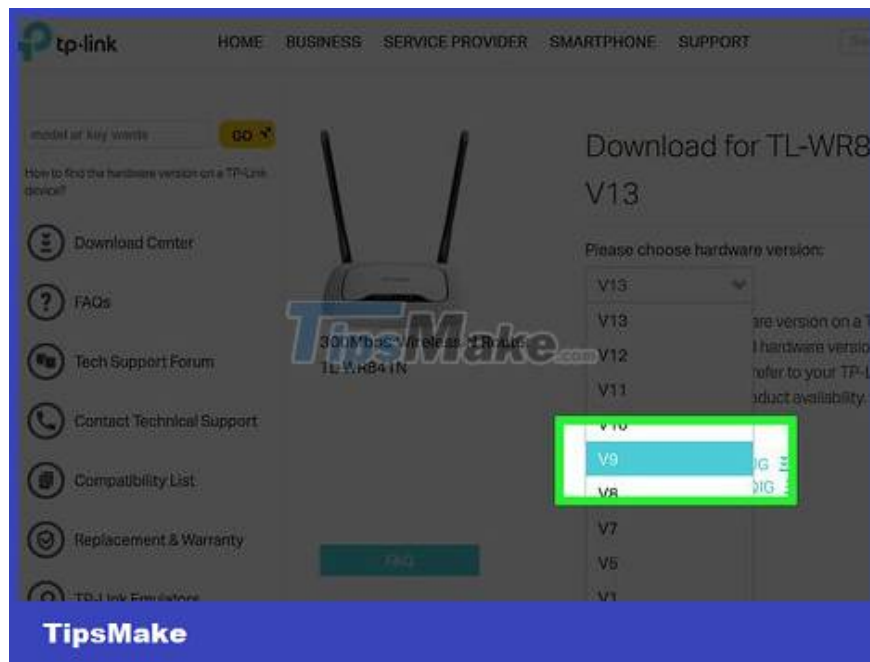


Visit the manufacturer's support page if you don't see any links. If a new version of the firmware is available but you don't see any link, download it from the manufacturer's site. You can download these files in the Support section of the home page.

Find a support page online. For example, the keyword "Netgear support" will return the page netgear.com/support link.

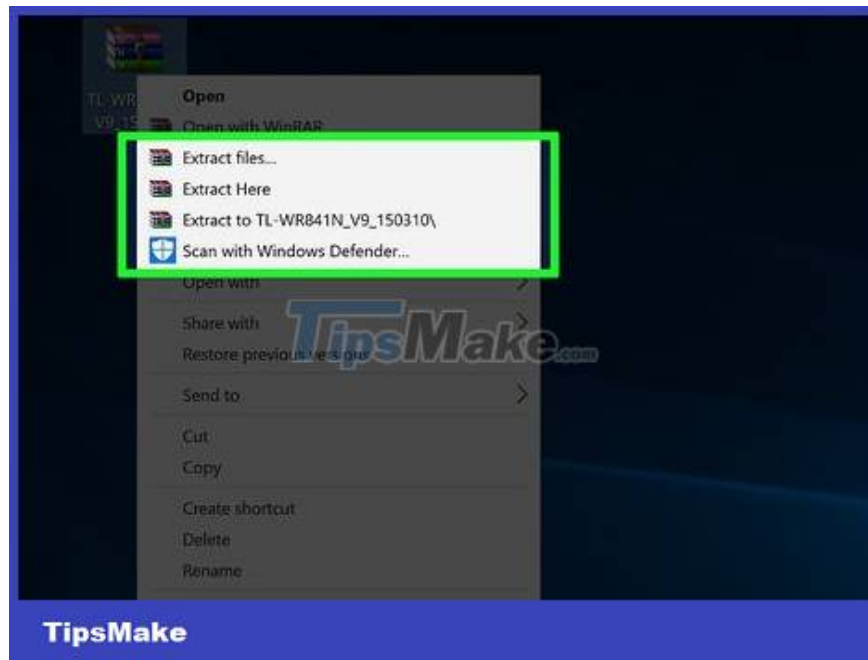


Enter your router's model in the search box on the support page. You can find your router's model number at the top of the configuration page. Then, enter this model number into the search bar on the manufacturer's website.



Find the latest firmware files. Depending on the router, there will be a single firmware update, multiple files, or no files at all. Download the latest file based on date or version number. The file will usually be downloaded in ZIP format.

You need to make sure you don't download an older version than the one you're using. You can see the current version on the router's firmware update configuration page.



Unzip the ZIP file. Once the firmware file is downloaded, double-click the ZIP file to open it, then click "Extract" to extract the contents. Usually, you will receive a file with a strange extension.



Upload files to the router. Returning to the router's firmware update configuration page, click the "Choose File" button and navigate to select the newly extracted file. Then, click the "Upload" button on the router's configuration page.



Wait a while for the update to be applied. Once the file is uploaded, the firmware update process will begin. A progress bar will appear and this update process can take 3-5 minutes. The network will then be disconnected for a few minutes to allow the router to fully reset.



Reset the router if the update fails. If the firmware update doesn't work and you can't connect to the router, reset the router manually and try again. Press and hold the Reset button on the back of the router for 30 seconds to reset the device to factory settings. You will need to reconfigure the network if you have previously changed any options in the default settings.

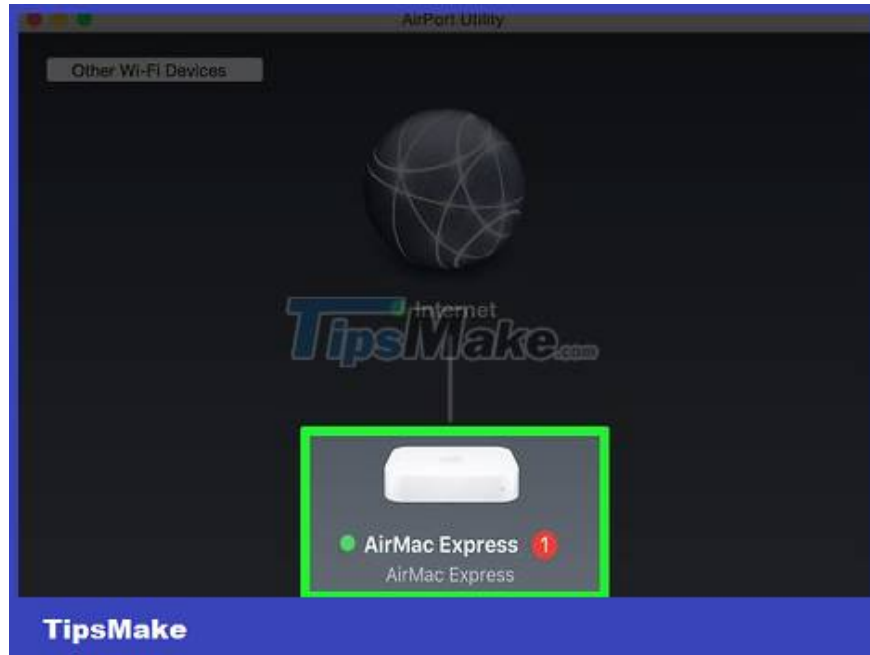
Update AirPort Router



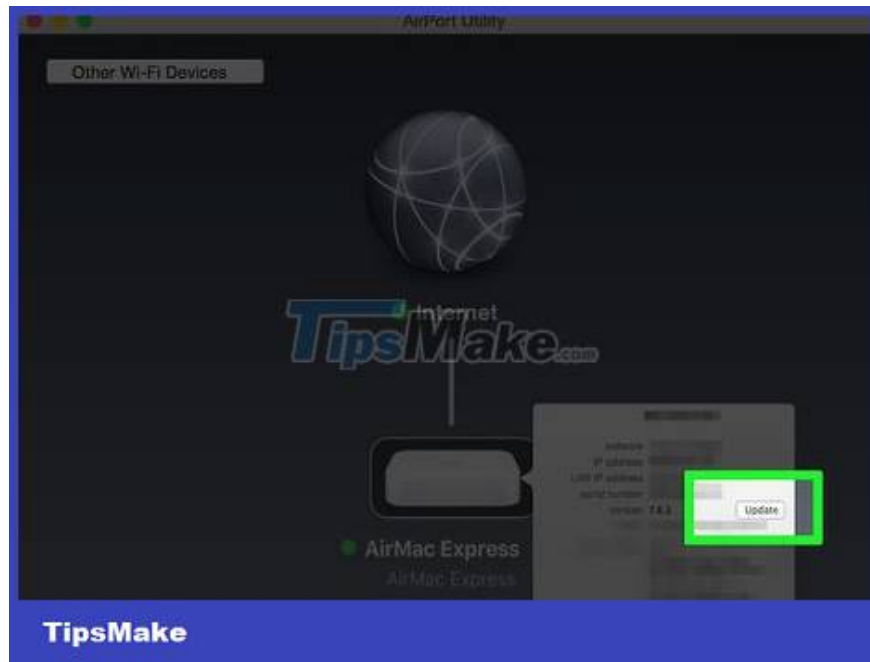
Open the AirPort Utility program in the Utilities folder. This program allows you to change the settings of your AirPort router. You can find the Utilities folder in the Applications folder.

On iOS devices, you can download AirPort Utility from the App Store.

AirPort Utility is available only for Mac OS X and iOS devices.



Click on the base station and enter your password. The red number next to the base station icon is a sign that a new update is available, but you need to enter a password for this sign to appear.



Click the "Update" button to download and install the new update. This button is only visible in case an update is available. Click "Continue" when it appears to confirm.



Wait for the router to update. This process may take several minutes to complete. During the update, the network will be temporarily disconnected.

You finished reading the article "**How to Update Router Firmware**" edited by the [TipsMake](#) team. We hope this article has provided you with many useful tech tips and tricks. You can search for similar articles on tips and guides. Thank you for reading and for following us regularly.