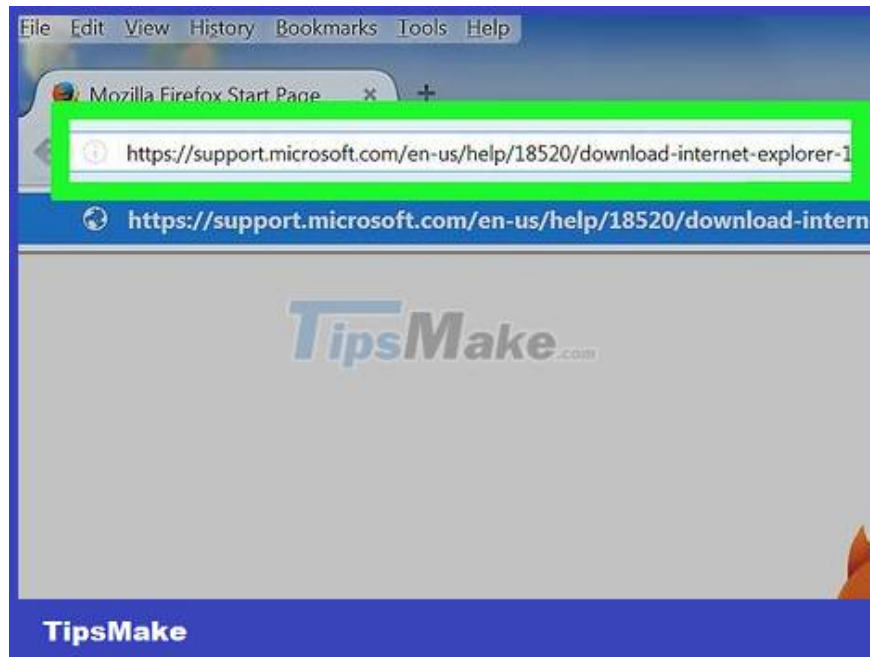


# How to Update Microsoft Internet Explorer

This article shows you how to update Microsoft's Internet Explorer browser. After the release of Internet Explorer 11, Microsoft stopped supporting Internet Explorer and did not continue to create any other updates. Internet Explorer browser is only available on Windows 7, Windows 8.1, and Windows 10 although Microsoft Edge is the default browser of this operating system.

## Update Internet Explorer to version 11



Visit the Internet Explorer 11 download page at <https://support.microsoft.com/en-us/help/18520/download-internet-explorer-11-offline-installer> . Open your web browser and visit Microsoft's Internet Explorer 11 download page.

Language	Native name	Windows version
Arabic	العربية	Windows 7 SP1 32-bit Windows 7 SP1 64-bit Windows Server 2008 R2 SP1 64-bit
Bulgarian	Български	Windows 7 SP1 32-bit Windows 7 SP1 64-bit Windows Server 2008 R2 SP1 64-bit
Chinese (Hong Kong SAR)	中文(香港特別行政區)	Windows 7 SP1 32-bit Windows 7 SP1 64-bit Windows Server 2008 R2 SP1 64-bit
Chinese (Simplified)	中文 简体	Windows 7 SP1 32-bit Windows 7 SP1 64-bit Windows Server 2008 R2 SP1 64-bit
Chinese (Traditional)	中文 繁體	Windows 7 SP1 32-bit Windows 7 SP1 64-bit Windows Server 2008 R2 SP1 64-bit
Croatian	hrvatski	Windows 7 SP1 32-bit Windows 7 SP1 64-bit

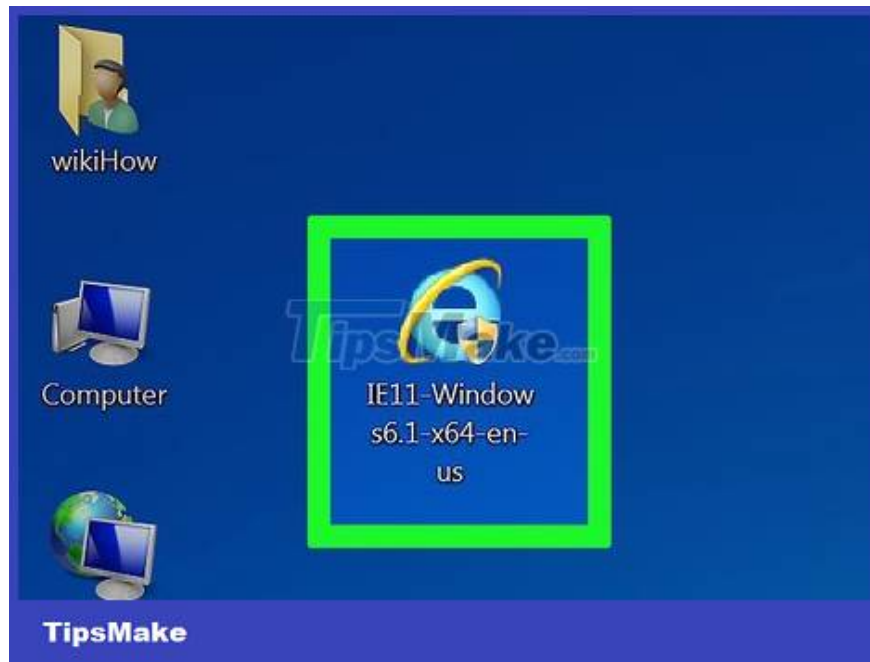
Scroll down to the language selection section. You will see a list of languages on the left side of the page.

dansk	Windows 7 SP1 32-bit Windows 7 SP1 64-bit Windows Server 2008 R2 SP1 64-bit
Nederlands	Windows 7 SP1 32-bit Windows 7 SP1 64-bit Windows Server 2008 R2 SP1 64-bit
English	Windows 7 SP1 32-bit Windows 7 SP1 64-bit Windows Server 2008 R2 SP1 64-bit
eesti	Windows 7 SP1 32-bit Windows 7 SP1 64-bit Windows Server 2008 R2 SP1 64-bit
suomi	Windows 7 SP1 32-bit Windows 7 SP1 64-bit

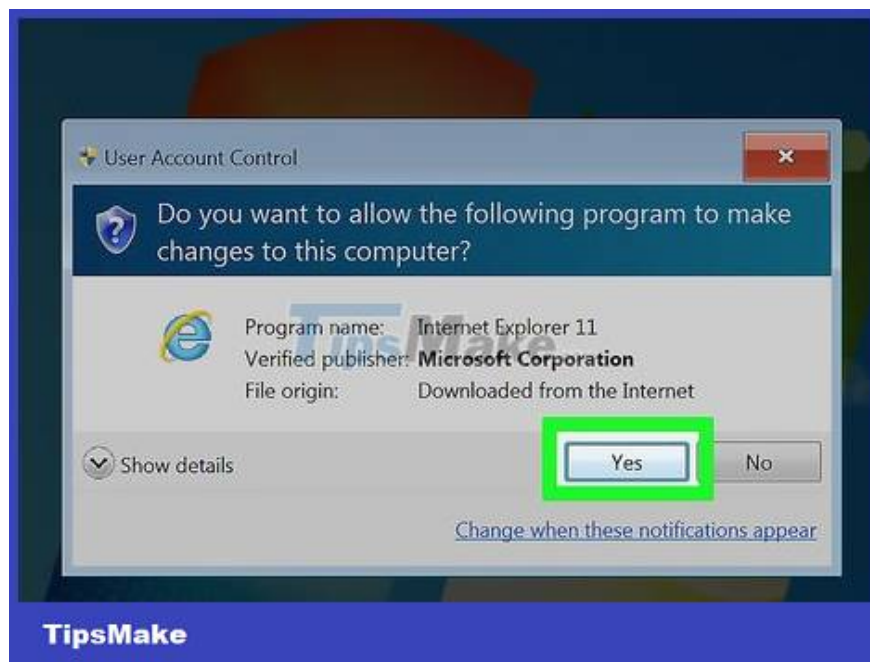
Click your operating system name. You will see your computer's operating system name displayed to the right of the selected language. Clicking on the link will start the process of downloading the installation file to your computer.

Windows 7 installation files still work on Windows 8.1 and Windows 10, as long as you choose the correct format for the version of Windows you are using, such as 32-bit or 64-bit.

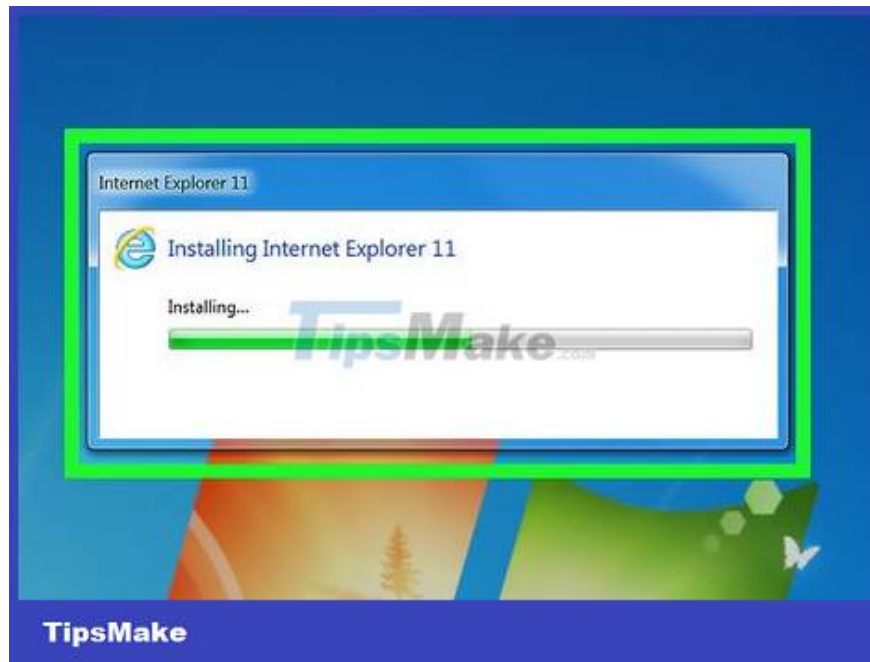
If you don't know your computer's bit number (32-bit or 64-bit), you can see the information by right-clicking This PC, clicking Properties, and looking at the bit number to the right of "System type" ( System type).



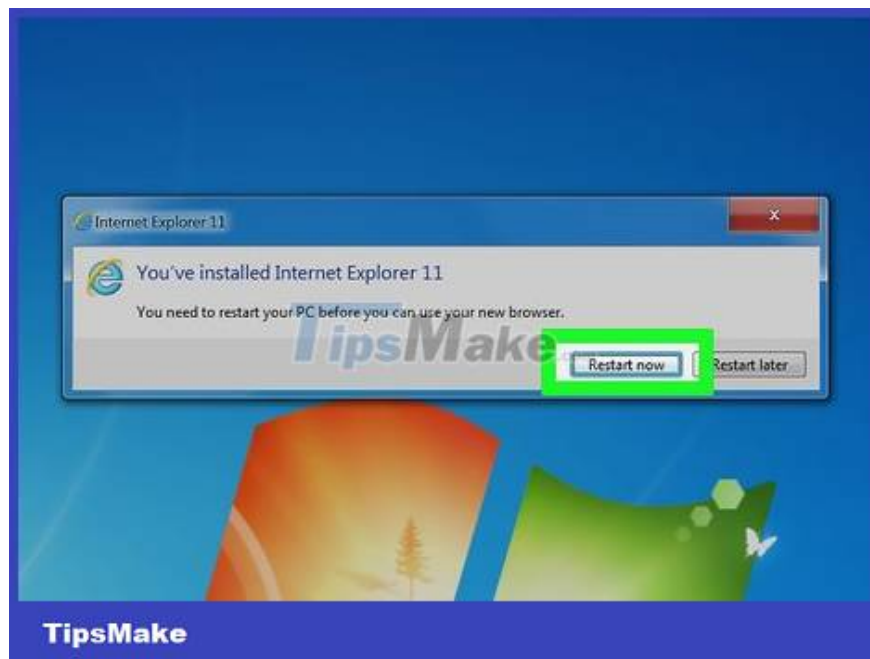
**Right click on the Internet Explorer settings icon.** This icon is often displayed on the desktop wallpaper.



**Click Yes when asked.** This will take you to the Internet Explorer settings window.

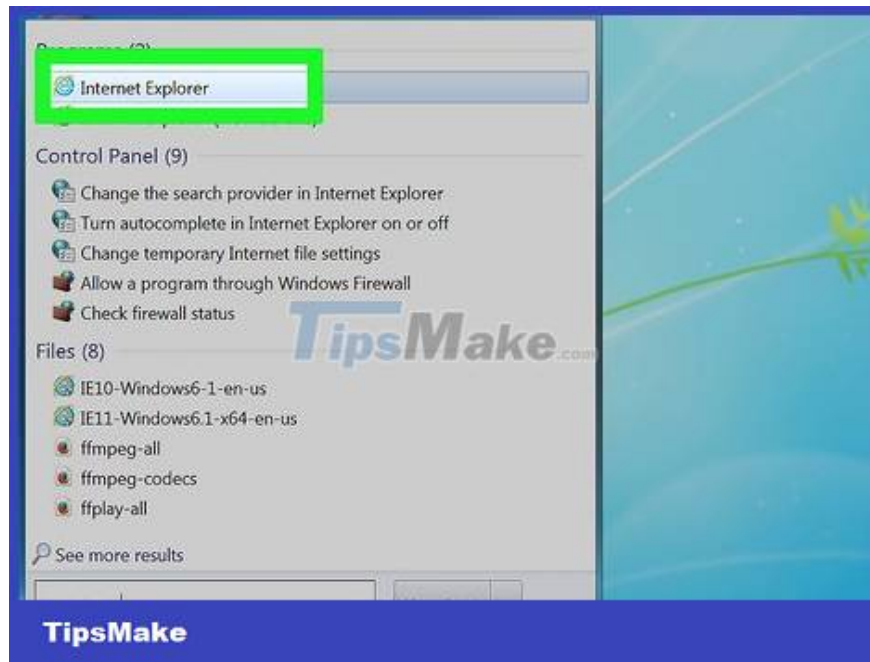


**Follow the instructions on the screen.** This includes agreeing to Microsoft's terms by clicking **I agree** , then selecting **Next** , selecting an installation location, and whether or not to create a program icon on the wallpaper .

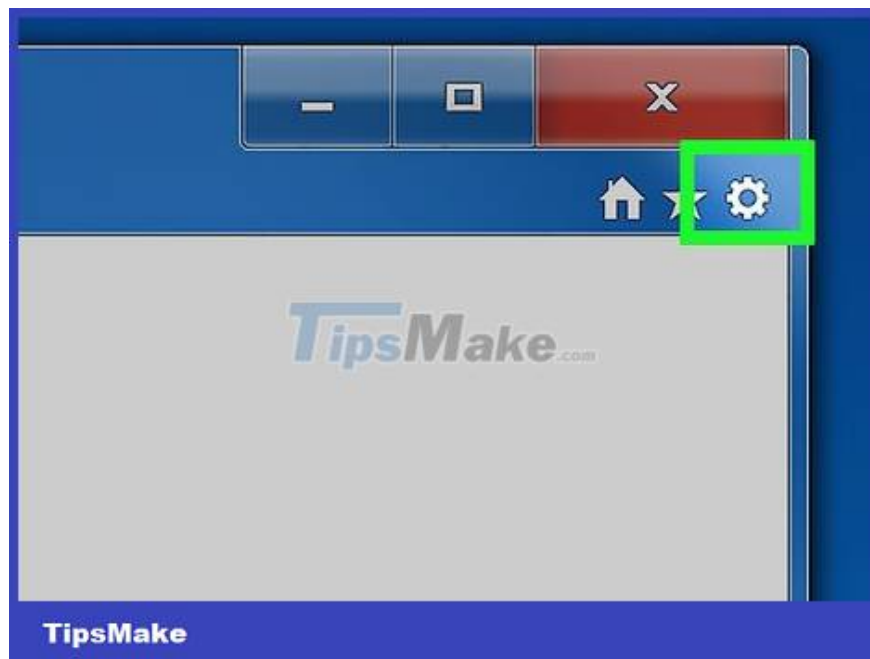


**Click Finish** . This is the option in the bottom right corner of the window. This will finish the Internet Explorer installation process.

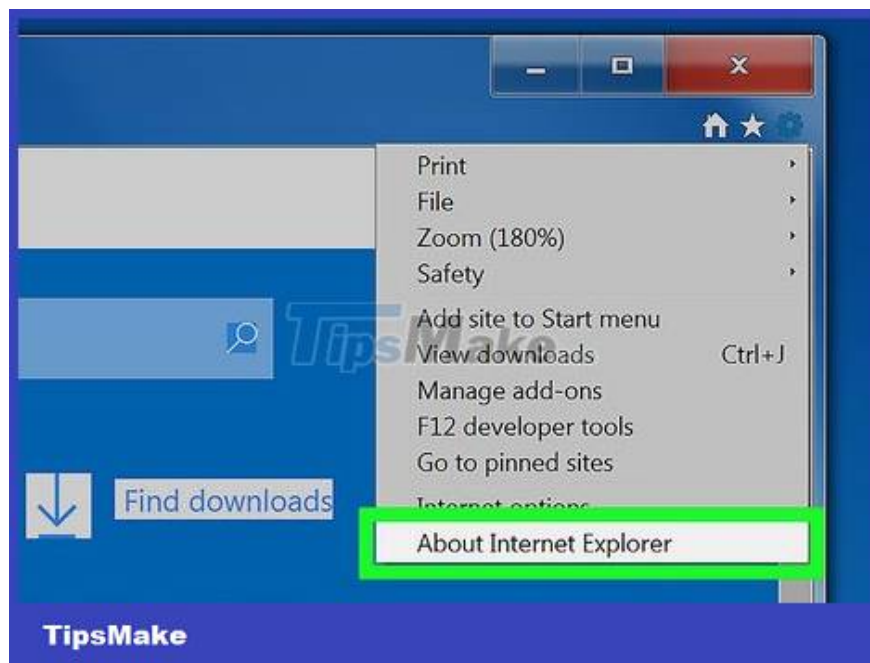
## **Enable updates for Internet Explorer 10**



**Open Internet Explorer.** It's the program with the blue "e" icon. You can also search by typing "Internet Explorer" into Start.



**Click ??** . This icon appears in the upper right corner of the Internet Explorer window.



**Click About Internet Explorer .** This is an option at the bottom of the menu that appears.

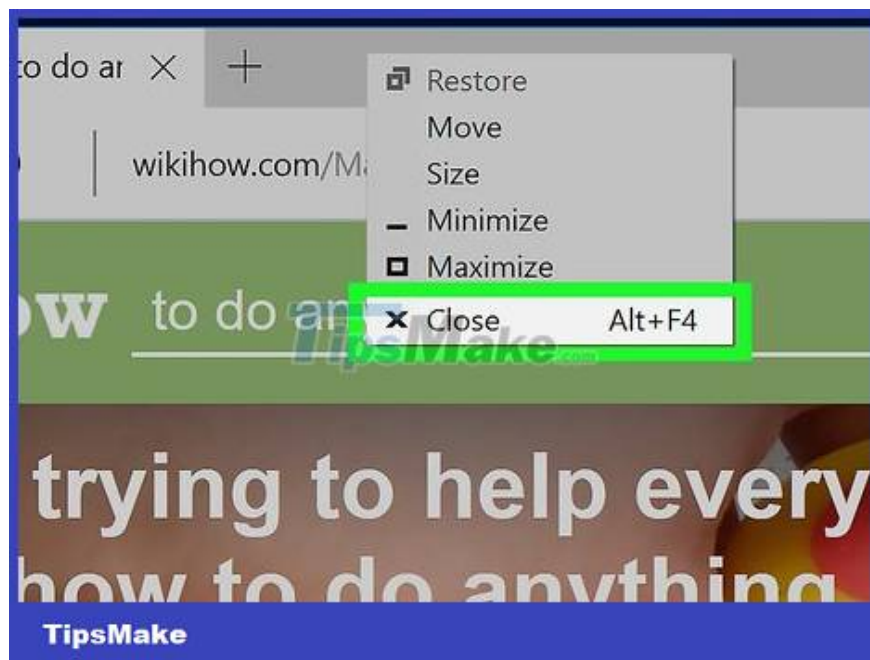


**Check the "Install new versions automatically" box.** You'll see this box in the middle of the About Internet Explorer window.

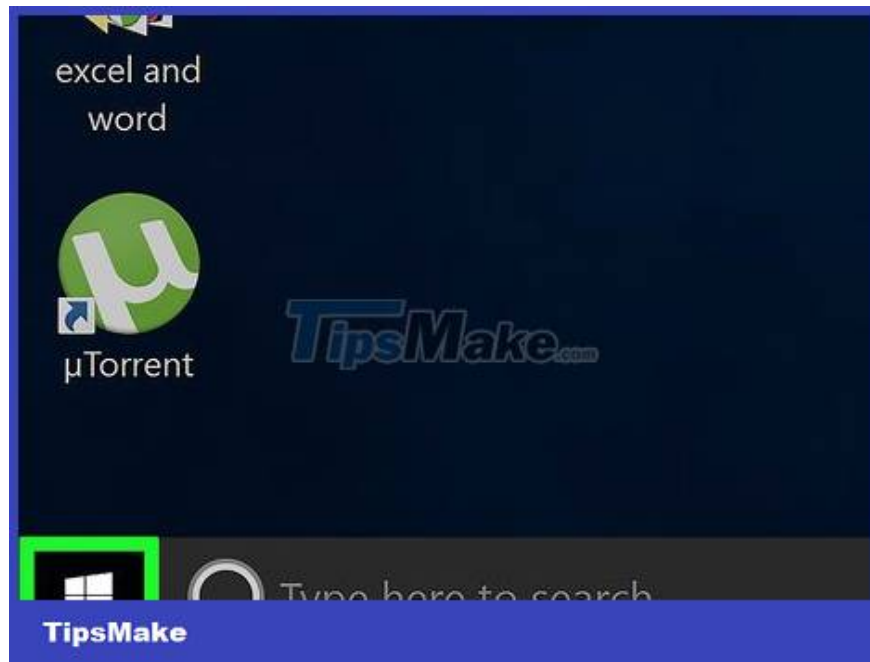


**Click Close** . This is the button that appears below the About Internet Explorer window. Thus, Internet Explorer browser will automatically update from now on.

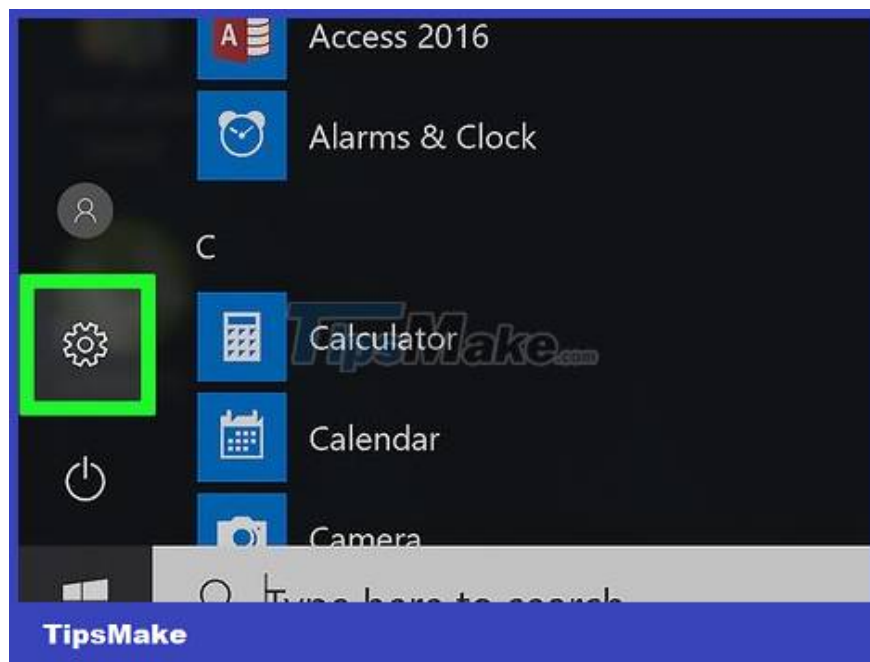
## Update Microsoft Edge



**Close Microsoft Edge if you are using this browser.** When Edge has a new updated version, the browser needs to be closed to complete the update process.



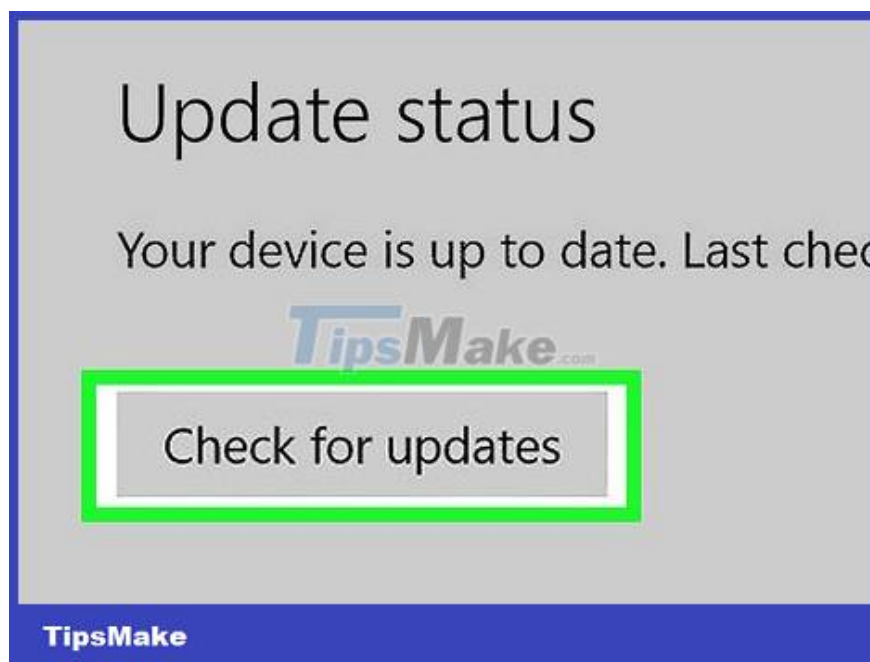
**Open Start.** You can click the Windows icon in the bottom left corner of the screen or press the key ? Win.



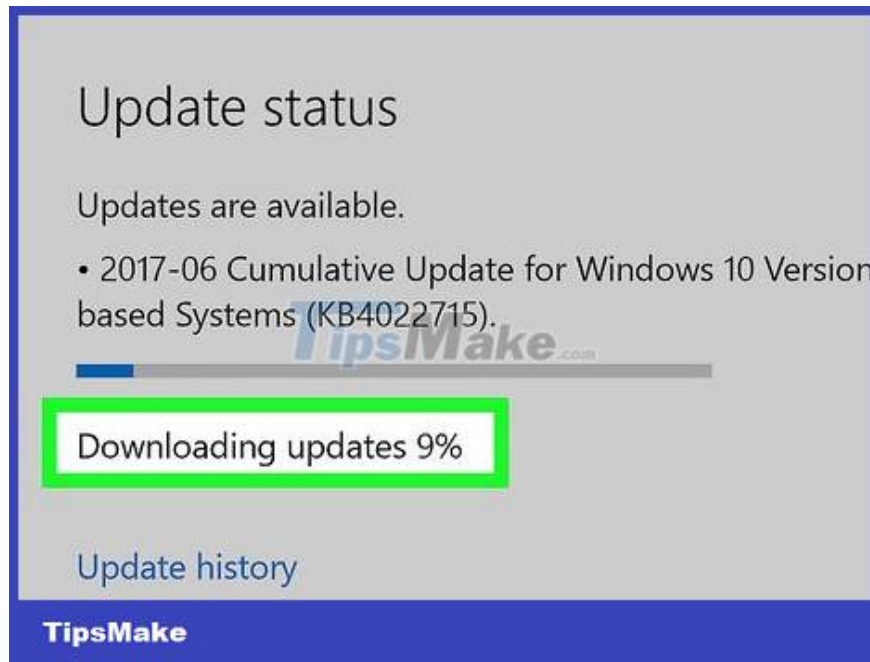
**Click ?? .** This is the icon in the lower left corner of the Start window. This will open the Settings page.



**Click Update & security** . You'll find this option near the bottom of the Settings page.



**Click Check for updates** . This is the button displayed near the top of the Update & Security page.



**Wait for the update process to complete.** Once you see the message "Your device is up to date" displayed at the top of the page, the Microsoft browser has been updated.

You finished reading the article "**How to Update Microsoft Internet Explorer**" edited by the [TipsMake](#) team. We hope this article has provided you with many useful tech tips and tricks. You can search for similar articles on tips and guides. Thank you for reading and for following us regularly.