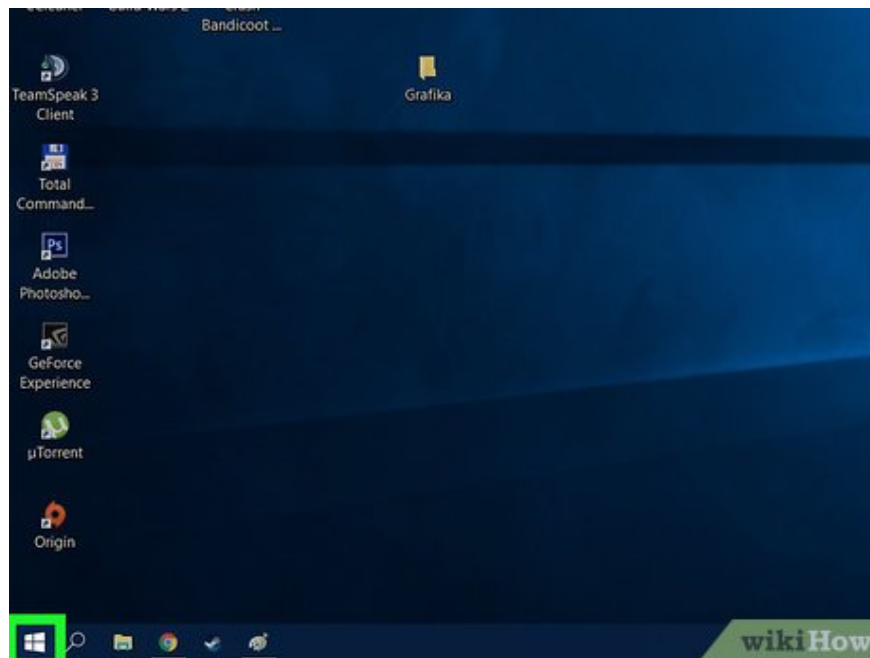


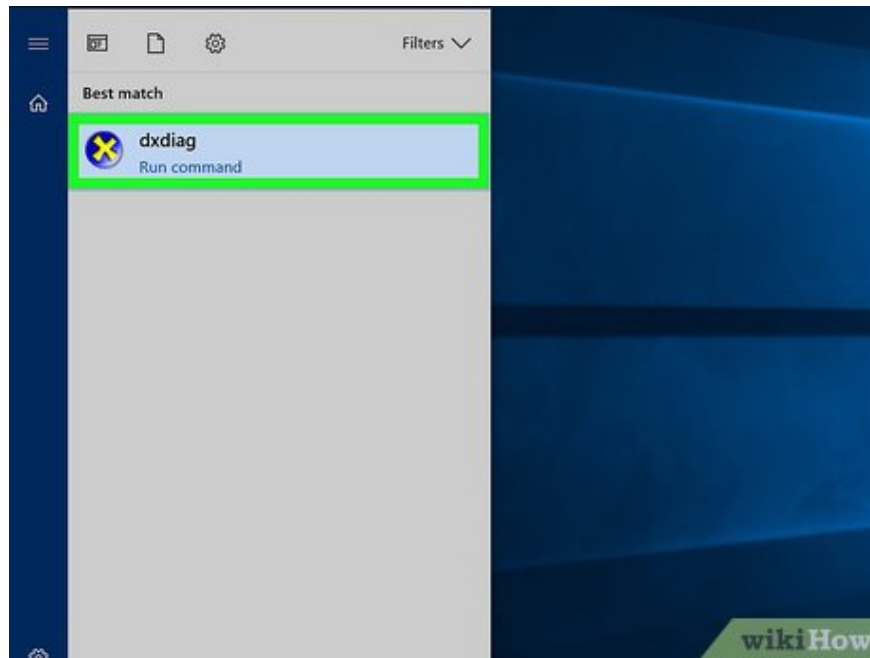
How to Update Graphics Card

This article shows you how to manually update the graphics card driver of your Windows computer. Although graphics card drivers are typically updated when a comprehensive update or patch is installed on the computer, some third-party graphics cards may not be supported. If the graphics card is damaged, you may need to install a new one to replace it. Unfortunately for Mac users, the only way to update the graphics card is to update the Mac operating system.

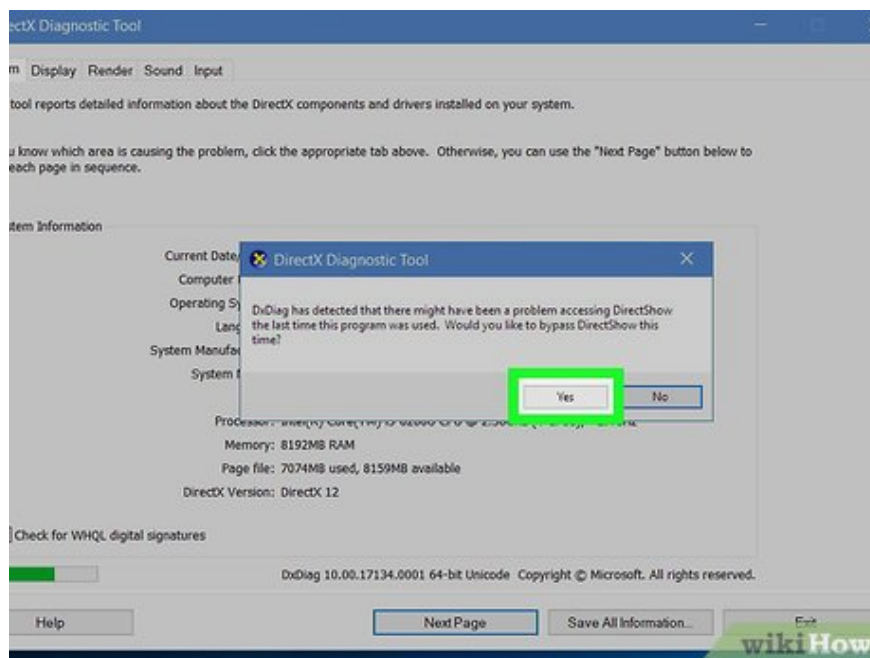
Search for the name of the graphics card



Open the Start menu. Click the Windows icon in the lower left corner of the screen.

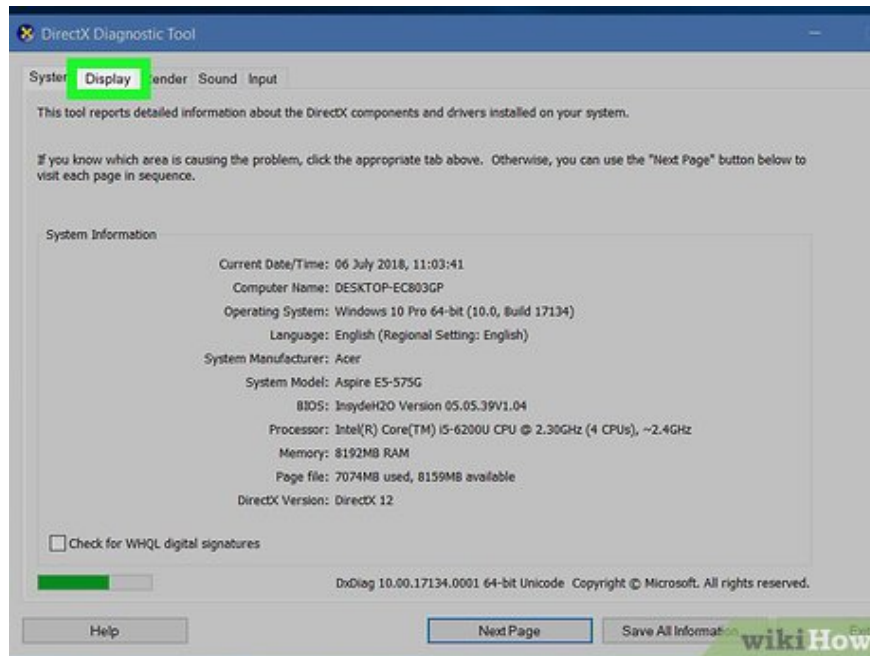


Run the DXDIAG command. Type `dxdiag`, then click the yellow-purple `dxdiag` icon at the top of the Start window.

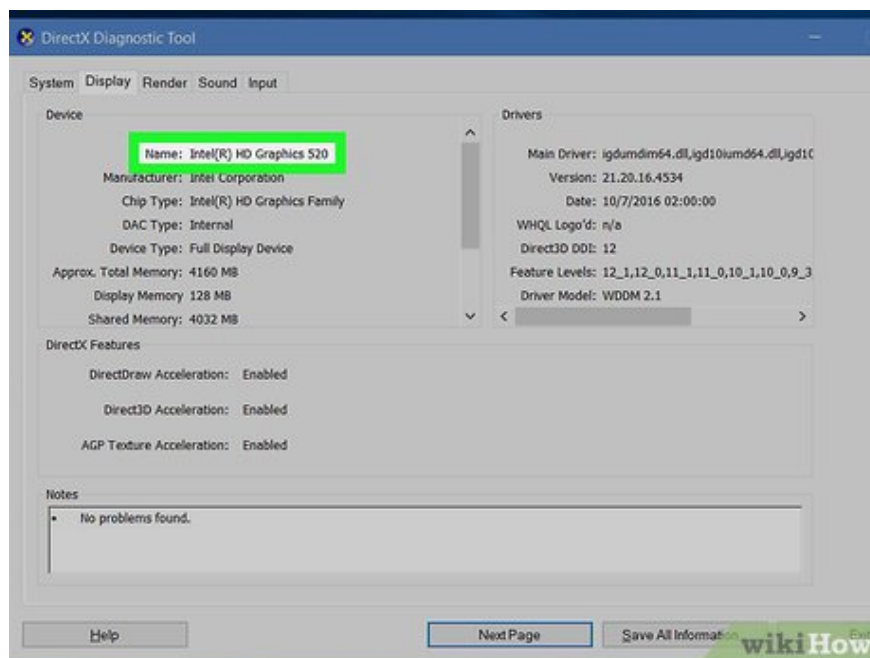


Click Yes when prompted. This step helps Windows determine the type of graphics card and open a new window.

The computer will probably try to connect to the Internet to see if your graphics card matches the others on the product page.



Click the **Display tab** . This tab is at the top of the window.



Search for the name of the graphics card. Look at the text written in the "Name" section at the top left of the window. This is the name of the graphics card recognized by the computer.

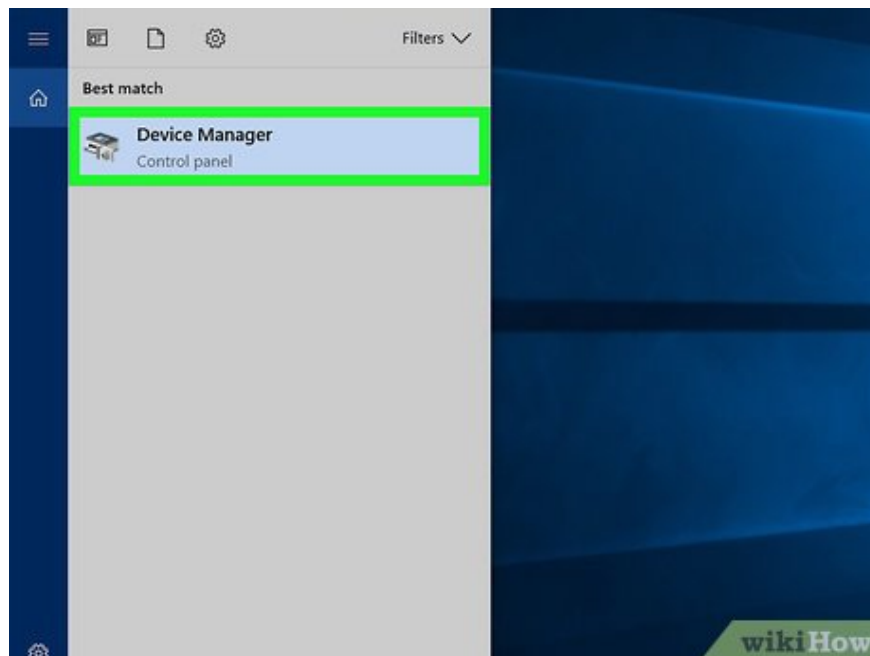
At this step, you can close the window.

Update your graphics card driver (Graphics Card Driver)

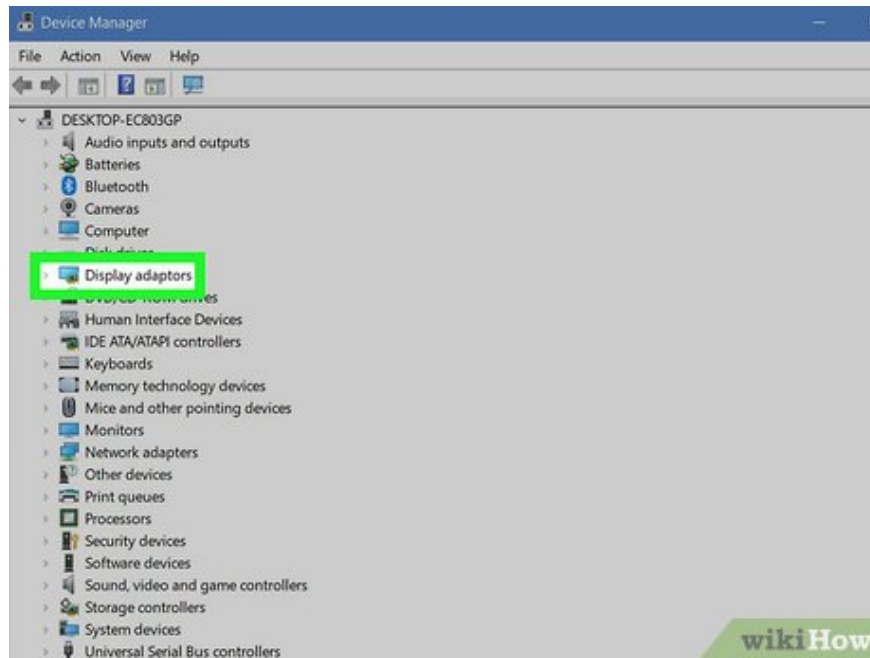


Open the Start menu. Click the Windows icon in the lower left corner of the screen.

You can also press ? Win+ Xto open the Start context menu and then click **Device Manager** in the menu. If you do this, skip to the next step.

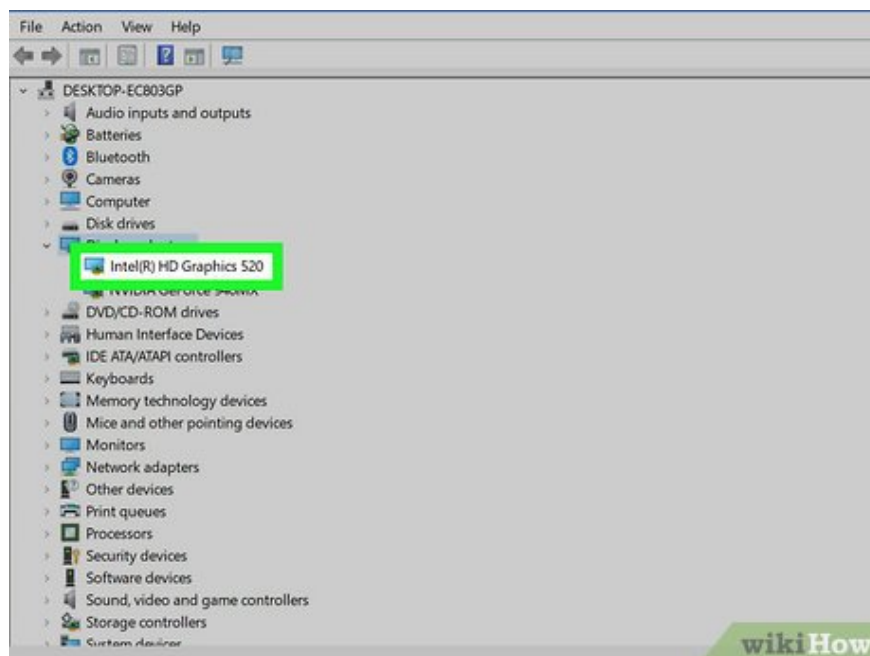


Open Device Manager. Type device manager, then click **Device Manager** at the top of the Start window.

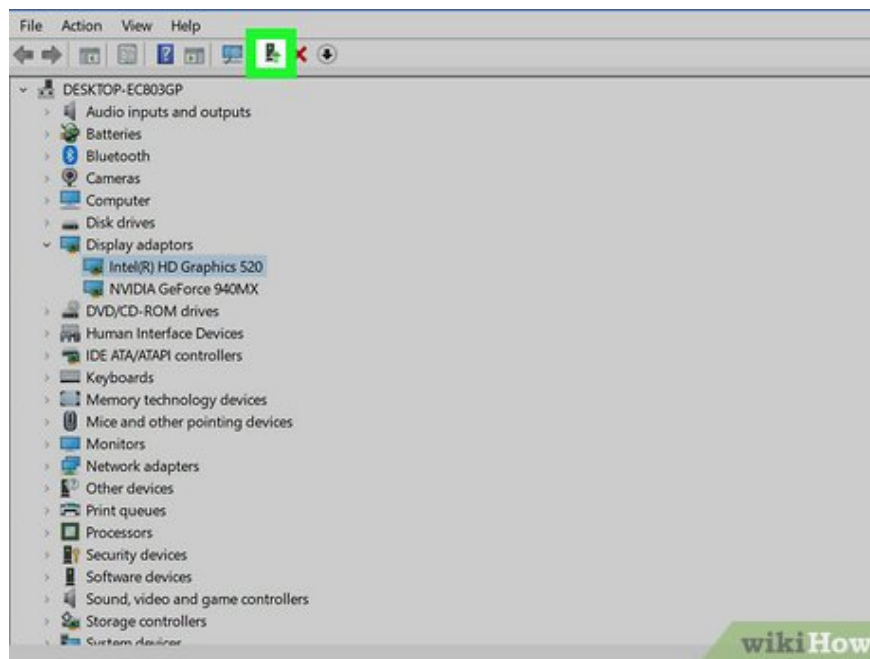


Expand the "Display adapters" section. Click the icon to the left of the text, or double-click the text. You will see many indented options appear below it.

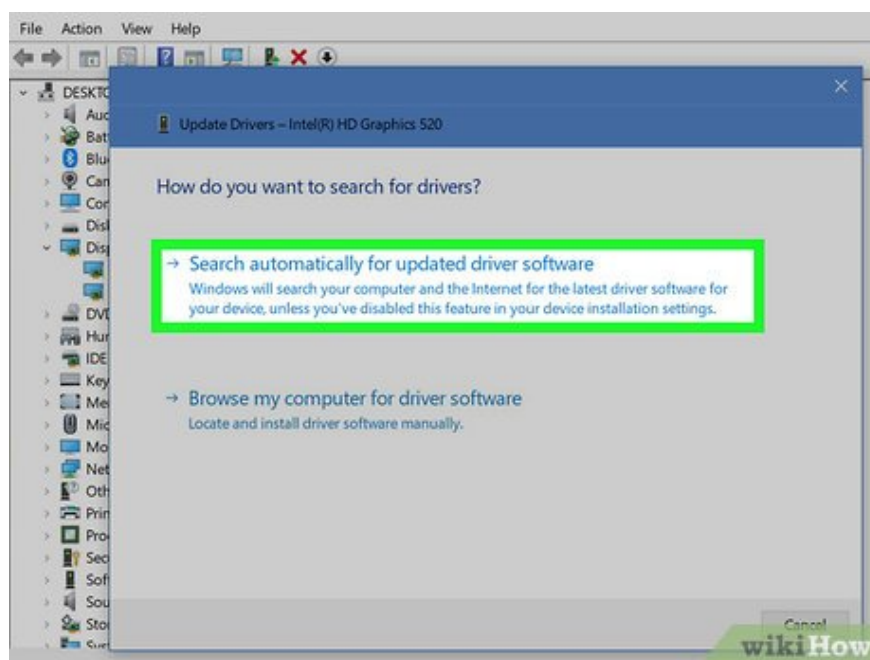
If under this text there are many indented options that look like a screen, it means it has been expanded.



Select graphics card. Click on the letter with the same name as your computer's graphics card to do this.

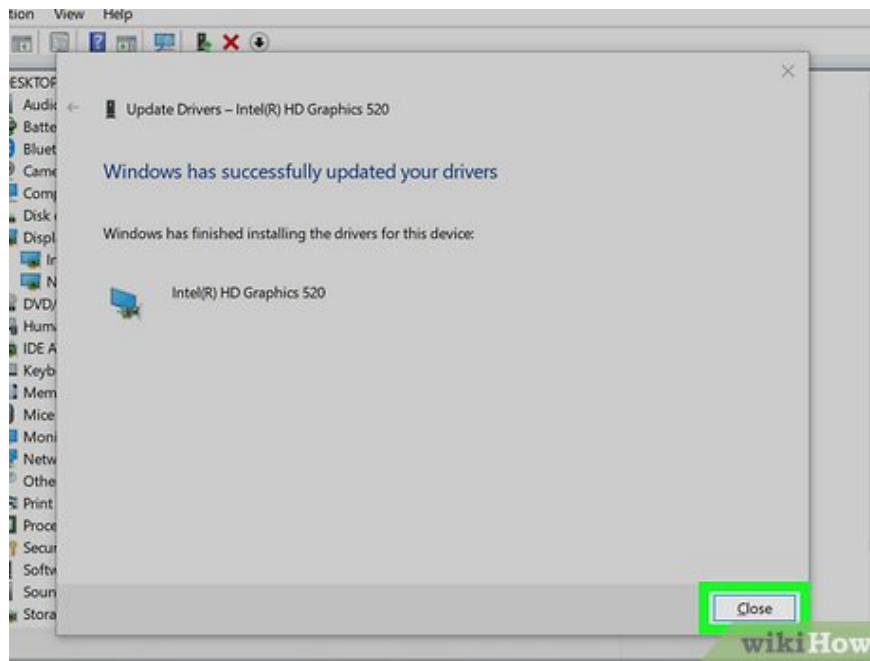


Click the "Update" button. This button looks like a black box with a green arrow pointing up at the top of the Device Manager window.



Click the words **Search automatically for updated driver software** . This option is at the top of the pop-up window. This is the step that requires the computer to start searching for drivers for the graphics card.

If Device Manager reports that the graphics card has been updated to the latest version, you can click **Search Windows Update** to see if a system update is available.



Enable graphics card updates. If a driver update is available, Device Manager will download and install it for you, but you may be asked to confirm this or click on a few options on the screen.

If you're using Windows Update, you'll need to allow the update to download, then install the update when prompted. Often this also updates other components of your computer's operating system, so you should be prepared to wait a long time for the update to complete.

You finished reading the article "**How to Update Graphics Card**" edited by the [TipsMake](#) team. We hope this article has provided you with many useful tech tips and tricks. You can search for similar articles on tips and guides. Thank you for reading and for following us regularly.