

How to update Driver using Device Manager for Windows 10 computers

Updating the Driver will help the computer hardware to communicate with the operating system much more smoothly. Click to see now 5 ways to update, update Driver for a simple Windows 10 computer!

Driver is important software that must be installed on the computer. This article will guide you how to update Driver on Windows 10 computer simply to optimize the process of using the device. Stay tuned!

1. When should I update drivers for my computer?

1. Your computer has some problems such as not being able to connect to WiFi networks, USB, headphones, or losing some features when using.
2. Computer used for a long time but the driver has not been updated.
3. Update Driver for the computer when needed

2. Notes when updating Driver

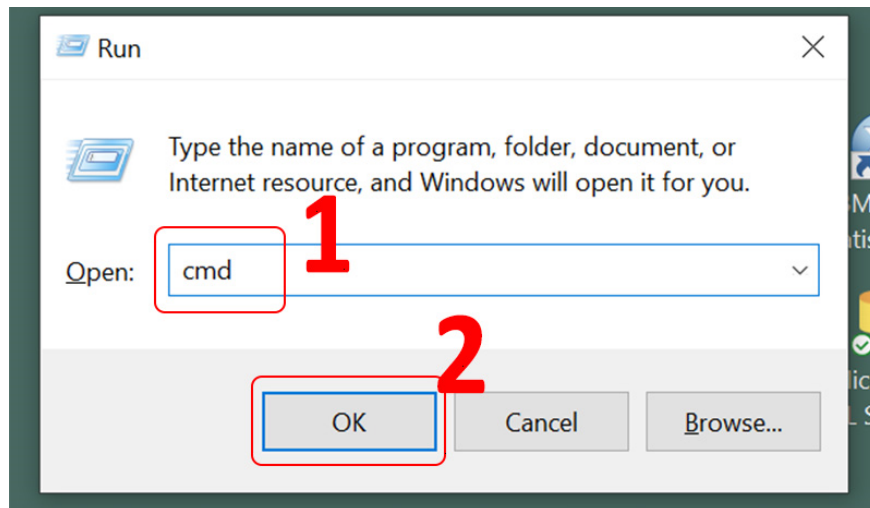
1. Update the driver only when there is a problem with the device connections.
2. Driver updates may be ineffective for the purpose of speeding up your computer.
3. If the computer is fine, you do not need to upgrade the Driver.
4. Need to use the appropriate driver for the computer, not always the latest version is suitable for the machine.
5. There is no need to use a shared Windows Driver while you can use its own Driver.
6. It is not recommended to use automatic driver update software because it can install drivers that are not suitable for the machine.



3. How to update Driver for Windows 10 computers

3.1. Update Driver Windows 10 using the command

Step 1: Press Windows + R key combination> Type 'cmd' in the box Open> Select OK.



Step 2: Enter the command 'driverquery'> Press Enter.

At this time, the computer will display the installation time of each device. If any device has been installed for too long, you should update the driver for that device.

```
C:\WINDOWS\system32\cmd.exe
Microsoft Windows [Version 10.0.19042.928]
(c) Microsoft Corporation. All rights reserved.

C:\Users\MSI>driverquery

Module Name      Display Name      Driver Type      Link Date
=====
1394ohci         1394 OHCI Compliant Host Controller Driver
3ware            3ware             Kernel           19/05/2015 05:28:03
ACPI             Microsoft ACPI Driver
AcpiDev         ACPI Devices driver
acpiex          Microsoft ACPIEx Drive
acpipagr        ACPI Processor Aggregator
AcpiPmi         ACPI Power Meter Drive
acpitime        ACPI Wake Alarm Driver
Acx01000        Acx01000          Kernel
ADP80XX         ADP80XX           Kernel           10/04/2015 03:49:48
AFD             Ancillary Function Driver
afunix          afunix            Kernel
```

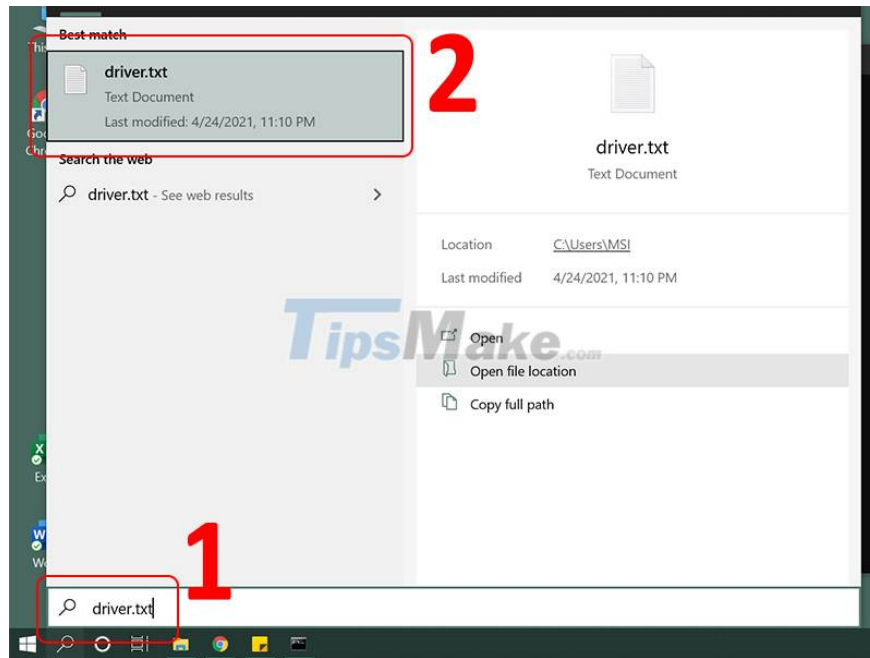
Step 3: Type 'driverquery> driver.txt' to export the file list.

```
C:\WINDOWS\system32\cmd.exe
Microsoft Windows [Version 10.0.19042.928]
(c) Microsoft Corporation. All rights reserved.

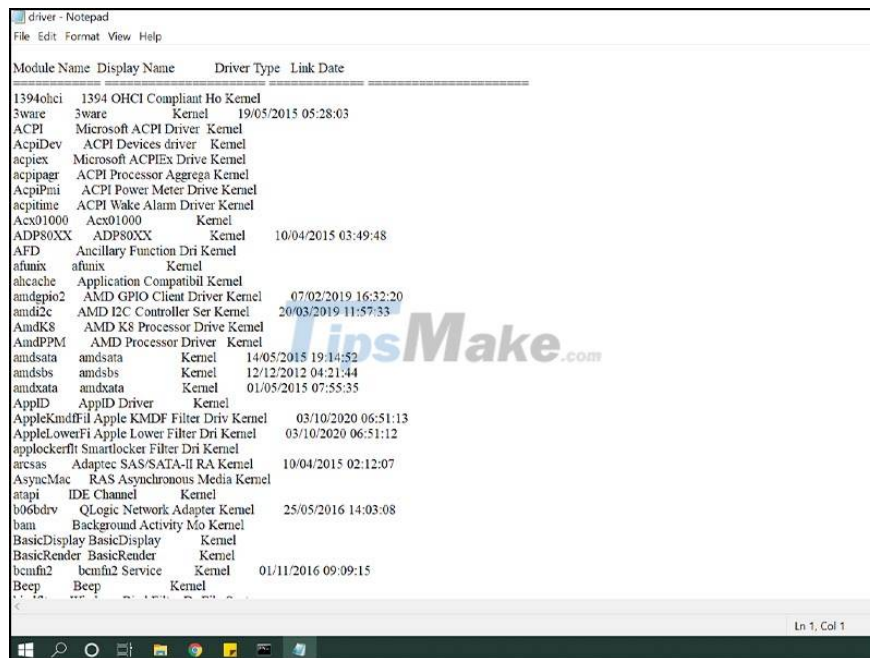
C:\Users\MSI>driverquery> driver.txt

C:\Users\MSI>
```

Step 4: To review the file, select the icon Search> Search for the name of the file 'driver.txt'> Click to select the file to open.



Then you will see the details of the updated Driver files.

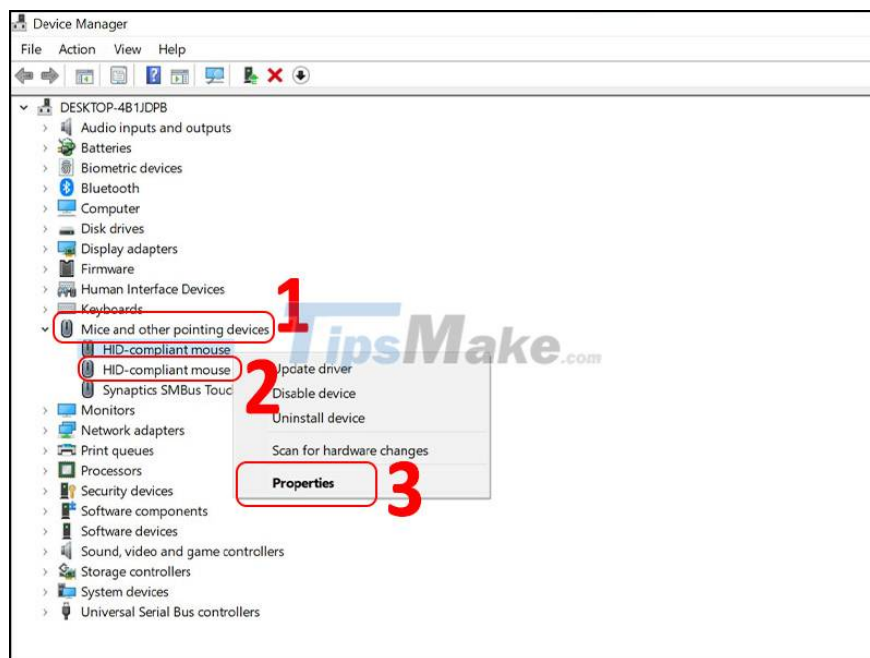


3.2. How to update Driver using Device Manager

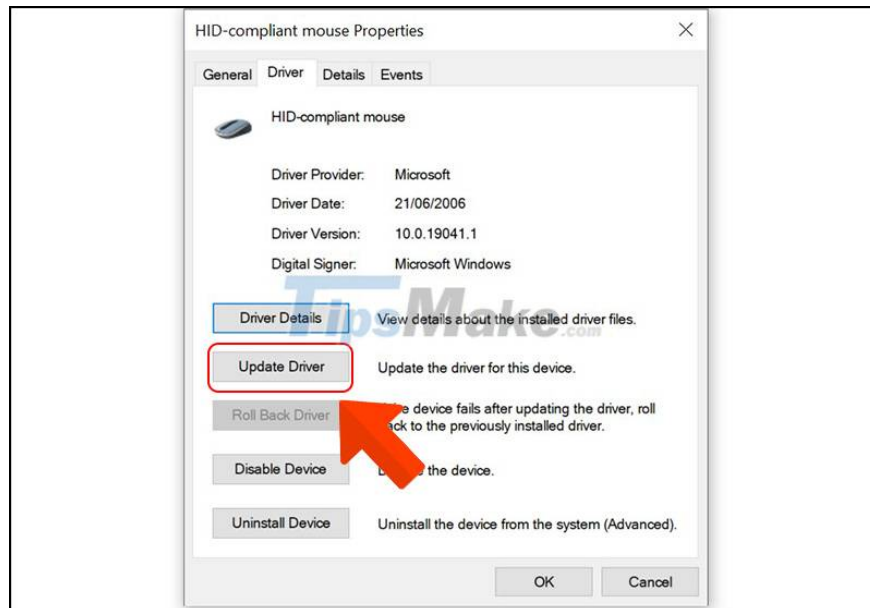
Step 1: Select the Search icon> Type 'device manager'> Select Device Manager.



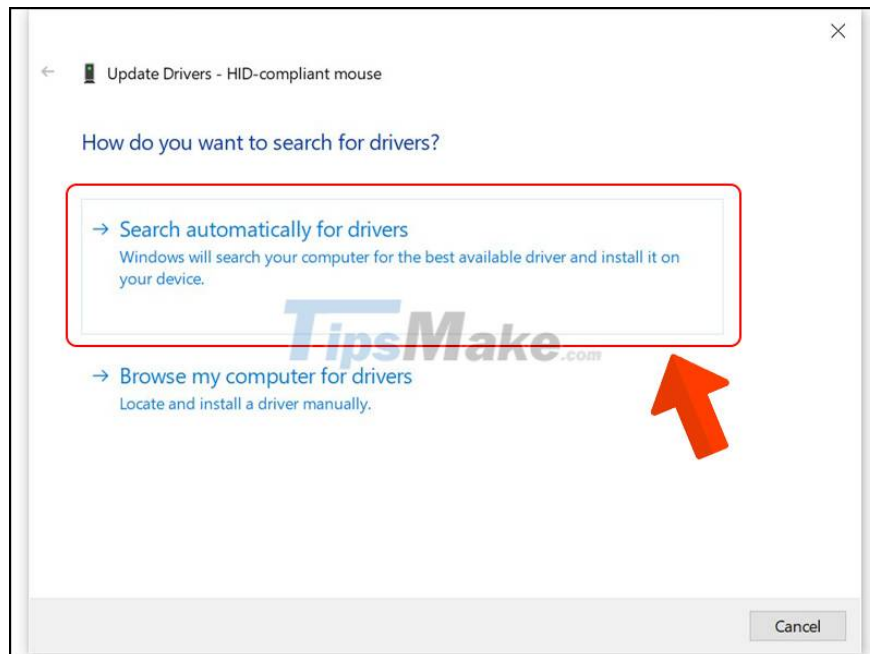
Step 2: Select a device to update> Right-click on the specific device> Select Properties.



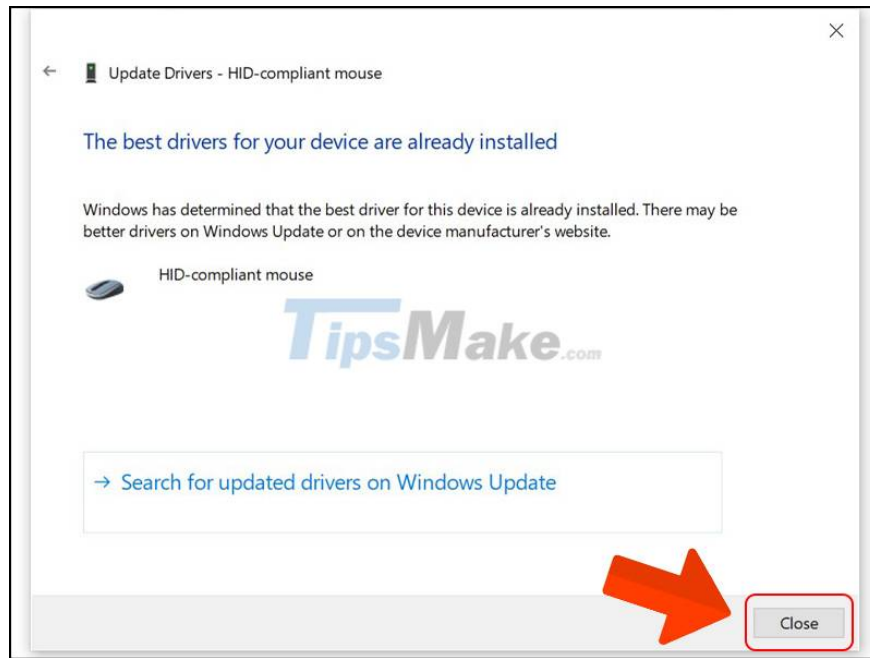
Step 3: Click on Update Driver.



Step 4: Select Search automatically for drivers.

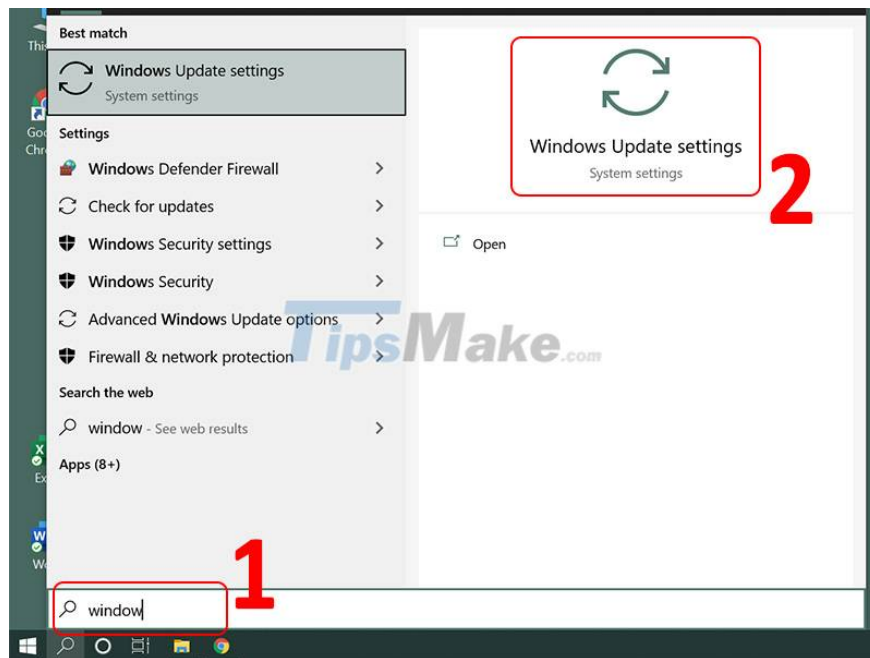


Step 5: Wait for the computer to search and update is complete> Click on Close.

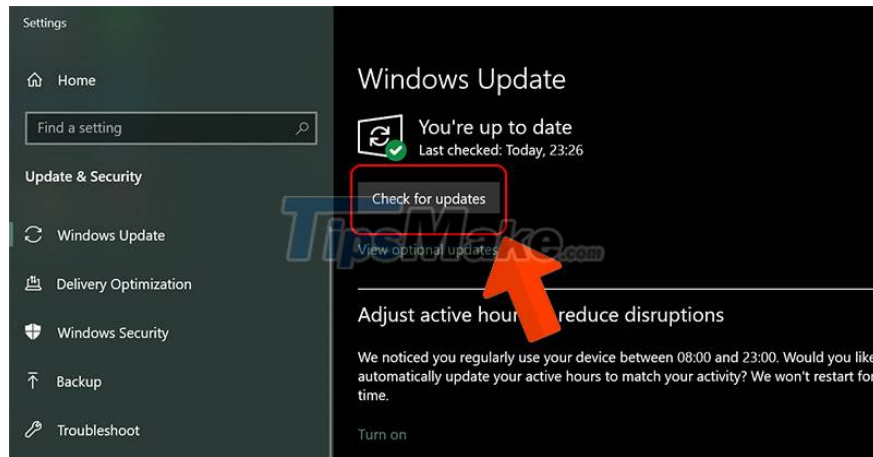


3.3. How to update Driver using Windows Update

Step 1: Search for 'windows update'> Select Windows Update settings.



Step 2: Click on Check for updates.



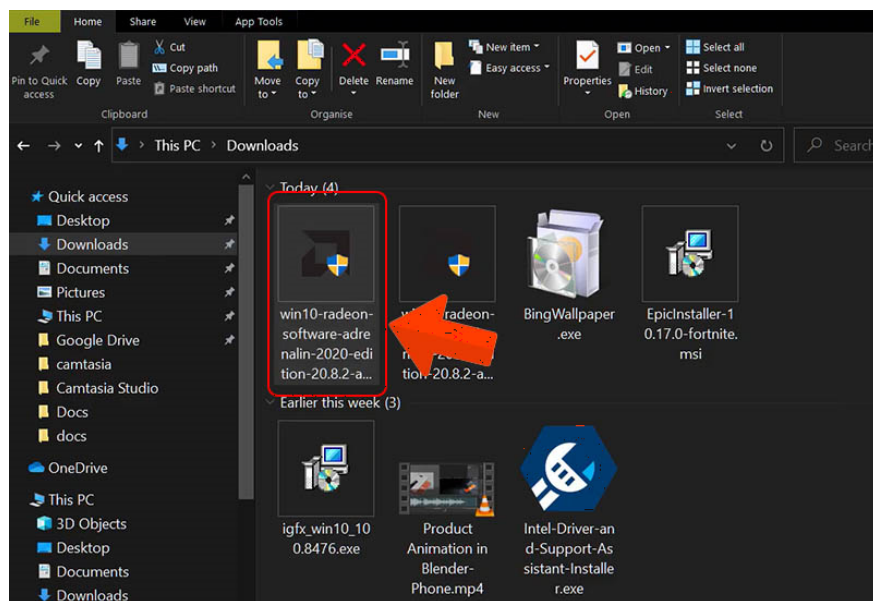
3.4. How to update the Driver through the manufacturer's website

Update Driver for AMD graphics card

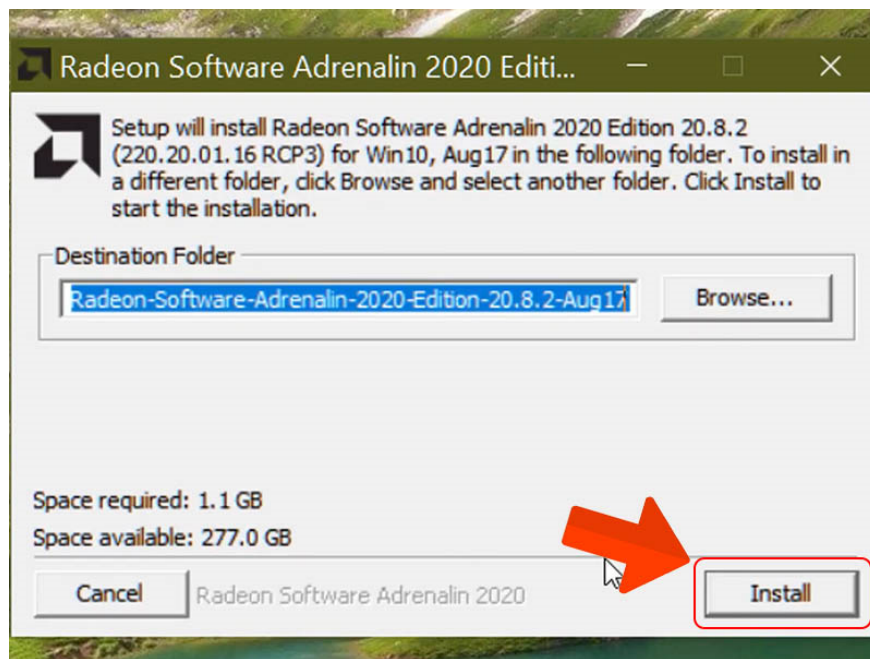
Step 1: Check your computer's parameters.

Step 2: Access the link [here](#) to download the appropriate AMD Driver version for your computer.

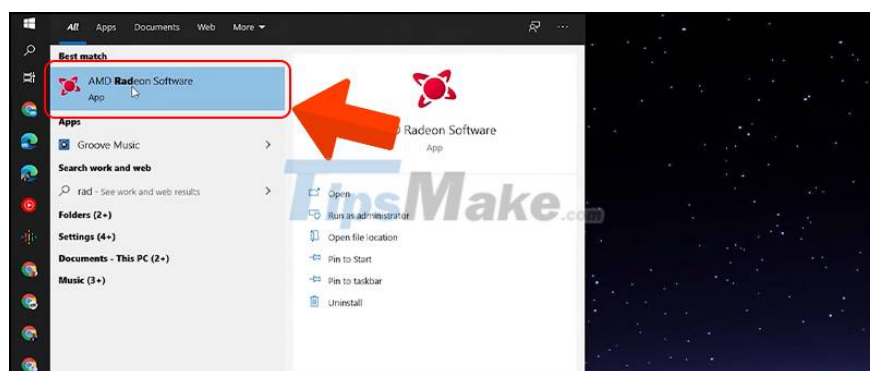
Step 3: Open the downloaded file.



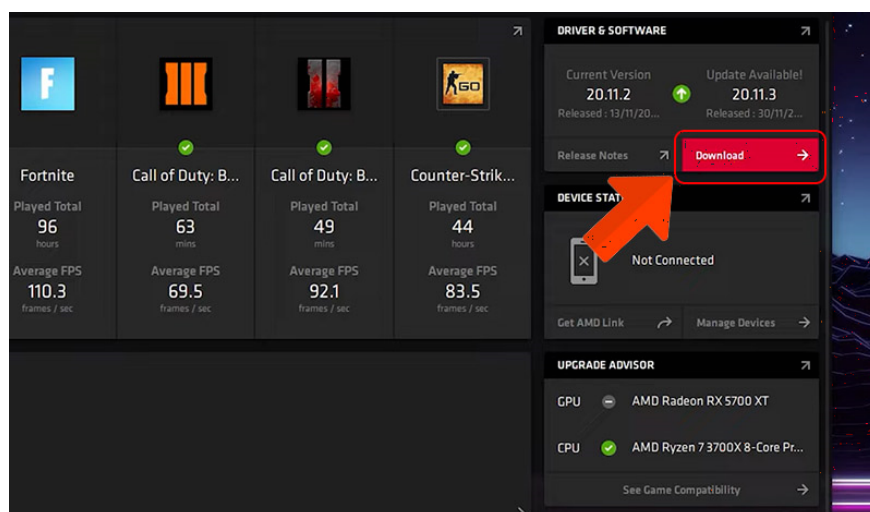
Step 4: Select Install.



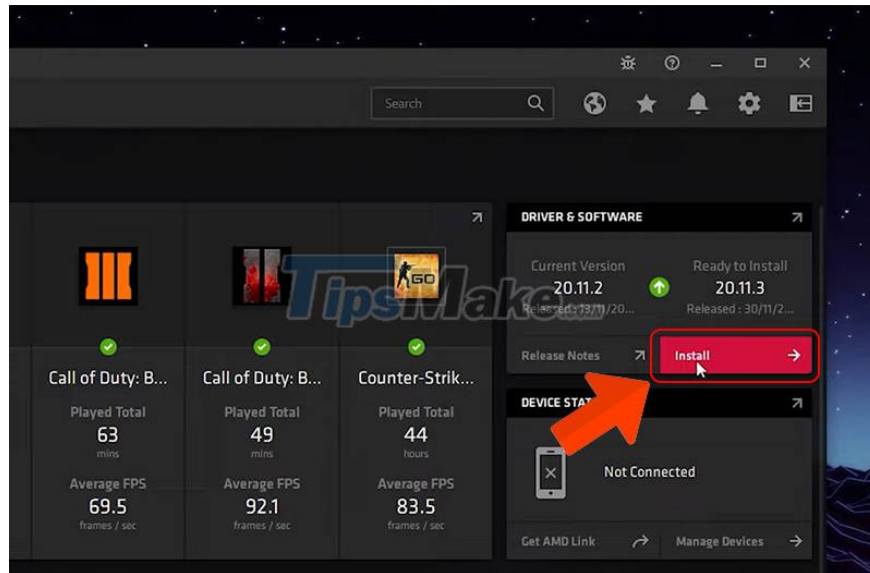
Step 5: Open AMD Radeon Software application.



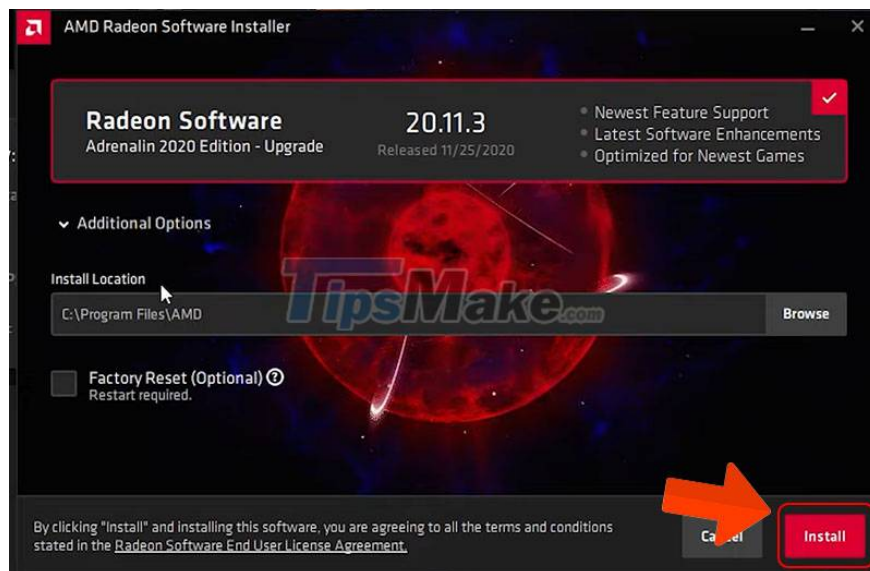
Step 6: Select Download.



Step 7: Select Install.



Step 8: Select Install and wait for the application to update Driver for the computer.



- Update Driver for NVIDIA graphics card

Step 1: Check the computer model.

Step 2: Visit the link [here](#) to download NVIDIA Driver updates to your computer.

Step 3: Fill in your computer's information so the website can suggest suitable updates> Select Search.

NVIDIA Driver Downloads

Advanced Driver Search 1

Product Type:

Operating System:

Product Series:

Language:

Product:

Recommended/Beta: ?

2

Click the Search button to perform your search.

Step 4: Click Download.

QUADRO DESKTOP/QUADRO NOTEBO

Version: R450 U1 (451.48) ^{WHQL}

Release Date: 2020.6.24

Operating System: Windows 10 64-bit

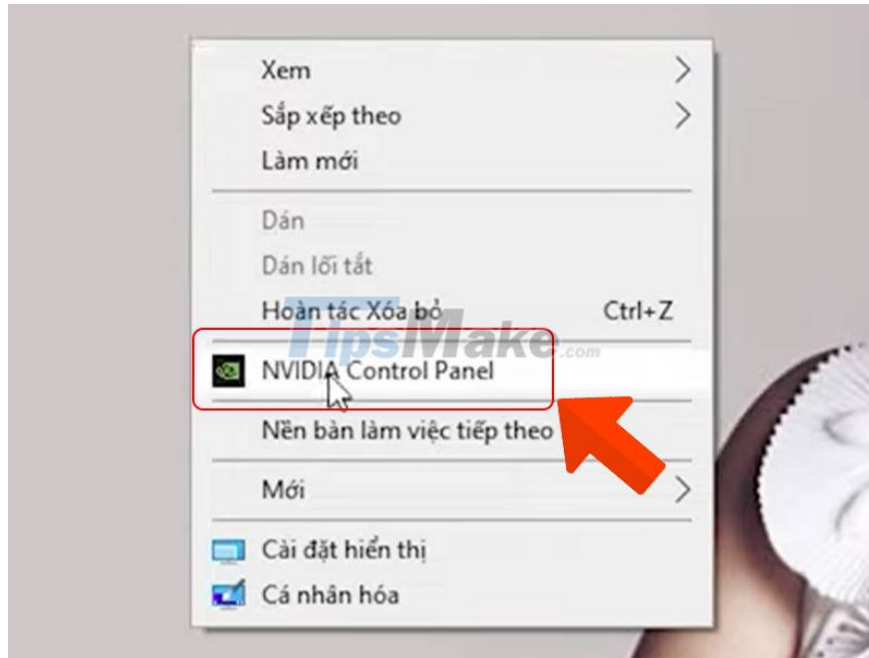
Language: English (US)

File Size: 382.34 MB

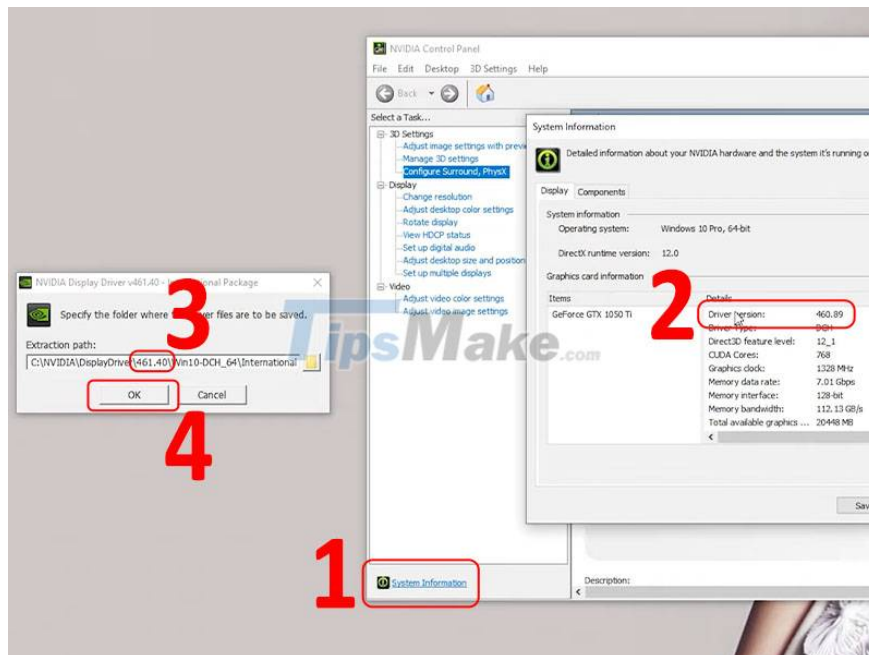
[RELEASE HIGHLIGHTS](#) [SUPPORTED PRODU](#)

Release 450 is an 'Optimal Drivers for Enterprise' (ODE) branch release that provides long-term stability and availability, making drivers from the

Step 5: After downloading, check which version of your computer's Driver is by right-clicking on the screen> Select the application name NVIDIA Control Panel.



Step 6: Select System Information > Check Driver version parameters (in this article, version 460.89) > We can see that the Driver version we downloaded is 461.40 (newer version of the computer) > Click OK to update.

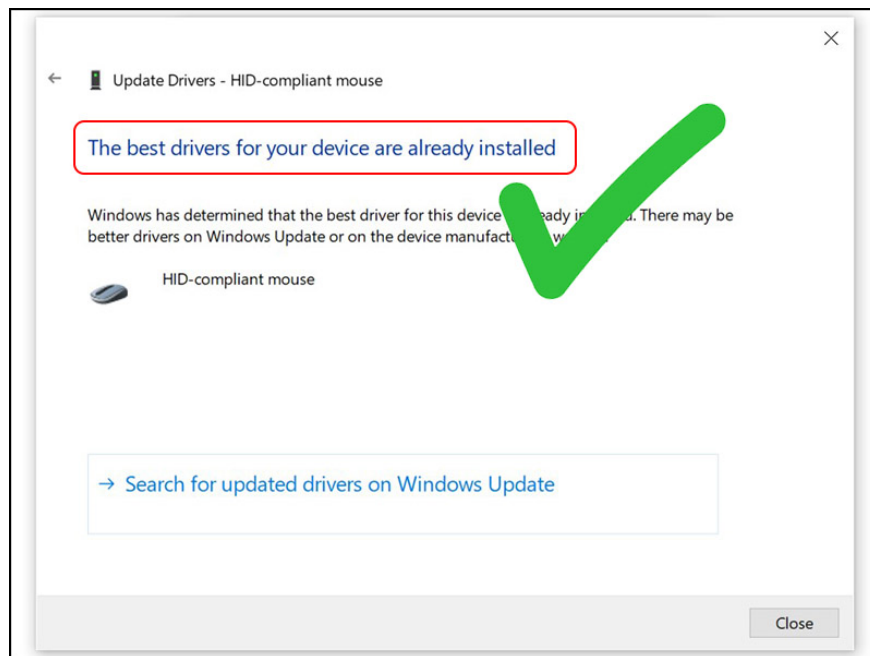


3.5. Using software to update, update Driver for Windows computers

Compared to updating on the computer, the Driver update applications will have many functions and uses to help you save time and discover more interesting functions.

4. How to check whether the Driver has been successfully updated on Windows 10 or not

- After you perform the update, the computer says The best drivers for your device are already installed, which means that the latest Driver has been installed on your computer, you have successfully updated Driver.
- Besides, when you see your computer's problems (heard the sound again, reconnected to Wifi, .) which has been successfully fixed, it also means that the Driver is successfully updated. .



5. Answer some questions related to updating Driver

For the way to update the Driver manually, should I download all the Drivers according to the machine configuration or should I just download the necessary drivers (chipset, network, sound .)?

Answer: You should fully install the Drivers because sometimes we need to connect a printer or a new device, then if the Driver is not installed, you will be confused to find out the cause of the problem, delay. Work. So, please install all the drivers always!

Driver has already installed enough steps manually, then need to reinstall by automatic installation?

Reply:

- If you are sure that you have fully installed the Driver manually then you may not need to install Driver by automatically again!

However, if you are still not confident enough about your ability to install Driver, you should choose to install automatically from the beginning to avoid losing time.

How do I know if the Driver has been installed enough?

Answer: If a device driver has not been installed, the computer will show an exclamation mark on that device when you check it in Device Manager, now please install more for a more comfortable computer experience.

If the Driver is installed is identical, will the computer notify?

Reply:

- If you install the same driver, the computer will not notify, the computer will still install duplicate.
- When you discover duplicate drivers installed, you should delete the duplicates, keep only one version!

You finished reading the article "**How to update Driver using Device Manager for Windows 10 computers**" edited by the [TipsMake](#) team. We hope this article has provided you with many useful tech tips and tricks. You can search for similar articles on tips and guides. Thank you for reading and for following us regularly.