

# How to update ATI Card, Update the latest ATI Driver

Updating ATI card driver is an important step to increase graphics performance, support smoother gaming and fix software errors. If you do not know how to update the latest ATI driver, this article will guide you in detail on how to do it.

Updating the ATI card driver helps improve graphics performance and fix crashes. You can download the latest AMD Radeon driver from the AMD website or use the automatic update software.

## Instructions for Updating ATI Graphics Card Driver

*Step 1* : You need to determine the model number of the ATI card you are buying.

As shown in the picture, this is the **HD 7970** card . For laptop users, you can see the card code in the laptop's specifications.



*Step 2* : Download the latest **Driver** version for your computer.

Go to <http://support.amd.com/en-us/download> **Here** and fill in the information in lines 1 to 4 on the screen.

- **Line 1**: Select **Desktop Graphics** if it is a desktop discrete card, **Notebook Graphics** if it is a laptop discrete card.

- **Line 2** : Select **HD Series** if your ATI card contains the word **HD**, for example **HD 6670, HD 7750**
- **Line 3** : Choose **7xxx** if it is **7750,7770** or **6xxx** for example **6670...**
- **Line 4** : Select operating system.

Below are my machine's specs, so I'll select the following items:

**Step 1:** Select the type of system that you have:

Desktop Graphics

**Step 2:** Select the product family your product belongs to:

Radeon HD Series

**Step 3:** Select your product:

Radeon HD 5xxx Series PCIe

**Step 4:** Select the supported operating system that you have:

Windows 7 - 64 Bit

**Step 5:** **DISPLAY RESULTS**

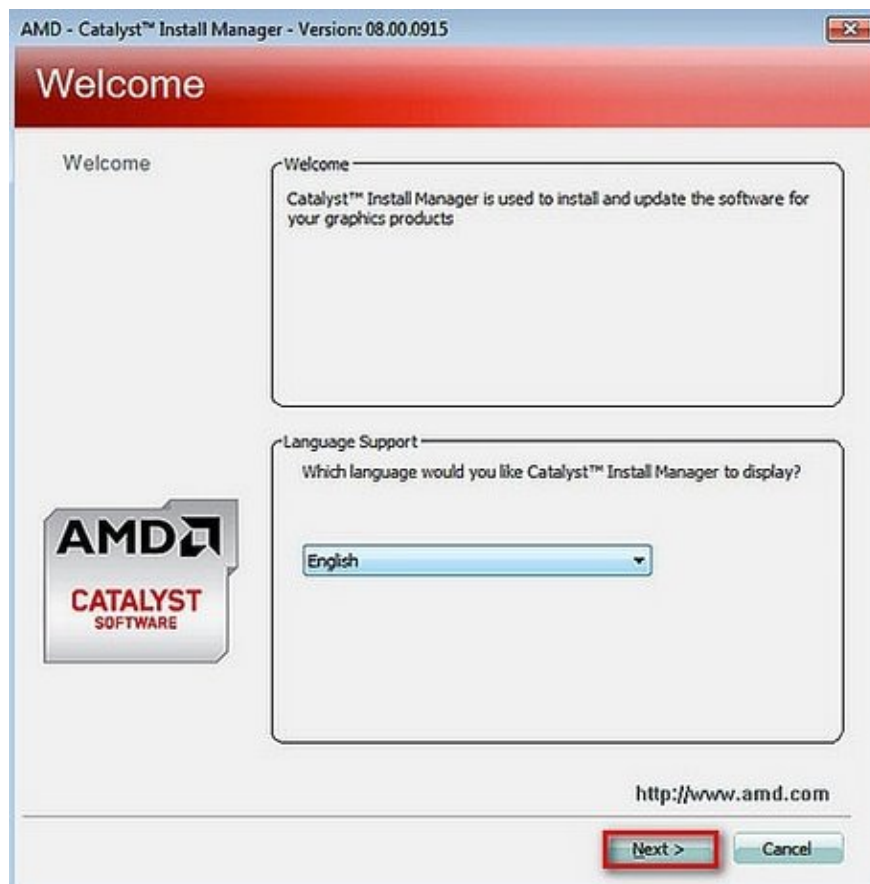
Next, click on **Display Result** and a new page will appear. Click download **Lastest Beta Driver**.

**Description:**  
 Package contains the following graphics drivers and dependent/required software for the products specified in the current version's official release notes for the 64 bit version of Windows 7, Windows 8 and Windows 8.1:  
 Display Driver ver. 13.251  
 OpenCL(tm) Driver ver. 10.0.1348.5  
 Catalyst Control Center ver. 2013.1206.1602.28764

**Languages:**  
 Czech, Danish, German, Greek, US English, Spanish, Finnish, French, Hungarian, Italian, Japanese, Korean, Dutch, Norwegian, Polish, Portuguese, Russian, Swedish, Thai, Turkish, Chinese (Traditional), Chinese (Simplified).

|                           |        |            |           |                 |
|---------------------------|--------|------------|-----------|-----------------|
| <b>Latest Beta Driver</b> | 241 MB | 13.11 Beta | 12/3/2013 | <b>Download</b> |
|---------------------------|--------|------------|-----------|-----------------|

After downloading and installing, the program interface is as follows:



Just click **Next** , select **Install** and the program will run automatically. When it's done, just restart your computer.

After performing the above steps, you have completed updating the ATI card driver to the latest version, helping to improve graphics performance, minimize errors and optimize the experience when playing games or working with design software. If you encounter problems during the update process, you can use the driver update support tool or visit AMD's homepage to download the version suitable for your computer configuration.

You finished reading the article "**How to update ATI Card, Update the latest ATI Driver**" edited by the [TipsMake](#) team. We hope this article has provided you with many useful tech tips and tricks. You can search for similar articles on tips and guides. Thank you for reading and for following us regularly.