

How to uninstall the driver completely on Windows

To avoid problems and dead blue screen errors, you need to delete the failed driver, causing problems. This article will show you how to uninstall the driver completely on Windows.

Driver is an important component because without it you will not be able to fully use Windows devices and computers. However, some drivers may be old and incompatible with your version of Windows or new drivers that have not been fully tested may cause problems. To avoid problems and dead blue screen errors, you need to delete the failed driver, causing problems. This article will show you how to uninstall the driver completely on Windows.

Note: This guide is applicable on Windows 10, Windows 7 and Windows 8.1.

A corrupted driver may cause a blue screen error and you cannot log in and use the computer. In this case you need to boot into safe mode first. Refer to the following article. All problems with starting Windows in Safe Mode to know how to access this mode.

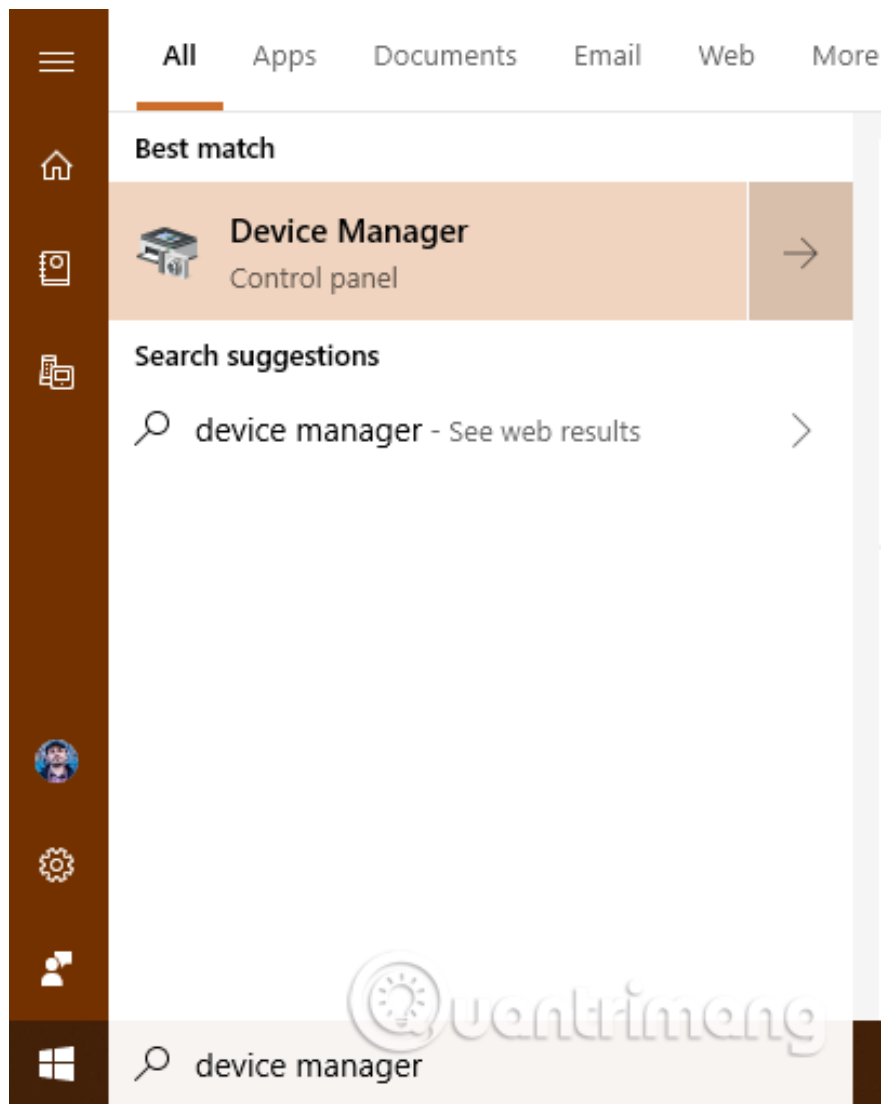
After entering Safe Mode, follow these steps.

1. Download drivers, update drivers with just one click with Driver Booster Free
2. Summary of driver error codes on Windows and how to fix
3. Summary of free driver backup software

How to completely remove the error driver on Windows

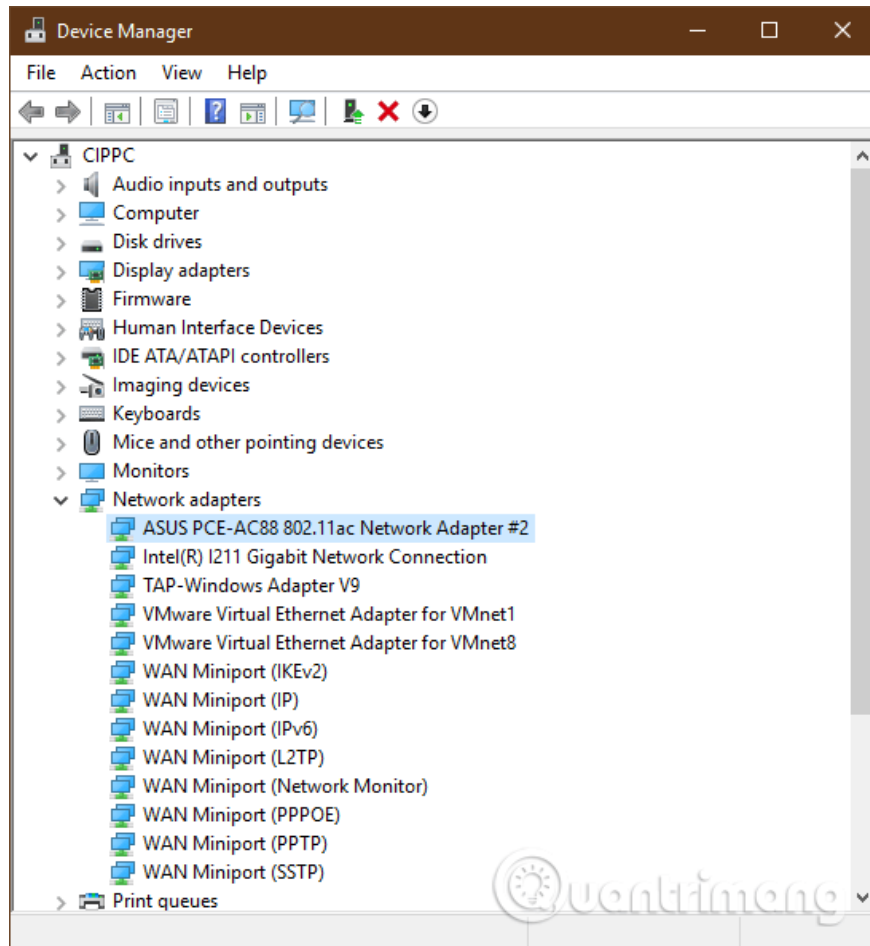
Step 1 . Open Device Manager

Open Device Manager by searching for **device manager** and clicking or touching the match. Alternatively, open the Control Panel and go to **Hardware and Sound** , then click the **Device Manager** link.



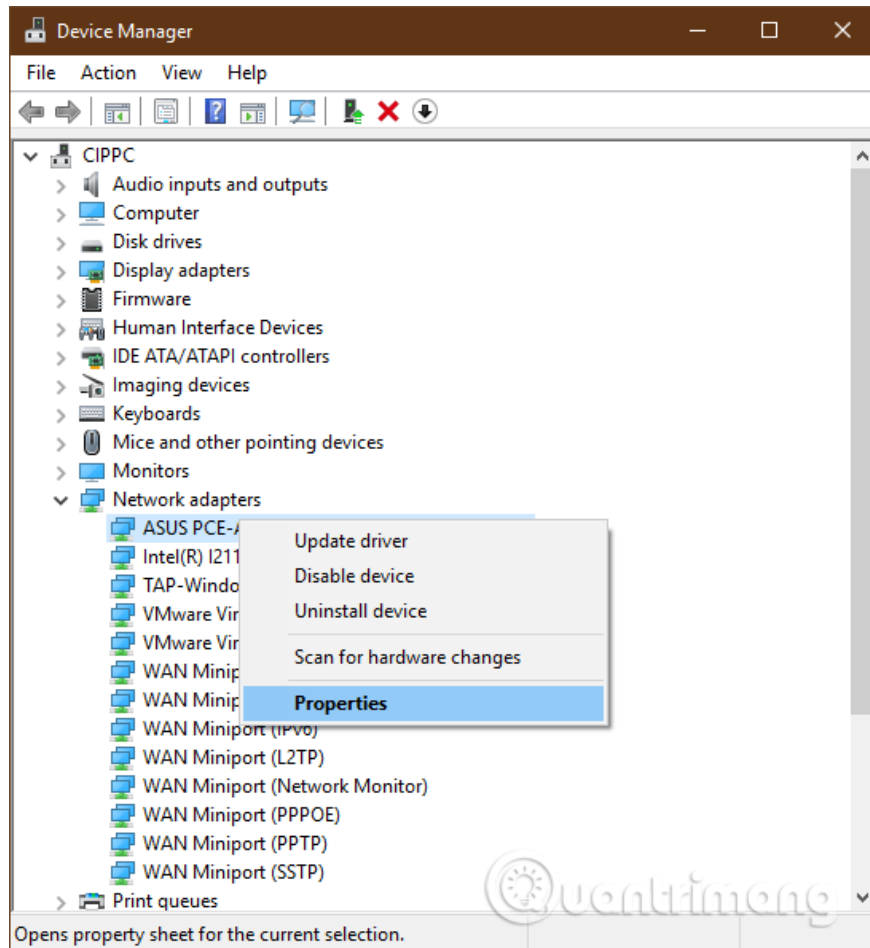
Step 2 . Find the device or hardware component with an error driver

Device Manager displays a list of all hardware components within the computer or connects to it. It also includes the hardware emulated by the applications you have installed. They are sorted by type. Browse the hardware list and find the component with the error driver causing your problem.



Step 3. Access the properties of the hardware component with the error driver

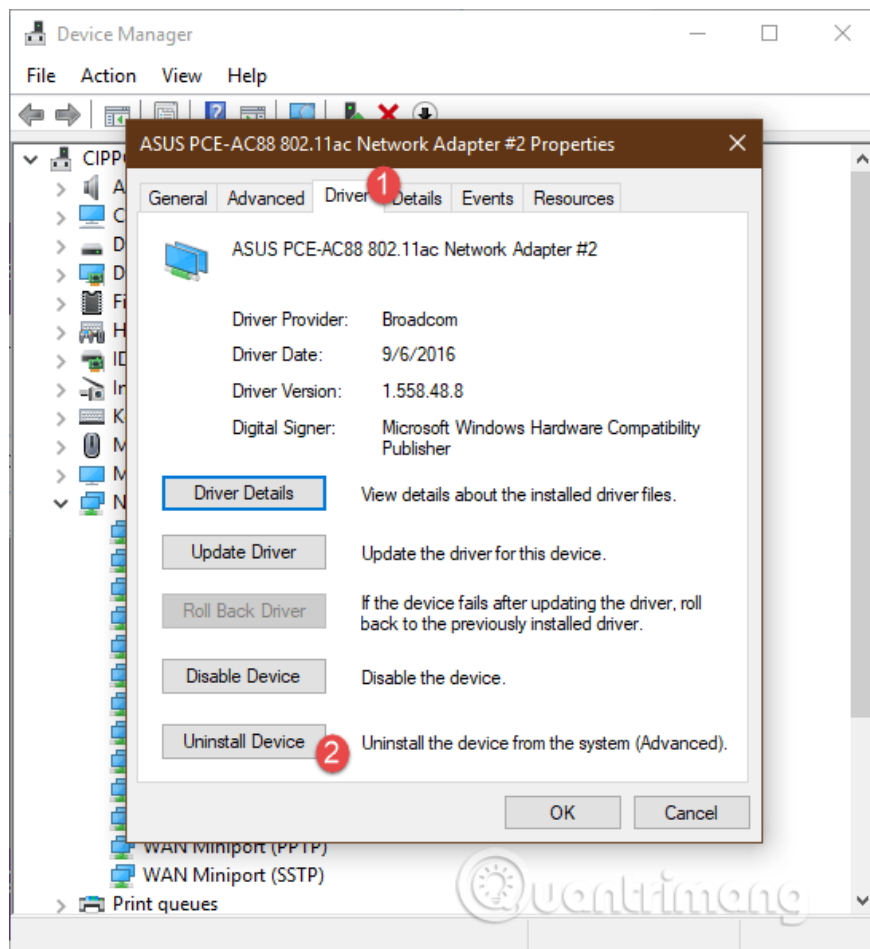
Right-click or press and hold (on the touch screen) the component name with the problematic driver. In the menu that opens, select **Properties** .



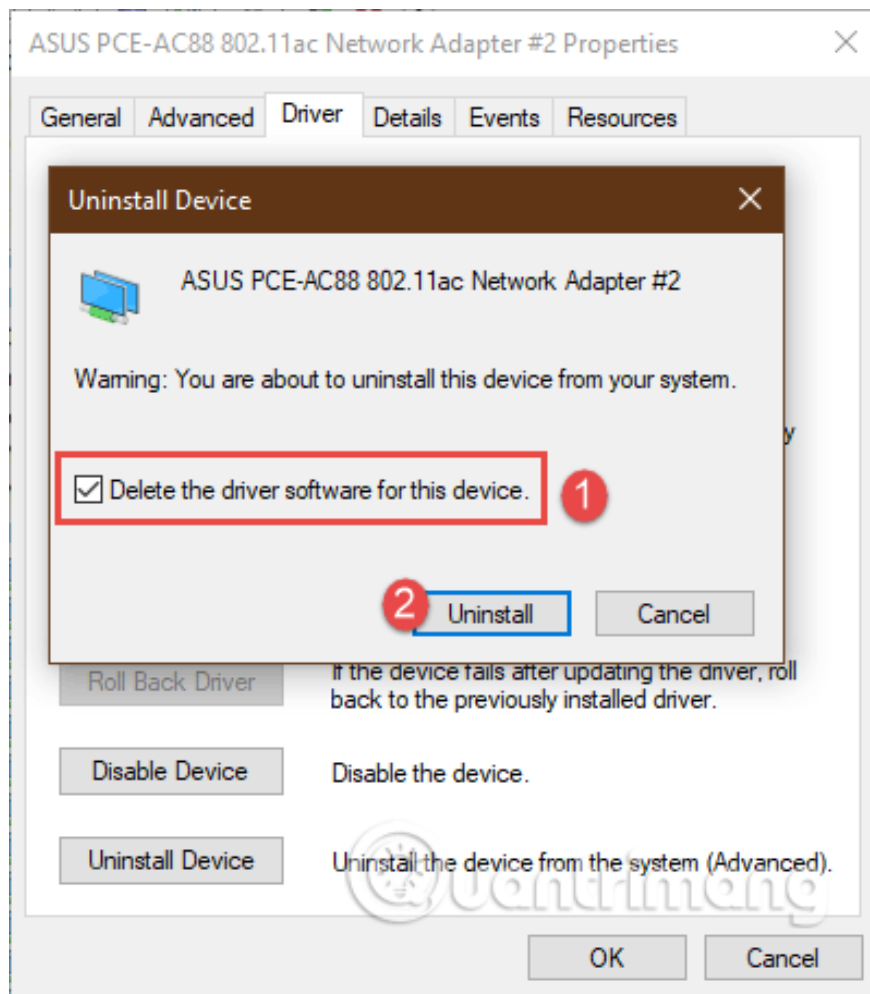
You can also click or touch the component with the driver error, then press **Alt + Enter** on the keyboard. Alternatively, click on the hardware component and then open the Action menu and select **Properties** .

Step 4 . Delete the failed driver from Windows

You should now see the properties window of the hardware component you selected. To completely remove its driver, access the **Driver** tab and click or tap the **Uninstall Device** .



Be sure to check the box that says: **Delete the driver software for this device** . Then click or tap **Uninstall** . If you do not select the box above, Windows will not completely remove the driver for the device, it will still keep the file on the drive and use them again after detecting that hardware component.



Driver error has been deleted and the hardware component is no longer in Device Manager. You can use the computer without any problems.

Driver error has been deleted, so what should we do next?

If the error driver is distributed through Windows Update, most likely, it will be reinstalled automatically by Windows. You can hide the failed driver update and block it from being installed. If you install a manual error driver, you should not install it again and find another version that works better.

I wish you all success!

You finished reading the article "**How to uninstall the driver completely on Windows**" edited by the [TipsMake](#) team. We hope this article has provided you with many useful tech tips and tricks. You can search for similar articles on tips and guides. Thank you for reading and for following us regularly.