

How to type mathematical formulas in Google Docs

As a popular online work application for office workers, Google Docs supports document creation in many different formats, including charts, images, and mathematical formulas. If you don't know how to insert, import, or type mathematical formulas in Google Docs, the content in this article will help you solve your problem.

When creating a document in Docs, you may encounter one or more different challenges, including inserting special characters or typing lengthy mathematical formulas on your computer. However, by referring to this guide on **how to type mathematical formulas in Google Docs** , you can create documents in various formats, including mathematical calculations and equations.



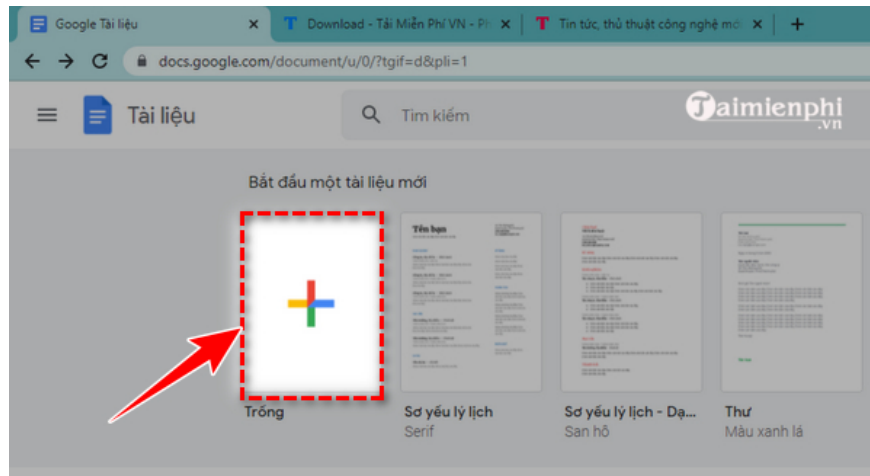
How to enter and type mathematical formulas in Google Docs, how to compose mathematical formulas in Google Docs on a computer or phone.

How to type mathematical formulas in Google Docs

If you're having trouble getting mathematical equations into Google Docs, the steps below will help you solve your problem.

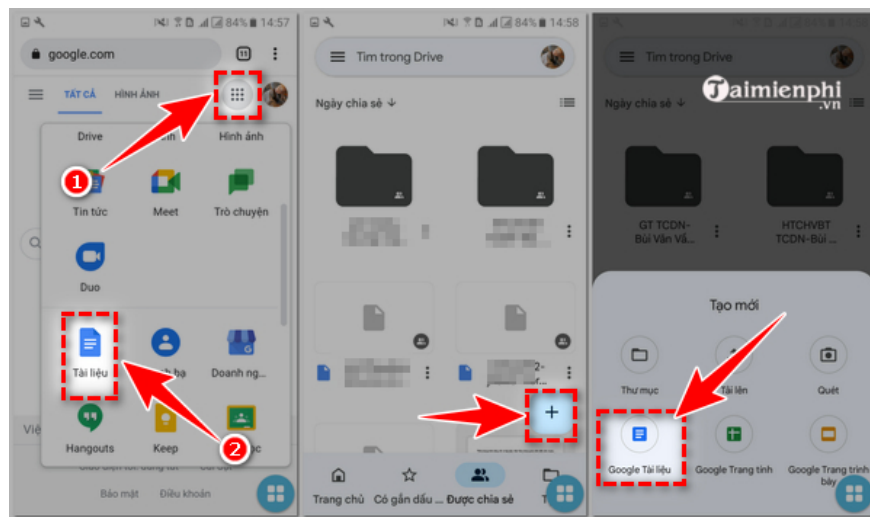
Step 1: Log in to your Google account and then access Google Docs.

Case 1 : If using a computer, you can access it quickly by clicking [Here](#) . Next, click the (+) icon to add a new document.



Case 2 : If using a phone, from a web browser, you need to access google.com. Next, on the Google account interface, select the supported Google applications and choose " **Documents** " .

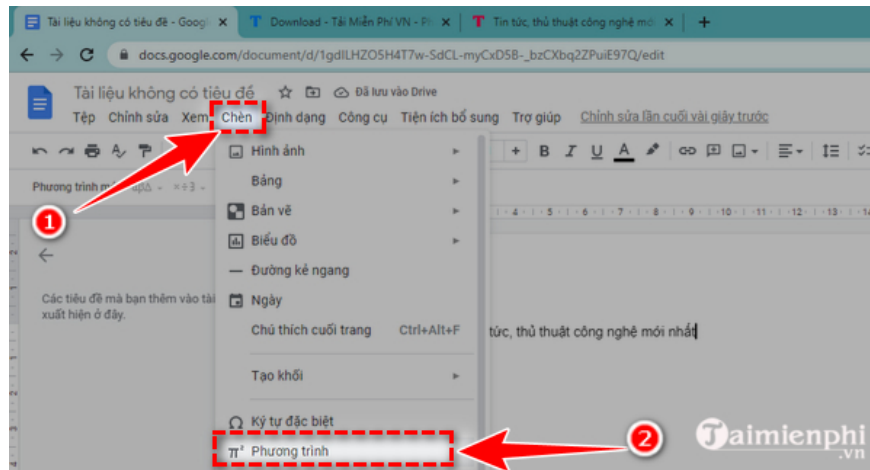
In the Google Drive interface, tap the (+) icon and then select " **Google Docs** " to create a new document.



Alternatively, you can also download the Google Docs app to your phone. The download links are as follows:

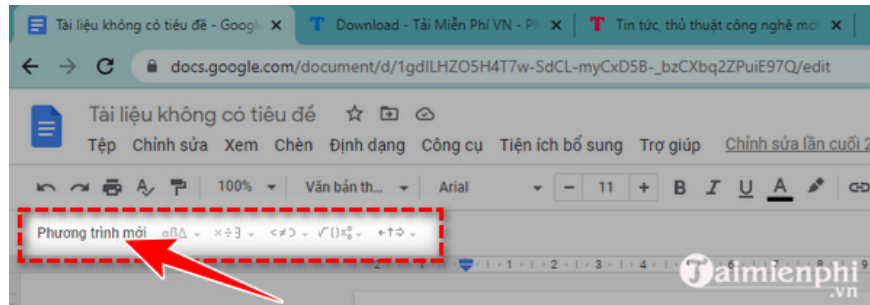
- Download Google Docs for Android
- Download Google Docs for iPhone

Step 2 : The Google Docs interface will appear, where you can edit your document just like in Word. To insert a mathematical formula, click "Insert" and then select " **Equation** " to begin entering the mathematical formula into your document.

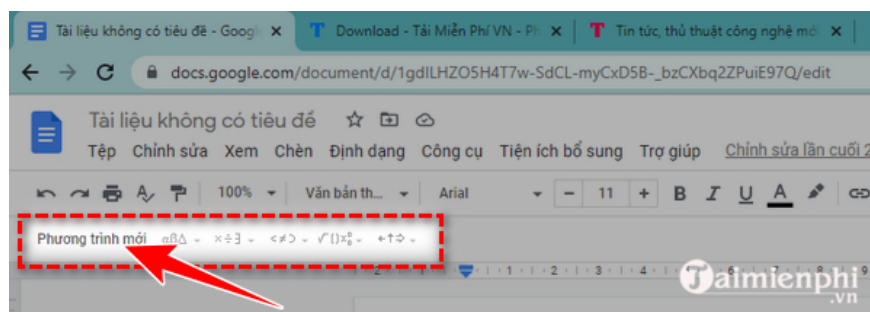


Step 3: Enter the mathematical formula into Google Docs

In the new equation control panel, click "**new equation**" to begin inserting mathematical formulas into your text.

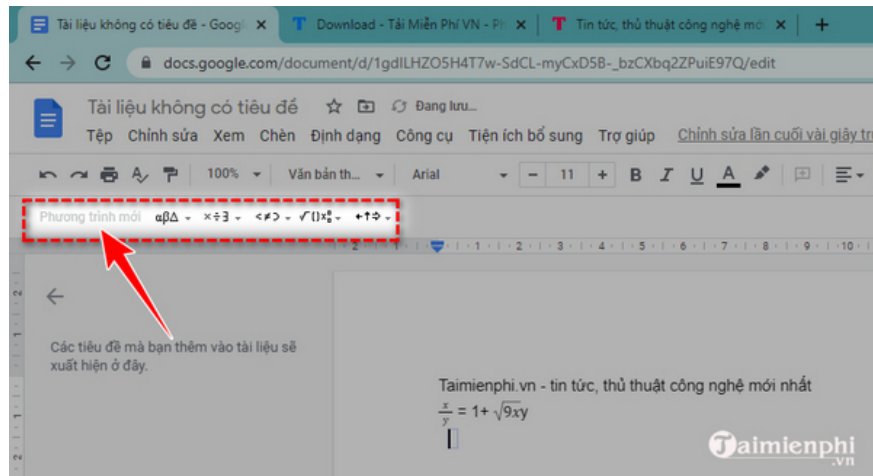


The mathematical formulas here are divided into different groups, including Greek characters, basic and advanced operations, and arrow characters. You need to select a group and choose to add it to the text from the dropdown menu for each item.

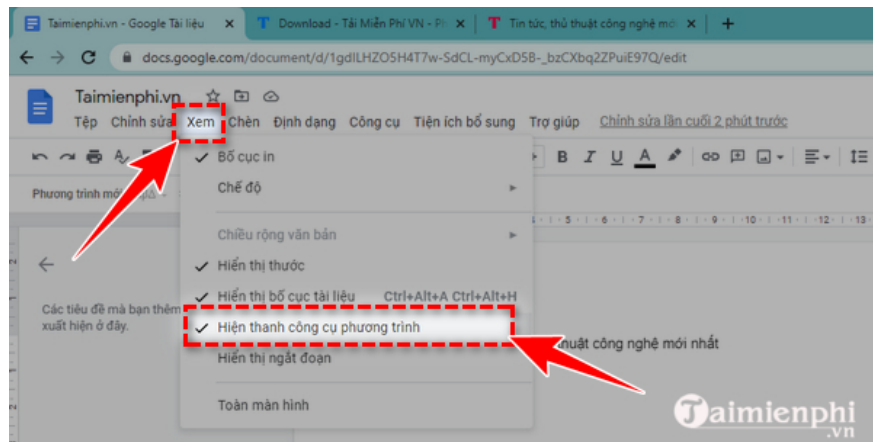


Step 4 : After clicking on the math icon, add the desired mathematical formula.

Step 5 : If you want to add another mathematical equation, click on the new equation and select the operation you want to add.



Step 6 : After completing the mathematical formula in Google Docs and wanting to return to the regular editor, click " **View** " and then click " **Show equation toolbar** " to uncheck the option in the column.



Above are detailed instructions on how to type mathematical formulas in Google Docs, typing mathematical formulas online using Google's online document editor. Please refer to these instructions and simplify the process of creating documents in various formats!

In addition to the above technique for inserting mathematical formulas into Google Docs, to fully utilize the great features of Google's online document editing application, readers can refer to TipsMake's article on tips for using Google Docs more effectively.

You finished reading the article "**How to type mathematical formulas in Google Docs**" edited by the [TipsMake](#) team. We hope this article has provided you with many useful tech tips and tricks. You can search for similar articles on tips and guides. Thank you for reading and for following us regularly.