

How to type angle symbols in Word simply and quickly

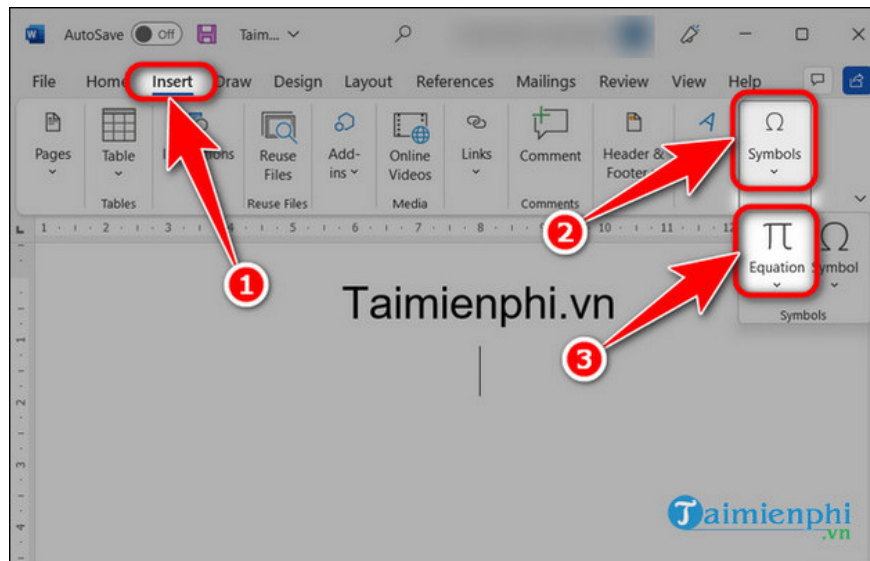
If you are using Word and want to insert mathematical expressions and are having difficulty not seeing the angle symbol. Follow this article to quickly draw angle symbols in Word with just a few simple steps.

Microsoft Word is a tool that not only helps you compose common documents, but it can also help you create math problems with complex mathematical symbols. If you work in geometry, you will definitely need to find **angle symbols in Word** . With these few simple steps, you will be able to do this with ease.

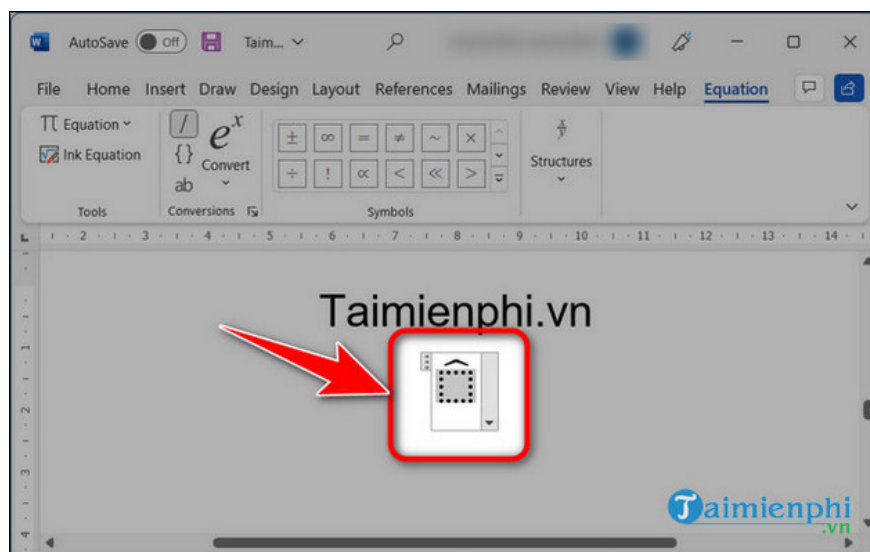
I. How to write angle symbols directly in Word

Step 1: Open your document with **Word** software .

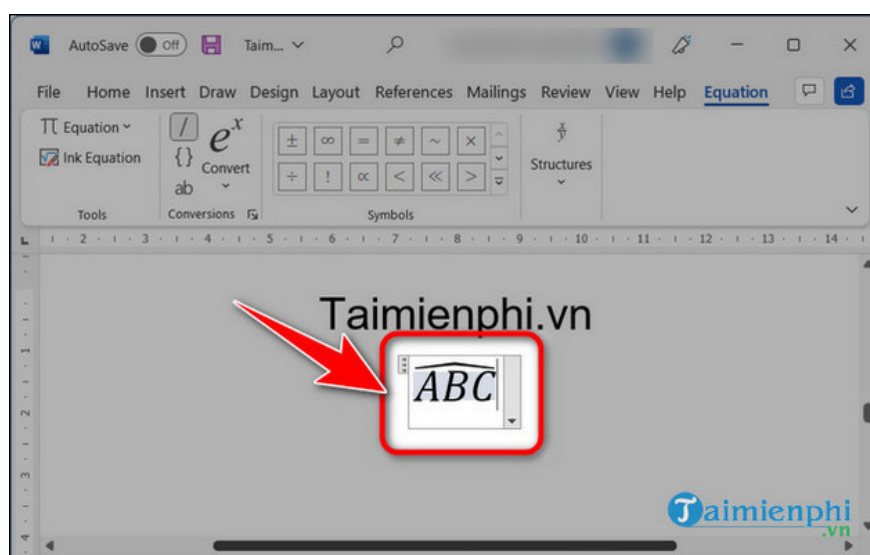
Step 2: Go to **Insert** => In **Symbols** , select **Equation** .



Step 3: Type **hat** and press **the spacebar twice** .



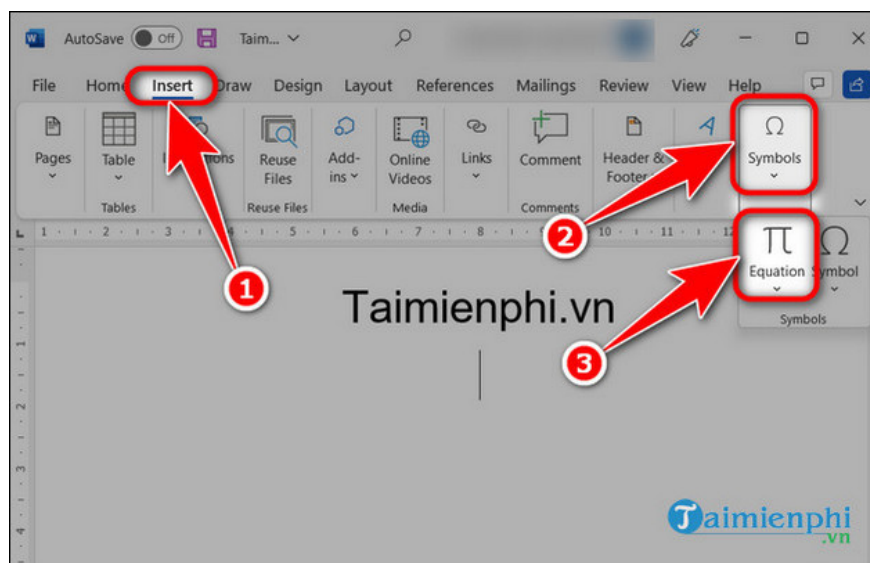
Step 4: Type the corner name in the dashed square => Press **Enter** .



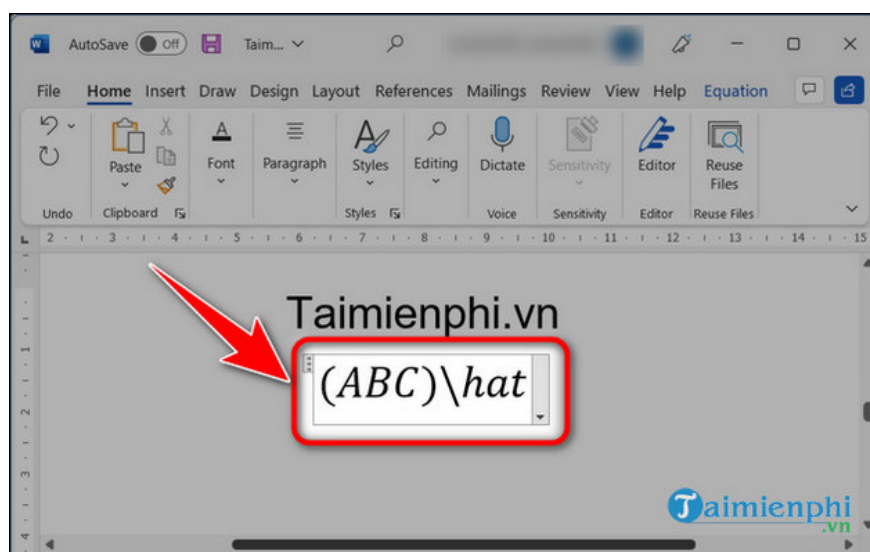
II. Combine angle brackets in Word

Step 1: Open your document with **Word** software .

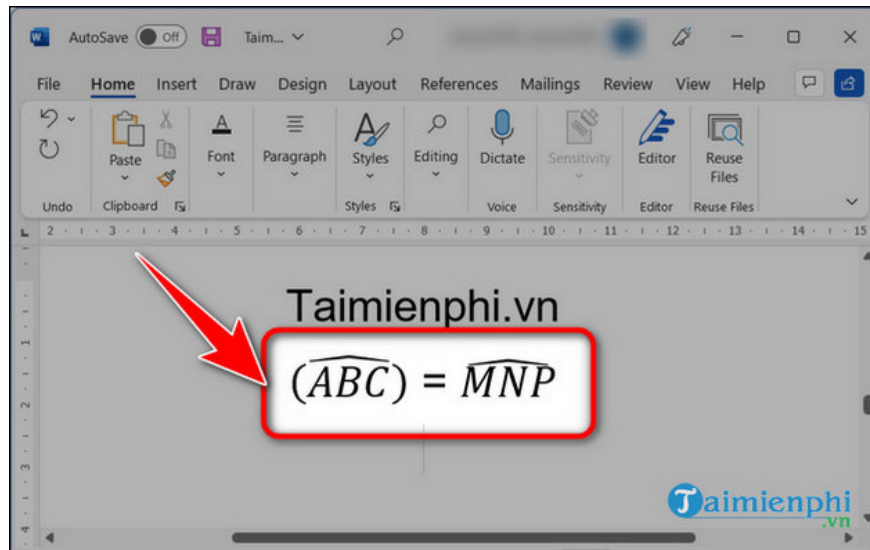
Step 2: Go to **Insert** => In **Symbols** , select **Equation** .



Step 3: Use **parentheses** to write the angle, then type **hat** and type **2 spaces** => Press **Enter** .



- Your results after completion:



Thus, inserting corner symbols is not too difficult, with just a few simple steps, you can do it yourself. Additionally, you can refer to the article **How to insert a signature into Word** so you can personalize the document and make it more professional than signing by hand.

You finished reading the article "**How to type angle symbols in Word simply and quickly**" edited by the [TipsMake](#) team. We hope this article has provided you with many useful tech tips and tricks. You can search for similar articles on tips and guides. Thank you for reading and for following us regularly.