

How to turn Windows 10 Services on and off, Enable, Disable Services

Services are background services in Windows 10 that help your computer function more efficiently. However, some services are unnecessary, and you need to know how to turn Services on or off to make your computer run more smoothly.

The more things running in the background, the slower your computer becomes. The best way to speed up Windows 10 is to disable services. However, disabling and enabling services requires caution, otherwise it can backfire and slow down your computer.

What are Windows services? What are they used for?

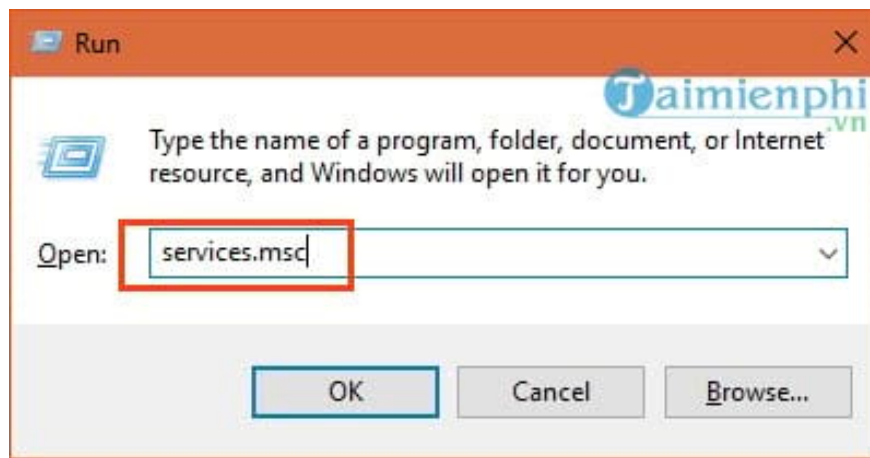
Windows Services, or simply Services, are applications that automatically start with your computer. Services have many uses, primarily supplementing features that are missing or necessary for Windows 10 and third-party software when installed.

Why should you turn off services?

Many services start with Windows 10, requiring the operating system to load them before entering the home screen. This slows down your computer if you have too many services running. Some services are useful but unnecessary; you can disable them to save startup time.

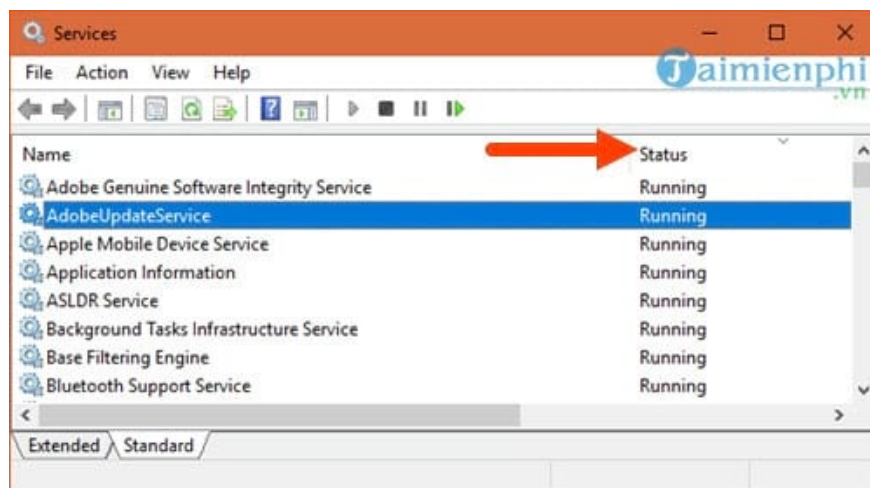
Instructions on how to turn services on and off.

Step 1: Press the Windows + R key combination , type **services.msc** , and press **OK** to open Services on your computer.



In Services, you can configure the operation of processes and services that run concurrently with the system.

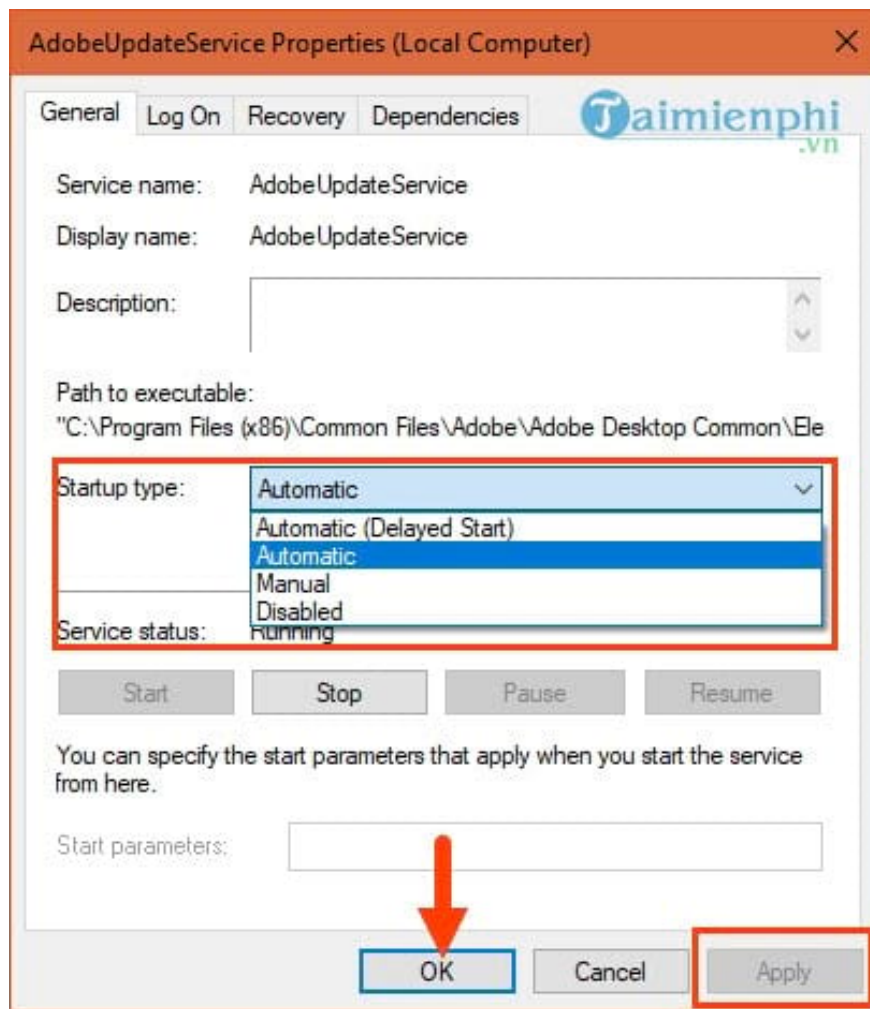
Step 2: In Services, click on Status to see which applications are running and close them.



Running applications have a "**Running**" status , while stopped applications will display a blank space.

Step 3: For example, to turn off Adobe's application updates.

Double-click the application, select one of the four options in the **Startup type** section , then click **Apply** => **OK** .



- **Automatic (Delayed Start)** : Automatically starts the process after a certain period of time when Windows starts up.

- **Automatic** : Automatically starts the process when Windows starts.

- **Manual** : Manual mode; the process only runs when you activate it.

- **Disable** : Stop the process and stop using it until you restart it.

Note : Adobe is a third-party service that, when installed, usually doesn't affect your computer but only the software itself. Background services are typically updates, so disabling them won't cause any problems. However, you should be cautious when disabling some specialized services, such as VMware.

With the above instructions, you now understand how to turn services on and off on Windows 10. TipsMake has noticed that many readers are wondering how to make their computer run smoother by disabling services and which services they should disable.

Don't worry, because in addition to guides on speeding up Windows 10, optimizing your computer, and making it run as smoothly as when it was new, TipsMake also provides readers with a list of unnecessary services to disable on Windows 10. Simply click on the following link to access the article on how to disable unnecessary services on Windows 10 and follow the instructions.

You finished reading the article "**How to turn Windows 10 Services on and off, Enable, Disable Services**" edited by the [TipsMake](#) team. We hope this article has provided you with many useful tech tips and tricks. You can search for similar articles on tips and guides. Thank you for reading and for following us regularly.
