

How to turn Tablet Mode off on Windows 10

How to turn Tablet Mode on and off on Windows 10. The Windows 10 operating system has been developed for tablets, laptops, PCs and other devices. However, there are PCs, Laptops and tablets that are the devices using the Windows 10 operating system the most, so the company has a built-in switch between Tablet Mode and Normal mode.

The Windows 10 operating system is developed for tablets, laptops, PCs and other devices. However, there are PCs, Laptops and tablets that are the devices using the Windows 10 operating system the most, so the company has a built-in switch between Tablet Mode and normal mode for users to easily operate. . In this article, Software Tips will guide you how to turn on / off Tablet Mode on Windows 10.

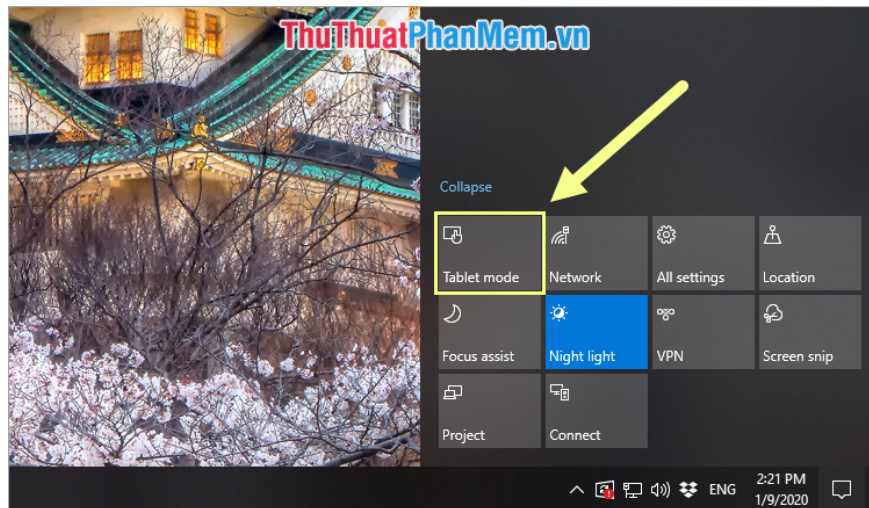


Method 1: Turn on / off in the Taskbar

Step 1: You proceed to select the **Action** icon on the Taskbar to see the options.



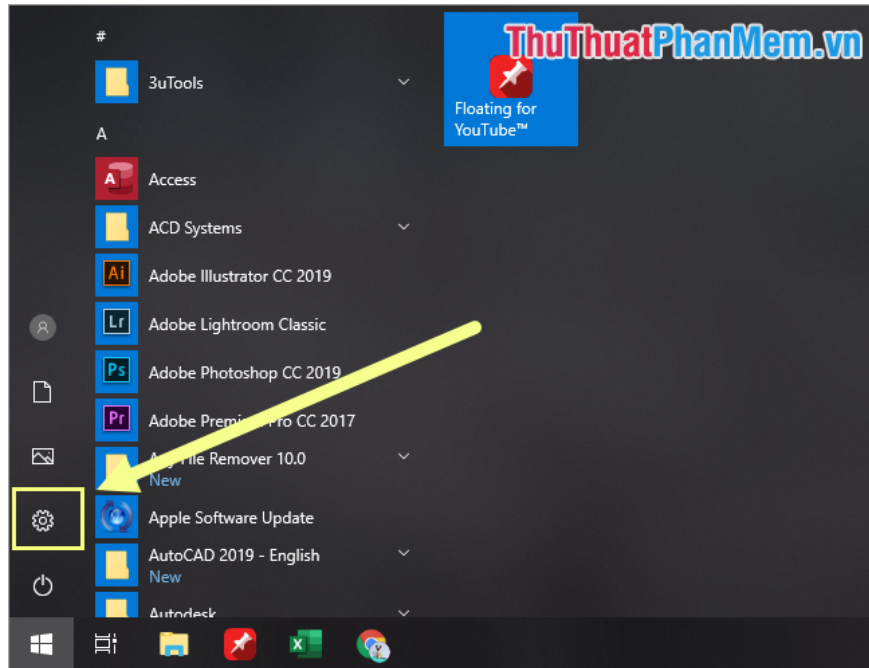
Step 2: You will see the icon of **Tablet Mode** here. You can click (light green) to turn on or click (dark gray) to turn off.



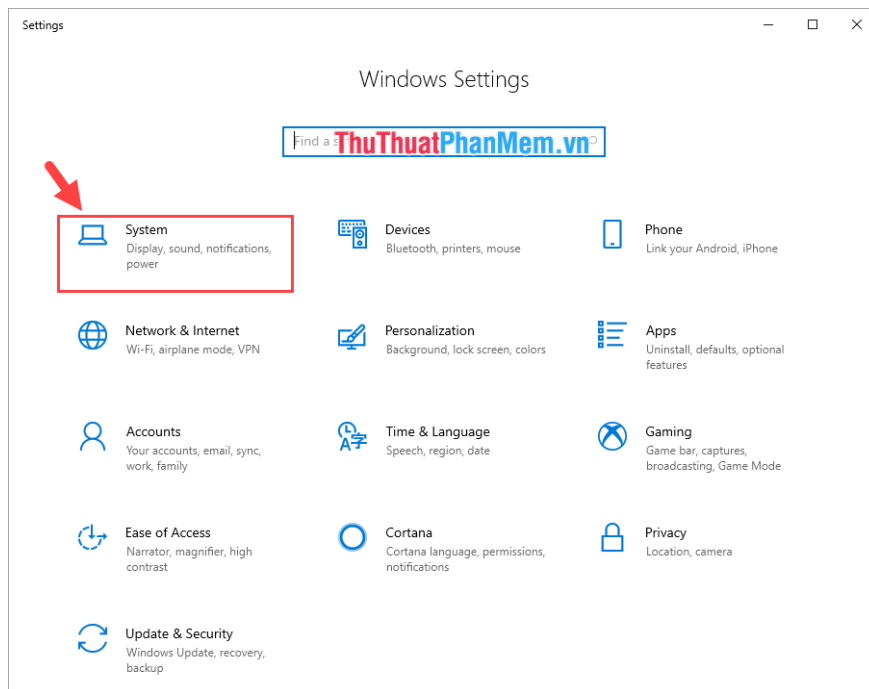
Method 2: Turn on / off in Windows Settings

In **Windows Settings** we can control all settings on our computer simply.

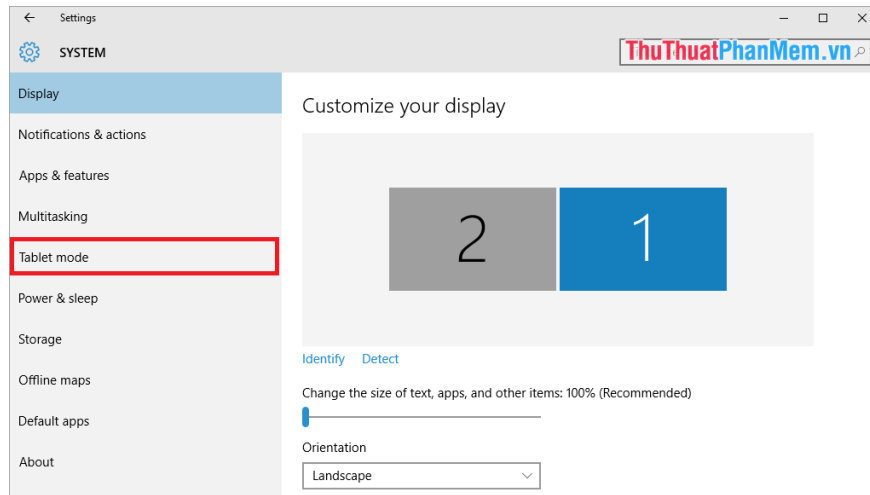
Step 1: Open **MenuStart** and select **Settings** .



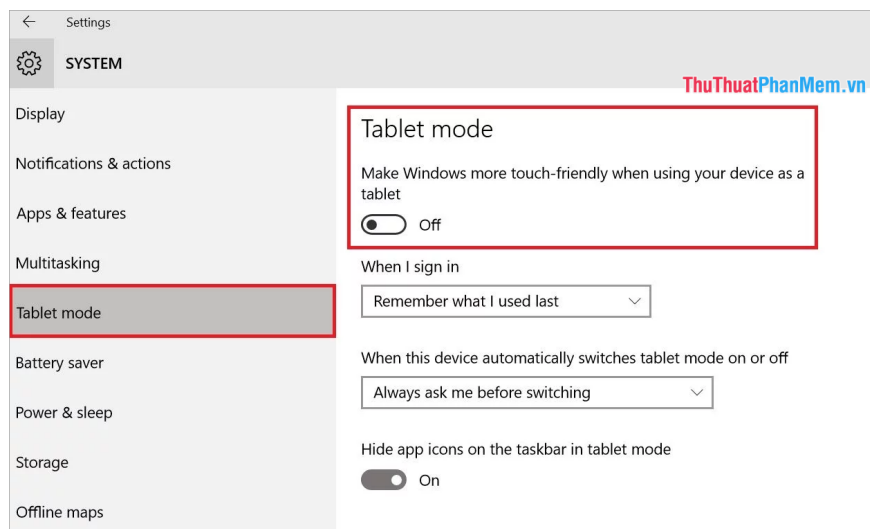
Step 2: After that, select **System** to open additional settings.



Step 3: Next, you choose **Tablet Mode** to set up.

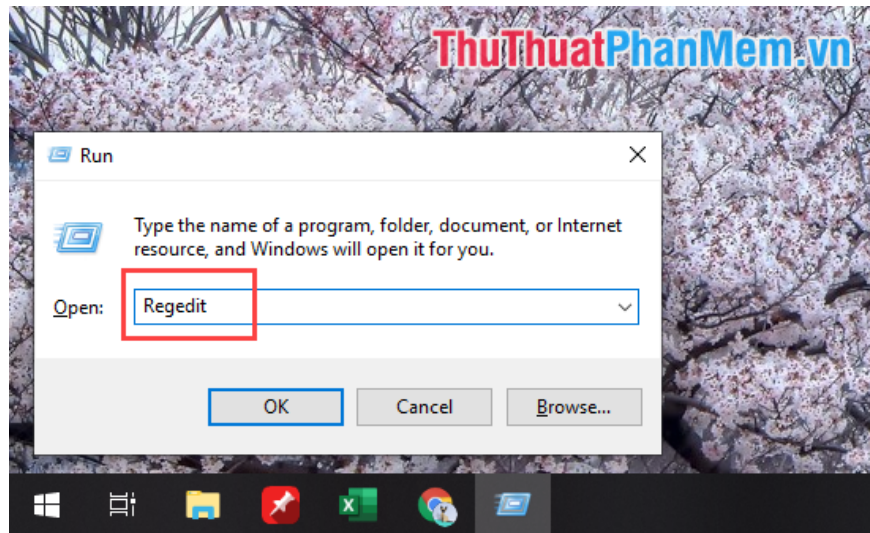


Step 4: You can set up Tablet mode on / off directly here.



Method 3. Turn off / on Tablet Mode using Registry Editor

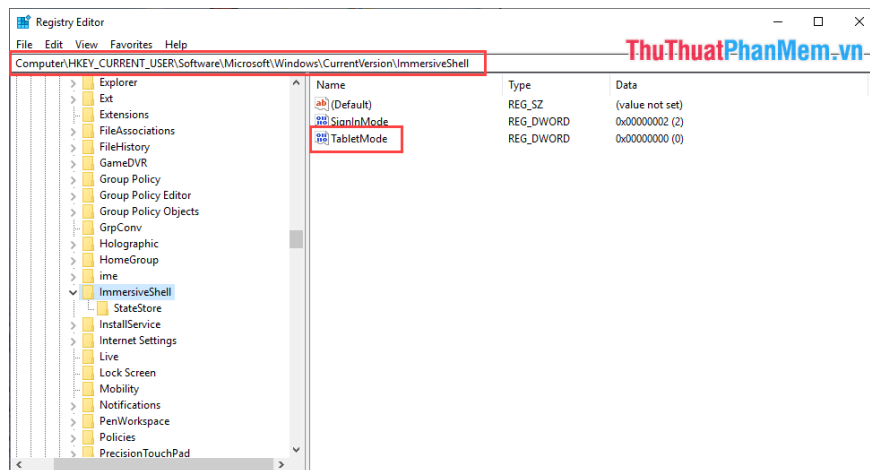
Step 1: You press **Windows + R** combination on the keyboard to open the **Run** window . Then, you proceed to enter **Regedit** and click **OK** to open.



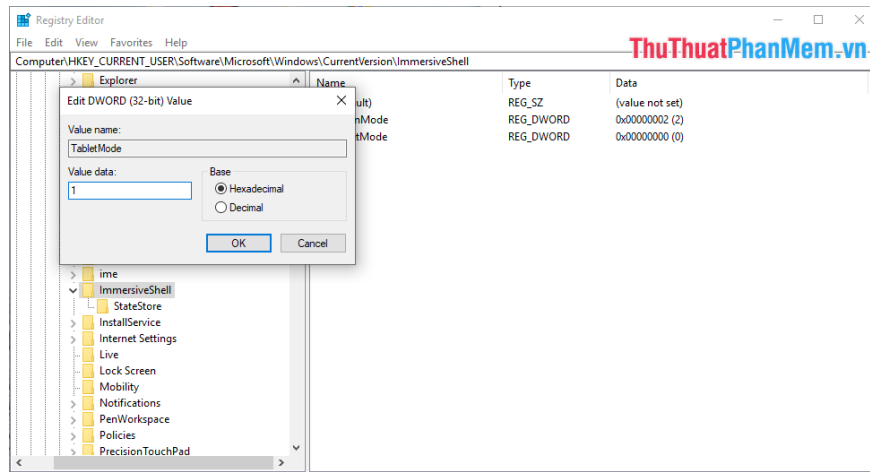
Step 2: After that, you open the following turn (can also paste the link directly to save time).

HKEY_CURRENT_USERSoftwareMicrosoftWindowsCurrentVersionImmersiveShell

Next, double click on **TableMode** to proceed to edit.



Step 3: Here, to turn on **TableMode** mode , enter **Value data as 1** and click **OK** . Conversely, if you want to turn off **TableMode** , then enter **Value data as 0** and click **OK** .



In this article, Software Tips have shown you how to turn on / off TabletMode mode on Windows 10. Wish you success!

You finished reading the article "**How to turn Tablet Mode off on Windows 10**" edited by the [TipsMake](#) team. We hope this article has provided you with many useful tech tips and tricks. You can search for similar articles on tips and guides. Thank you for reading and for following us regularly.