

How to turn on/off Inline AutoComplete in File Explorer address bar on Windows 11

This guide will show you how to enable or disable Inline AutoComplete for the Run address bar and File Explorer for your account in Windows 11.

This guide will show you how to enable or disable Inline AutoComplete for the Run address bar and File Explorer for your account in Windows 11.

As you type into File Explorer's address bar (**Win + E**) or Run (**Win + R**), Inline AutoComplete adds suggestions based on your address bar history and what you're currently typing automatically. Complete what you type inline with the most recent result highlighted. If there's a match, simply press the right arrow key or the Enter key to automatically complete what you're typing instead of having to type it all manually.

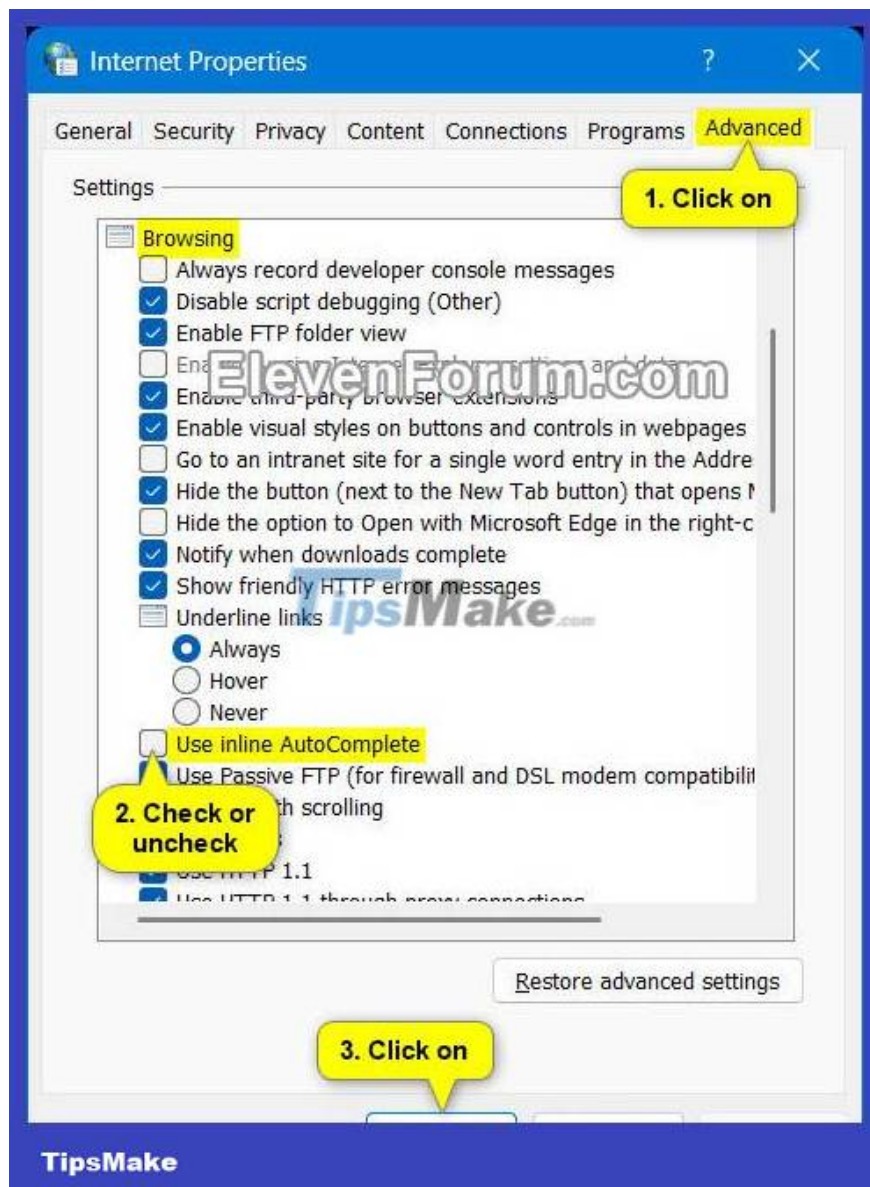
The Inline AutoComplete feature is disabled by default, but you can enable it if you want. Turning off Inline AutoComplete will not delete your address bar history.

Note:

1. The AutoComplete feature in the address bar of the new File Explorer no longer works.
2. AutoComplete still works in Run (Win + R).

Enable/disable Inline AutoComplete in File Explorer address bar and Run via Internet Properties

1. Open Control Panel (icon view) and click the **Internet Options** icon .
2. Click the **Advanced** tab in **Internet Properties** .
3. In the **Browsing** section , select (on) or uncheck (off - default) **Use inline AutoComplete** depending on what you want.
4. Click **OK**.



Turn on/off Inline AutoComplete in File Explorer address bar and Run with REG file

1. Perform step 2 (turn on) or step 3 (turn off) below according to your preference.

2. Enable Inline AutoComplete feature in File Explorer and Run address bar:

A) Download the REG file below and go to step 4.?

Enable_inline_AutoComplete_for_Run_and_File_Explorer_address_bar.reg?

REG file content is for reference only:

```
Code: Windows Registry Editor Version 5.00 [HKEY_CURRENT_USERSoftwareMicrosoftWindows
```

3. Turn off Inline AutoComplete feature in File Explorer and Run address bar:

Note : This is the default setting.

A) Download the REG file below and go to step 4.?

Disable_inline_AutoComplete_for_Run_and_File_Explorer_address_bar.reg

REG file content is for reference only:

```
Code: Windows Registry Editor Version 5.00 [HKEY_CURRENT_USERSoftwareMicrosoftWi
```

4. Save the .reg file to the desktop.

5. Double click the downloaded .reg file to merge it.

6. When prompted, click **Run** > **Yes (UAC)** > **Yes** > **OK** to approve the merge.

7. If File Explorer or Run is currently open, close and reopen to apply.

8. Now, you can delete the downloaded .reg file if you want.

You finished reading the article "**How to turn on/off Inline AutoComplete in File Explorer address bar on Windows 11**" edited by the [TipsMake](#) team. We hope this article has provided you with many useful tech tips and tricks. You can search for similar articles on tips and guides. Thank you for reading and for following us regularly.