

How to turn on Wake-On-LAN for the computer - Turn on the remote computer in the LAN

How to turn on Wake-On-LAN for the computer - Turn on the remote computer in the LAN. If your home uses multiple computers in different locations or your company has multiple computers connected through the LAN, you can turn on other computers remotely.

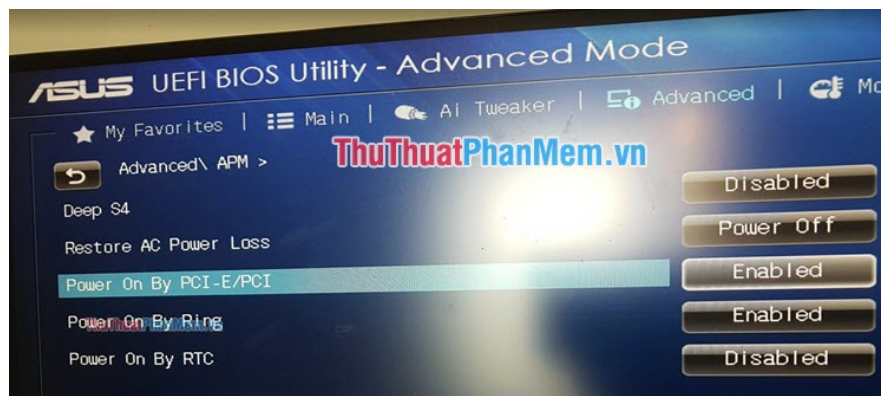
If your home uses multiple computers in different locations or your company has multiple computers connected through the LAN, you can turn on other computers remotely using the Wake-On tool -LAN. Wake-On-LAN allows the computer to recognize a 'magic' signal that contains a MAC address to wake up the computer via LAN or the Internet. Today, the Software Tips will show you how to turn on Wake-On-LAN.



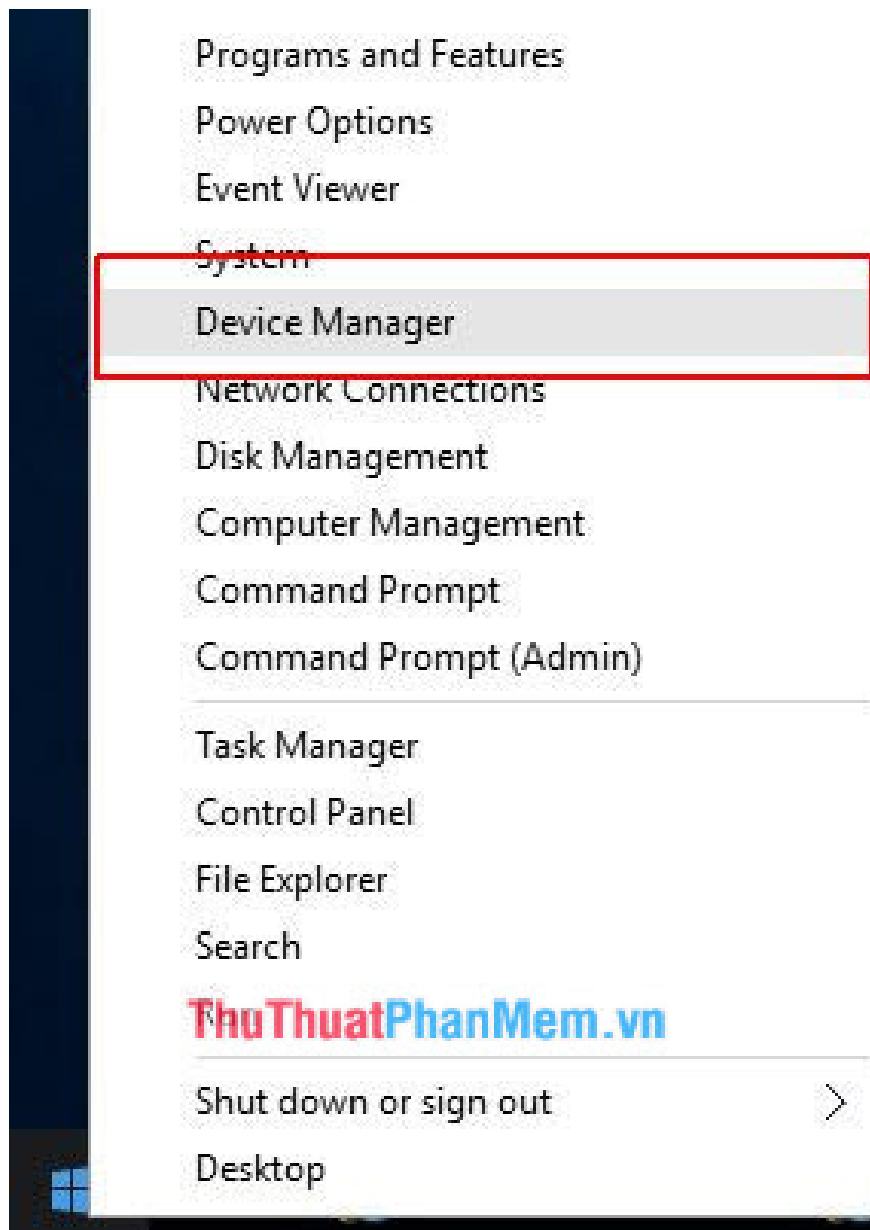
1. How to turn on Wake-On-LAN

Step 1: To use Wake-On-LAN, you must turn it on in the BIOS first (for motherboards with integrated network card). Here, the software trick uses Asus motherboard, it is located under **Advanced -> APM -> Power On By PCI-E / PCI**.

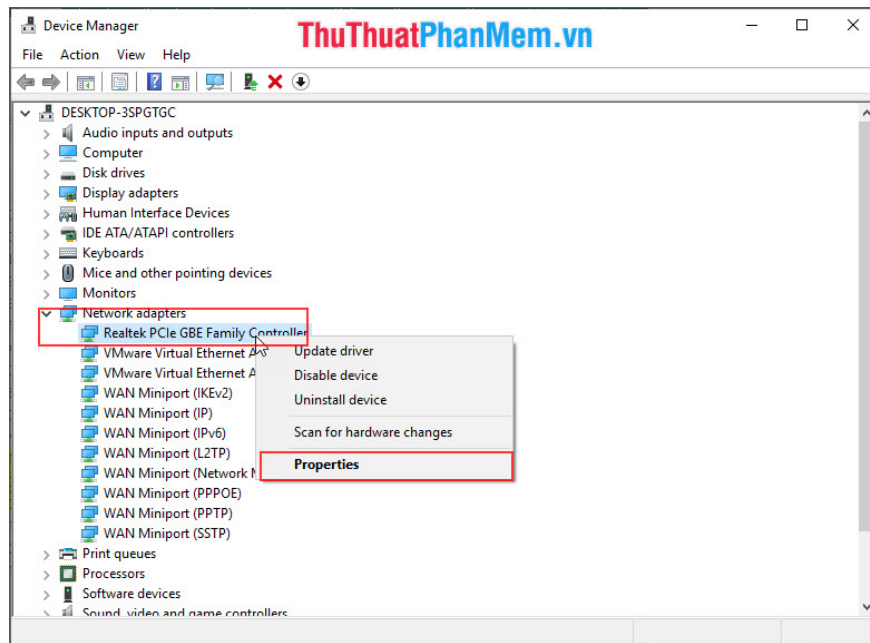
Most motherboards support the Wake-On-LAN feature, so look for it. But usually it will be in the **Power** section, so it's easy to find.



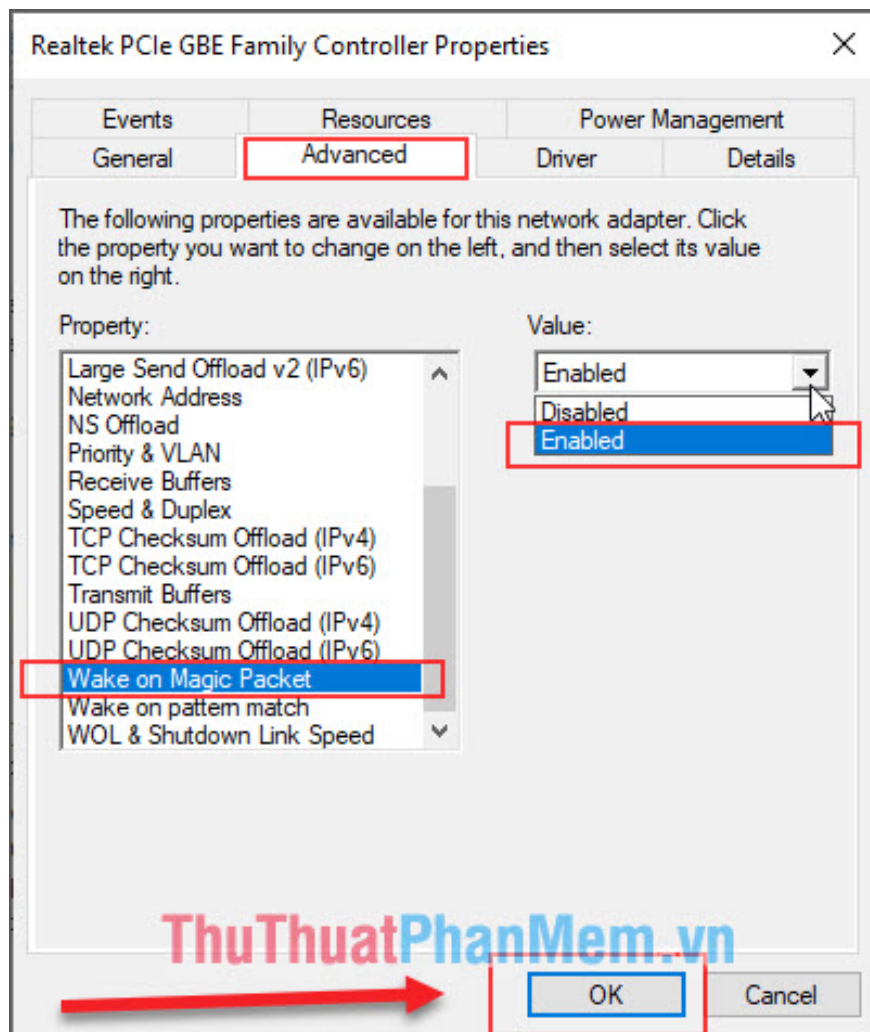
Step 2: After turning on Wake-on-LAN in BIOS successfully, start the computer as usual and press **Windows + X** or right-click the **Windows** icon and select **Device Manager** .



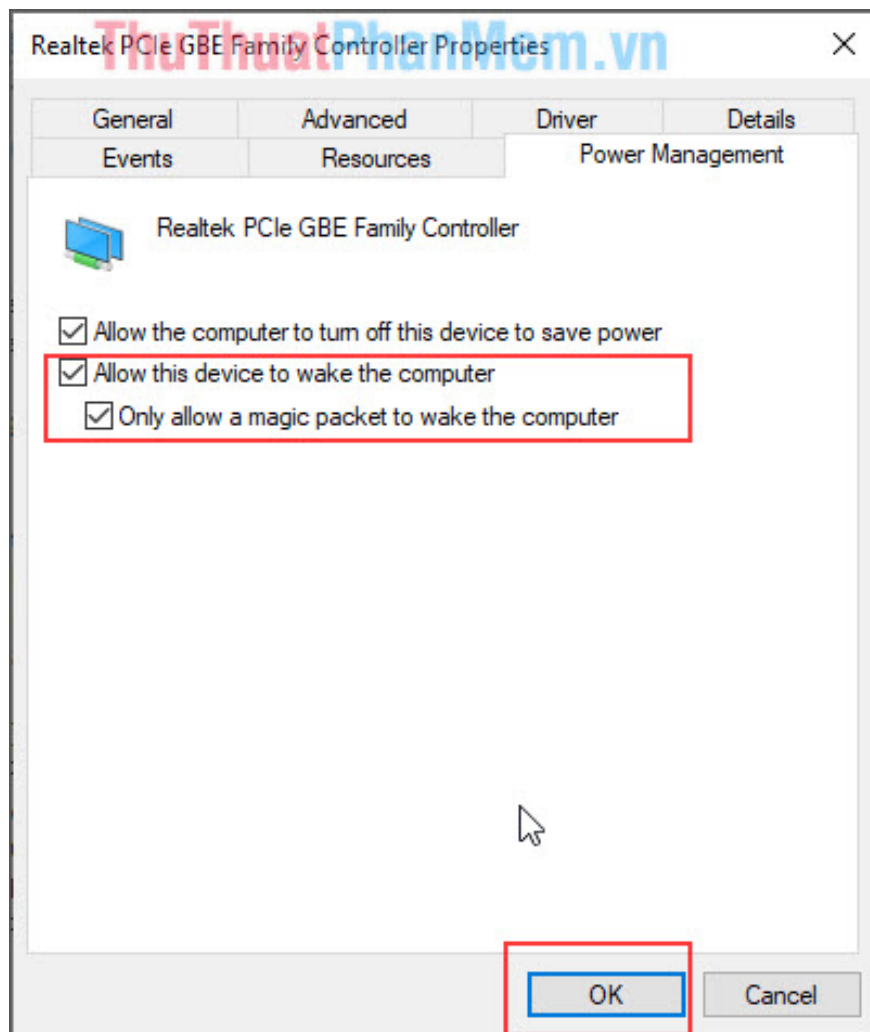
Step 3: In **Device Manager** , expand **Network Adapters** and locate the integrated network controller and right-click and select **Properties** . At this time, a new window will appear.



Step 4: On the new window that appears, go to the **Advanced** section and find an option called **Wake on Magic Packet** , turn it to **Enabled** as shown below.



Step 5: Continue to move to the Power Management section and proceed to choose the following settings. Choose the **section Allow this device to wake the computer** and **Only allow a magic packet to wake the computer** . Then you click **OK** to save settings.



2. How to use Wake on LAN

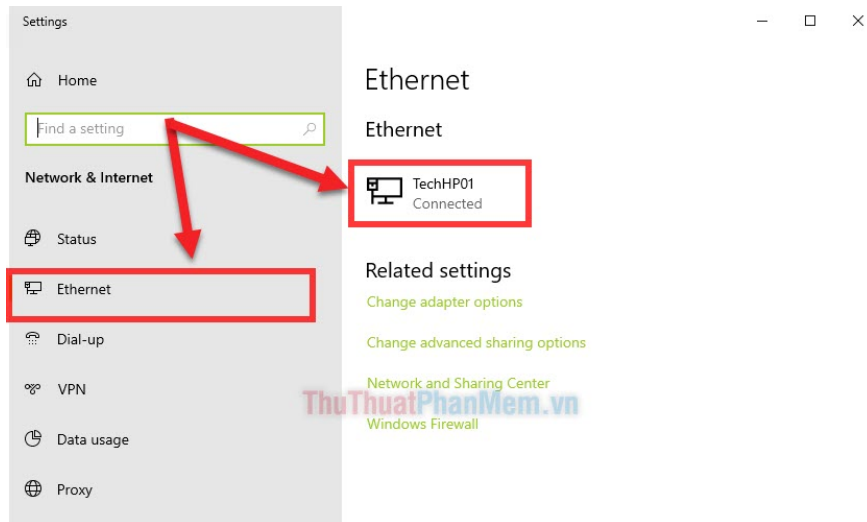
To use Wake on Lan feature, you need to install WakemeonLan software to activate.

Link: https://www.nirsoft.net/utils/wake_on_lan.html

Step 1: First you need to know the IP address, MAC address, the computer name you want to turn on.

1. See IP address / MAC address

In **Settings** -> Select **Enthernet** -> Click on **the computer icon** on the right



Then you scroll down to see information such as: IP address, MAC address, .

Properties

IPv6 address:	2001:ee0:4892:ac30:f5c2:37ee:fc7a:de9c
Link-local IPv6 address:	fe80::f5c2:37ee:fc7a:de9c%5
IPv6 DNS servers:	2001:ee0:324a::b 2001:ee0:324a::a
IPv4 address:	192.168.1.9
IPv4 DNS servers:	8.8.8.8 203.162.0.181
Primary DNS suffix:	Home
Manufacturer:	Realtek
Description:	Realtek PCIe GBE Family Controller
Driver version:	9.1.407.2015
Physical address (MAC):	D0-50-99- -B5-2A

Copy

ThuThuatPhanMem.vn

1. See the computer name

Right-click on the Windows icon on the Taskbar and select System.

Apps and Features

Power Options

Event Viewer

System

Device Manager

Network Connections

Disk Management

Computer Management

Windows PowerShell

Windows PowerShell (Admin)

Task Manager

Settings

File Explorer

Search

 un

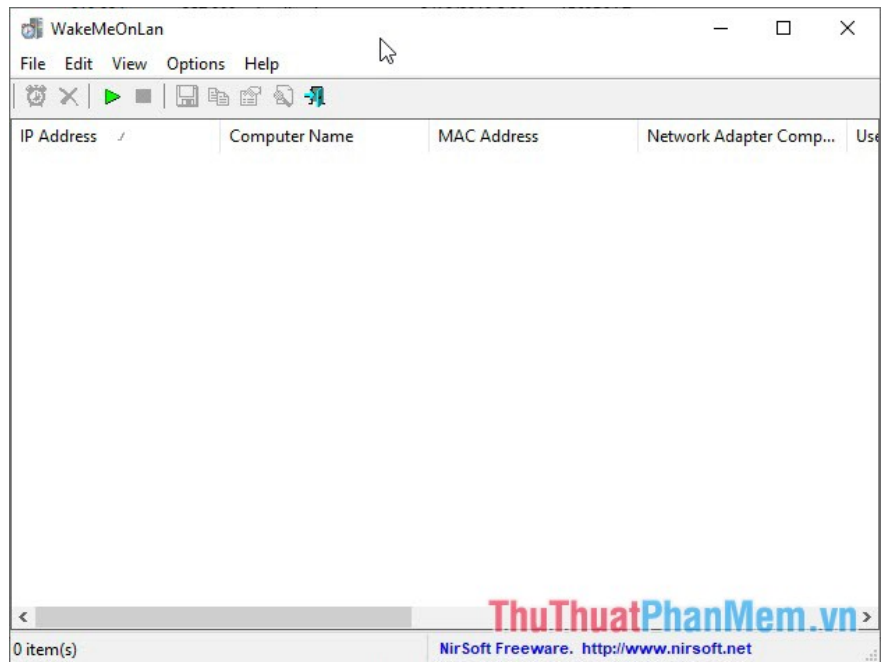
Shut down or sign out >

Here, you will see your computer information.

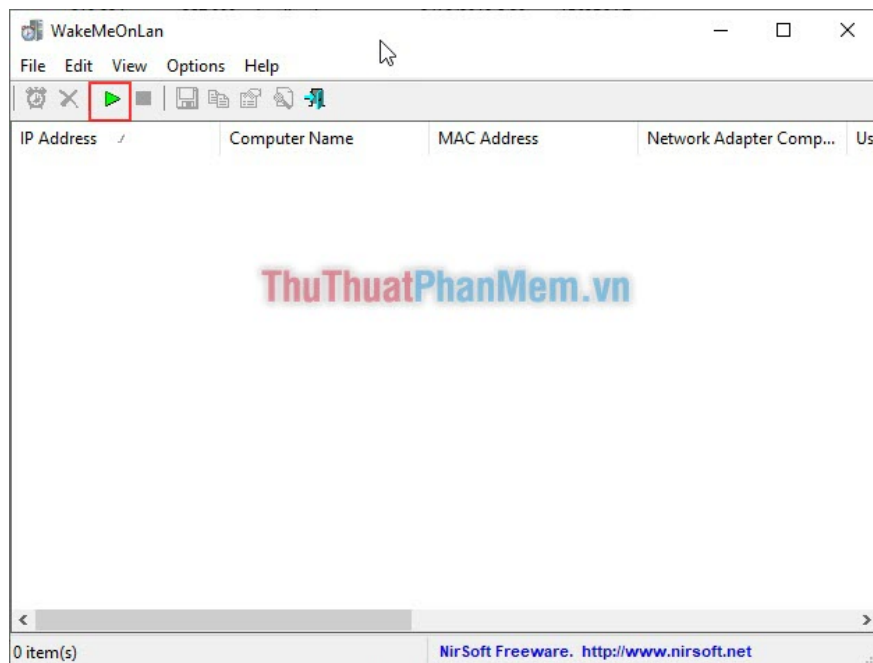
Device name	Tech1
Processor	Intel(R) Core(TM) i5-3570 CPU @ 3.40GHz 3.40 GHz
Installed RAM	8.00 GB (7.71 GB usable)
Device ID	60B29115-5FA9-4301-991F-BF352B9DB662
Product ID	00330-80000-00000-AA502
System type	64-bit operating system, x64-based processor
Pen and touch	No pen or touch input is available for this display

Rename this PC **ThuThuatPhanMem.vn**

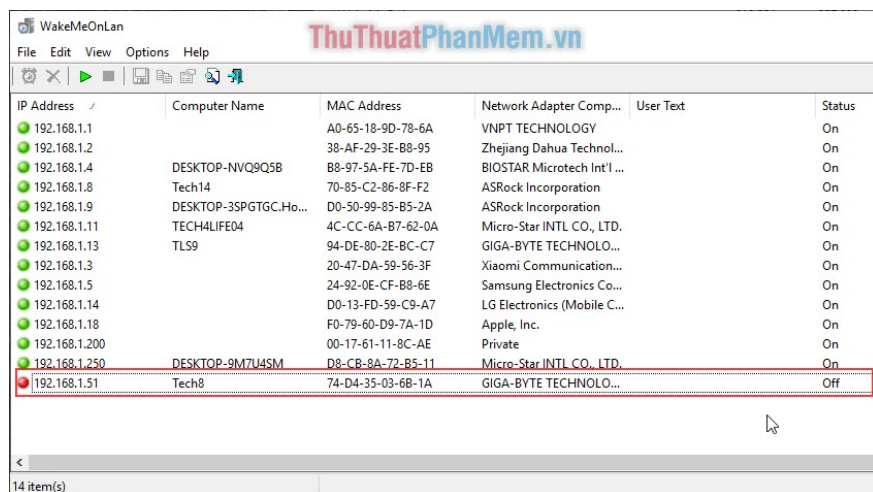
Step 2: After you have the computer address information to boot, you open the downloaded WakeMeOnLan software.



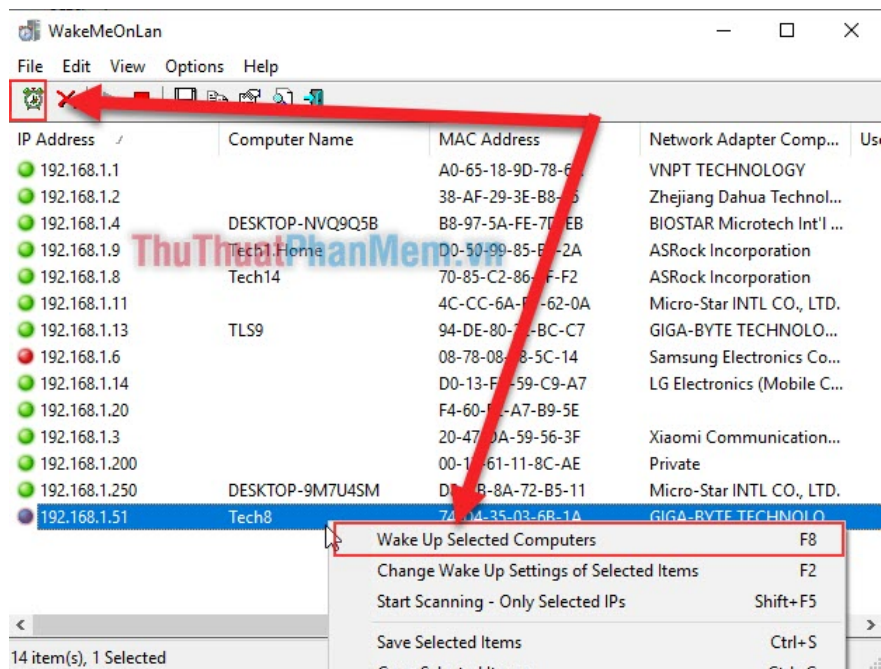
Step 3: Click the arrow icon to scan for computers that are on the same LAN.



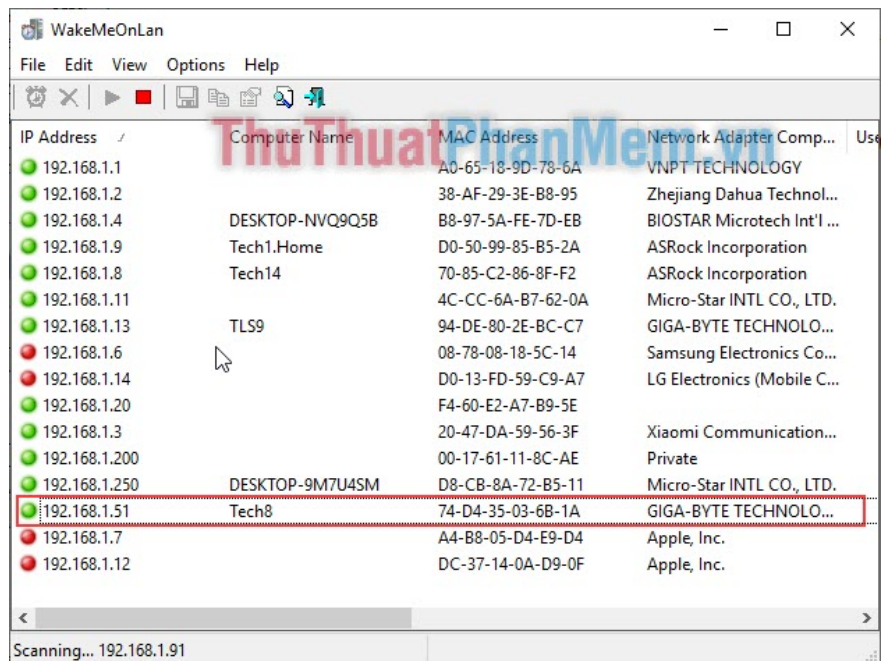
Step 4: After that, the WakeMeOnLan software will scan the IP addresses to find the computers connected to the LAN. Now you find the computer with the same name, IP, MAC address as instructions in Step 1.



Step 5: After determining the workstation to boot, right-click **Wake Up Selected Computers (F8)** or click the **clock icon** .



Step 6: After that, your computer will be automatically booted. And the status turns green (the device is turned on).

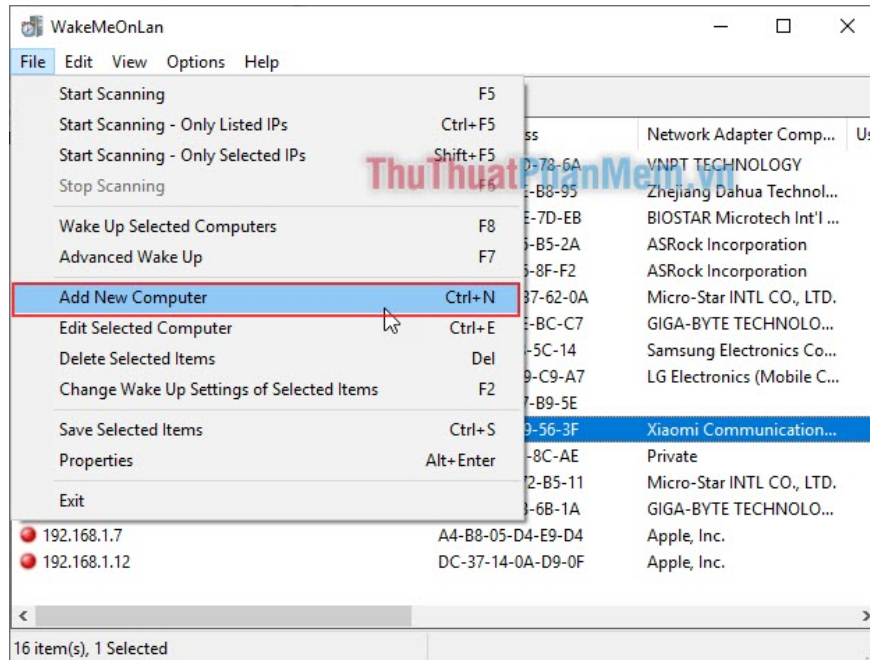


3. Fix error of not finding the device in WakeMeOnLan

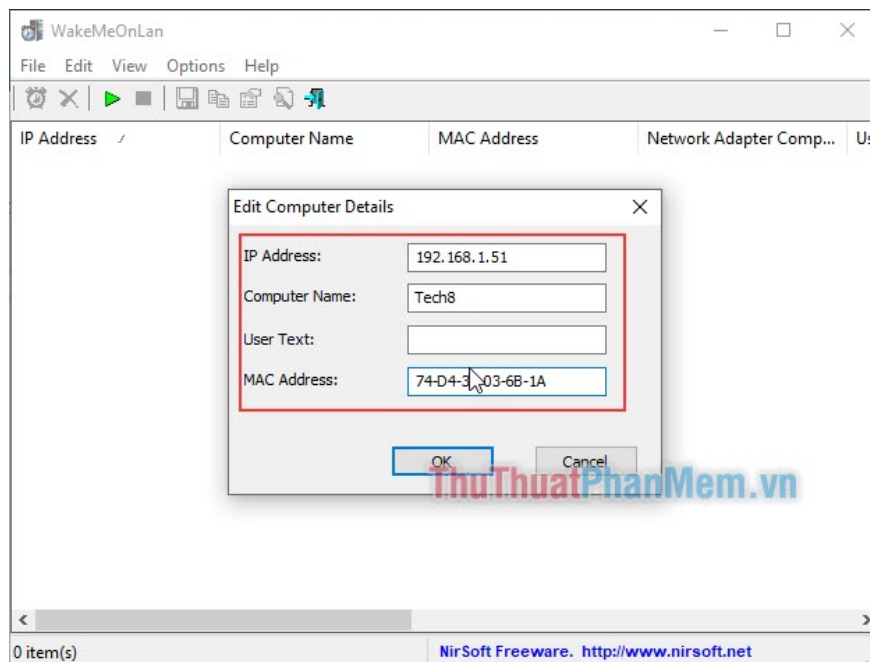
If you can't turn on the computer during the scan, you can:

1. Turn on the computer that needs remote booting up and scan again
2. Adding computers requires manual remote booting manually

Step 1: Click **File -> Add New Computer** (or press **Ctrl + N**)



Step 2: You proceed to enter the IP address, hostname, MAC address of the device that needs to be turned on remotely (This information you see in Step 1 - Part 2). Then click **OK**.



Now the Wake-on-LAN feature has been started on Windows. Good luck!

You finished reading the article "**How to turn on Wake-On-LAN for the computer - Turn on the remote computer in the LAN**" edited by the [TipsMake](#) team. We hope this article has provided you with many useful tech tips and tricks. You can search for similar articles on tips and guides. Thank you for reading and for following us regularly.

