

How to turn on, turn off Location Sensing on Windows 7 and Windows 8

Not only can phones locate you, but on many laptops and desktops, there is also a location determination feature built into the hardware. Location Sensing on Windows 7 and Windows 8 is disabled by default. This article will show you how to turn on and off location sensing features on Windows 7 and Windows 8.

Not only can phones locate you, but on many laptops and desktops, there is also a location determination feature built into the hardware. Location Sensing on Windows 7 and Windows 8 is disabled by default. This article will show you how to turn on and turn off Location Sensing on Windows 7 and Windows 8.

How to enable or disable the Location Sensing feature on Windows 7

Step 1: Open the **Start** menu.

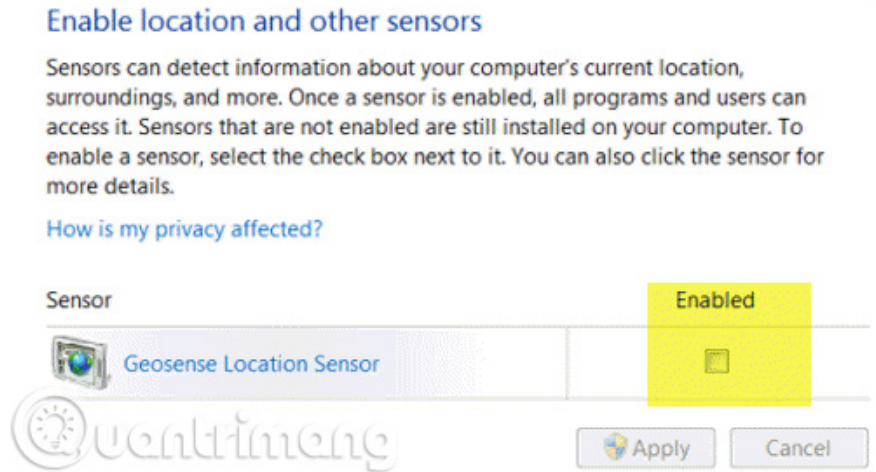
Step 2: In the search box, type " **sensor** " (without quotes).

Step 3: In the **Control Panel** list, select " **Enable location and other sensors** ".

Step 4: A list of installed sensors will appear.

Step 5: Enable or disable this feature by using the checkbox next to Sensor. See the picture below.

Step 6 : Click ' **Apply** '.



When a program or service requires location information from a Sensor, Windows 7 displays a small icon in the notification area (system tray).

How to enable or disable the Location Sension feature in Windows 8

Step 1 : Open **Control Panel** .

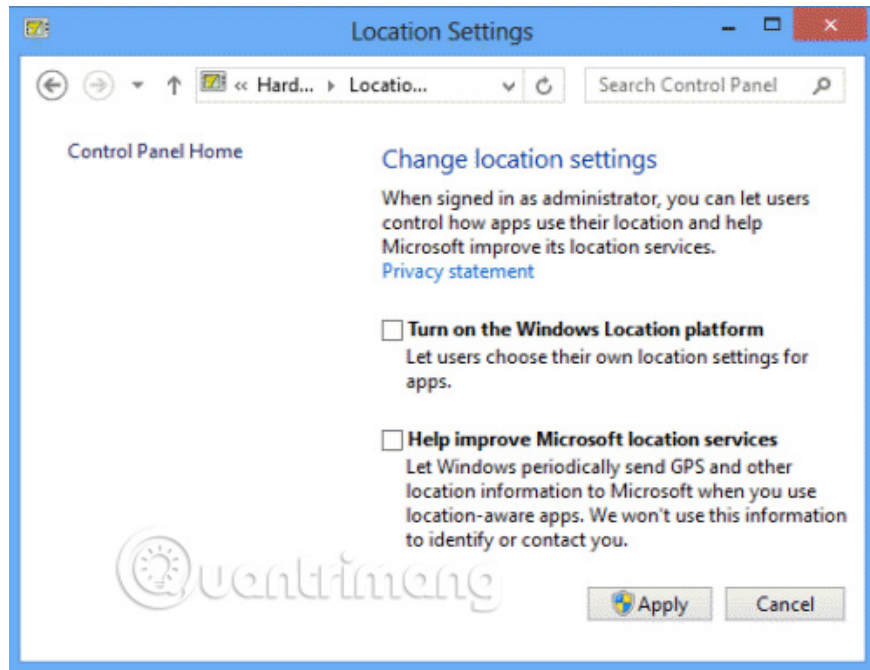
Step 2 : In the Control Panel search box, enter " **sensor** " (without quotes).

1. Quickly open the tools in Control Panel with Run

Step 3: Click ' **Change location setting s** '.

Step 4 : The dialog box shown below will appear.

Step 5 : In this setting, you can select the option to allow users to turn on Location Sensing feature for each application (requires administrative rights if using this setting).



Check location activity in Windows 7

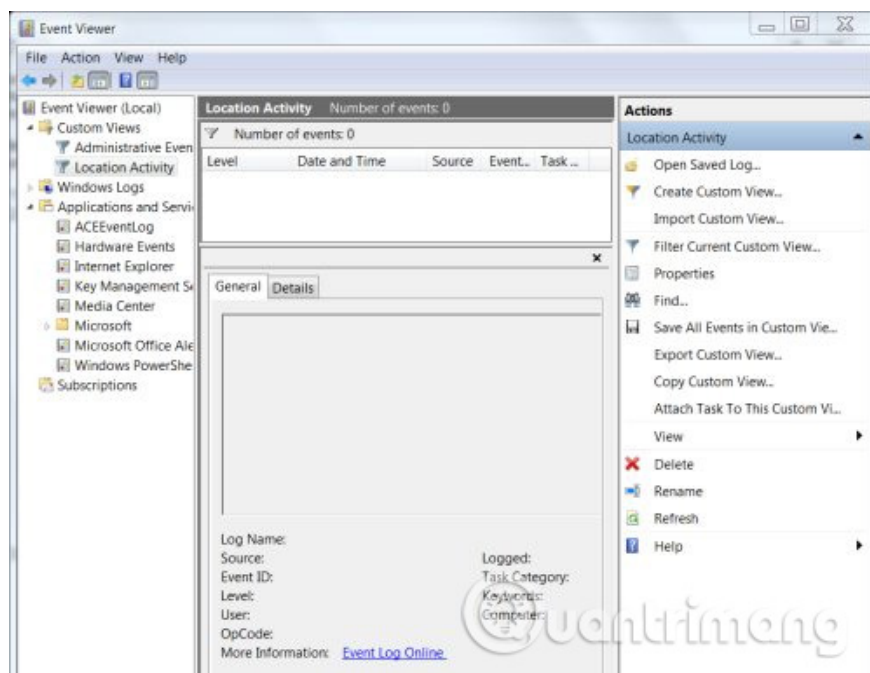
The Event Viewer is used to view the location request log that has been made.

Step 1: Open the **Start** menu .

Step 2: In the search box, type " **sensor** " (without quotes).

Step 3 : In the Control Panel list, select ' **View location activity** '.

The figure below shows the sample log.



I wish you all success!

See more:

1. Determine the geographic location of a PC using Windows 7
2. Applications that track user location
3. Turn off location tracking on Windows 10

You finished reading the article "**How to turn on, turn off Location Sensing on Windows 7 and Windows 8**" edited by the [TipsMake](#) team. We hope this article has provided you with many useful tech tips and tricks. You can search for similar articles on tips and guides. Thank you for reading and for following us regularly.