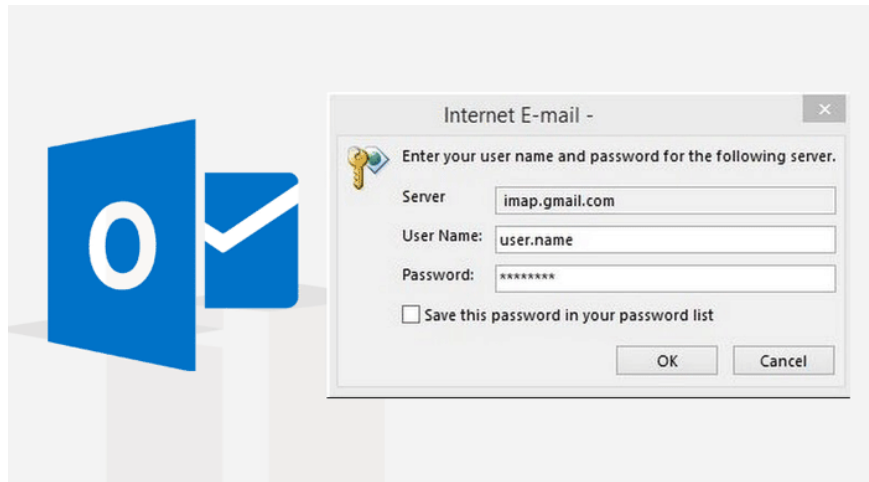


# How to turn on POP / IMAP Gmail to use in Outlook

Suppose in some case when you try to connect an Outlook account to a Gmail account, but an error cannot be reached. To fix this error, please refer to the following article of Network Administrator.

Suppose in some case when you try to connect an Outlook account to a Gmail account, but an error cannot be reached. So how to fix this error, please refer to the following article of Network Administrator.



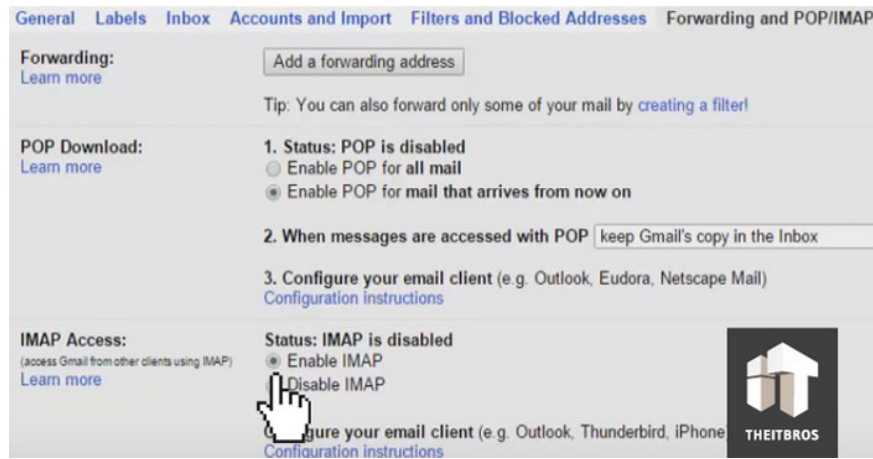
If Outlook cannot connect to your Gmail account, the first thing you need to do is enable POP / IMAP.

Log in to your Gmail account then click **Settings** .

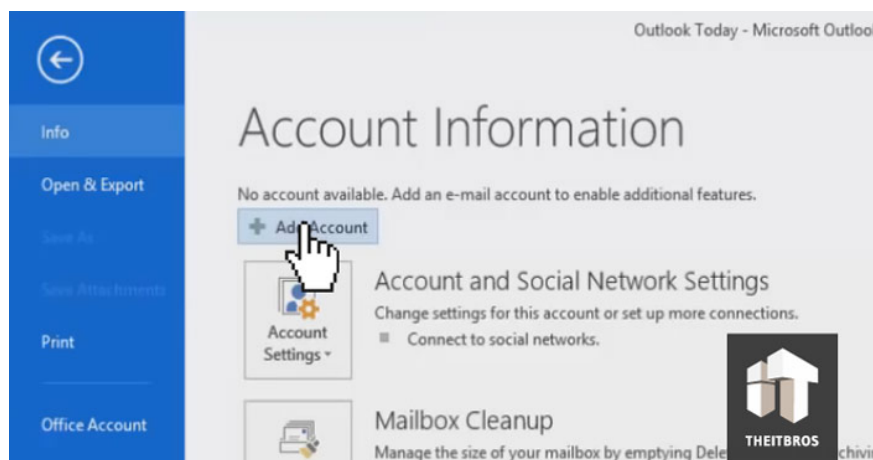
On the Settings interface, you switch to **Forwarding and POP / IMAP** cards . Here you will see the POP status and the IMAP status is off.

Your task is to enable **POP** and **IMAP** status to open status.

Once done, click **Save change** to save the changes.



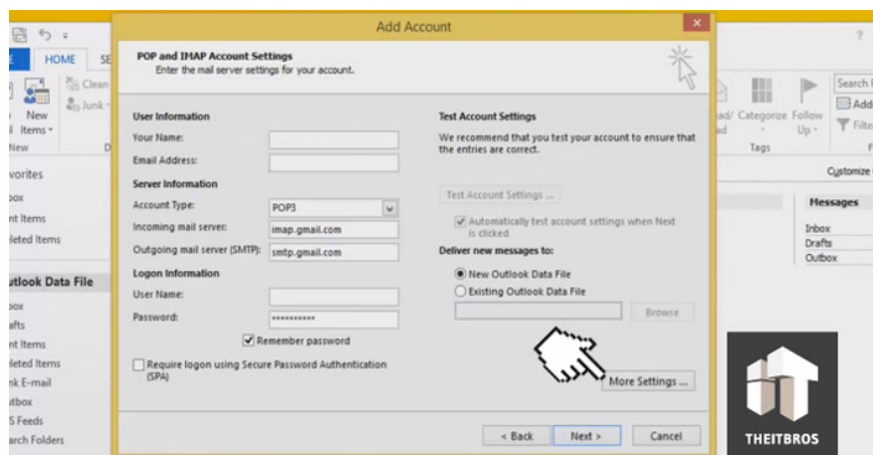
Next go to Start Menu and open the Outlook application on your computer. Click **File** then select **Add Account** .



Enter your name and email address.

In the Account Type section, select **IMAP** and in the Incoming Mail Server section you enter **imap.gmail.com** .

In the Outgoing mail server entry you enter is **smtp.gmail.com** . Then fill in the Logon information section and then click **More Settings** .

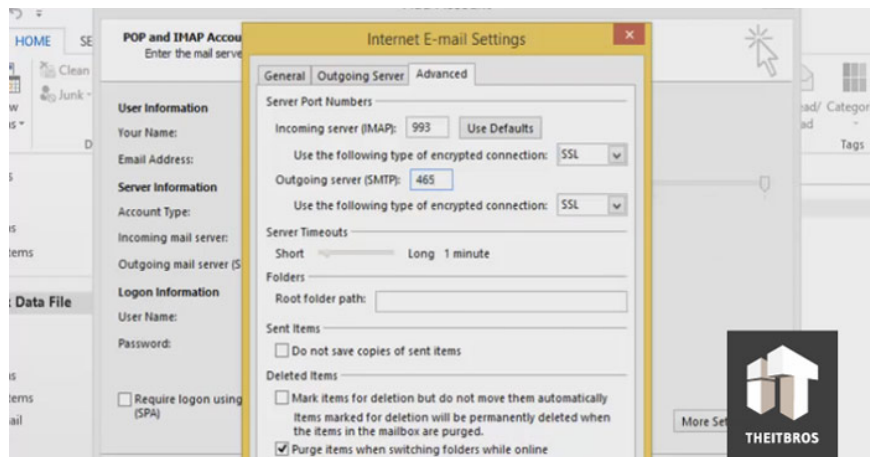


Access the Outgoing Server section and check the **My outgoing server (SMTP) option to require authentication** .

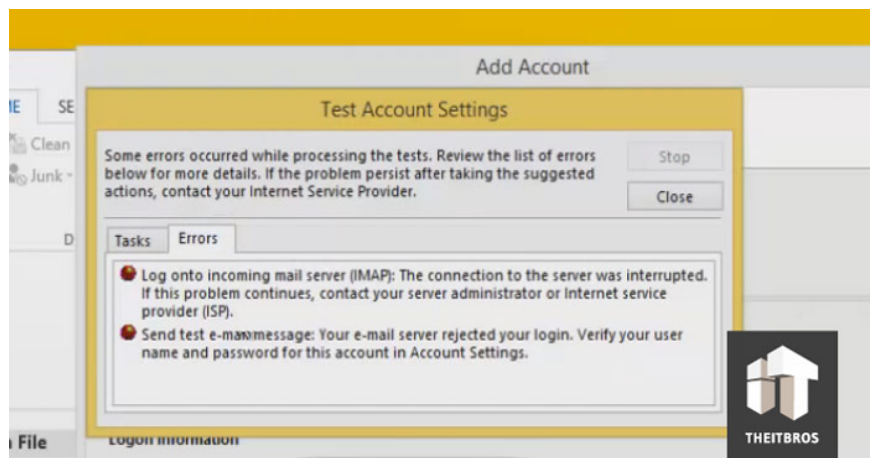
Next go to the **Advanced** tab . At this tab, click on the dropdown menu in **Use the following type of encrypted connection as SSL** .

At the Incoming Server section (IMAP), select the port number of **993**. Similarly in Outgoing Server (SMTP), select the port number of **465** .

Finally click **OK** .



Now that you can see the error still appears, you cannot connect to Gmail. However, this error is not the same as the initial error you encountered.

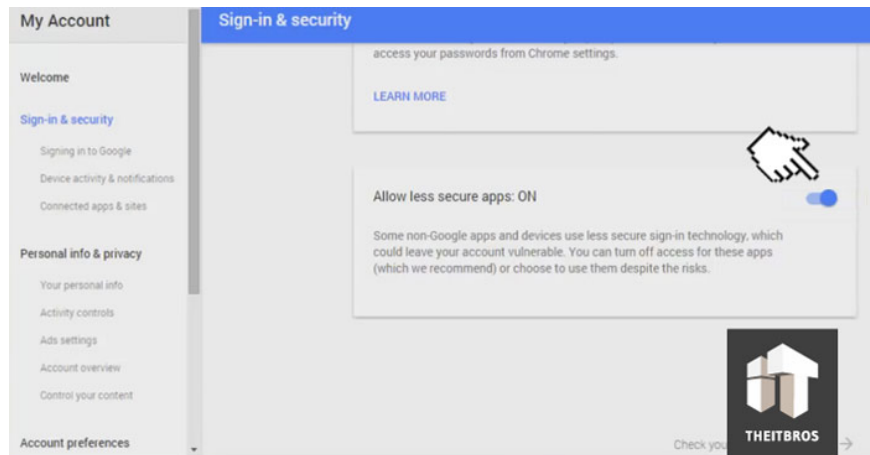


In this case the most likely reason is because you have not activated the Basic Authentication feature of your Gmail account.

To enable this feature on your Gmail account, follow the steps below:

First access your Gmail account then click on the profile picture and select **My account** . Here you scroll down to find and select the **Sign-in & security option** .

On the Sign-in & security interface in the options list on the left pane you select **Connected apps & sites** . Scroll down to the next you will see the **Allow less secure apps option** . Your task is to activate this option.



Once done, you can now connect your Outlook account to your Gmail account.

### Refer to some of the following articles:

1. Outlook 2016 crashes on startup, this is a fix
1. Instructions for sending free SMS via Outlook
1. Instructions for sending free SMS via Outlook

### Good luck!

You finished reading the article "**How to turn on POP / IMAP Gmail to use in Outlook**" edited by the [TipsMake](#) team. We hope this article has provided you with many useful tech tips and tricks. You can search for similar articles on tips and guides. Thank you for reading and for following us regularly.