

How to turn on or turn off the logical pairing with Bluetooth peripherals in Windows 10

Starting with Windows 10 build 17093, Windows allows users to conduct pairing and connecting supported devices with just one click.

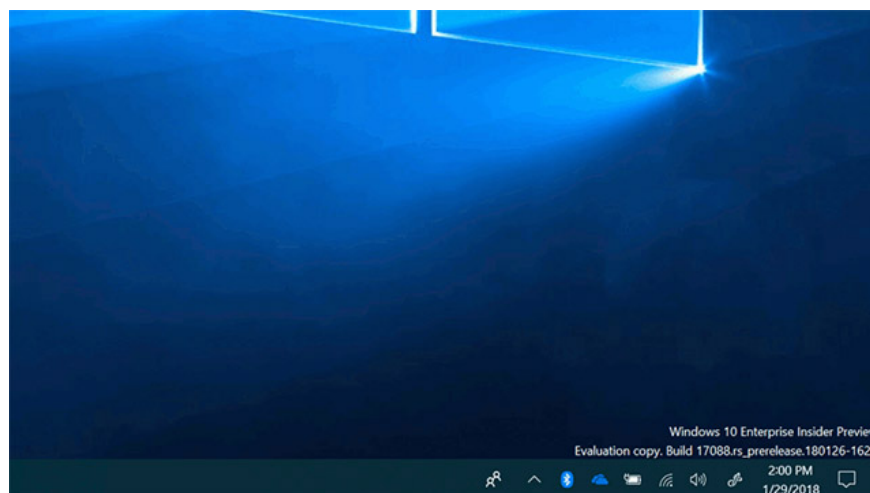
Starting with Windows 10 build 17093, Windows allows users to conduct pairing with supported Bluetooth devices with just one click. When these devices are ready to pair and detected within range, Windows will display notifications to users and allow them to start the pairing process quickly and conveniently. Microsoft would like to thank the Surface Accessories team for working closely with them to create the first device available in the market to support this new experience, which is the Surface Precision Mouse product. Currently, Microsoft is working with many other partners to develop a list of devices that support this new feature. To learn more, you can refer to the Microsoft blog post [here](#).

The steps for users to use and benefit from this feature are:

1. Set the Bluetooth peripheral in pairing mode.
2. If the peripheral is near, Windows will automatically display a notification to the user.
3. Select **Connect** to start pairing.
4. When the external device is no longer in pairing mode or is no longer nearby, Windows will delete the notification from the Action Center.

This article will show you how to enable or disable streamlined pairing to quickly connect to some Bluetooth devices for your user account in Windows 10.

EXAMPLE: Notice for starting pairing through a logical connection to a Bluetooth device in Windows 10:



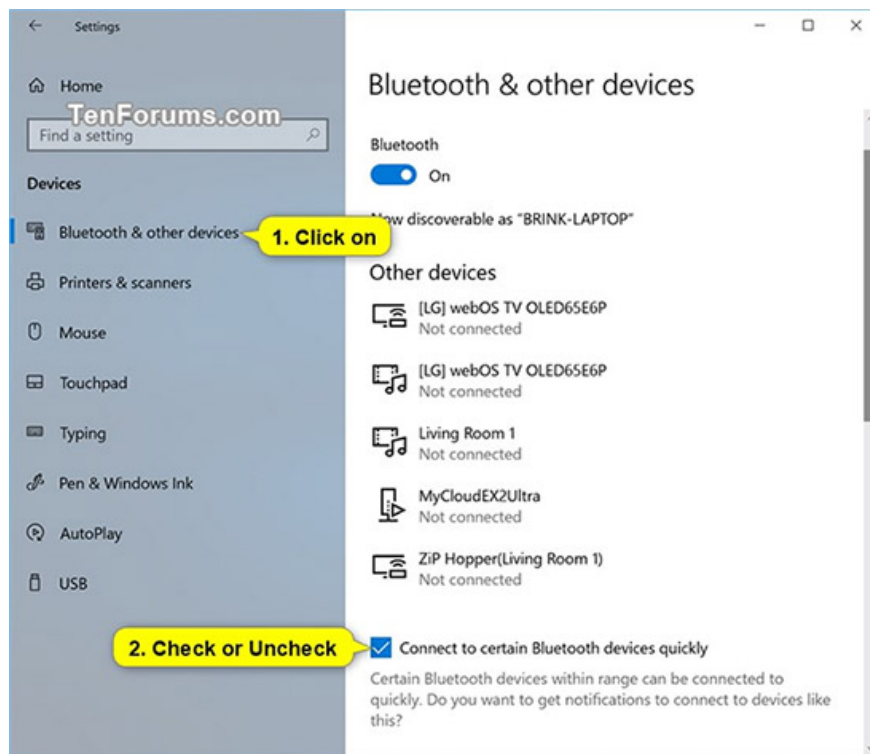
1. How to check the Bluetooth version in Windows 10

Turn on or turn off the logical pairing with Bluetooth peripherals in Settings

Step 1: Open the **Settings** section and click the **Devices** icon.

Step 2: Click on the Bluetooth icon and other devices on the left, then select (enable - by default) or uncheck (turn off) the **Connect to certain Bluetooth devices quickly option** .

Step 3: Now you can close the **Settings** section if you want.



Enable or disable the logical pairing of Bluetooth peripherals with REG files

The downloadable .reg files below will modify the DWORD value in the registry key below:

```
HKEY_CURRENT_USERSoftwareMicrosoftWindowsCurrentVersionBluetooth
```

QuickPair DWORD

0= Off

1= On

First you do one of two steps:

Step 1a : To enable logical pairing with Bluetooth peripheral devices.

(This is the default setting).

Click the link below to download the required reg file and go to step 2.

Turn_ON_Connect_to_certain_Bluetooth_devices_quickly.reg

Step 1b:To turn off the logical pairing with Bluetooth peripherals.

Click the link below to download the required reg file and go to step 2.

Turn_OFF_Connect_to_certain_Bluetooth_devices_quickly.reg

Step 2: Save the downloaded .reg file to your desktop.

Step 3: Double-click the downloaded .reg file to merge it.

Step 4: When prompted, click on **Run** , **Yes** (UAC), **Yes** and **OK** to approve the merging process.

Step 5: Now you can delete the downloaded .reg file if you want.

That's all the steps to do, hopefully this article is useful for you!

See more:

1. How to block Internet connection software, Windows 10 applications
2. The cause of the wrong time on Windows 10 and how to fix it
3. What are the features of Windows 10 Windows Features?
4. 11 ways to start the Performance Monitor performance monitor in Windows

You finished reading the article "**How to turn on or turn off the logical pairing with Bluetooth peripherals in Windows 10**" edited by the [TipsMake](#) team. We hope this article has provided you with many useful tech tips and tricks. You can search for similar articles on tips and guides. Thank you for reading and for following us regularly.