

How to turn on / off Windows Firewall in Windows 7, 8 / 8.1 and Windows 10

How to turn on the Firewall firewall, turn off the firewall in Windows 7, 8, 10, giving you better control over firewall settings on your computer. If you do not know how to do it, you can see the instructions for turning on and off the Windows Firewall firewall below.

Firewall is a software used to filter information to / from your computer or network. All information on your computer will have to go through a firewall, from which the firewall will check the information before it will allow or deny information to the computer. Microsoft has included firewall features into its operating systems such as Windows XP, Vista, Windows 7 and Windows 8.

How to turn on / off the firewall in Windows 10

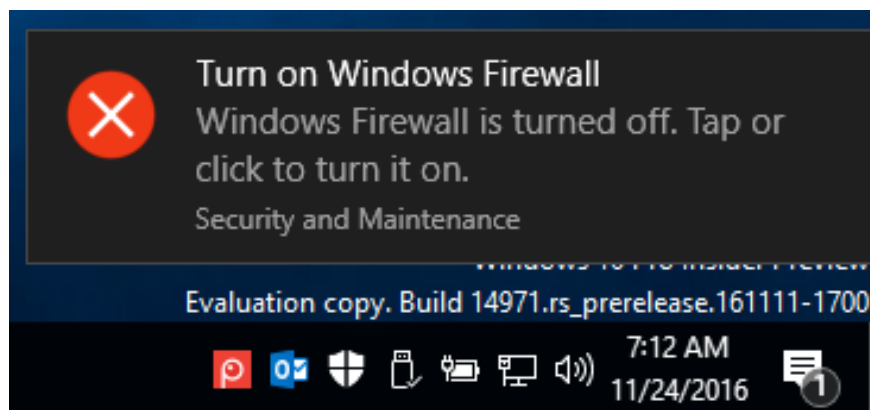
Starting with Windows 10 build 16193, Windows Firewall renamed Windows Defender Firewall. Windows Firewall can help prevent hackers and malware from accessing your computer via the Internet or the network. This tutorial will give you different ways to turn on or turn off the firewall firewall in Windows 10.

To turn on the firewall or turn off, you need to log on to the computer with Admin rights.

Note: Windows Firewall is turned on by default in Windows 10. You should not turn off Windows Firewall unless you have installed and turned on a third-party firewall. Turning off Windows Firewall can make your computer (and network, if any) vulnerable to unauthorized access.

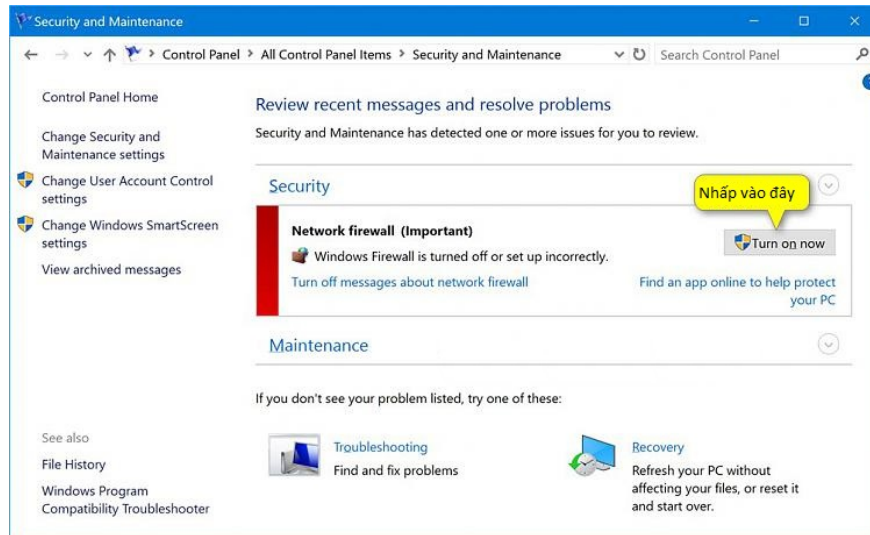
Method 1: Turn on the firewall from the notification

Click the notification (if any) from Windows Firewall to turn on Windows Firewall for all network configurations.



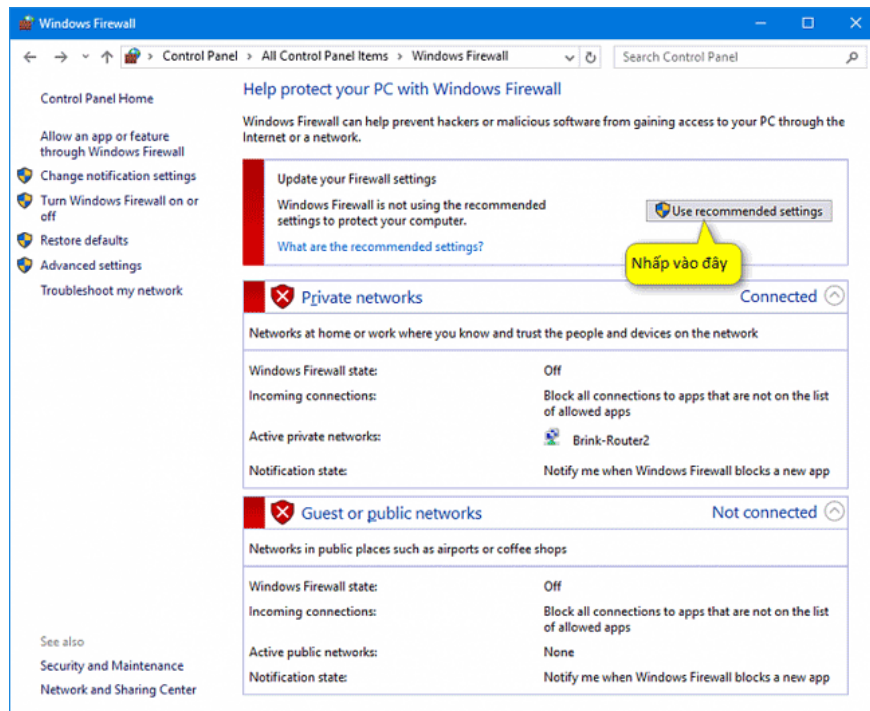
Method 2: Turn on the firewall in Security and Maintenance

1. Open **Control Panel > Security and Maintenance**
2. In the **Security** tab, the **Network firewall** section click **Turn on now**.

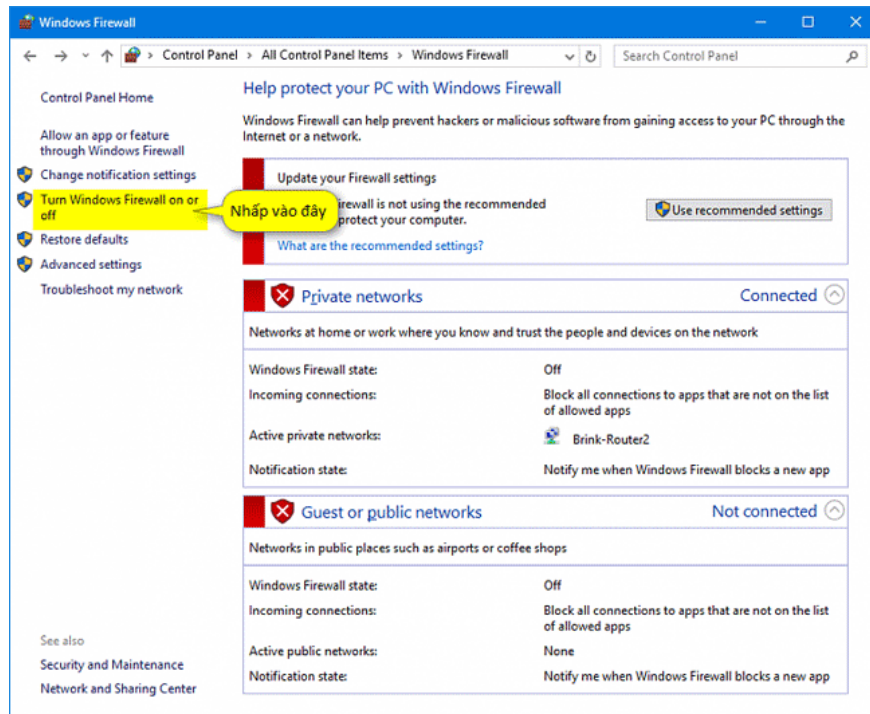


Method 3: Turn on / off the firewall in Windows Firewall Settings

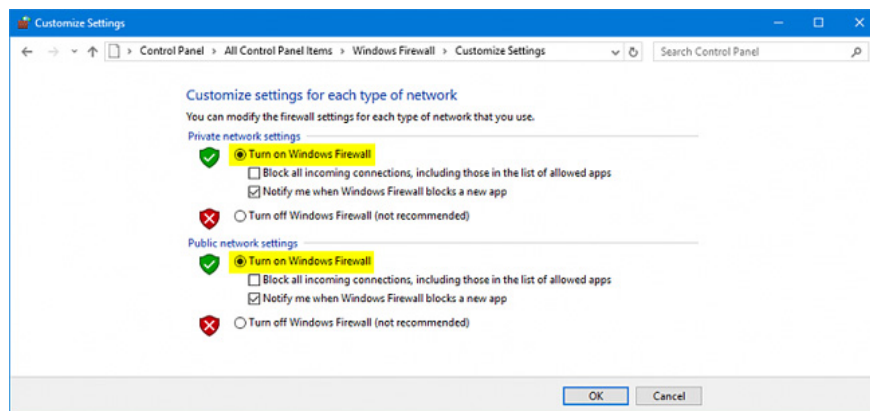
Open **Control Panel > Windows Firewall > Click Use recommended settings** if you want to turn on the firewall.



Click **Turn Windows Firewall on or off** on the left panel:



Here you will have the option to enable or disable the firewall for both Private and Public networks, select the one you want and click OK.

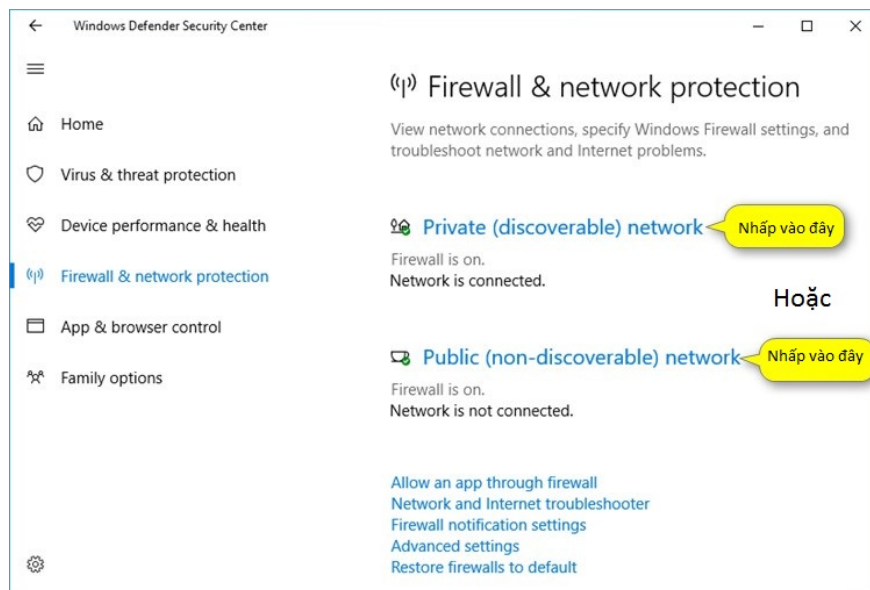


Method 5: Turn on / off the firewall in Command Prompt:

Refer to the detailed instructions in the article: Instructions to enable / disable Windows Firewall with Command Prompt

Method 6: Turn on / off the Windows 10 firewall in Windows Defender Security

Open **Windows Defender Security Center** > **Firewall & network protection** > click on **Private (discoverable) network** or **Public (non-discoverable) network** , depending on which network firewall you want to turn off or on, then just turn it on On or Off under Windows Firewall is OK. More careful you can choose to block / unblock connections to **incoming connections** .

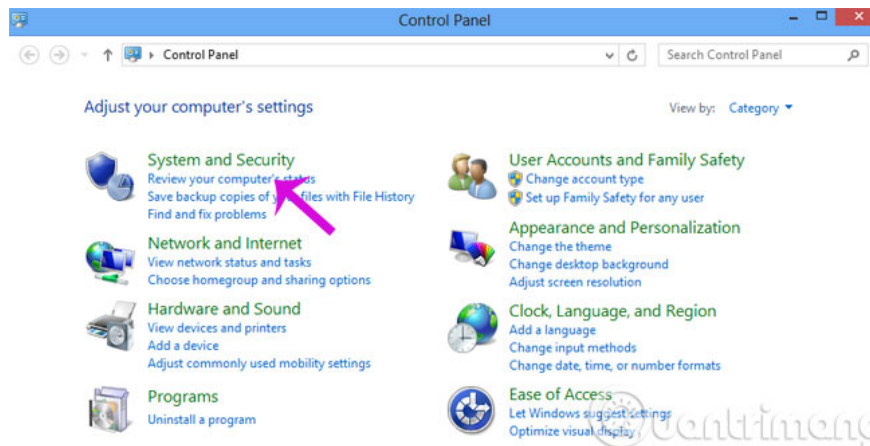


Turn on / off the firewall in Windows 7

Below, we will guide you to configure the firewall in Windows 7:

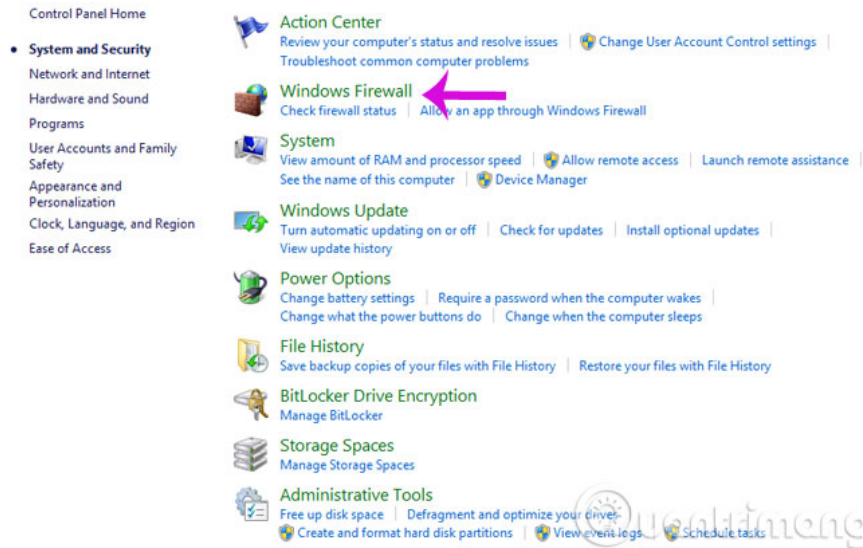
Step 1:

You must log on to the computer with administrative rights, access the **Start path**> **Control Panel** > **System and Security** .



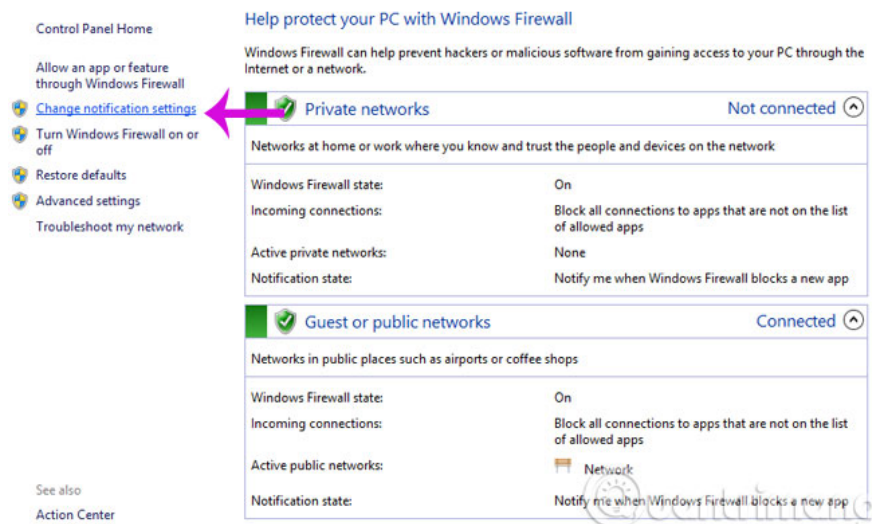
Step 2:

In the **System and Security** window, click **Windows Firewall** .



Step 3:

In the left column of the interface, select **Change notification settings** to adjust firewall settings.



Step 4:

Here, you can optionally enable or disable the Firewall for both **Private** and **Public network** modes

Customize settings for each type of network

You can modify the firewall settings for each type of network that you use.

Private network settings 1

- Turn on Windows Firewall
 - Block all incoming connections, including those in the list of allowed apps
 - Notify me when Windows Firewall blocks a new app
- Turn off Windows Firewall (not recommended)

Public network settings 2

- Turn on Windows Firewall
 - Block all incoming connections, including those in the list of allowed apps
 - Notify me when Windows Firewall blocks a new app
- Turn off Windows Firewall (not recommended)



Step 5:

To install according to Windows recommended mode, you can click **Use recommended settings**.

Help protect your PC with Windows Firewall

Windows Firewall can help prevent hackers or malicious software from gaining access to your PC through the Internet or a network.

Update your Firewall settings

Windows Firewall is not using the recommended settings to protect your computer.

[What are the recommended settings?](#)

Use recommended settings

Private networks Not connected

Guest or public networks Connected

Or, return to the original default, select **Restore default** and click **Yes** when there is a confirmation message

Restore default settings

Restoring default settings will re... locations. This might cause som...

Restore defaults

Restore Defaults Confirmation

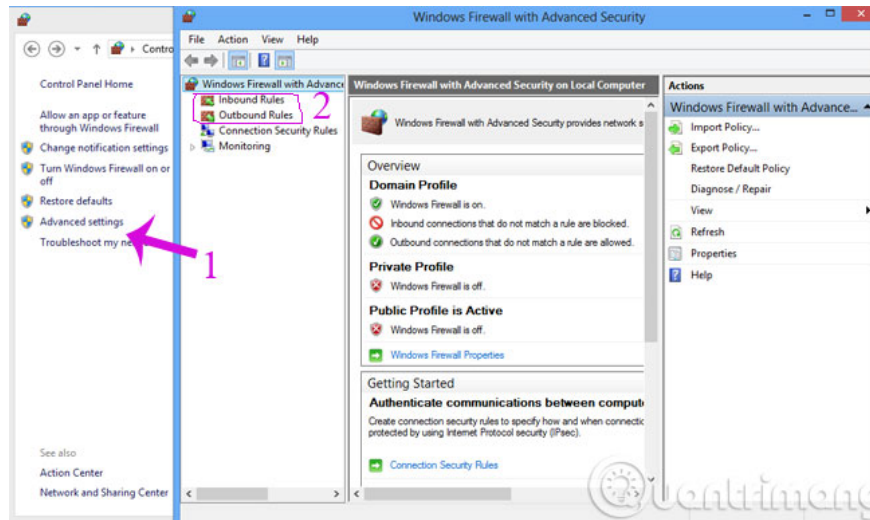
Restoring the default settings will delete all settings of Windows Firewall that you have made since Windows was installed. This may cause some apps to stop working

Do you want to continue?

Yes **No**

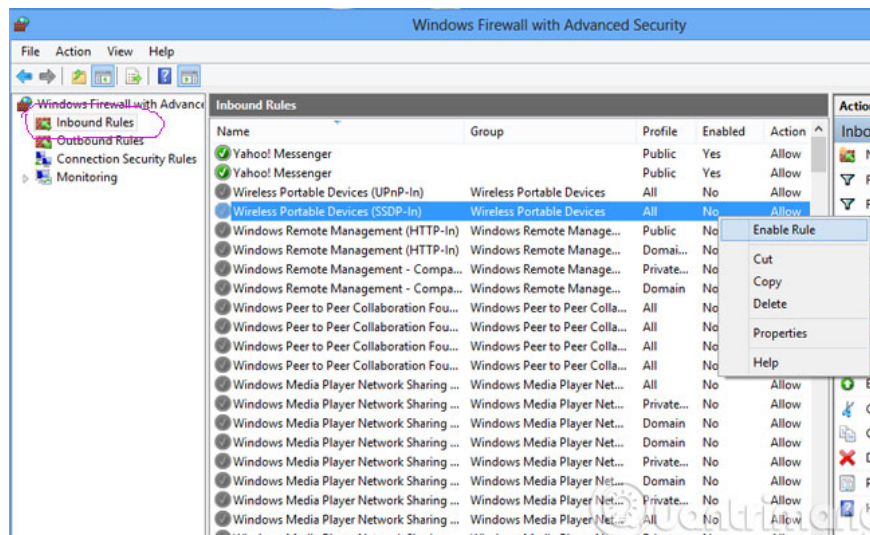
Step 6:

If you are an expert, you can use **Advance Setting** to configure the firewall for inbound and outbound information flow depending on your needs.

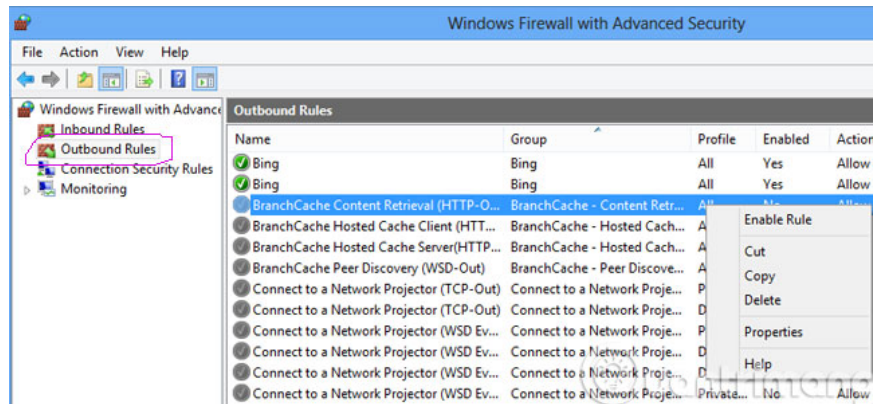


Step 7:

When you click on **Inbound Rules** on the left, you will see a list of **Inbound Rules** displayed. You can enable or disable any connection you want by right-clicking and selecting **Enable Rule / Disable Rule**

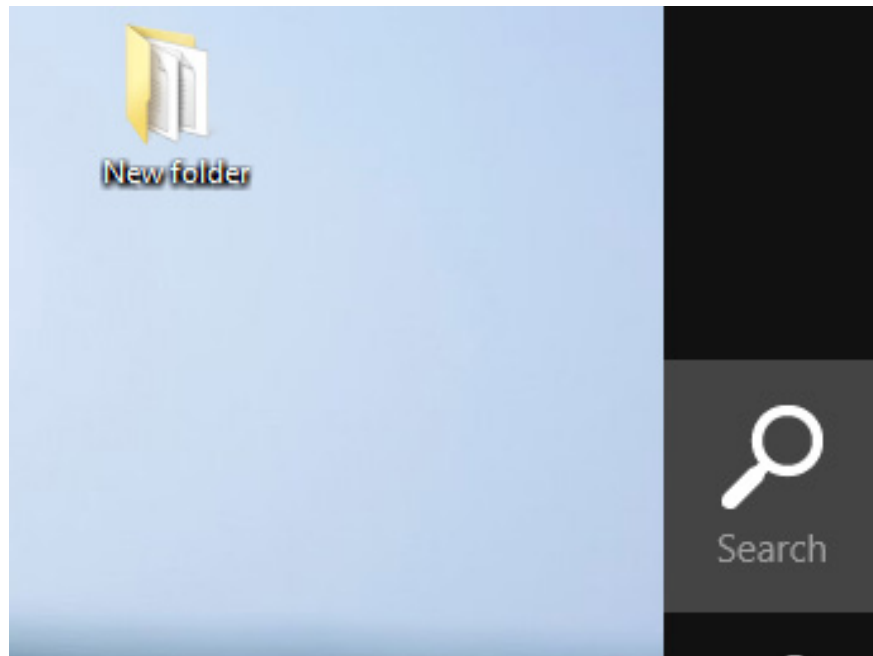


Do the same for **Outbound Rules** for outgoing flows.

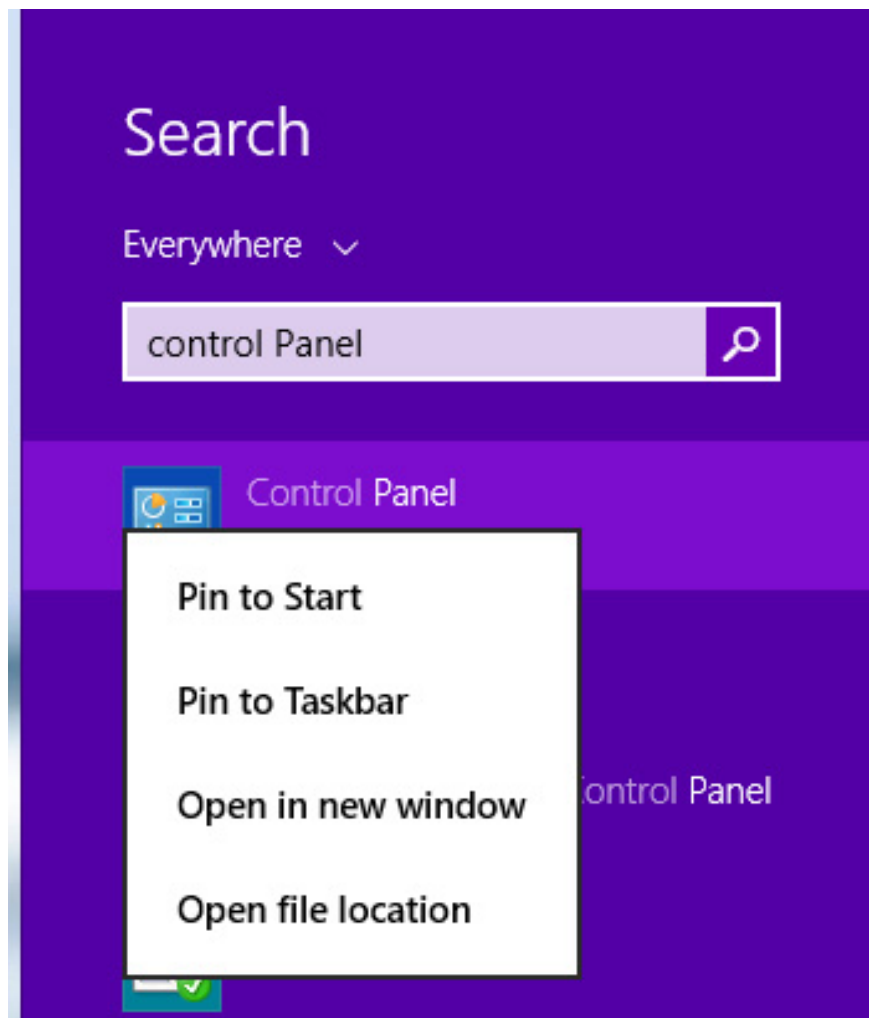


Turn on / off the firewall in Windows 8 / 8.1

You click on **Control Panel** on the screen, if not, then hover your mouse on the top right corner, until the magnifying glass icon appears as shown:



Enter Control Panel and click the icon shown below to open Control Panel, if you want to pin to Start menu or Taskbar, right-click the Control Panel icon and select the corresponding option.



In the Control Panel you find and click on Windows Firewall, the Windows Firewall window appears with the same options as on Windows 7 (the image in step 3 above), you can follow the instructions in the wall switch. fire on Windows 7 to turn off the firewall in Windows 8, as well as change the relevant firewall settings.

1. Activate the Firewall mode in Mac OS X Snow Leopard
2. 10 tips to help Windows security
3. Instructions for configuring firewalls on Ubuntu

Good luck!

You finished reading the article "**How to turn on / off Windows Firewall in Windows 7, 8 / 8.1 and Windows 10**" edited by the [TipsMake](#) team. We hope this article has provided you with many useful tech tips and tricks. You can search for similar articles on tips and guides. Thank you for reading and for following us regularly.