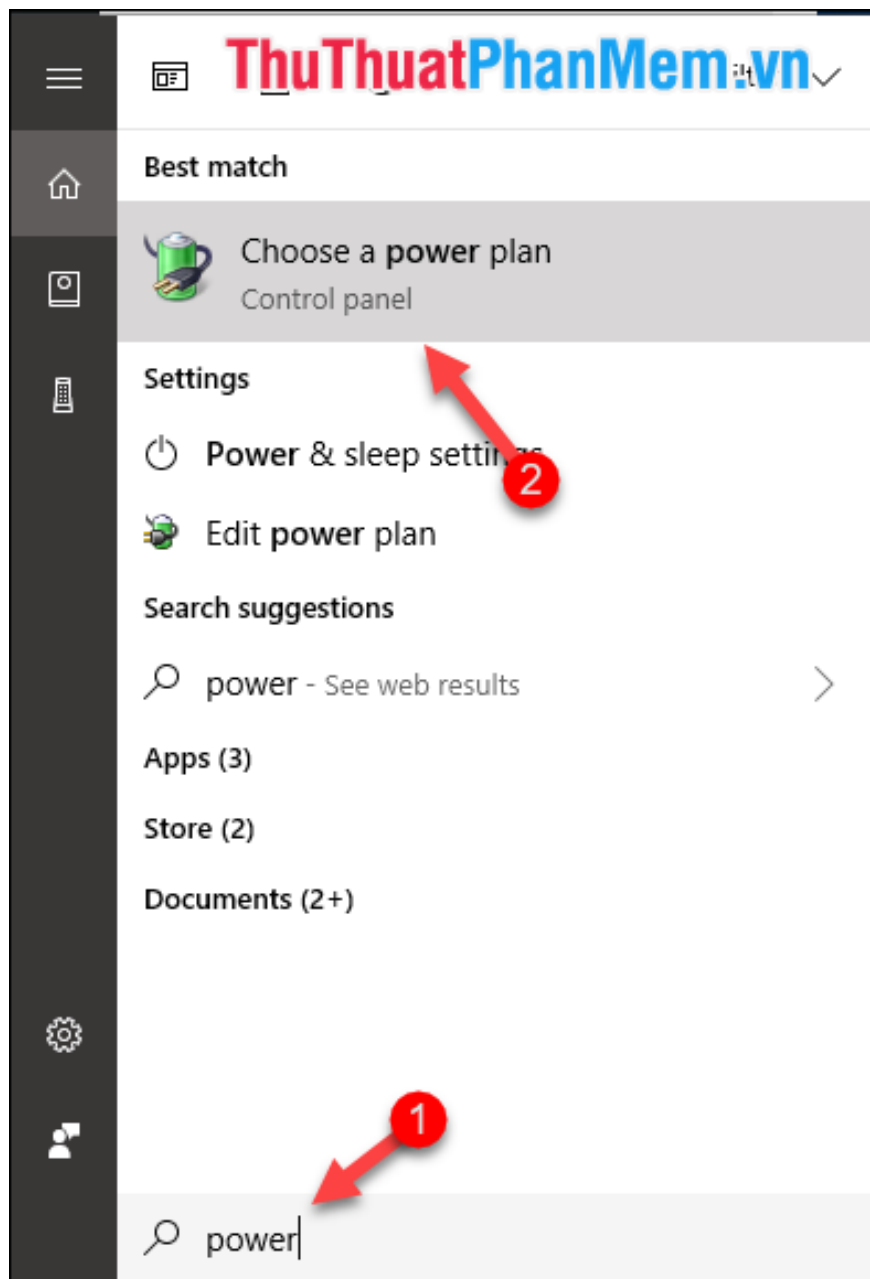


How to turn on Hibernate mode in Windows 10

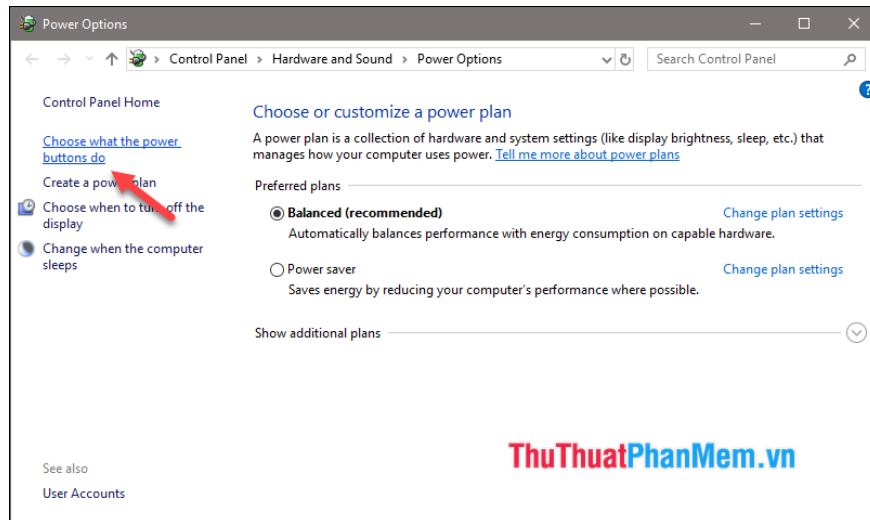
How to turn on Hibernate mode on Windows 10. Hibernate mode (hibernation) is a very good mode on Windows computers. Basically, the Hibernate feature will allow all data currently on the RAM to be written to the hard drive before shutting down.

Hibernate mode (hibernation) is a very good mode on windows computers. Basically, the Hibernate feature will allow all data currently on the RAM to be written to the hard drive before shutting down. So when the computer is rebooted, all data will be loaded back from the hard drive to RAM so users can continue the unfinished work before turning off the computer quickly. However, by default, the Hibernate feature is hidden and cannot be used. In this article, TipsMake.com will guide you how to turn on Hibernate mode on windows 10 with just a few simple steps.

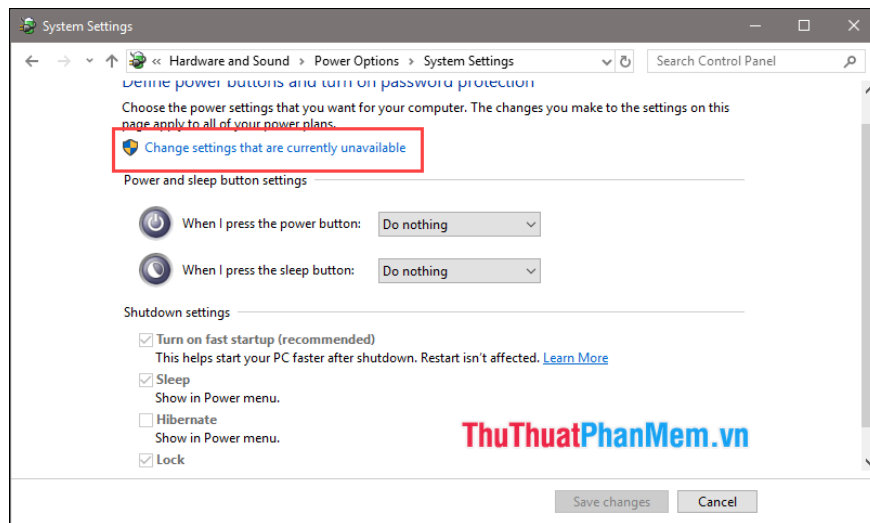
Step 1: Open the search function, then enter Power and select **Choose a power plan** when the results appear.



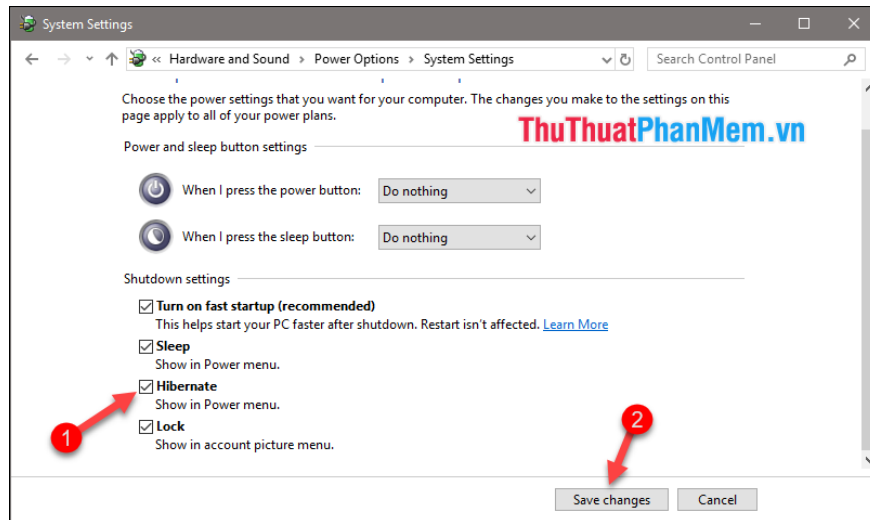
Step 2: In the new window select **Choose what the power buttons do**



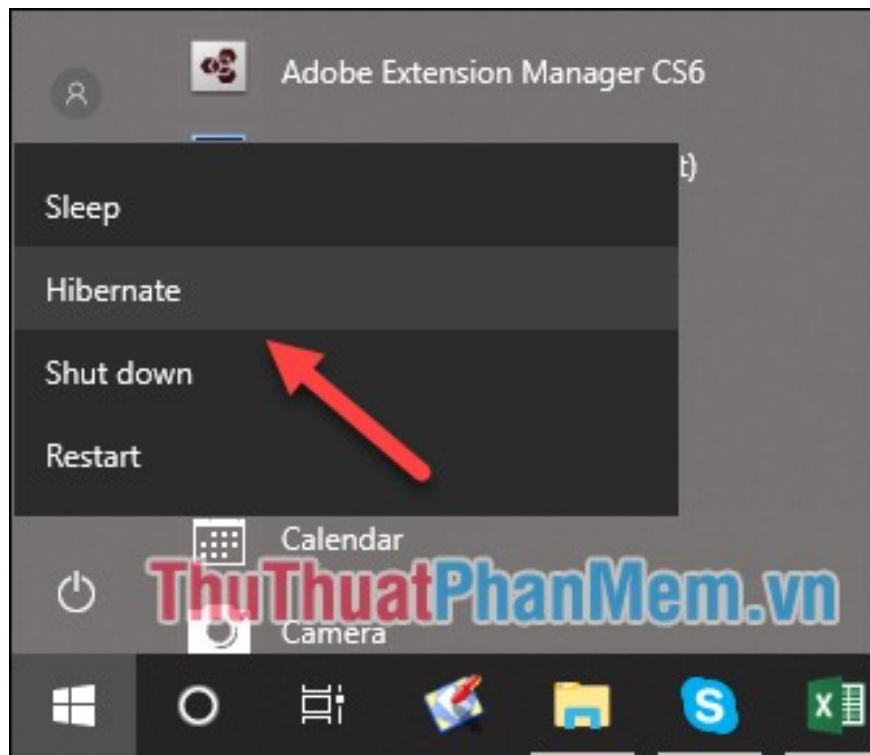
Step 3: Next, select **Change settings that are currently unavailable**



Step 4 : In the new window, scroll down and select the **Hibernate** box to enable hibernation. Finally, click **Save changes** to save the settings.



After activating, you can check by selecting the Power button and you will see the **Hibernate** feature has appeared



So we have successfully enabled the Hibernate feature in windows 10 with just a few simple steps. Thank you for watching the article!

You finished reading the article "**How to turn on Hibernate mode in Windows 10**" edited by the [TipsMake](#) team. We hope this article has provided you with many useful tech tips and tricks. You can search for similar articles on tips and guides. Thank you for reading and for following us regularly.