

How to turn on Chromecast in Microsoft Edge Chromium

Chromecast feature in Microsoft Edge Chromium has been disabled. So how to activate Chromecast in Microsoft Edge Chromium?

To show content from a computer to a TV or to other devices we can use Chromecast. This helps users minimize the use of complex plug-in wires. The Chromecast feature appears on the Google Chrome browser first and is now the new Microsoft Edge Chromium browser. Since Windows 10 is equipped with Miracast, the old Microsoft Edge browser cannot use Chromecast.

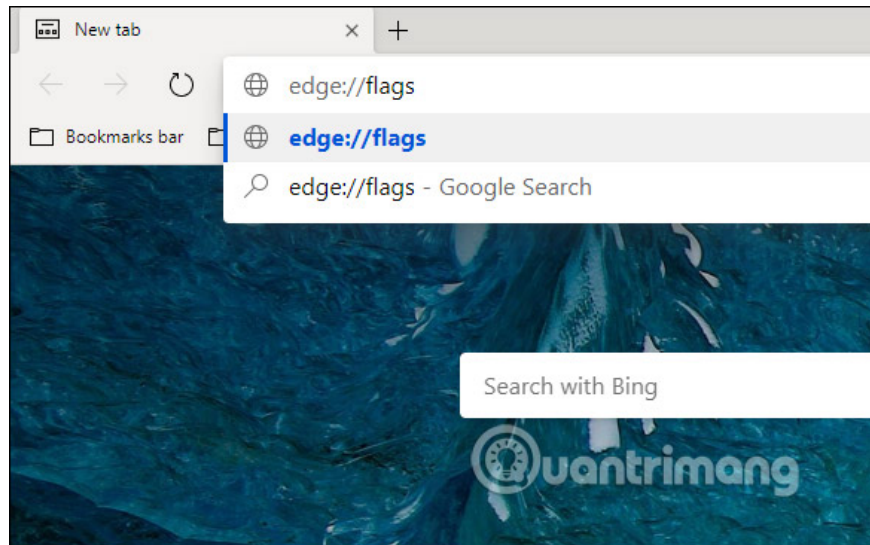
However, the Chromecast feature has been disabled in the browser, so users must re-enable it manually. The following article will guide you how to turn on Chromecast on Microsoft Edge Chromium browser.

1. How to project a computer screen to a TV with Chromecast
2. How to share Windows 10 Mobile screen on PC via WiFi
3. How to connect laptop to TV via HDMI port
4. How to use 2 screens on a computer

Instructions to turn on Chromecast on Edge Chromium

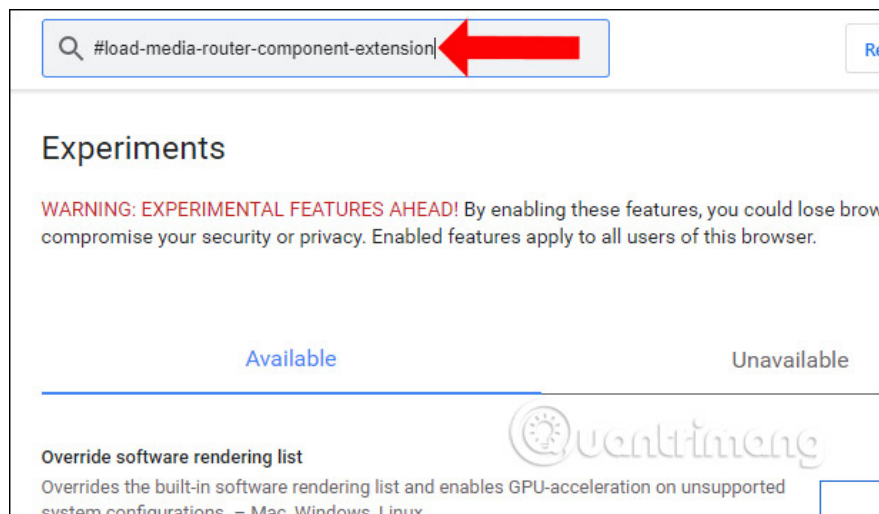
Step 1:

First, users need to set up Chromecast to connect to the same network as the computer. In the Microsoft Edge Chromium browser interface, at the access bar the address you enter **edge://flags** .

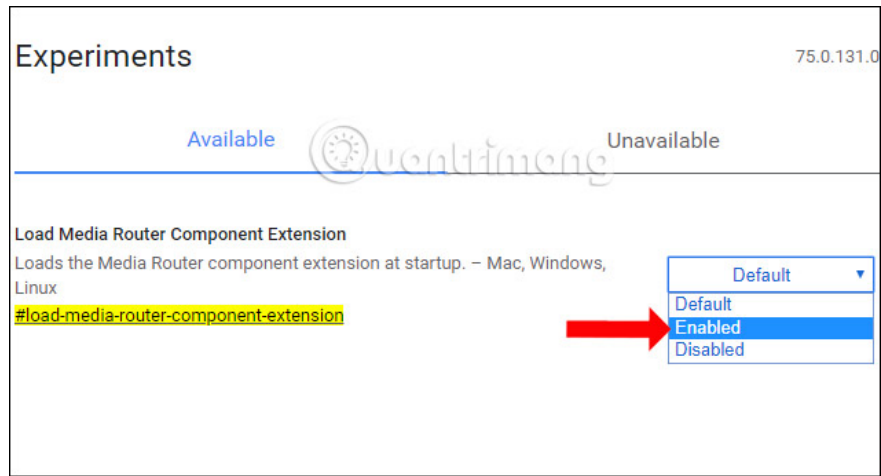


Step 2:

Display the new interface, enter the keyword **#load-media-router-component-extension**.

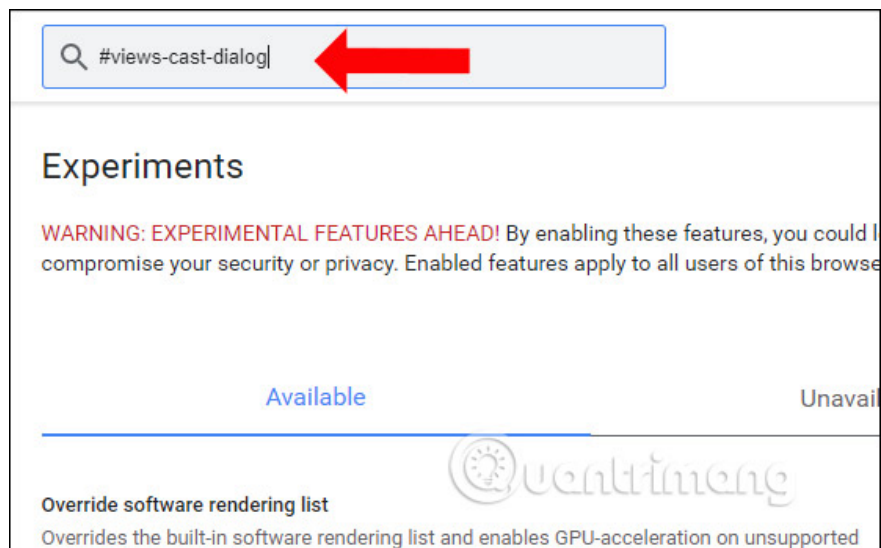


Display this feature, users need to switch to **Enabled activation** mode.

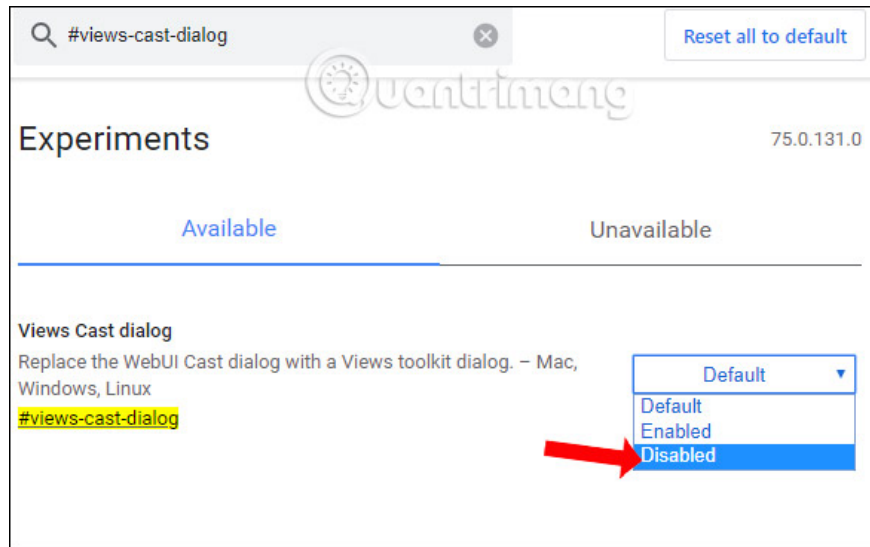


Step 3:

Continue back to the search bar to enter **keywords # views-cast-dialog** .

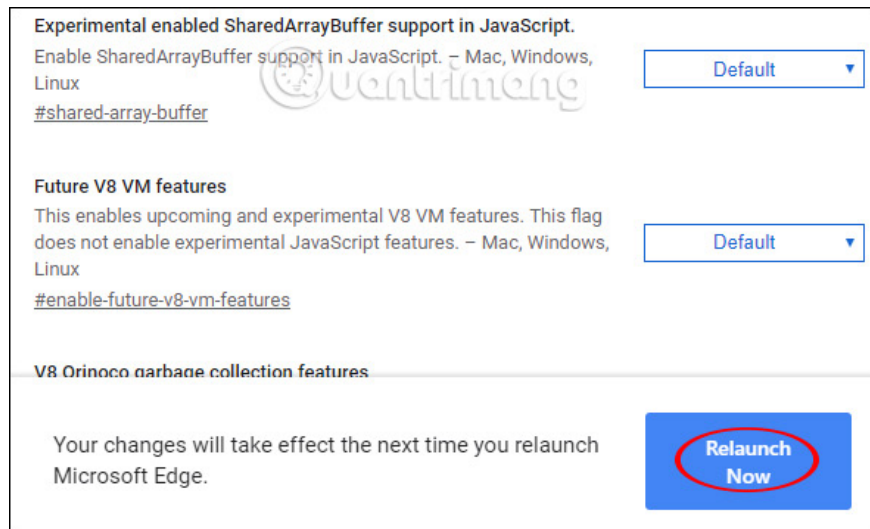


Then you need to switch from **Default to Disabled mode** .

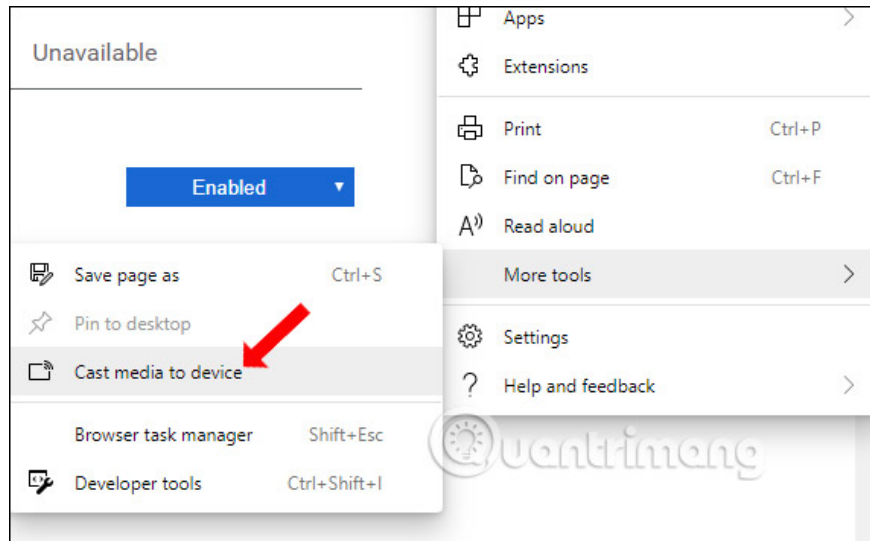


Step 4:

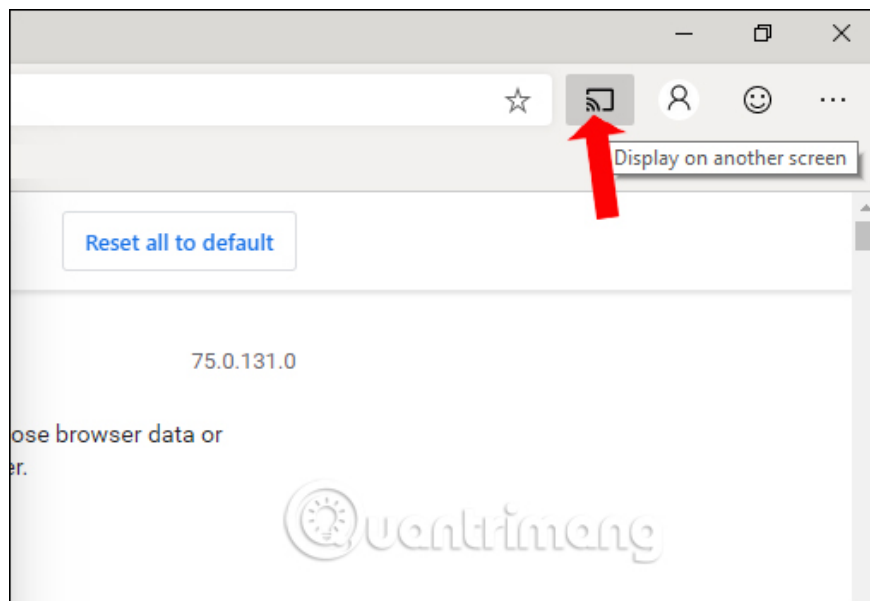
Finally press **Relaunch Now** to restart the browser.



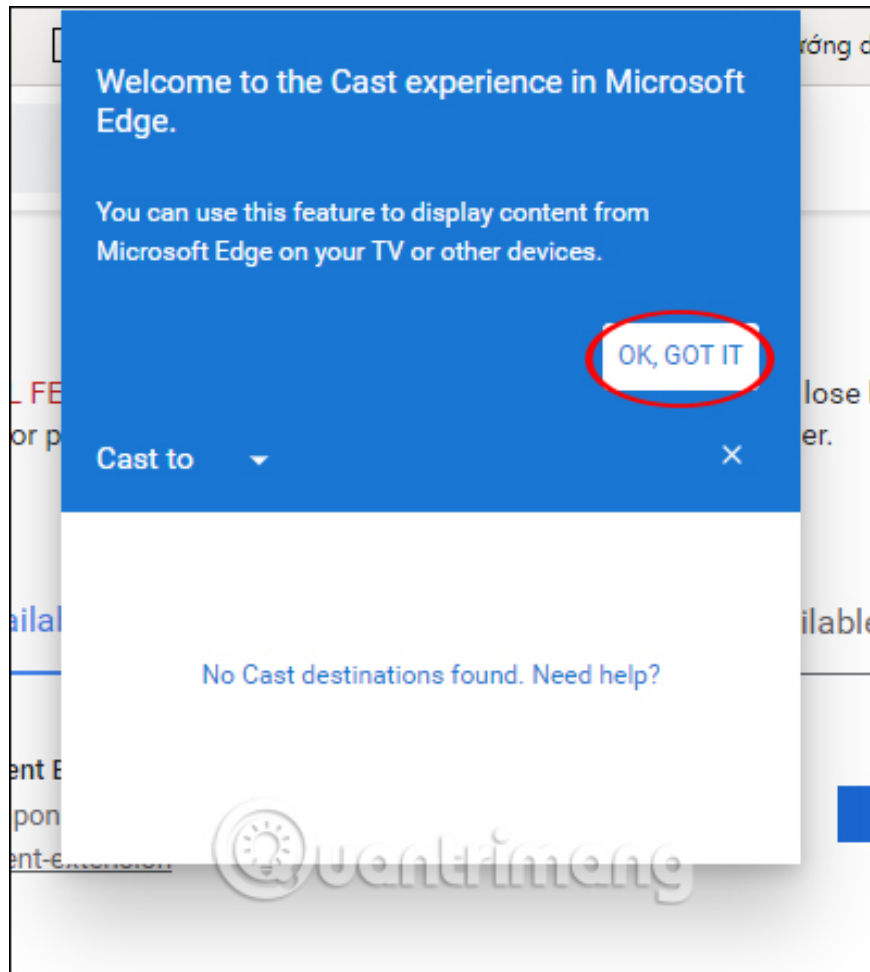
When the Microsoft Edge Chromium restarts, click **the 3 dots icon** on the browser toolbar, then select the **More tools** and click **Cast media to device** .



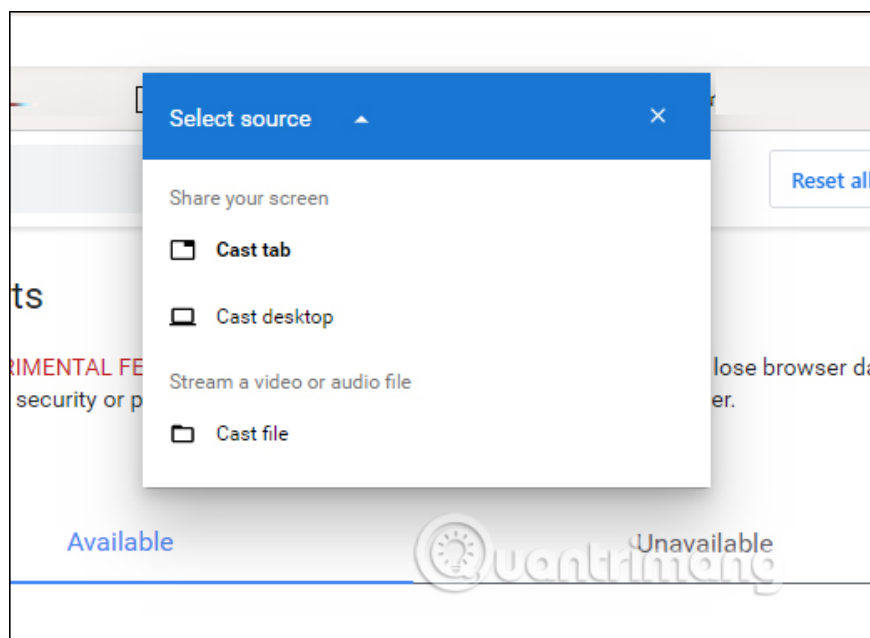
Immediately **the Chromecast icon** displays in the toolbar as shown below.



On the browser interface also informed about Chromecast, click **OK, Got It**.



A smaller dialog box appears, click on **the Cast to arrow** to select the content you want to share. Here the user has the option to share the website tab screen, computer screen or media file slideshow.



Compared to the old Edge browser, limited use of Chromecast, users can easily activate and connect to different devices with Microsoft Edge Chromium. Using Chromecast on Edge Chromium is similar to Chrome.

I wish you all success!

You finished reading the article "**How to turn on Chromecast in Microsoft Edge Chromium**" edited by the [TipsMake](#) team. We hope this article has provided you with many useful tech tips and tricks. You can search for similar articles on tips and guides. Thank you for reading and for following us regularly.