

# How to turn on Bluetooth on Win 10

Many Windows computers have Bluetooth connectivity, which you can use to connect most of your devices. Here's a step-by-step guide on how to turn on Bluetooth on Windows 10.

Many Windows computers have Bluetooth connectivity, which you can use to connect most of your devices, such as smartphones, speakers, headsets, printers, etc.

If you don't have the Bluetooth feature, you can always use Bluetooth adapter. It's a economical way to get Bluetooth connectivity for devices and is easy to set up.

However, Bluetooth tends to reduce the device's battery life when used and its use comes with some security risks. Readers can find more information in the article: [Learn about Bluetooth technology](#).

Here's a step-by-step guide on how to turn on Bluetooth on Windows 10.

## How to turn on Bluetooth on Windows 10?

1. How to turn on Bluetooth on Win 10
  1. Use Windows Settings
  2. Turn on Bluetooth in Action Center
  3. Use Swift Pair
  4. Turn on Bluetooth from Airplane mode setting
  5. Use Cortana
2. What to do if Bluetooth doesn't work on Windows 10?
  1. Make the system discoverable
  2. Reposition the device
  3. Disable other Bluetooth devices
  4. Read the Event Log
  5. Check for Windows Update
  6. Run Bluetooth Troubleshooter

## How to turn on Bluetooth on Win 10

There are 5 methods you can use to turn on Bluetooth on Windows 10

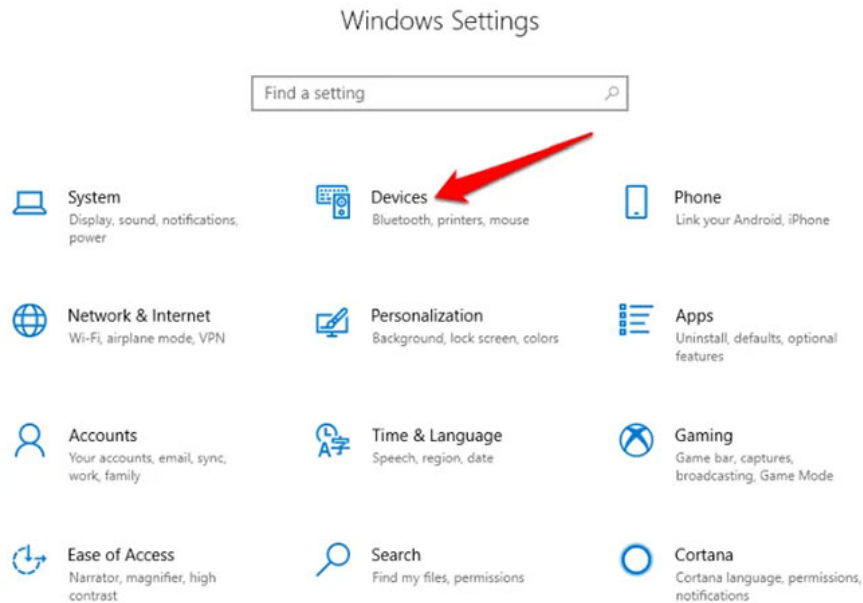
1. Use Windows Settings
2. Turn on Bluetooth from Action Center
3. Use Swift Pair
4. Turn on Bluetooth from Airplane mode setting

## 5. Use Cortana

### 1. Use Windows Settings

The first step before using a Bluetooth device is to configure Bluetooth settings in Windows 10. To do this, access the **Settings** app in Windows 10 by clicking the **Start** button , then clicking the **Settings** icon .

Next, click on **Devices**.



Click on Devices

Click on **Bluetooth & Other Devices** .

**Note** : If the **Bluetooth** switch isnot available on the **Bluetooth & Other devices settings** , that Windows computer may not have the Bluetooth feature or the related hardware unrecognized.

Click **More Bluetooth options** in the **Related Settings** section to get more Bluetooth settings.

# Bluetooth & other devices

Related settings

[Devices and printers](#)

[Sound settings](#)

[Display settings](#)

[More Bluetooth options](#)

[Send or receive files via Bluetooth](#)

## Have a question?

[Fixing Bluetooth connections](#)

[Reinstalling Bluetooth drivers](#)

[Sharing files over Bluetooth](#)

[Get help](#)

## Make Windows better

[Give us feedback](#)

Click More Bluetooth options

You can expand the window to see the options on the menu on the right.

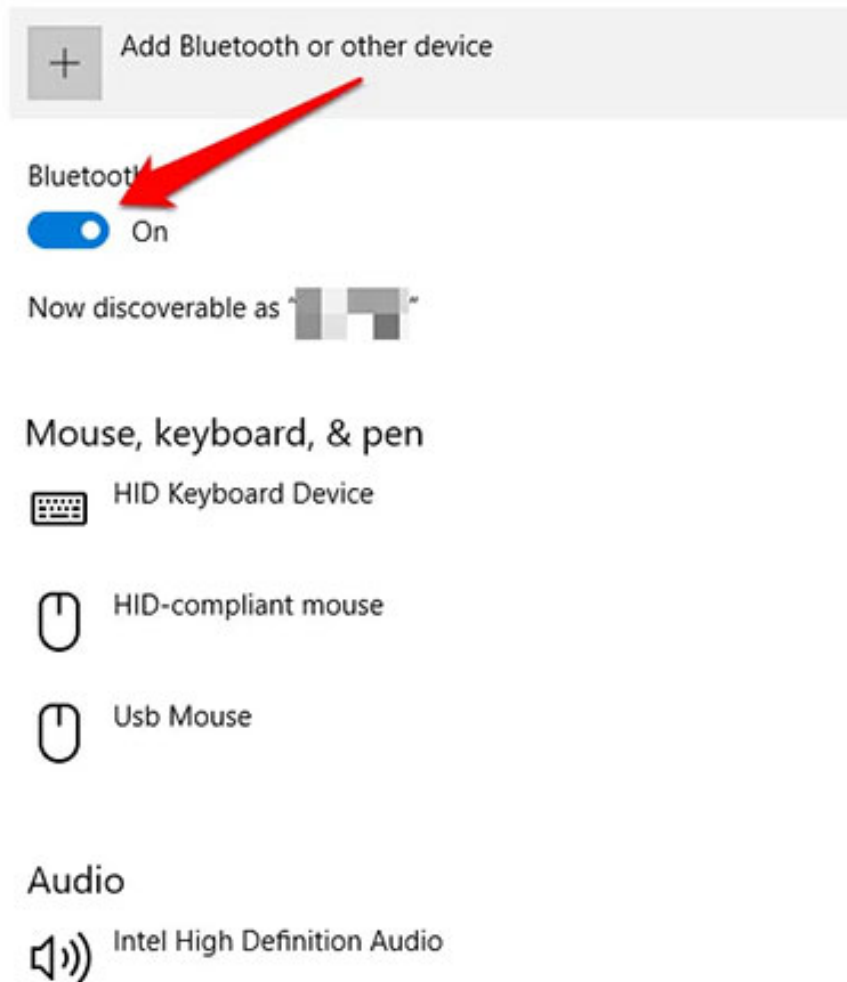
## 2. Turn on Bluetooth in Action Center

Action Center in Windows 10 gives you access to quick settings and actionable app notifications.

1. You can find the **Action Center** icon on the taskbar at the bottom right of the screen.
2. When you click it, you'll see quick settings and app notification icons. Click **All Settings**.
3. Next, click on **Devices**.

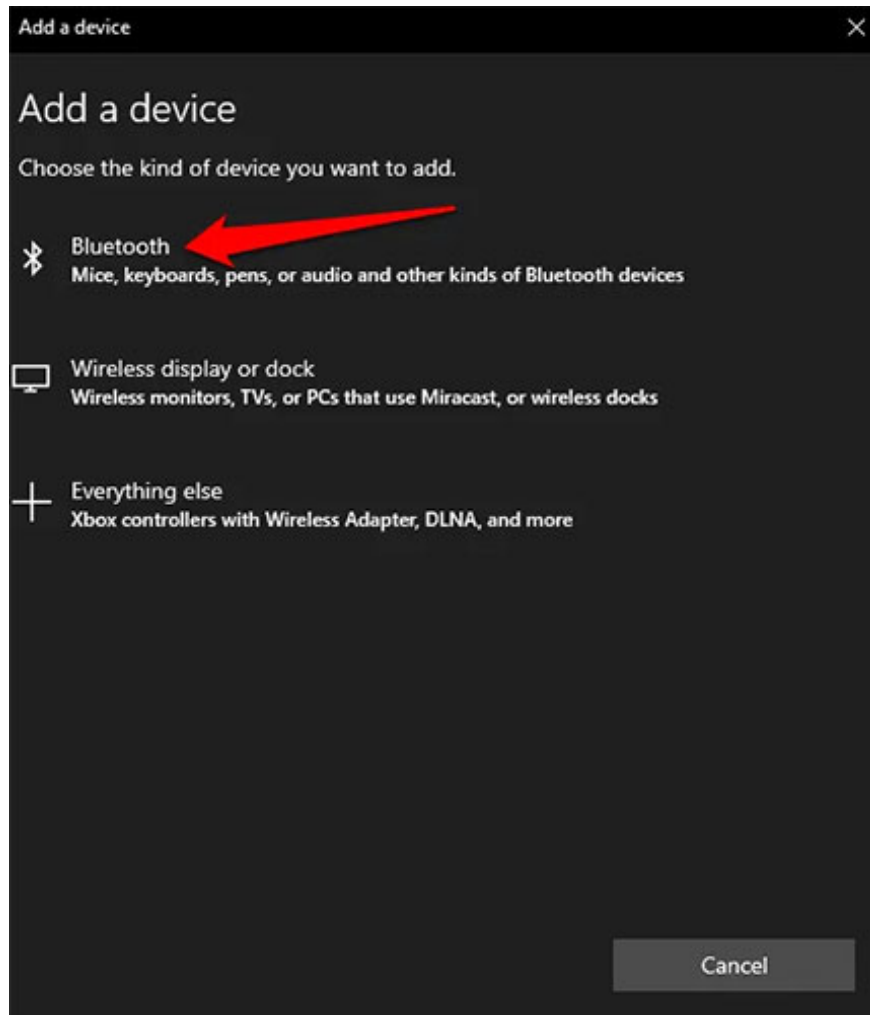
4. Click **Bluetooth** and other devices on the left hand side.
5. Toggle the **Bluetooth** slider to the **On** position .

## Bluetooth & other devices



Toggle the Bluetooth slider to the On position

1. Click **Add Bluetooth or other device** .
2. Click on **Bluetooth**. Windows will start searching for available Bluetooth devices.



Click Bluetooth to start searching for available Bluetooth devices

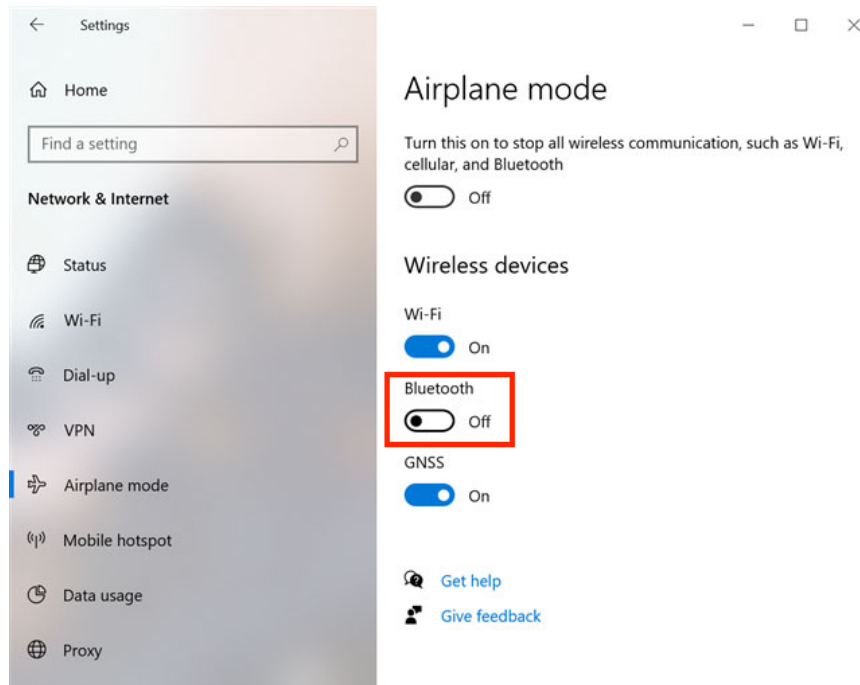
### 3. Use Swift Pair

For details on how to enable and use Swift Pair on Windows 10, read the article: [How to enable Swift Pair feature on Windows 10](#) for more details.

### 4. Turn on Bluetooth from Airplane mode setting

Windows 10 Bluetooth also has a switch in the settings for Airplane mode. Use Win+ I to open Settings and click or click on **Network & Internet** .

Go to the **Airplane mode** tab from the left column. On the right, in the **Wireless devices** section , you can see a Bluetooth on / off switch. Click it to switch to the **On** position .



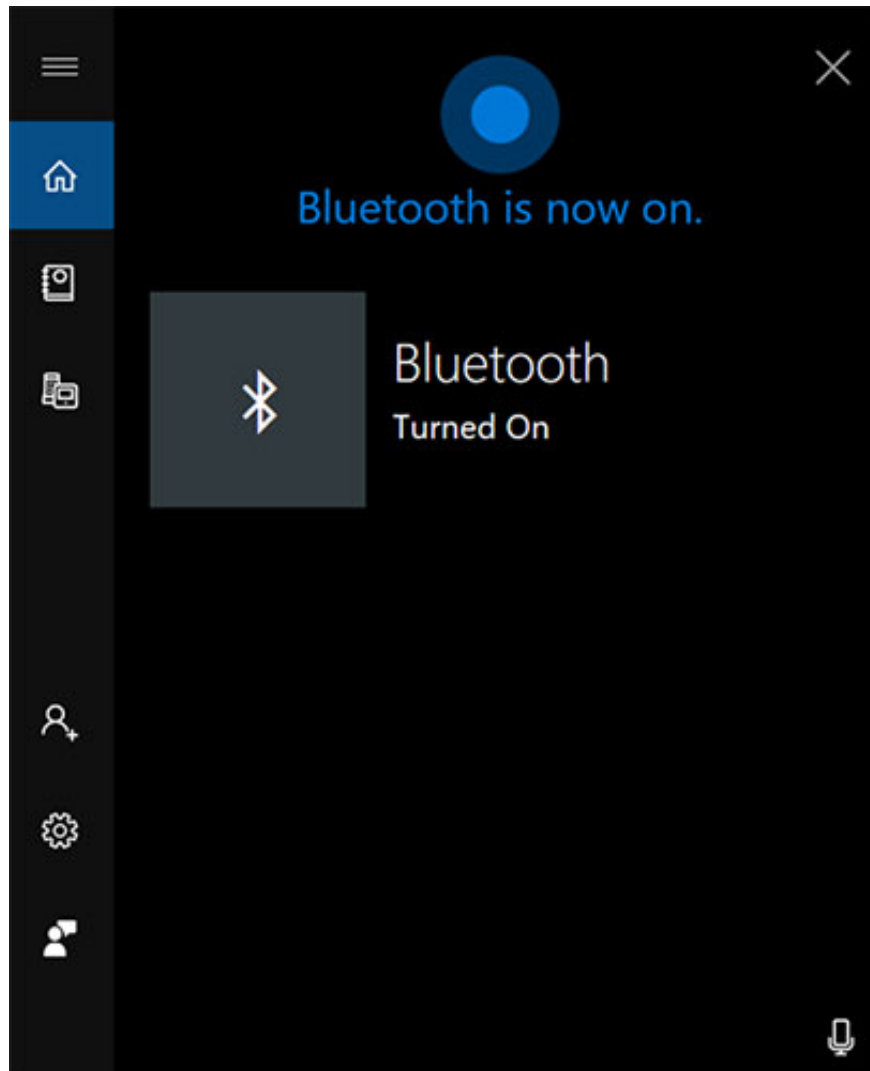
In the Wireless devices section, you can see a Bluetooth on / off switch

When this switch is set to **On** , you can start connecting other devices to Windows 10 via Bluetooth. Click it again if you want to turn off Bluetooth.

**NOTE** : The Bluetooth switch in the Airplane mode tab works regardless of whether Airplane mode is enabled or not. However, turning on Airplane mode will turn off Bluetooth by default in Windows 10.

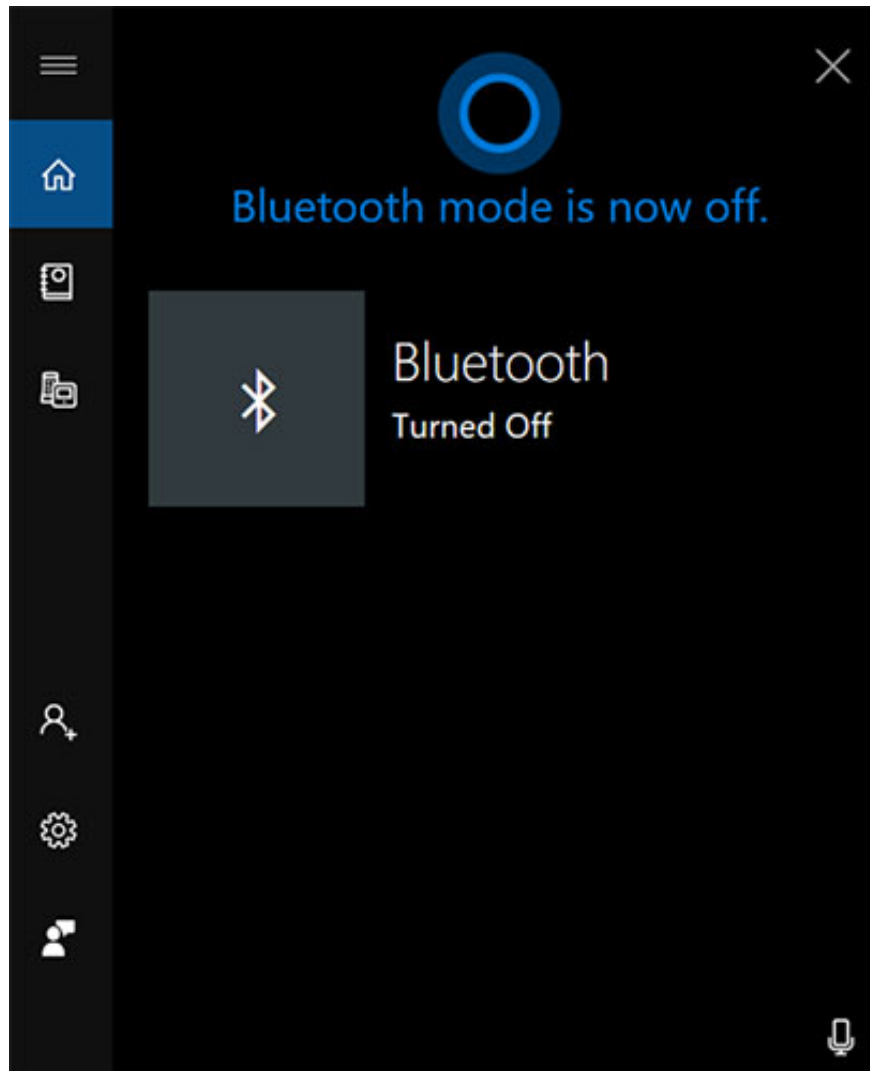
## 5. Use Cortana

You can also ask Cortana, Microsoft's virtual assistant, turn on Windows 10 Bluetooth. Make sure Cortana can hear you and say *"turn on Bluetooth"*, *"enable Bluetooth"*, *"start Bluetooth"* or *"activate Bluetooth"* . Cortana will turn on Bluetooth and let you know it has completed the task.



Cortana turns on Bluetooth

To turn off Bluetooth Windows 10 with Cortana, say *"turn off Bluetooth"*, *"disable Bluetooth"*, *"stop Bluetooth"* or *"deactivate Bluetooth"*. Cortana will notify you that Bluetooth is turned off.



Bluetooth is off

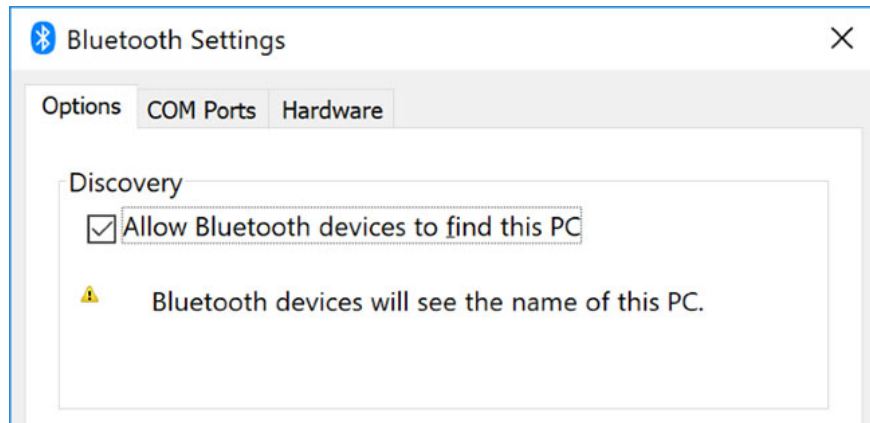
Once Bluetooth is turned on on Windows 10, you can connect to supported devices. Refer to: [How to connect Windows 10 Bluetooth](#) for details on how to do it.

## What to do if Bluetooth doesn't work on Windows 10?

Previously, [TipsMake.com](#) introduced readers on how to fix lost Bluetooth errors on Windows 10 Settings and how to fix Bluetooth errors not found in Device Manager. If this is the case, you can refer to the detailed instructions above. If not, try the following to fix the problem.

### Make the system discoverable

Set it up to make the PC discoverable to other Bluetooth devices. Press the Win+ key I and go to **Devices> More Bluetooth options** .



Go to Devices> More Bluetooth options

Check **Allow Bluetooth devices to find this PC** and click **OK**. This is not necessary if you want to pair something like a mouse or keyboard, but can be useful when pairing devices like phones.

## Reposition the device

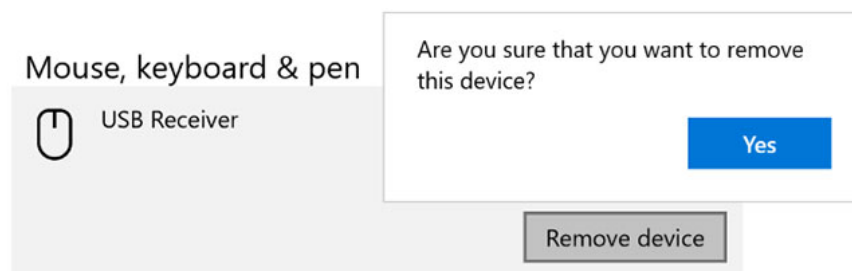
Bluetooth has limited range. Specific values vary, but in a home setting, it falls around ten meters. This number can be significantly reduced by physical barriers like walls.

Therefore, make sure the device you want to pair with the computer is turned on, fully charged and within close proximity to the Windows 10 system.

Also, make sure it's not too close to other devices that use the USB 3.0 port. These USB devices can sometimes interfere with Bluetooth connectivity.

## Disable other Bluetooth devices

Technically, you don't need to disable other Bluetooth devices, but they can cause interference when you try to pair a new device.



Disable other Bluetooth devices

To turn them off, press the Win+ key I to open **Settings** and click **Devices**. In turn, click each Bluetooth device and click **Remove device**> **Yes**.

Of course, remember to re-pair these devices if you still need them.

## Read the Event Log

In June 2019, Microsoft patched Windows 10 to protect the operating system from Bluetooth security holes. However, this causes some Bluetooth devices to experience connectivity problems.

You can see if this is affecting you. Press the Win+ key X and click **Event Viewer**. On **Summary of Administrative Events**, expand **Error** and look for the following:

1. **Event ID** : 22
2. **Event Source** : BTHUSB or BTHMINI
3. **Name** : BTHPORT\_DEBUG\_LINK\_KEY\_NOT\_ALLOWED
4. **Event Message Text** : The Bluetooth device tried to establish a debug connection. The Windows Bluetooth stack does not allow debugging connections if not in Debug mode.

If you see this, Microsoft recommends that you contact the manufacturer of the Bluetooth device to see if they can fix the problem. If not, you may need to purchase a brand new Bluetooth device.

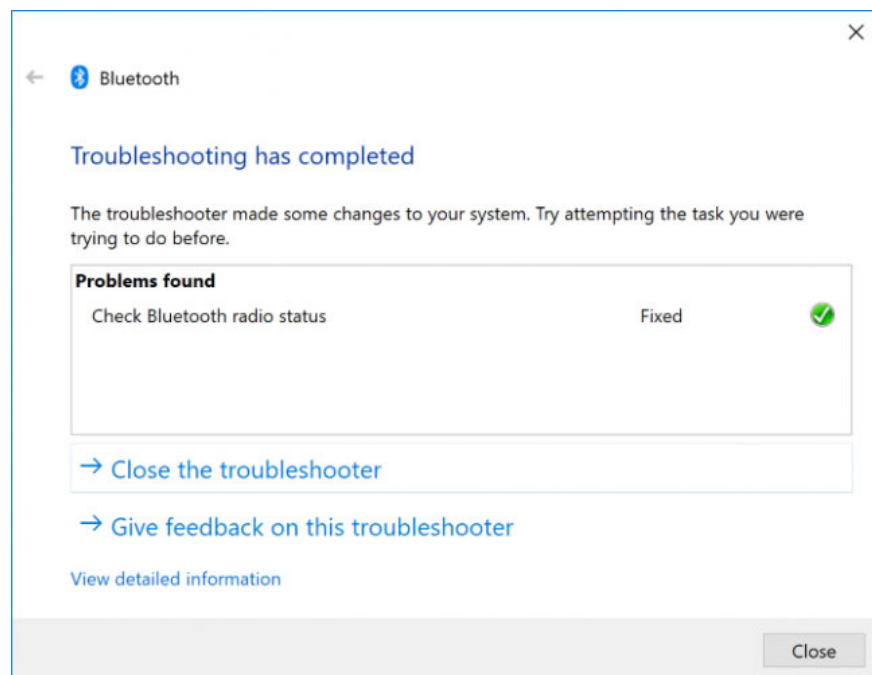
## Check for Windows Update

It's best to keep Windows up to date to benefit from the latest features and security patches. This can help solve problems with Bluetooth.

Windows 10 will automatically update, but you can manually check for and install updates. Reference: How to keep your Windows computer up to date for more details.

## Run Bluetooth Troubleshooter

Windows 10 has an integrated Bluetooth troubleshooter. This tool will detect any problems and automatically try to fix them.



Run Bluetooth Troubleshooter

To run it, press the Win+ key I to open **Settings** and go to **Update & Security > Troubleshoot > Bluetooth > Run the troubleshooter** . Follow the instructions.

The tool will fix any problems it finds, but some of them may require manual action on your part.

You finished reading the article "**How to turn on Bluetooth on Win 10**" edited by the [TipsMake](#) team. We hope this article has provided you with many useful tech tips and tricks. You can search for similar articles on tips and guides. Thank you for reading and for following us regularly.