

How to turn on and off function keys FN + F1, F2, F3, ... F12 on Laptop

Laptop shortcuts are the use of function keys FN + F1, F2, F3, ... F12 on Laptops. Depending on each function key, it has its own task. Please refer to how to turn on and off function keys FN + F1, F2, F3, ... F12 on Laptop for effective use.

Fn key stands for Function which is understood as function key when combined with **F1, F2, F3** . Numlock key to activate Wifi, increase or decrease volume, screen brightness.

How to turn on and off function keys FN + F1, F2, F3,. F12 on Laptop

Depending on each model, their combination performs different functions. The picture below summarizes the functions when using Fn + . for your reference.

CÁC PHÍM TƯƠNG ỨNG KHI KẾT HỢP VỚI Fn taimienphi.vn - betdownload.com							
BẬT / TẮT	HÀNG MÁY						
	ACER	ASUS	DELL	HP	LENLOVO	SONY	TOSHIBA
Wifi	F3	F2	F2	F12	F7		F12
Chế độ Sleep	F4	F1					
Bật / Tắt Touchpad	F7	F9	F3		F6	F1	F5
N xuất hình ra màn hình ngoài	F5	F8	F1	F4	F10	F7	F4
Bật tắt màn hình	F6	F7			F9		
Tắt âm thanh	F8	F10	Phím bên phải F12	F11	F1	F2	F11
Tăng / giảm độ sáng	Phải / Trái	F6 / F5	F5 / F4	F3 / F2	F12 / F11	F6 / F5	F3 / F2
Tăng / giảm âm lượng	Lên / Xuống	F12 / F11	F12 / F11	F10 / F9	F3 / F2	F4 / F3	F10 / F9
Play / Pause	Home	Mũi tên Xuống	F9	F7			F7
Stop	Pg Up	Mũi tên Lên					
Previous	Pg Dn	Mũi tên Trái	F8	F6			F6
Next	End	Mũi tên Phải	F10	F8			F8
Mô hình duyệt				F5			
Help				F1			F1
Refresh Desktop					F5		
Hiện tất cả ứng dụng đang chạy					F8		
Đóng cửa sổ đang làm việc					F4		

Through the picture above, we can see many functions that this device brand has that other device brands do not. You can read more about **the functions of the F1 to F12 keys** to know more about their functions and you can also **change the functions between the keys**. . Hope you are succesful !

Some customizations use the FN key

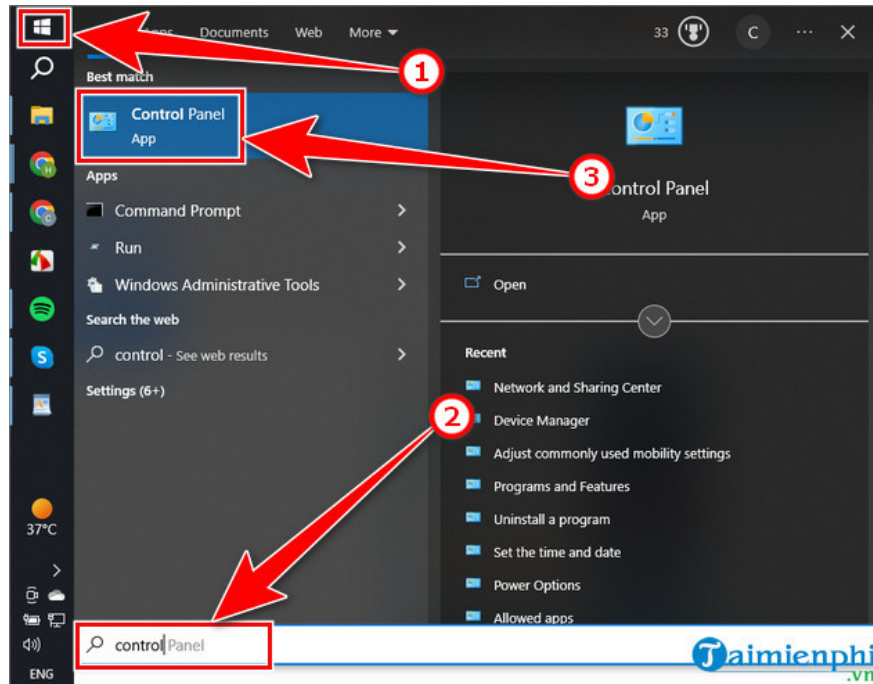
The Fn key is often combined with the key sequence from F1 to F12 to turn on/off other functions according to the system's default settings. You can use the Fn key and press the F1 button to mute or F2 to decrease the volume, etc. And you can also turn off the FN key on the laptop to use the keyboard better.

Download Easy DriverPack

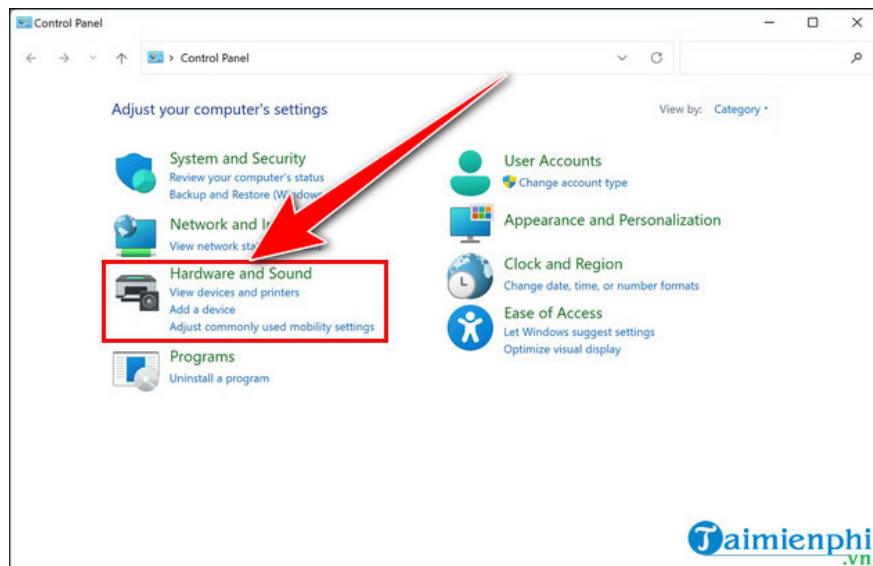
1. Enable/Disable Fn Function Key on Dell Laptop

The simplest way to change the function keys is to edit the settings in Windows Mobility Center. However, this method will only work for those using Dell laptops. To do this, you can follow these steps:

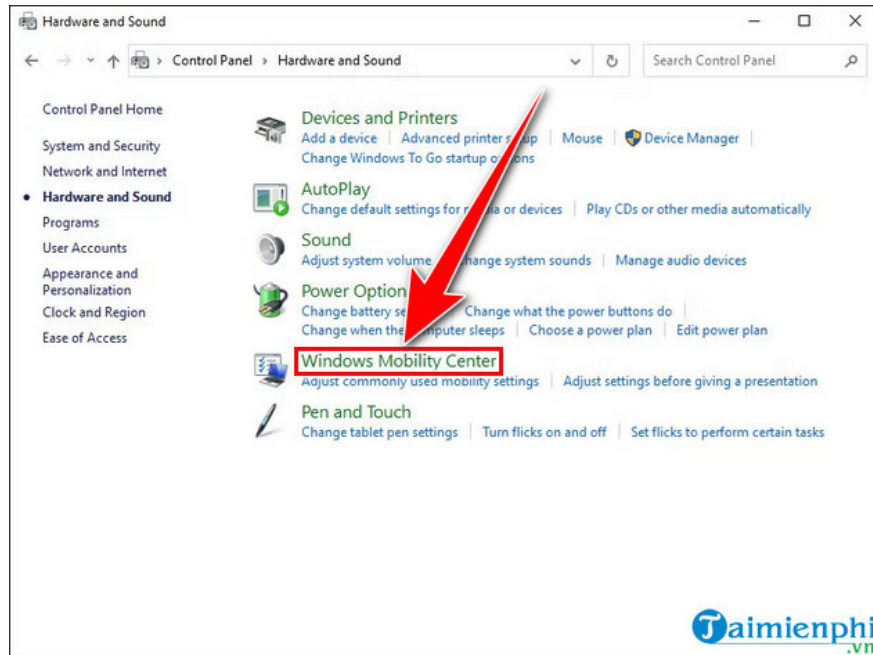
Step 1 : Click **Start** and enter **Control Panel** to open to view and change system settings.



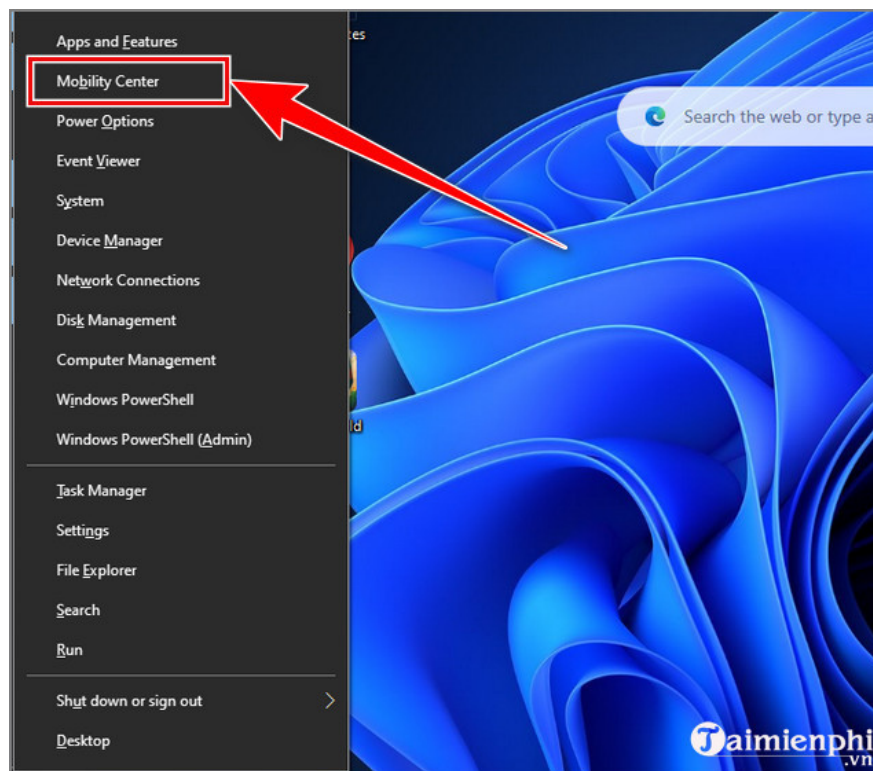
Step 2 : In the Control Panel menu, click **Hardware and Sound**.



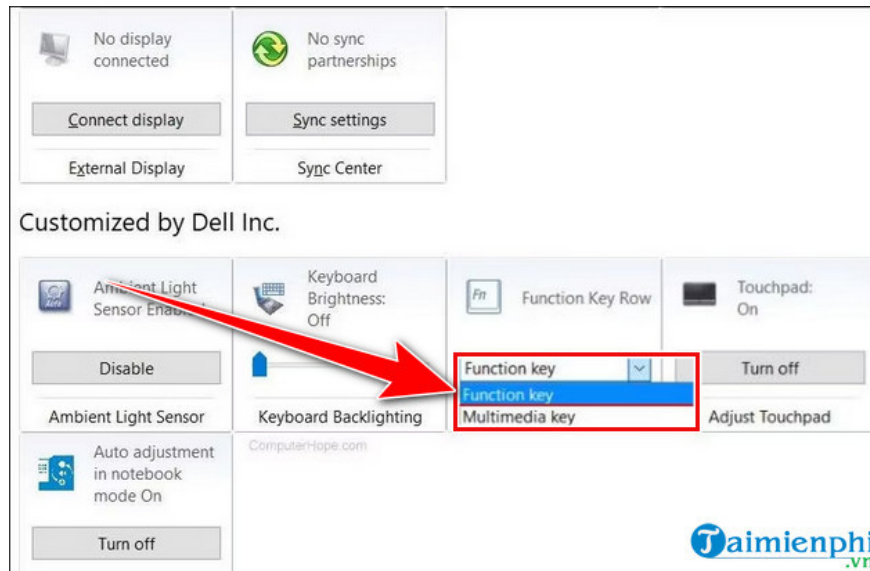
Step 3: Click the **Windows Mobility Center** tab.



Step 4: Or you can press the **Windows + X** key combination and select **Mobility Center** on the pop-up menu to open **Windows Mobility Center**.



Step 5: In Windows Mobility Center, you can choose to **enable/disable** by switching between **Function Key** or **Multimedia key** in the **Function Key Row** section.



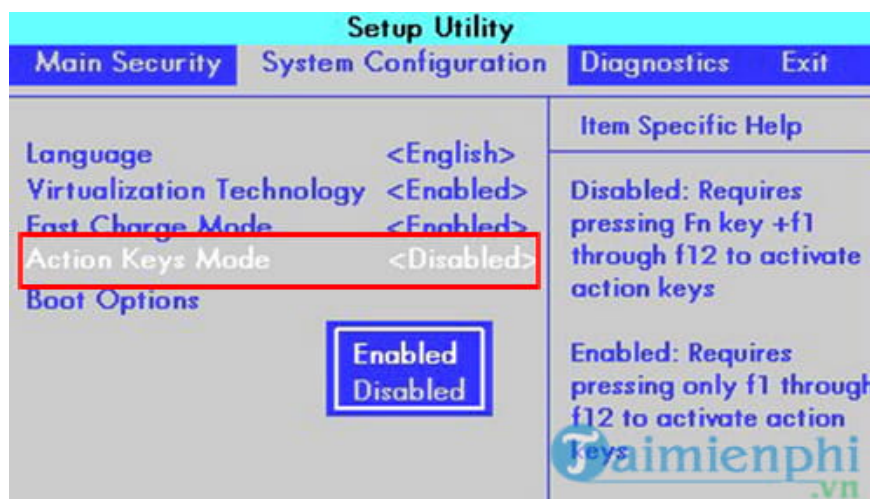
In there:

- **Function key** : is the default feature that we often use, meaning we have to press the function key Fn + with a key from F1 => F12 to use it.
- **Multimedia key** : If you choose this feature, you will no longer need to press the Fn key in combination with the keys from F1 => F12. For example, when you press F2, the system will immediately decrease the sound, or when you press F3, it will increase the sound, etc.

Note : In case you cannot find the Windows Mobility Center section, it is likely that you have not fully installed the driver for the device. Therefore, you need to visit Dell's driver installation support home page, download and install the Dell Quickset application package.

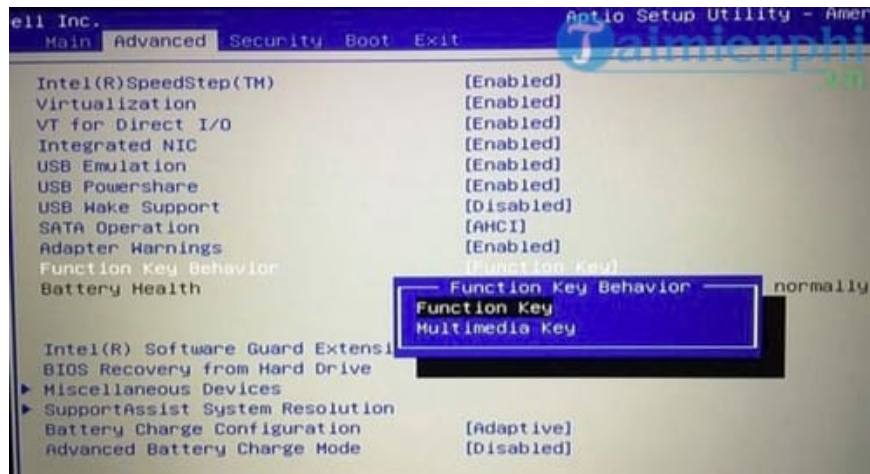
2. Turn on/off the Fn function key on HP Laptop

To enable/disable the Fn function on HP Laptops, first you need to reset the computer and while booting, press **F10** to enter BIOS settings > select **System Configuration** tab > **Action Keys Mode** [**Enable**] or [**Disabled**].



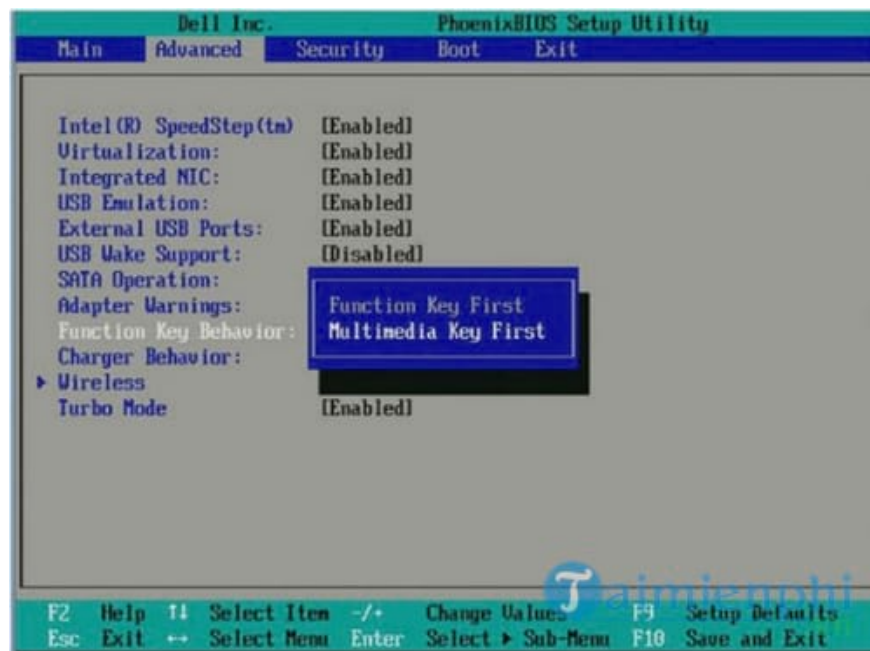
3. Turn on/off the Fn function key on Lenovo Laptop

Similar to an HP laptop, you restart the computer and press the **F1** key (some machines do **F2**) to enter the BIOS settings then do as shown below.

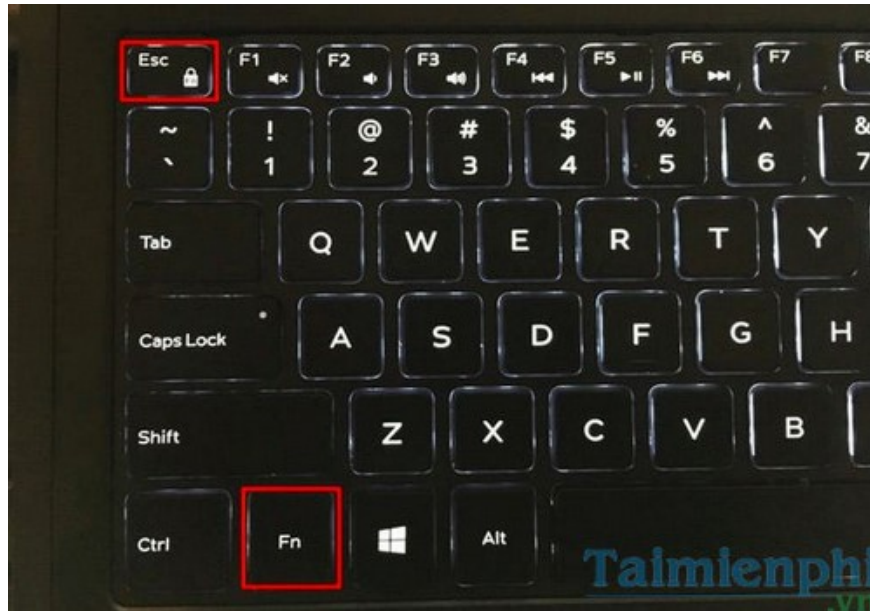


4. Turn on/off the Fn function key on some other laptops

Boot into BIOS, go to the **Advanced** tab and find the **Function Keys** section . to turn on or off the Function function key.



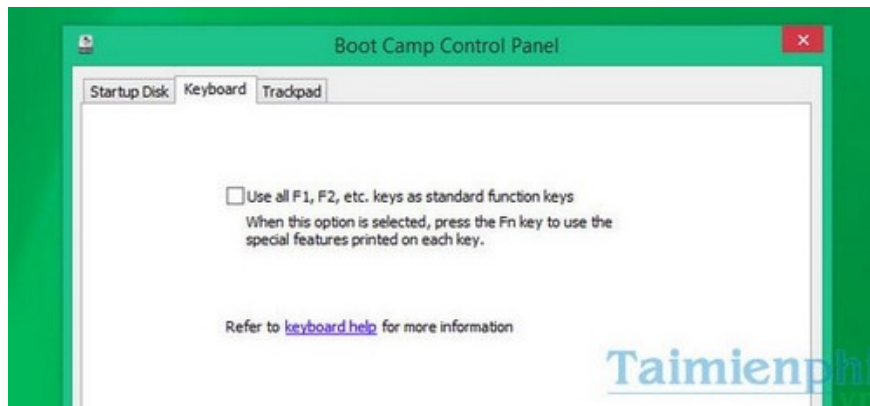
In addition, readers can also quickly turn on and off the FN function key on the laptop via the FN + Esc key combination. Fn Lock has the same function as Caps Lock, when you turn on Fn Lock you don't need to use the Fn key anymore, you just need to press the key containing that function just like Caps Lock is turned on, it will always capitalize letters. So.



In the example above, **the Fn Lock key** is **the Esc key** . To activate **Fn Lock** , press the Fn + ESC key at the same time and to turn off Fn Lock, do the same.

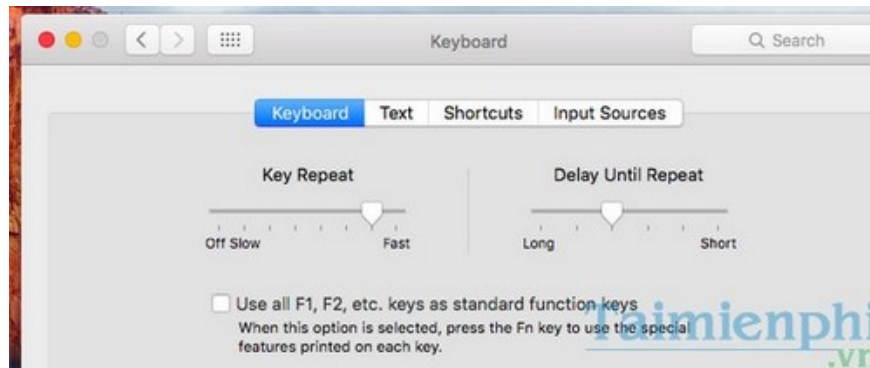
5. Change options on Control Panel.

If you use **Windows** via **Boot Camp** on your Mac, you can open **the Boot Camp Configuration Panel** on the System Tray and look for the option '**Use all F1,F2, etc. keys as standard function keys**' under the Keyboard tab



6. Turn on and off the FN key on Mac OS X

On **Mac OS X** , you can look for this option on **System Preferences** . Click on **the Apple Menu** and select '**System Preferences**' to open. Then click on the **"Keyboard"** icon (keyboard icon) and click on the option '**Use all F1, F2, etc. keys as standard function keys**' to customize how the Fn key is used on your Mac



7. Change Fn function key settings using UEFI settings

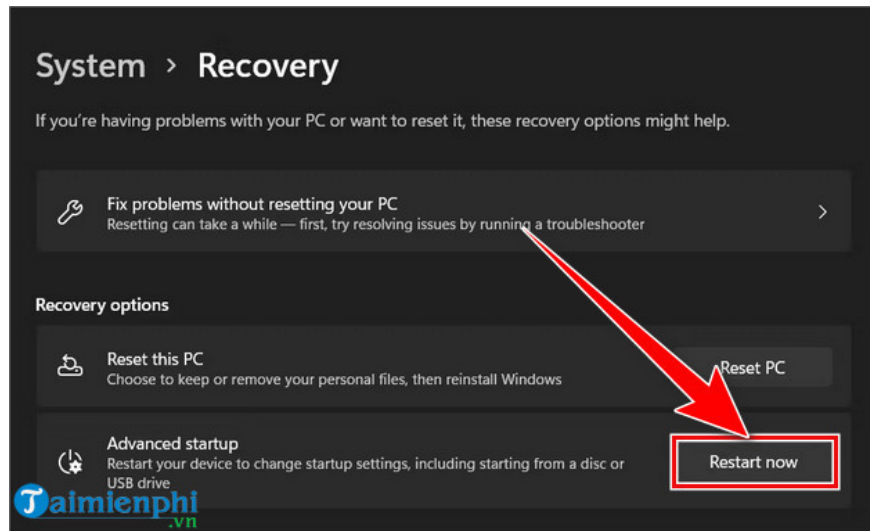
If you can't boot into BIOS for some reason, try changing the Fn keys function using UEFI settings. To do this, you can follow these steps:

Step 1: Start UEFI settings.

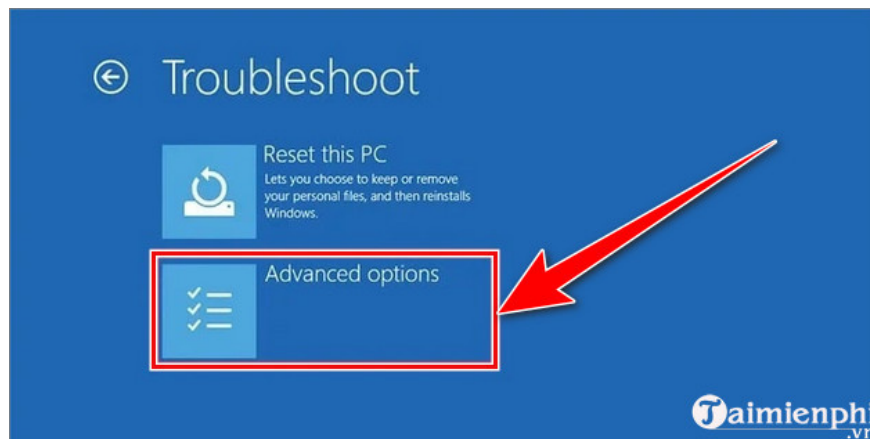
- On Windows 10: Press the Win + I key combination and select Update & Security => Recovery. Then, click Restart now to open UEFI settings.



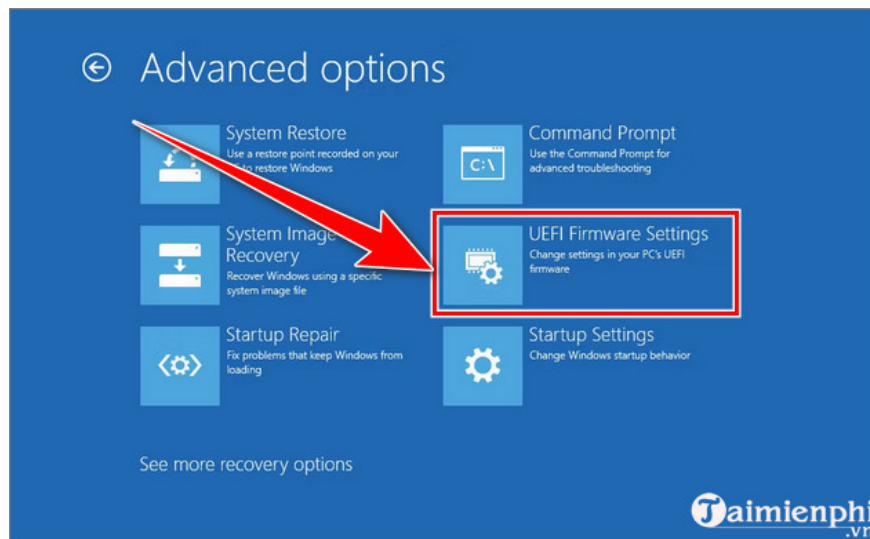
- On Windows 11: Press the Win + S key combination to open the Windows Search utility, enter Recovery and click the Recovery option, then select Restart now in the Advanced startup section.



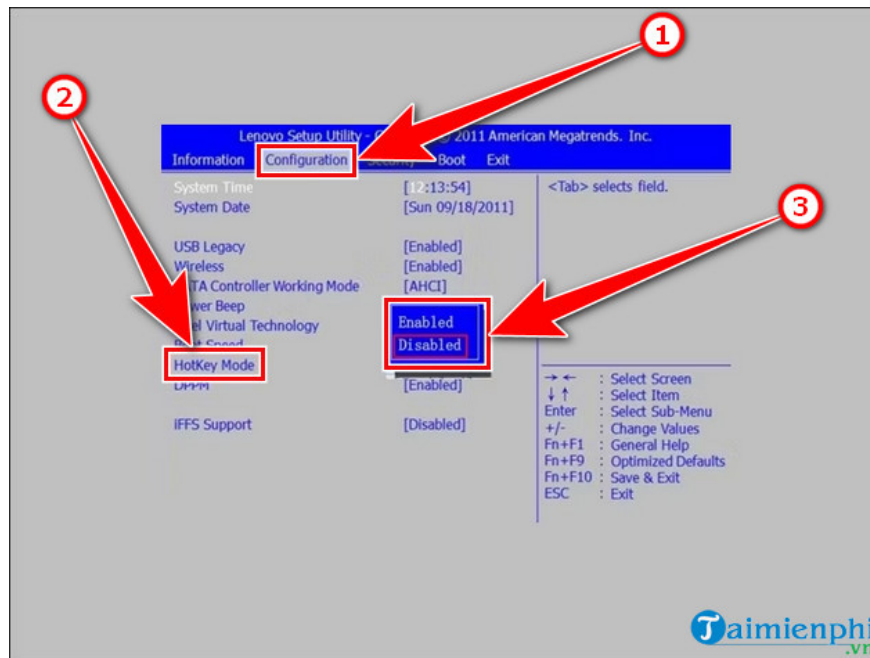
Step 2 : Once you have started the **Windows Recovery Environment** , click **T roubleshoot => Advanced options**



Step 3: Select **UEFI Firmware Settings => Restart.**



Step 4 : After the computer restarts, you will access **the UEFI settings** , select the **Configuration** tab . In the **HotKey Mode** section , you can choose **Enabled or Disabled** to enable or disable the **Fn function key**.



Additionally, you can use Windows Mobility Center on Windows 7/8 to set up settings and use the Fn key. Furthermore, you can refer to the article Summary of keyboard shortcuts on Windows 8 which is also very useful to help you save a lot of time while using the computer.

You finished reading the article "**How to turn on and off function keys FN + F1, F2, F3, ... F12 on Laptop**" edited by the [TipsMake](#) team. We hope this article has provided you with many useful tech tips and tricks. You can search for similar articles on tips and guides. Thank you for reading and for following us regularly.