

How to turn on AHCI in Windows 8 and Windows 10 after installation

If you want to install Windows using AHCI instead of the IDE, you usually need to turn on AHCI in the BIOS / UEFI first. This guide will show you how to turn on AHCI in Windows 8 / 8.1 and Windows 10 after you have installed the operating system with the IDE by mistake.

Usually today motherboards will have AHCI enabled in UEFI or BIOS by default. If you want to install Windows using AHCI instead of the IDE, you usually need to turn on AHCI in the BIOS / UEFI first.

This guide will show you how to turn on AHCI in Windows 8 / 8.1 and Windows 10 after you have installed the operating system with the IDE by mistake.

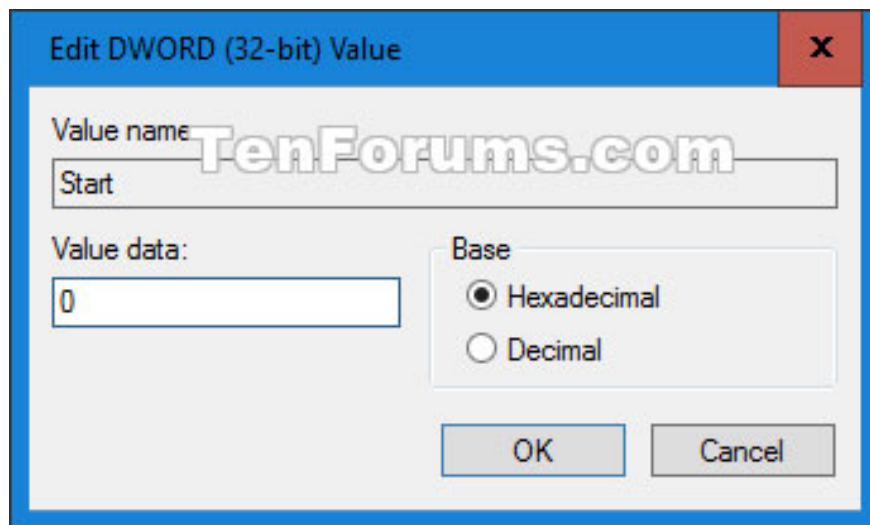
Some note before implementation

1. You must be logged in as an administrator to activate AHCI after installing Windows.
2. You should create a restore point before following this tutorial. Thus, if you make a mistake, you can easily undo it by performing a system restore using the restore point you created.

How to turn on AHCI in Windows 8 and Windows 10 after installation

Here's how:

1. While in Windows, press the Win+ keys R to open **Run** , type **regedit** into **Run**, and click **OK** to open Registry Editor.
2. If prompted by UAC, click **Yes**.
3. On the left side of Registry Editor, browse to the key location below.
`HKEY_LOCAL_MACHINESYSTEMCurrentControlSetServicesiaStorV`
4. On the right of the **iaStorV** key , double-click **DWORD Start** to modify it.
5. Enter **0** for **AHCI** and click **OK**.



Enter 0 for AHCI and click OK

6. On the left side of Registry Editor, browse to the key location below.

HKEY_LOCAL_MACHINESYSTEMCurrentControlSetServicesiaStorAVCStartOverride

7. To the right of the **StartOverride** key , double click DWORD **0** to modify it.

8. Enter **0** and click **OK**.

This value will return **3** after you restart the computer.

9. On the left side of Registry Editor, browse to the key location below.

HKEY_LOCAL_MACHINESYSTEMCurrentControlSetServicesstorahci

10. On the right of key **storahci** , double click DWORD **Start** to modify it.

11. Enter **0** for **AHCI** and click **OK**.

12. On the left side of Registry Editor, browse to the key location below to see if you have **StartOverride** here. If you don't, then go to step 15 below.

HKEY_LOCAL_MACHINESYSTEMCurrentControlSetServicesstorahciStartOverride

13. If this key exists, to the right of the **StartOverride** key , double-click DWORD **0** to modify it.

14. Enter **0** and click **OK**.

15. When done, close the Registry Editor.

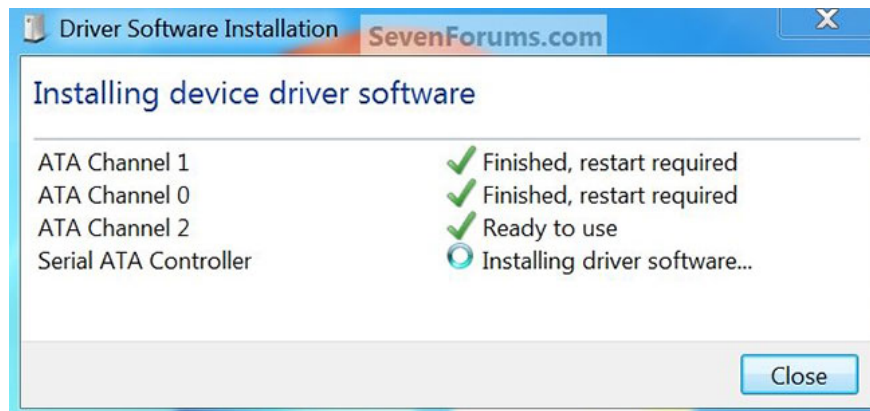
16. Boot the computer to install the BIOS or UEFI firmware.

17. In BIOS or UEFI firmware settings, enable AHCI, save and exit to apply and restart the computer.

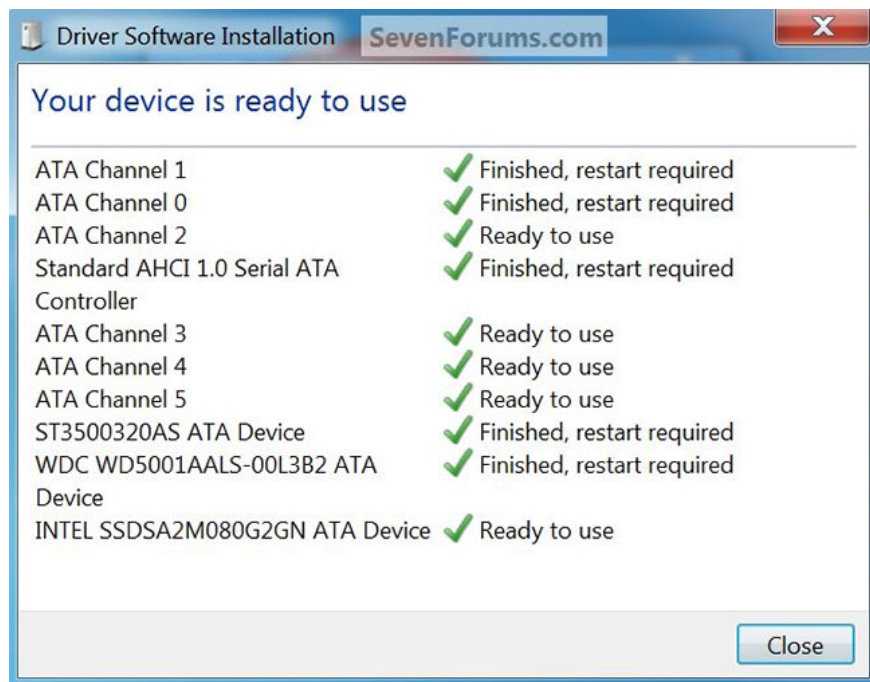
Note: These settings will vary by brand and motherboard model number. Please read the motherboard manual for more specific details on how to change the SATA settings for it.



In BIOS or UEFI firmware installation, enable AHCI
18. When Windows starts, it automatically installs the AHCI driver.

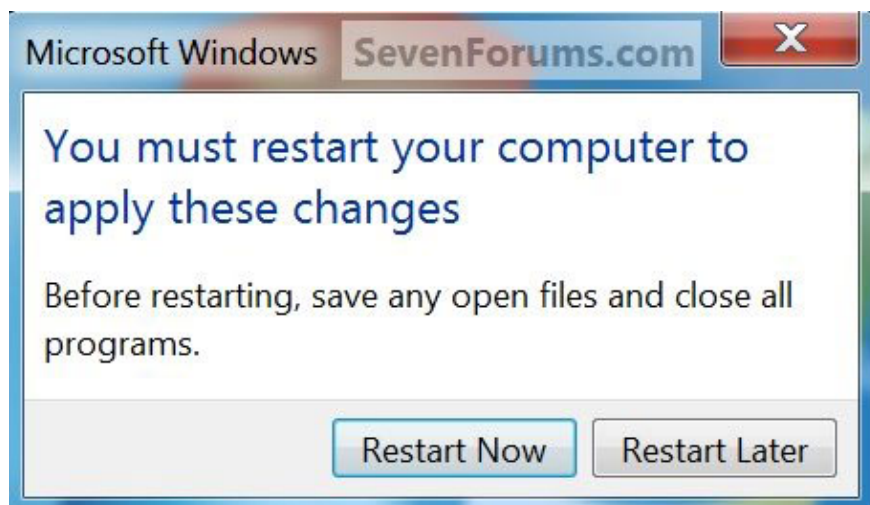


Drivers are automatically installed



Device ready to use

19. When done, you will need to click **Restart Now** to restart the computer.



Click Restart Now to restart the computer

You finished reading the article "**How to turn on AHCI in Windows 8 and Windows 10 after installation**" edited by the [TipsMake](#) team. We hope this article has provided you with many useful tech tips and tricks. You can search for similar articles on tips and guides. Thank you for reading and for following us regularly.