

How to turn on 2 windows in Photoshop to collate images

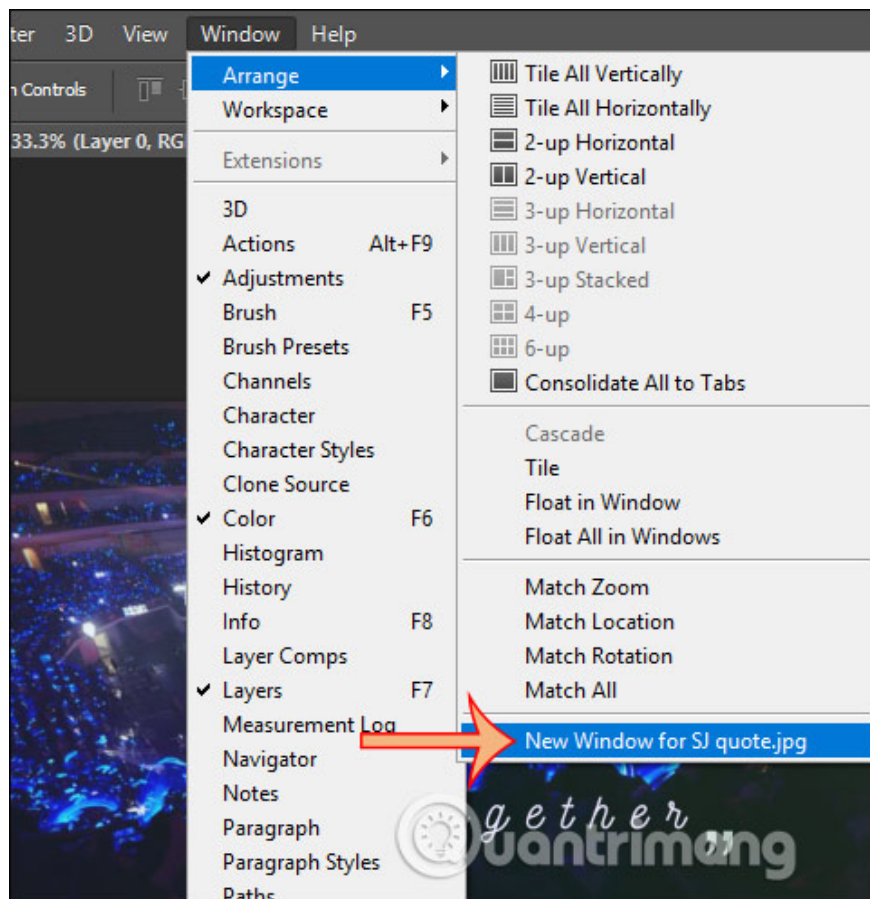
When editing photos in Photoshop, tracking editing details with the overall picture will be easier when we turn on 2 image windows.

When editing photos in Photoshop, tracking editing details with the overall picture will be easier when we turn on 2 image windows. Usually when editing photos, to edit something more detailed we will often enlarge the image to zoom into a point and then proceed to edit. However, many people are unable to balance the editing point with the surrounding layout, resulting in a picture that does not have harmony. If so, you can turn on 2 image windows at the same time to track the entire image layout, and edit the details accordingly. The following article will guide you how to turn on 2 windows in Photoshop.

Instructions to turn on 2 windows in Photoshop

Step 1:

We open the image to edit in Photoshop as usual. Then click on the Windows tab, select **Arrange** and then go to **New Window for . image name** .



Step 2:

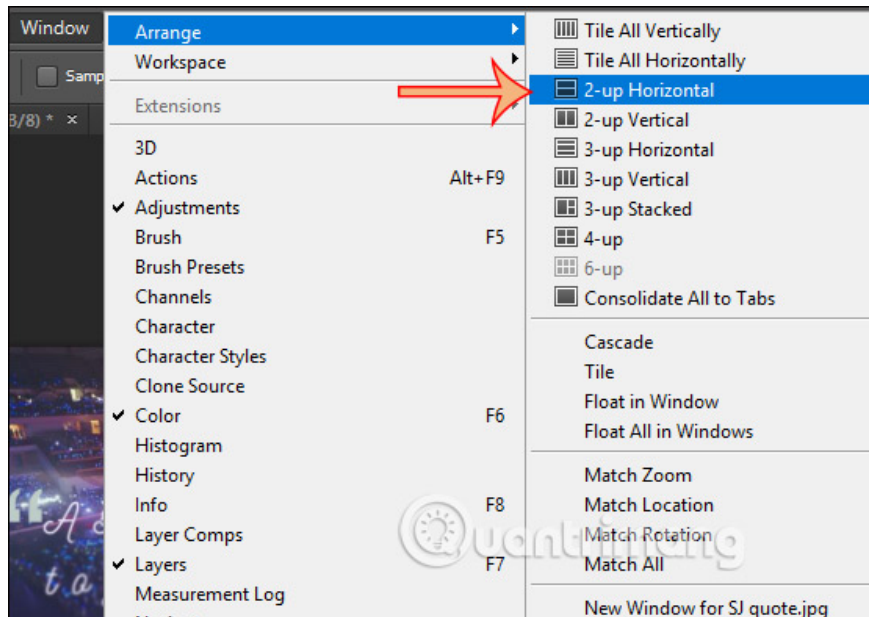
Now add a **new image window pane**, drag the window pane away from the current image interface. Immediately display 2 image windows as below. We can maximize or minimize the window as usual. Any editing changes on this new window will be applied right on the original window, or vice versa.

So you will easily compare and contrast images after editing.



Step 3:

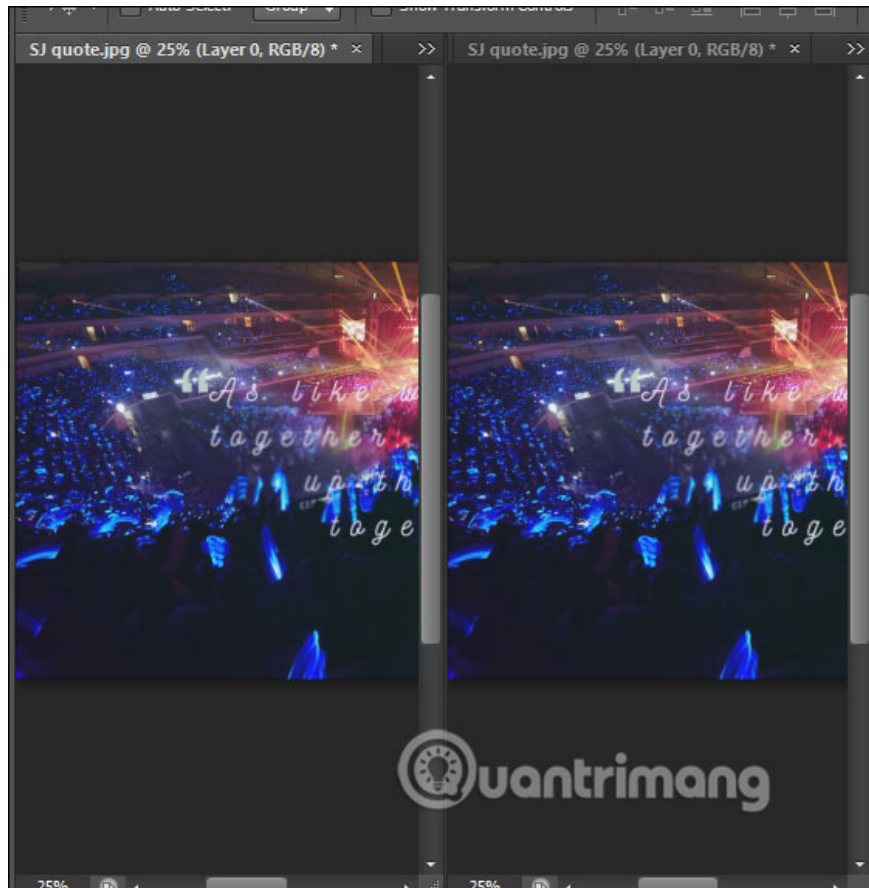
In addition to moving the new window, we can also **split the interface** if desired. Click **Window**, then **Arrange**, click **Up Horizontal** to split the interface horizontally. If your image is horizontal, then this interface split well.



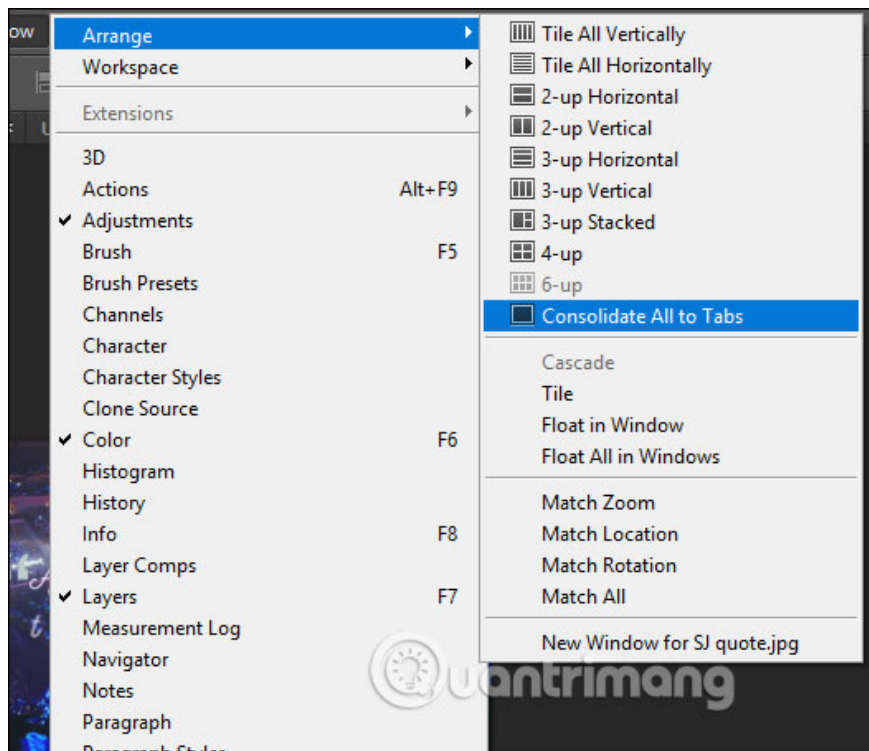
Result 2 images are separated horizontally as shown below.



To **split the interface vertically** if your image is vertical, click **Up Vertical** and the results shown as shown below.



When you're done editing, want to bring Photoshop's interface to the tabbed interface, click Consolidate All to Tabs.



You finished reading the article "**How to turn on 2 windows in Photoshop to collate images**" edited by the [TipsMake](#) team. We hope this article has provided you with many useful tech tips and tricks. You can search for similar articles on tips and guides. Thank you for reading and for following us regularly.
