

How to turn off Windows Installer to block MSI package

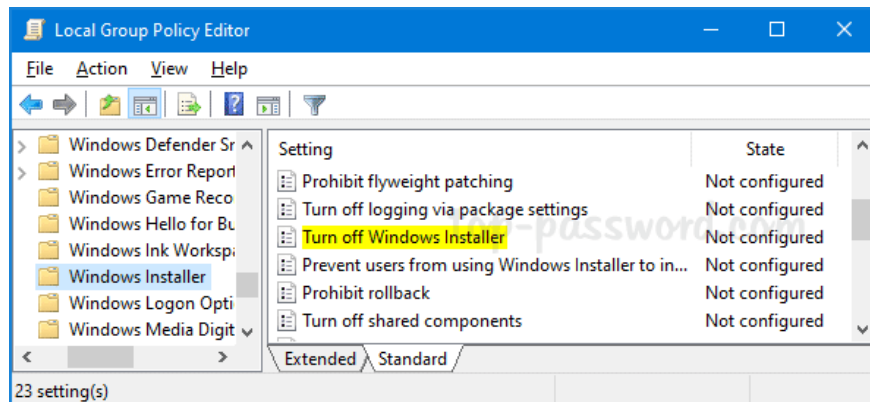
Windows Installer is a background service, which manages the installation and uninstallation of MSI-based programs. To block the MSI installer, you can turn off Windows Installer using Group Policy or edit the registry.

Is there a way to prevent users from installing the .msi package? Windows Installer is a background service, which manages the installation and uninstallation of MSI-based programs. To block the MSI installer, you can turn off Windows Installer using Group Policy or edit the registry.

Method 1: Disable Windows Installer with GPO

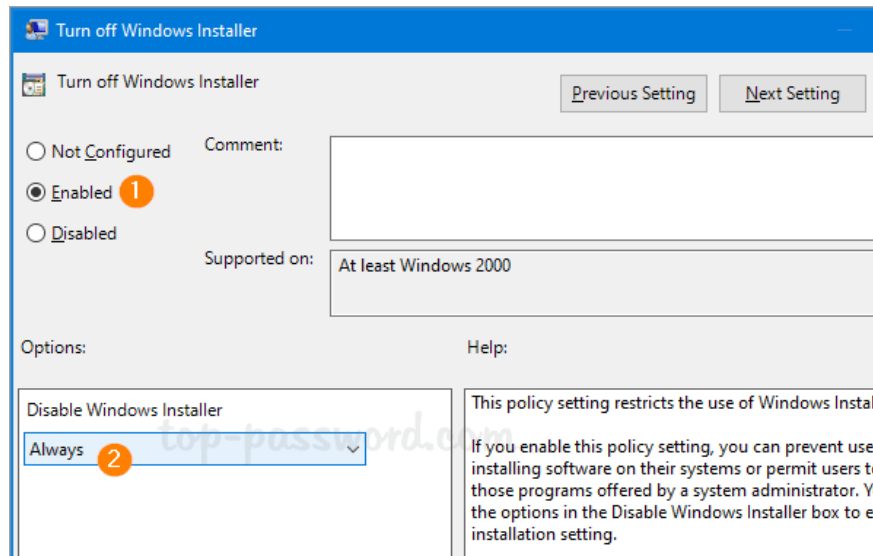
To disable Windows Installer using Group Policy, follow these steps:

1. Open Local Group Policy Editor and expand **Computer Configuration > Administrative Templates > Windows Components > Windows Installer**. Double click on the policy named **Turn off Windows Installer** in the right panel.



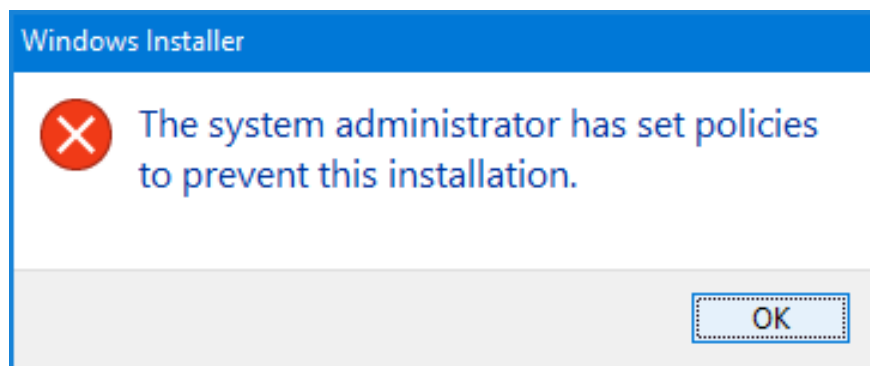
Double click on the policy called Turn off Windows Installer

2. Select **Enabled**. Click the **Disable Windows Installer** drop-down list and select **Always**.



Click the Disable Windows Installer drop-down list and select Always

3. Click **OK** and reboot the system to apply the changes. The next time you try to run any .msi package, you will receive an error message: *'The system administrator has set policies to prevent this installation'*. (System administrators have set policies to prevent this setting.)



The next time you try to run any .msi package, you will receive an error message

Method 2: Disable the Windows Installer by tweaking the Registry

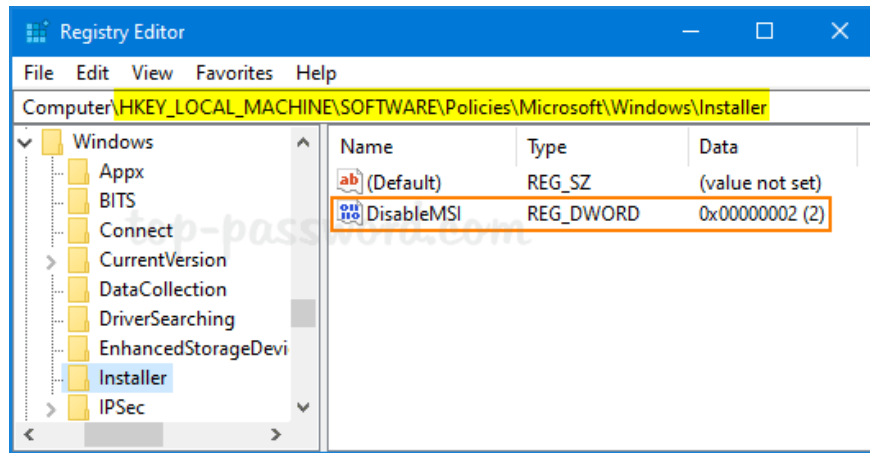
To disable the Windows Installer by tweaking the Registry, follow these steps:

1. Open Registry Editor and browse to:

HKEY_LOCAL_MACHINE\Software\Policies\Microsoft\WindowsInstaller

If the **Installer** subkey does not exist, you must create it first.

2. Double-click DWORD 32-bit **DisableMSI** on the right and set the value to **2**.



Double-click DWORD 32-bit DisableMSI on the right and set the value to 2

3. Close **Registry Editor** and restart Windows for the changes to take effect. If you need to re-enable the Windows installer, just set the value of **DisableMSI** to **0** .

You finished reading the article "**How to turn off Windows Installer to block MSI package**" edited by the [TipsMake](#) team. We hope this article has provided you with many useful tech tips and tricks. You can search for similar articles on tips and guides. Thank you for reading and for following us regularly.