

How to turn off Windows Defender on the latest Windows 10 2024

Turning off Windows Defender on Windows 10 is a trick that users should do if they want to use other security software or simply want to turn it off temporarily to perform some special tasks such as installing software. For detailed steps to disable Windows Defender, readers can refer to the following instructions.

Disabling Windows Defender Win 10 is completely simple and can be done in many different ways. Below are the 5 simplest ways that users can apply to turn off Windows Defender on Windows 10 quickly and most effectively. Please refer to it.

1. What is Windows Defender?

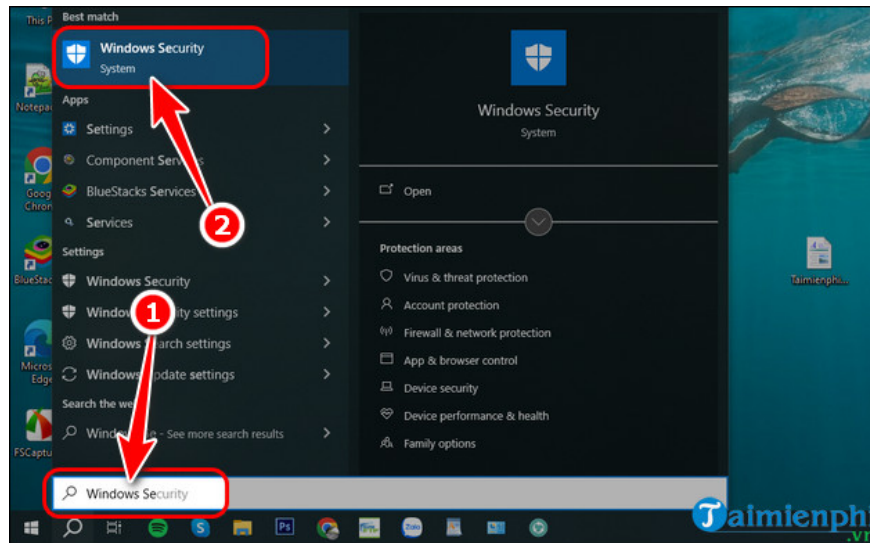
Windows Defender is security software built into the Windows 10 operating system, developed by Microsoft to protect computers from viruses, malware and other online threats. However, according to user reviews, the security features of this service are very limited and it is difficult to compete with famous PC security solution providers such as Kaspersky or Norton Antivirus. Therefore, if you have really found yourself a powerful security solution that meets your needs, turning off Windows Defender is necessary.

2. Instructions to turn off Windows Defender on Windows 10

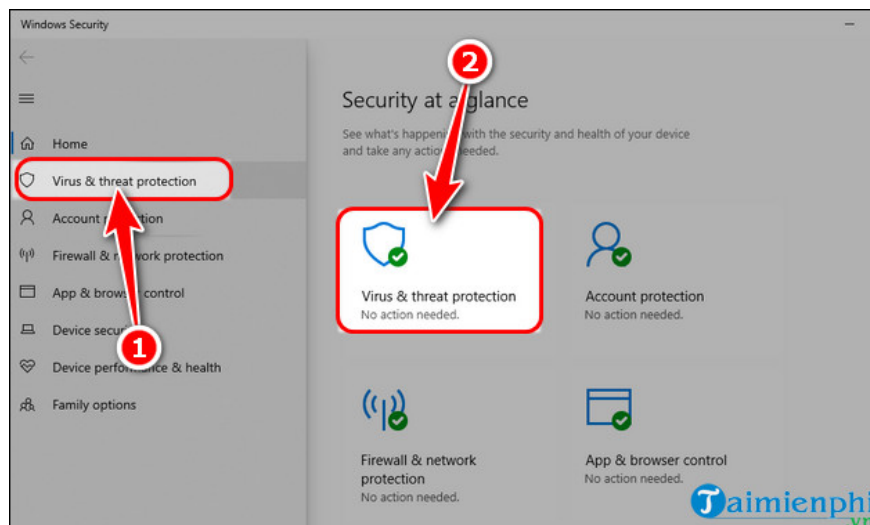
Method 1: Turn off Windows Defender Win 10 using Windows Security

Turning off Windows Defender on Windows 10 through Windows Security settings is one of the simplest ways. This way, users can temporarily disable Windows Defender on Win 10 without uninstalling or worrying about encountering other problems.

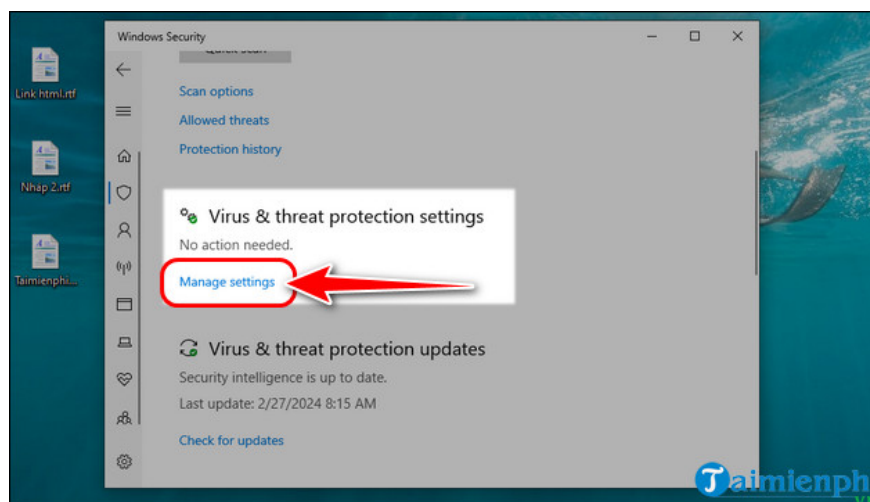
Step 1: Press the key combination **Win + S** to open the **Search** dialog box => Enter the keyword "**Windows Security**" => Select **Windows Security**.



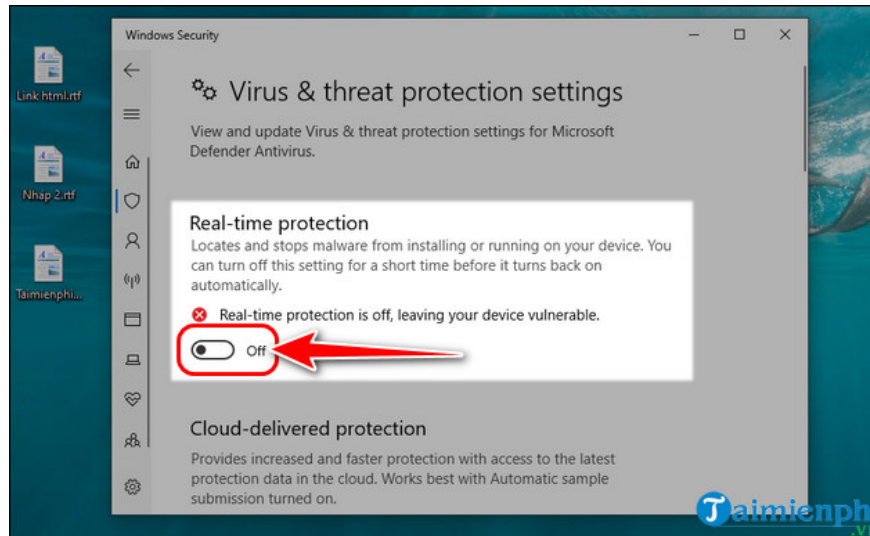
Step 2: Go to **Virus & threat protection** => Select **Virus & threat protection**.



Step 3: In the **Virus & threat protections settings** section , select **Manage settings**.



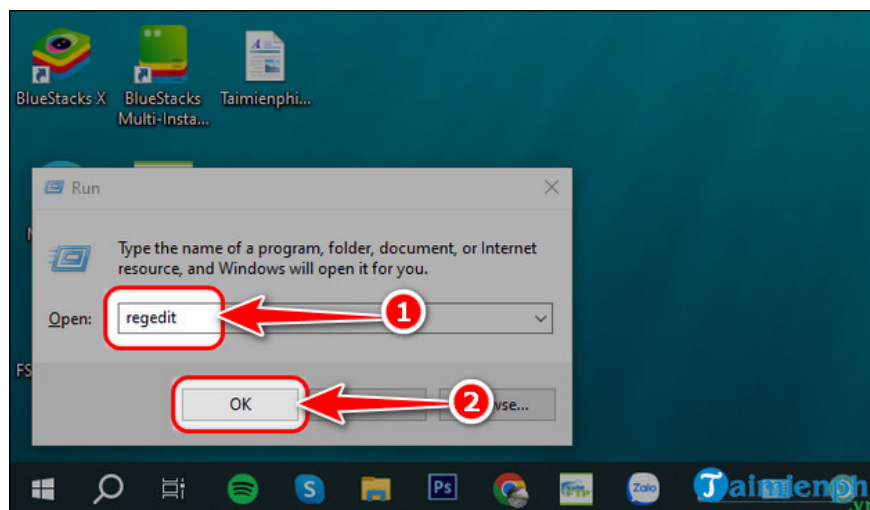
Step 4: Switch the **Real-time protection** option status to **OFF** as shown below



Method 2: Disable Windows Defender using Registry Editor

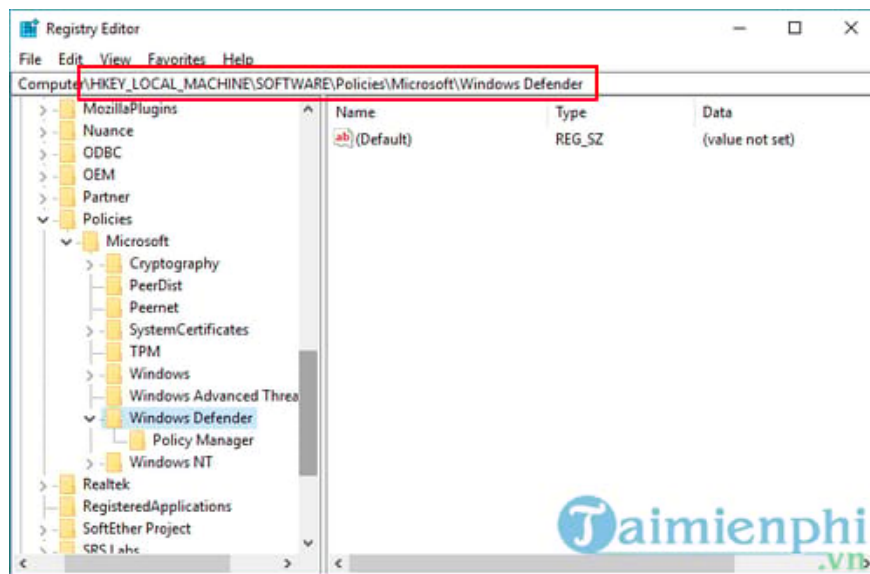
Using Registry Editor to turn off Windows Defender Windows 10 helps users to intervene deeply into the system and adjust security settings flexibly to suit specific needs and desires. However, this method requires caution and an understanding of how the system works, as changing incorrect settings can lead to security or performance problems with the computer. Therefore, this procedure is recommended for people who are tech-savvy.

Step 1: Press the key combination **Win + R** to open the **Run** dialog box => Enter the **Regedit** command => Click **OK**

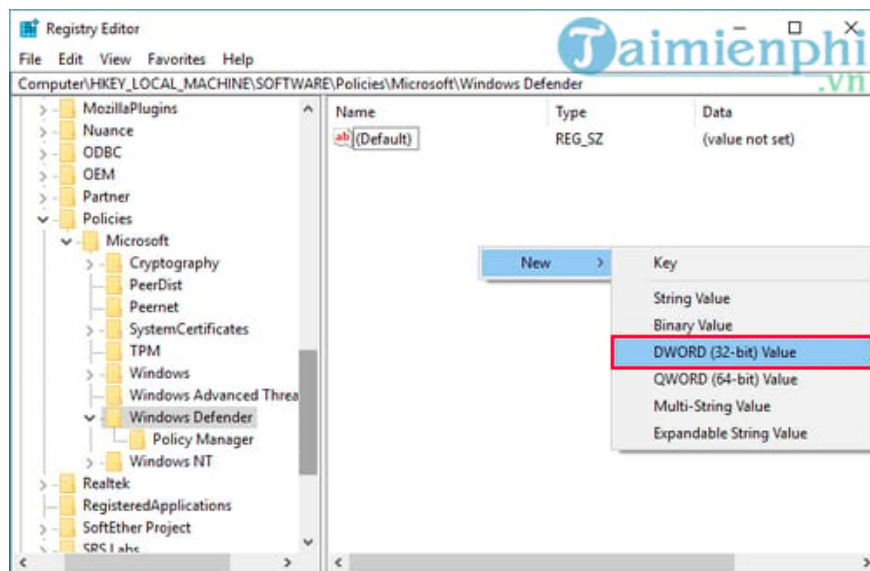


Step 2: The **Registry Editor** window will appear, enter **the path** below in the empty box => Press **Enter** on the keyboard.

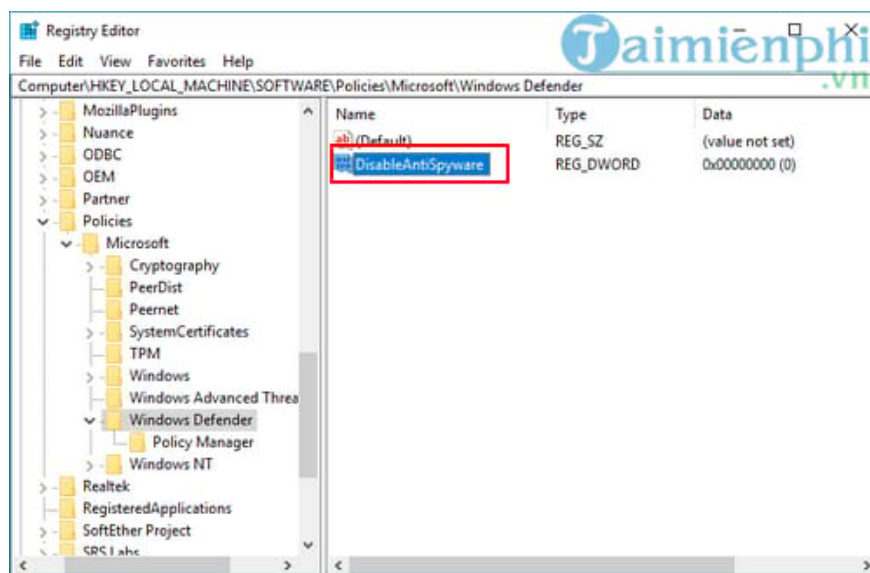
- Path: **HKEY_LOCAL_MACHINE\SOFTWARE\Policies\Microsoft\Windows Defender.**



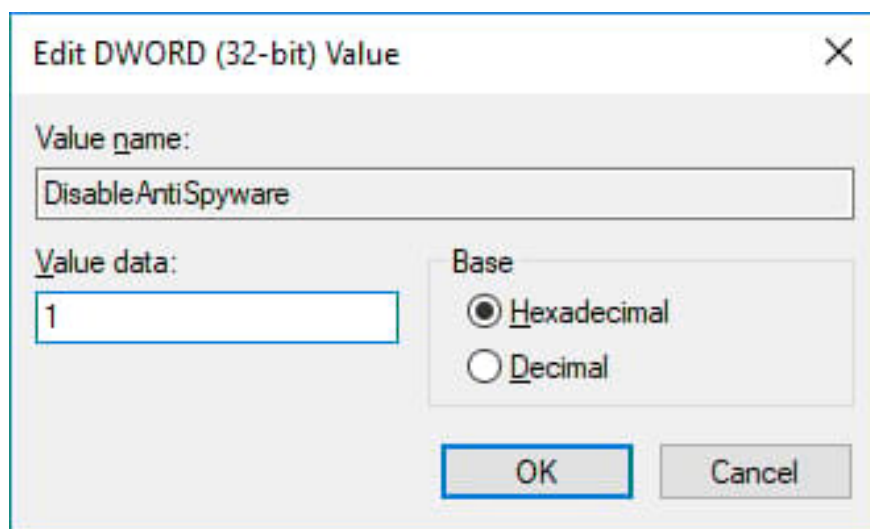
Step 3: Right-click on an empty space => Select **New** => Select **DWORD (32-bit) Value** .



Step 4: Name this new key **DisableAntiSpyware** .



Step 5: Double click on the **DisableAntiSpyware** key you just created => Change the Value Data value from **0** to **1** => Click **OK**.



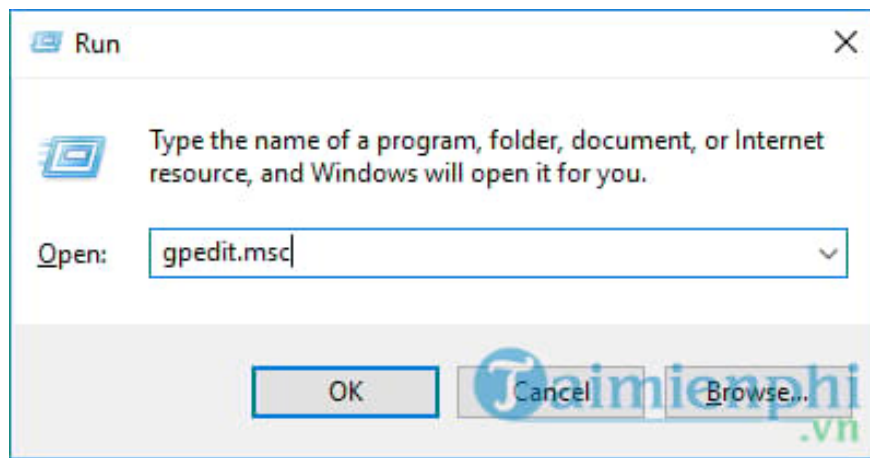
Step 6: Restart your computer to complete the process.

If you want to reactivate Windows Defender, repeat the above steps and change the value in the Value Data frame from 1 to 0, restart your computer to apply the changes.

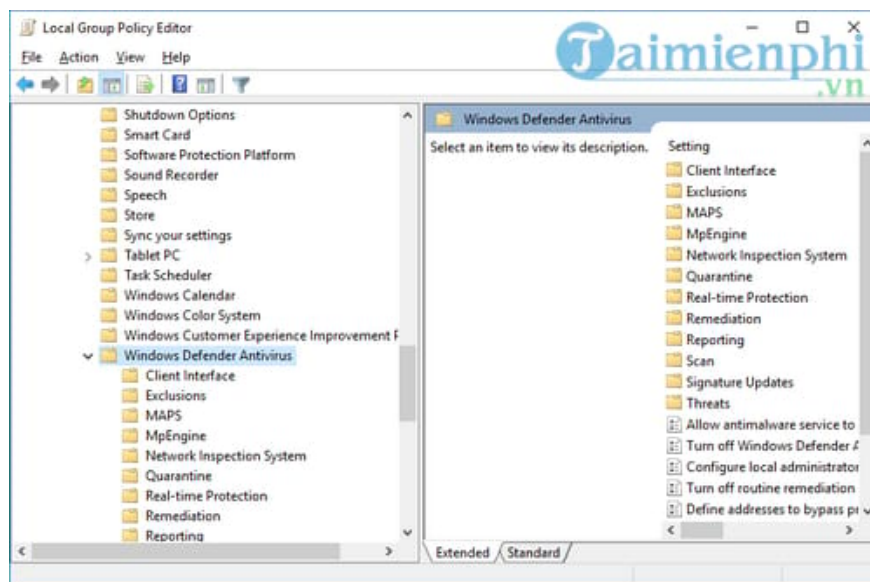
Method 3: Turn off Windows Defender on Windows 10 using Local Group Policy

Customizing Local Group Policy Editor is a quite effective way to turn off Windows Defender on Windows 10. However, this function is currently only supported on Windows 10 operating systems Pro, Enterprise, Education versions. Computers running Windows 10 Home or Single language, please refer to how to use the Registry or Settings above to disable Windows Defender.

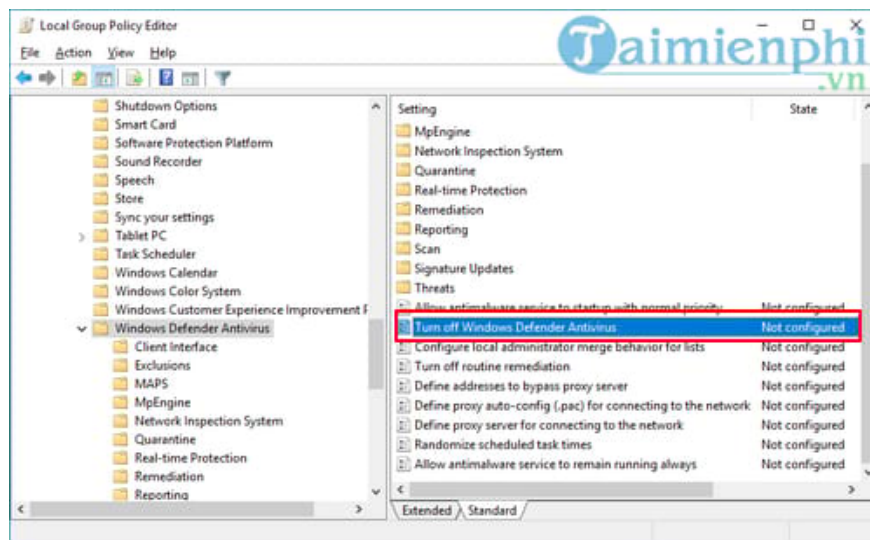
Step 1: Press the key combination **Win** + **R** to open the Run dialog box => Enter the command **gpedit.msc** => Click **OK**



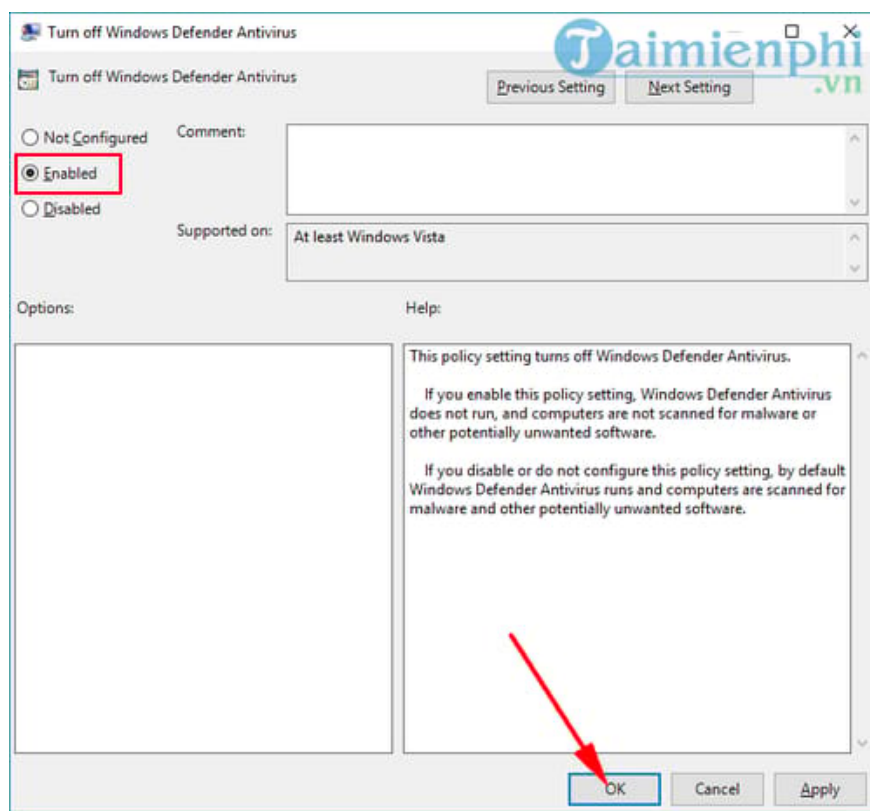
Step 2: The Group Policy window appears, access the following path: **Local Computer Policy >> Computer Configuration >> Administrative Templates >> Windows Components >> Windows Defender Antivirus.**



Step 3: Find and double-click **Turn off Windows Defender Antivirus** in the right pane

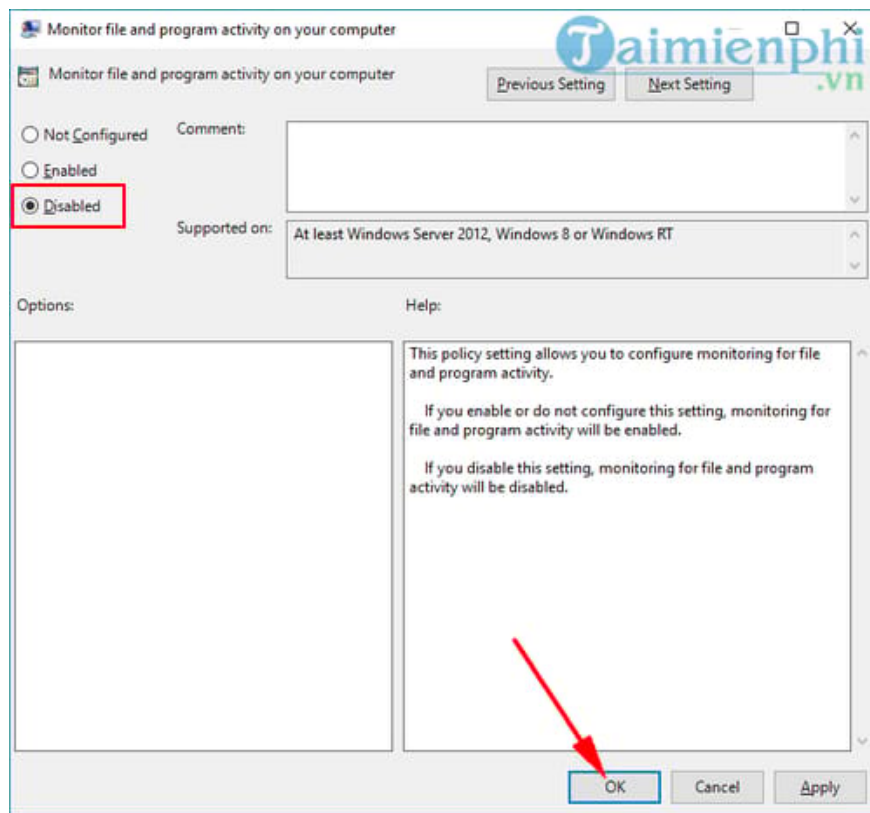


Step 4: Select **Enable** => Click **OK** to save

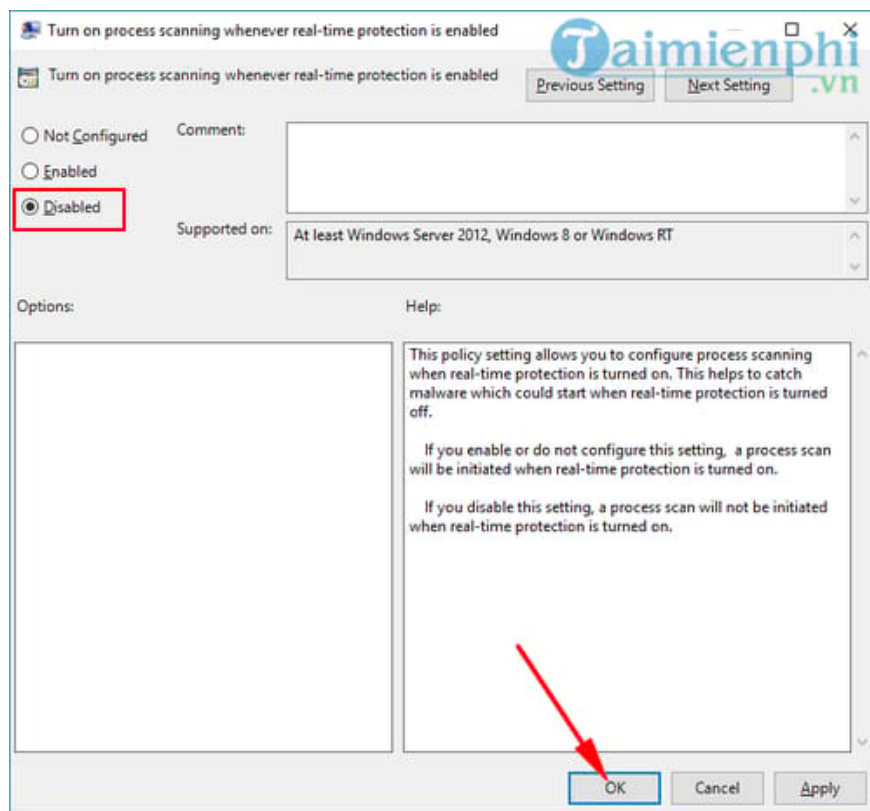


Step 5: At **Real-time Protection** , make the following settings:

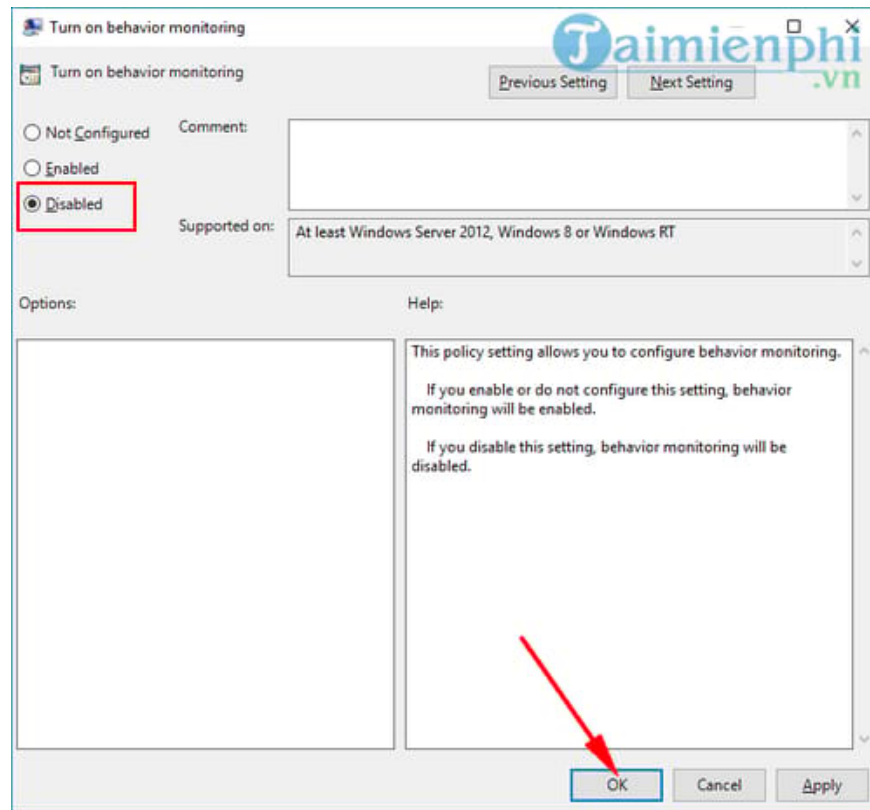
- Double click **Monitor file and program activity on your computer**.
- Select **Disable** => Click **OK** to save



- Double click **Turn on process scanning whenever real-time protection is enabled** => Click **Disable** => Click **OK**.



Step 6: Double click on **Turn on behavior monitoring** => Select **Disable** => Click **OK**. *Step 7:* Restart the computer to apply the changes. - In case you want to turn Windows Defender back on, just do the opposite of the options in each step above.



Method 4: Use Defender Control to turn off Windows Defender on Windows 10

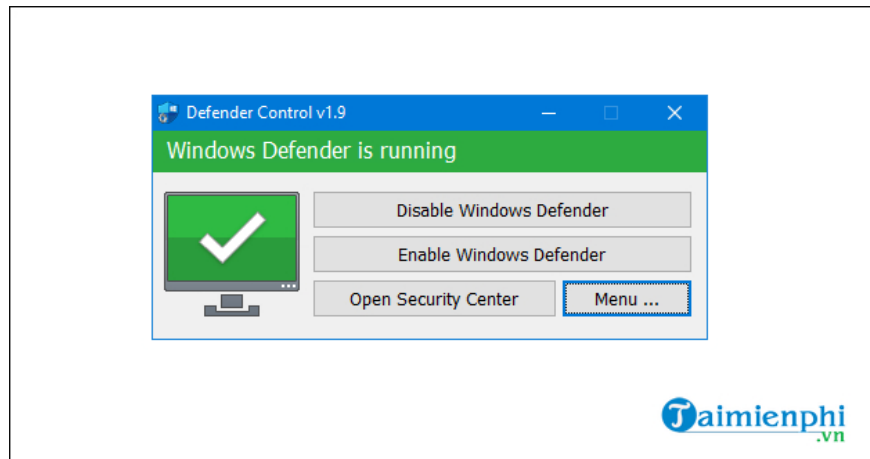
Defender Control is a compact, lightweight tool designed to help you control Windows Defender more easily, with two basic functions: turning Windows Defender on and off. To disable Windows Defender on Windows 10 using Defender Control software, do the following:

Step 1: Download **Defender Control** according to the link below => Click [**Link File 1**] .

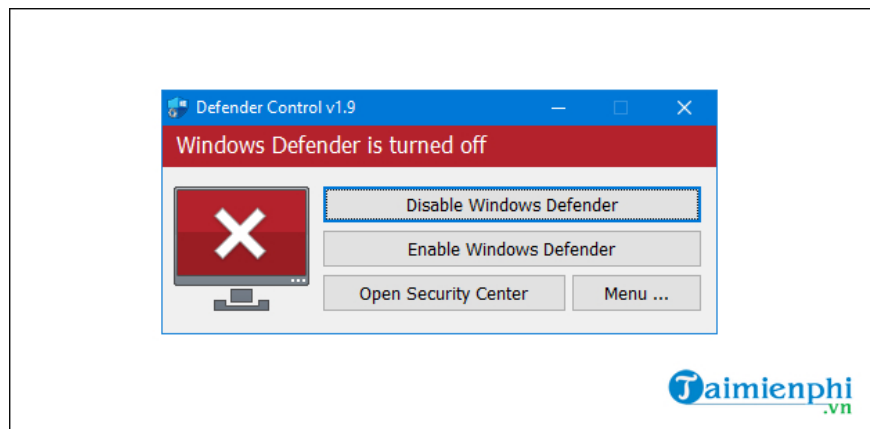
- Link to download **Defender Control 2024** here.

Step 2: Unzip the downloaded file => Double click on the **DefenderControl.exe** file to launch the software.

Step 3: Defender Control's interface will have the green text **Windows Defender is running**, indicating that this software is active. Click **Disable Windows Defender** to disable the security program.



If the red text **Windows Defender is off** appears, it shows that you have successfully turned off Windows Defender on Windows 10.



Method 5: Turn off Windows Defender on Windows 10 with antivirus software

Windows Defender is a security service built into Windows 10. However, it is programmed to automatically turn off if you install 3rd party **anti-virus software** to avoid software conflicts that cause the computer to stop suddenly. Therefore, you can take advantage of this feature to quickly turn off Windows Defender on Windows 10. But if you later remove the anti-virus software, Windows Defender will automatically be turned back on to protect your computer.



Hopefully with the 5 ways to turn off Windows Defender on Windows 10 above, you can safely install other anti-virus software on your computer as well as speed up a bit when turning off this automatic application. Similar to Windows 11, you can completely turn off Windows Defender to remove this application's notifications without any trouble, the way to **turn off Windows Defender in Windows 11** is completely similar.

You finished reading the article "**How to turn off Windows Defender on the latest Windows 10 2024**" edited by the [TipsMake](#) team. We hope this article has provided you with many useful tech tips and tricks. You can search for similar articles on tips and guides. Thank you for reading and for following us regularly.