

# How to turn off Wi-Fi when connecting to Ethernet in Windows 10

The use of Wi-Fi on mobile devices and computers is extremely convenient, but on the flip side is very battery consuming. Therefore, whenever you can use Ethernet (wired network), you should make the most of it. However, the problem here is that Windows does not automatically disconnect from Wi-Fi every time you plug in an Ethernet network. So in this article, TipsMake.com will guide you to do that.

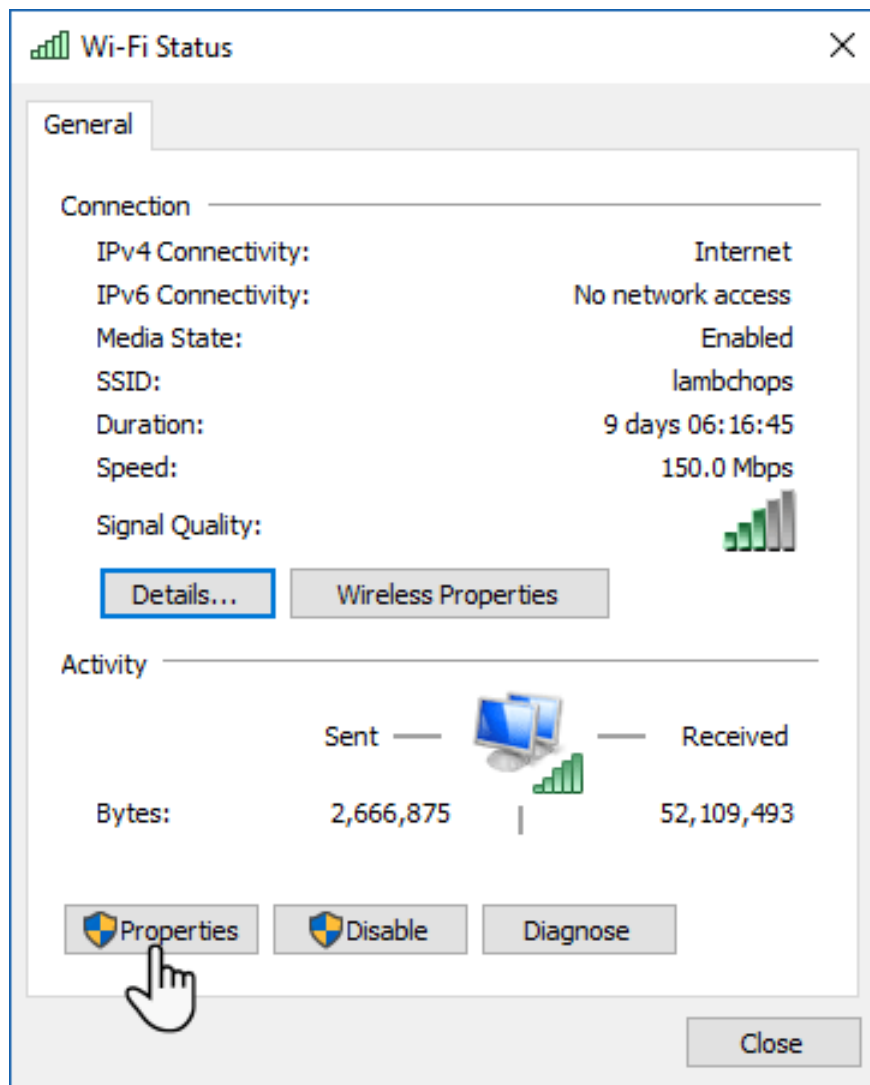
The use of Wi-Fi on mobile devices and computers is extremely convenient, but on the flip side is very battery consuming. Therefore, whenever you can use Ethernet (wired network), you should make the most of it. However, the problem here is that Windows does not automatically disconnect from Wi-Fi every time you plug in an Ethernet network. So in this article, TipsMake.com will guide you to do that.

## Turn off Wi-Fi when plugging in an Ethernet cord

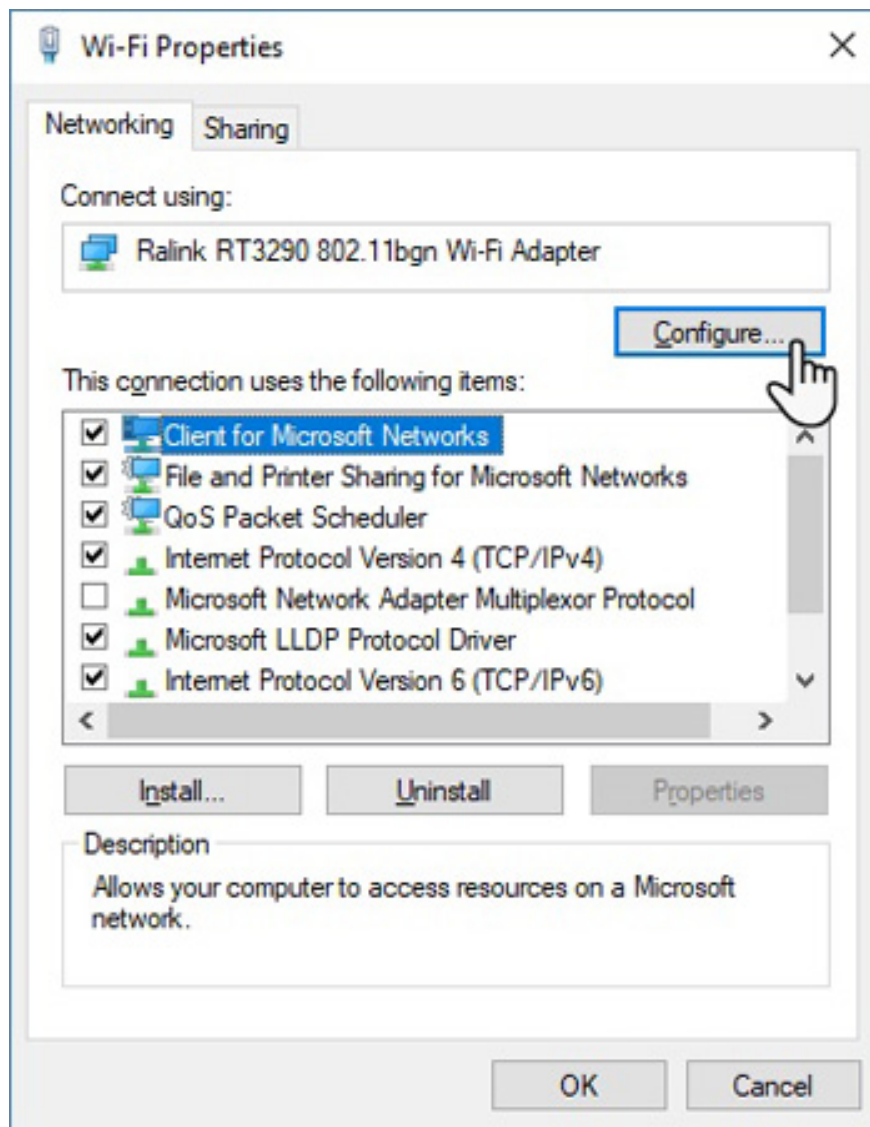
This is a pretty simple trick. First, make sure you connect your computer to Wi-Fi.

Go to the **System Tray** icon and click on the **Open Network and Sharing Center** . Alternatively, you can type **ncpa.cpl** in the **Run** box to open **Network Connections** .

Click the adapter icon for Wi-Fi connection. The **Wi-Fi Status** window will appear, click **Properties**.



In the Wi-Fi Properties window, click the **Network** tab and select **Configure**.



In the new window, switch to the **Advanced** tab . All Wireless Adapter Properties are displayed as a list. Find **Disable Upon Wired Connect** . Then, select **Enabled** from the Value menu drop down on the right side. Finally, click **OK**.

**Note:** The 'Disable Upon Wired Connect' section is a wireless network adapter property and it may not be displayed if the adapter is not supported.

Besides, you can use third-party software like Wireless AutoSwitch to do the same job.

1. How to cut videos on Windows 10 without software?
2. How to change the default Windows 10 font

Does your network adapter support turning off Wi-Fi when connecting to a wired network? Try checking and setting up to use the battery for longer!

You finished reading the article "**How to turn off Wi-Fi when connecting to Ethernet in Windows 10**" edited by the [TipsMake](#) team. We hope this article has provided you with many useful tech tips and tricks. You can search for similar articles on tips and guides. Thank you for reading and for following us regularly.

---

