

How to turn off Ultraviewer starts with the computer

Turning off Ultraviewer to start up with the computer will speed up the computer, making the computer boot faster.

When using Ultraviewer on the computer, the software is always started by default with Windows. This default setting is not only available for Ultraviewer but also for many software when you install it on your computer. This in part makes the boot speed significantly reduced, when multiple programs are started at the same time.

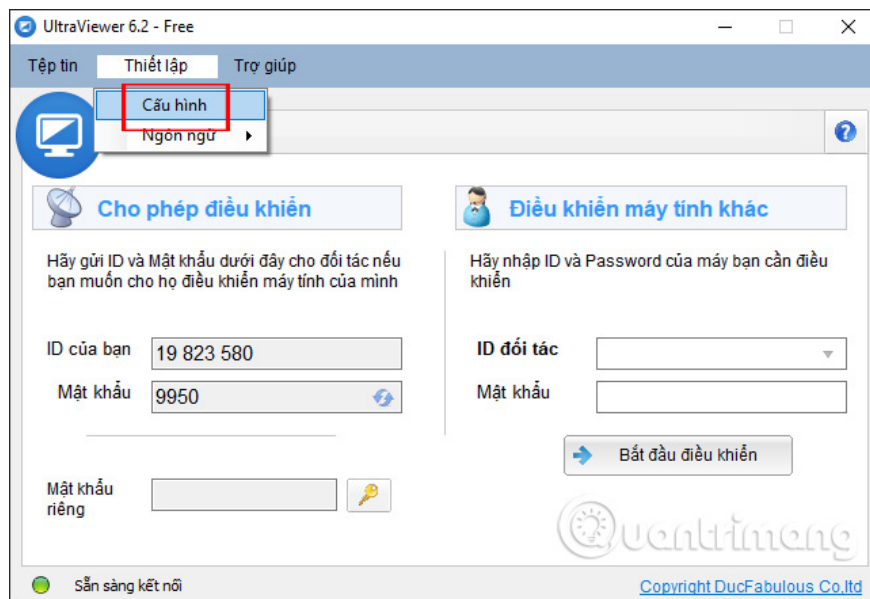
The slow start up of a computer can be caused by many reasons, such as installing too much software, not cleaning the computer, or if using it for a long time, the hard drive life will also affect the boot of the computer. And one reason for most computers is that many software start up simultaneously with Windows without users knowing. So we need to check the installation of the software, and turn off the startup mode with Windows to speed up the computer. The following article will guide you how to turn off Ultraviewer to start with your computer.

1. Start Windows 10 "as fast as the wind" with Fast Startup
2. How to make Windows boot faster
3. 13 easy ways to free RAM make the machine run faster
4. How to speed up the launch of Desktop application on Windows 10

How to turn off Ultraviewer to start with Windows

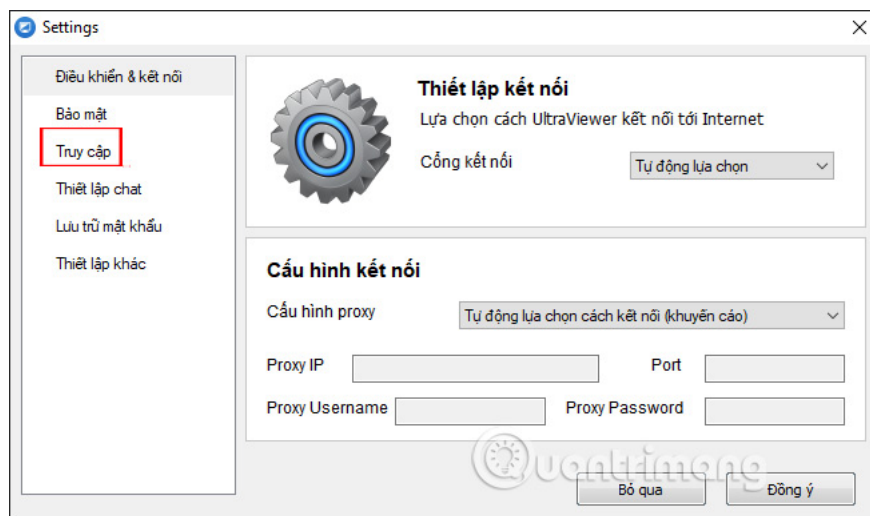
Step 1:

We start the Ultraviewer software and then click **the Settings** menu and select **Configuration** .



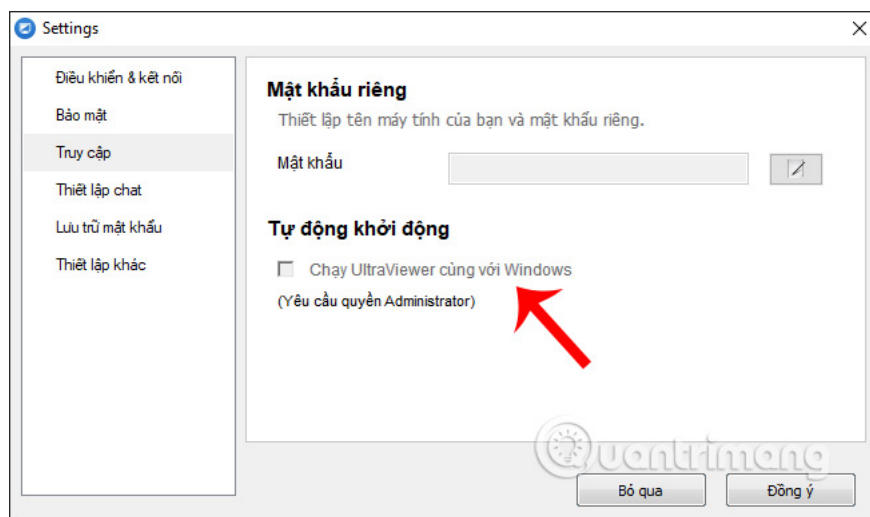
Step 2:

Switch to the new interface, we click on the **item Access** in the list on the left of the interface.

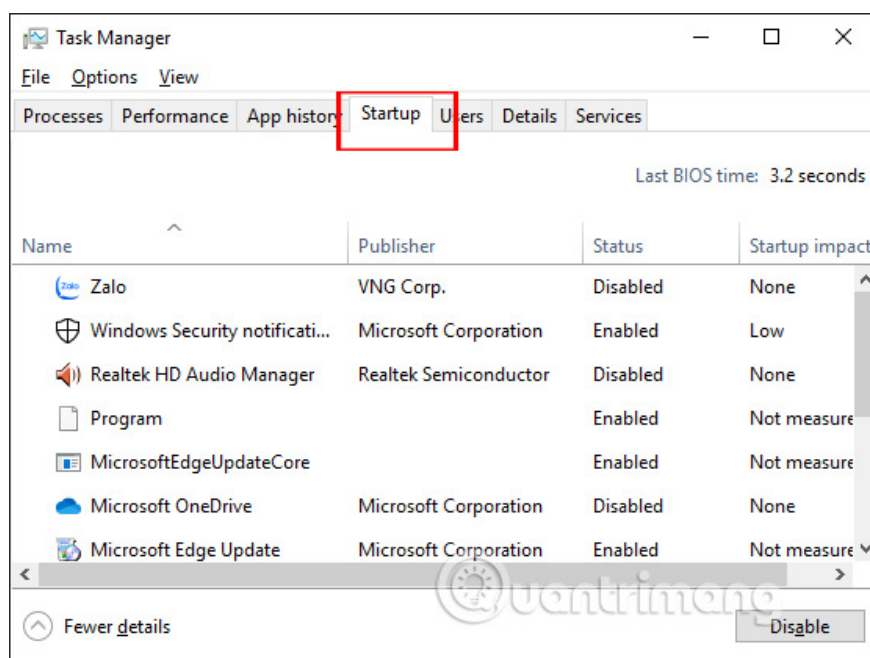


Step 3:

Look to the right and **uncheck the Run UltraViewer option with Windows in Auto-start**. Finally click the **OK button** to save the new settings for the software.



Not only with Ultraviewer, but with other software users should also turn off the open mode with Windows. We can access the Task Manager directly to check if any software is being started with the computer. From there, disable this mode for many software if you want, but you do not need to change the settings for each software. Refer to how to do this in the article [Turn off programs that start with the system on Windows 10](#).



I wish you all success!

You finished reading the article "**How to turn off Ultraviewer starts with the computer**" edited by the [TipsMake](#) team. We hope this article has provided you with many useful tech tips and tricks. You can search for similar articles on tips and guides. Thank you for reading and for following us regularly.