

# How to turn off the Skype feature automatically starts with the computer

Skype for PC version automatically activates the startup feature with the computer when you maintain the login status. This inadvertently leads to a slow machine, slowing down and affecting the process we use computers.

Immediately after successful installation of Skype software on the computer, the startup feature with the computer will automatically be activated. However, with a low-configuration machine, there is a slow startup status. Or if the computer is infected with virus and associated with Skype, it will also make the computer sluggish at startup.

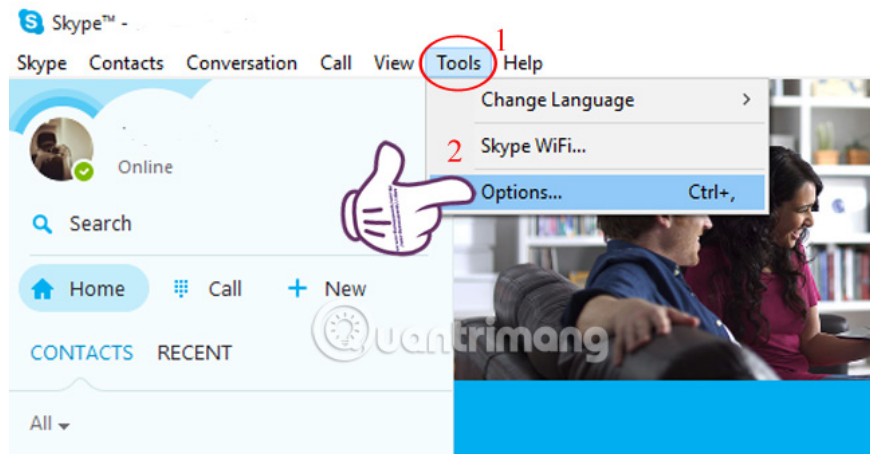
The safe solution is to turn off the startup feature with Windows, to limit computer freezing. In this article, Network Administrator will guide you through simple steps to disable Skype booting with your computer.

## Step 1:

You start and access your Skype account on your computer.

## Step 2:

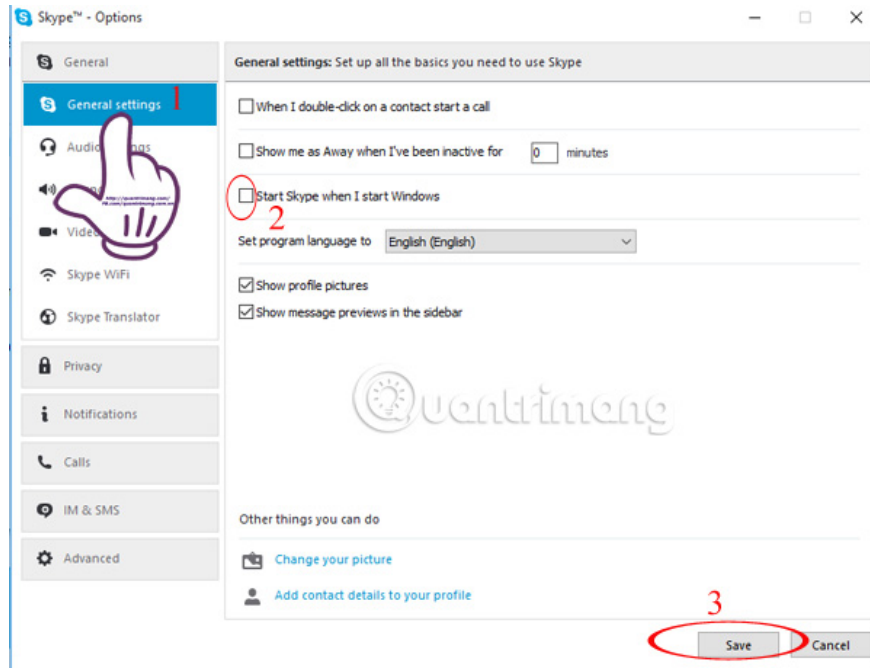
At the main interface of Skype, we select the **Tools** tab and click **Options** . Or you can use **Ctrl + ",** to access Options.



## Step 3:

Appearance of Options. Here, you will click on **General Settings** and uncheck the box: **Start Skype when I Start Windows - Start Skype with the computer** .

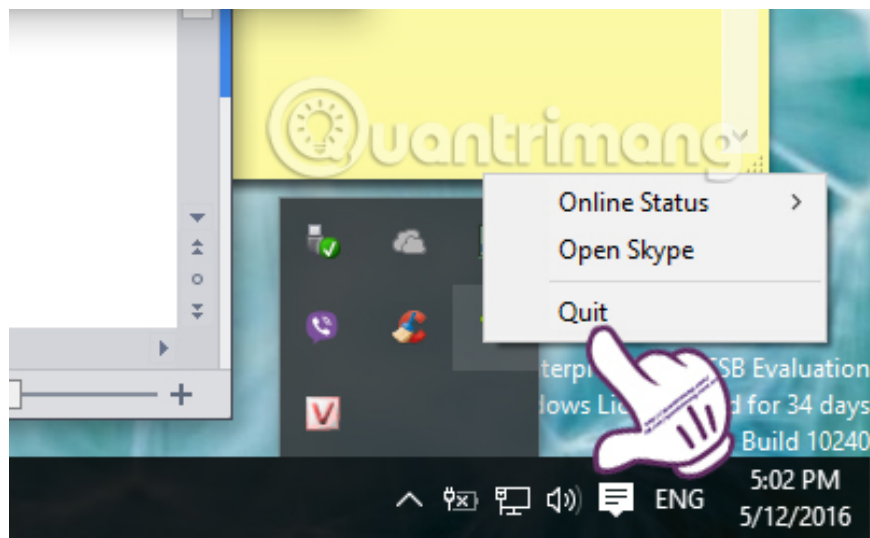
Finally click **Save** to save the new settings.



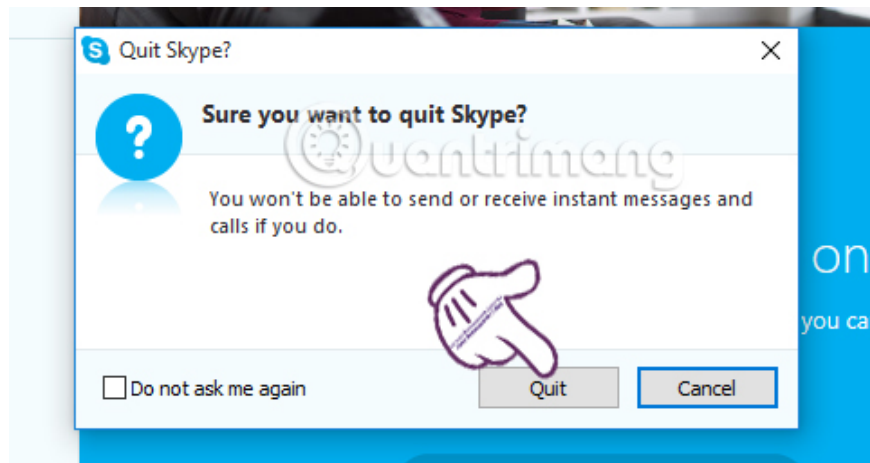
## Step 4:

If you no longer want to use Skype, you can uninstall it on your computer or exit your personal account completely.

Right-click **the Skype icon in the taskbar** , select **Quit Skype** .



Soon a message will appear saying whether you are sure to exit Skype. When exiting, we will not be able to send messages, or receive any news from others. Click **Quit** to exit.



So, you do not worry about the computer having problems such as slow start-up, sluggishness due to your friend Skype. In addition, if users want to speed up the computer effectively, can refer to the article 8 how to release Ram to help the computer run better, or use CCleaner software is also effective.

### **Refer to the following articles:**

1. Guide to chat with lots of Skype nick on the same computer
1. Create audio and video group calls in Skype on Windows 8.1
1. How to fix Skype has stopped working

### **I wish you all success!**

You finished reading the article "**How to turn off the Skype feature automatically starts with the computer**" edited by the [TipsMake](#) team. We hope this article has provided you with many useful tech tips and tricks. You can search for similar articles on tips and guides. Thank you for reading and for following us regularly.