

How to turn off the hard drive after not working in Windows 10

Installing Turn Off Hard Disk After in Power Options allows the user to set the power to the hard drive (HDD) to be turned off, after detecting it has been inactive for a period of time. This setting will not affect SSD or NVMe drives.

Installing **Turn Off Hard Disk After** in **Power Options** allows the user to set the power to the hard drive (HDD) to be turned off, after detecting it has been inactive for a period of time. This setting will not affect SSD or NVMe drives.

Leaving the hard drive turned off automatically after not using it can save energy and extend the PC's battery life.

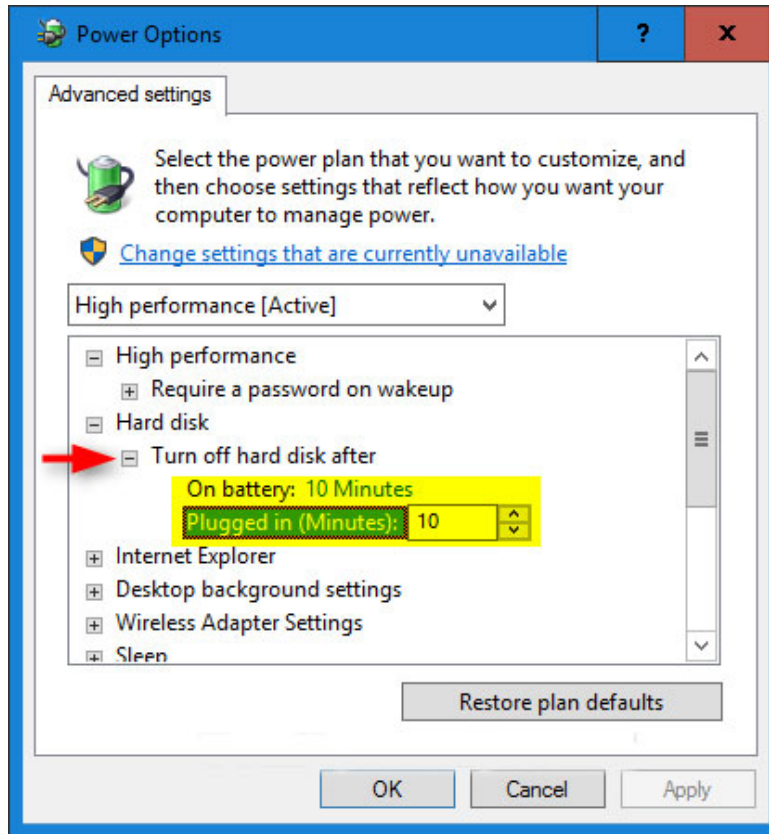
When you or anything trying to access the hard drive is turned off, there will be a few seconds of delay before the hard drive automatically returns to work and allows access.

This guide will show you how to turn off the hard drive after not using it for a specified few minutes or never in Windows 10.

Note : If you have set to turn off the hard drive after a period of inactivity, then you will experience a delay if you restart the explorer, because you will have to wait for all turned off drives to go back to work first. When explorer is restarted.

Option 1: Change the Turn Off Hard Disk After setting in Power Options

1. Open **Advanced settings** in **Power Options**.
2. Expand **Hard disk** and **Turn off hard disk after** , set the number of minutes or choose never (**Never**) for what you want and click **OK**.



Set the number of minutes or choose Never

Note : The default option is 20 minutes. Do not set the number of minutes low. Doing so can cause more wear and tear on the hard drive as they will have to change their spin (spin up / spin down) more often.

Option 2: Change Turn Off Hard Disk After settings in Command Prompt

1. Open Command Prompt.
2. Type the command (s) you want to use below into the **Command Prompt** and press Enter .

When using batteries:

```
powercfg /SETDCVALUEINDEX SCHEME_CURRENT 0012ee47-9041-4b5d-9b77-535fba8b1442 67
```

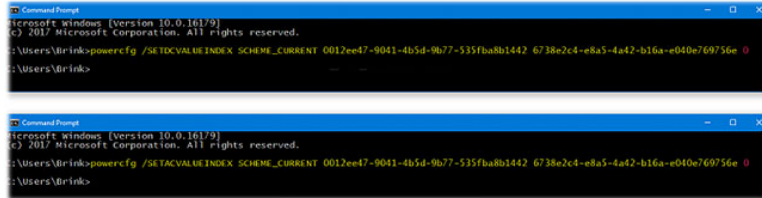
And / or when charging:

```
powercfg /SETACVALUEINDEX SCHEME_CURRENT 0012ee47-9041-4b5d-9b77-535fba8b1442 67
```

Note : Replace in the above commands with the number of seconds you want to wait before turning off the hard drive.

Using zero seconds will be the same as selecting "**Never**".

The default data value is 1200 seconds (20 minutes).



```
Command Prompt
Microsoft Windows [Version 10.0.16179]
(c) 2017 Microsoft Corporation. All rights reserved.

C:\Users\Brink>powercfg /setacvalueindex SCHEME_CURRENT 0012ee47-9041-4b5d-9b77-535fba8b1442 6738e2c4-e8a5-4a42-b16a-e040e769756e 0

C:\Users\Brink>
```

```
Command Prompt
Microsoft Windows [Version 10.0.16179]
(c) 2017 Microsoft Corporation. All rights reserved.

C:\Users\Brink>powercfg /setacvalueindex SCHEME_CURRENT 0012ee47-9041-4b5d-9b77-535fba8b1442 6738e2c4-e8a5-4a42-b16a-e040e769756e 0

C:\Users\Brink>
```

Change Turn Off Hard Disk After settings in Command Prompt

You finished reading the article "**How to turn off the hard drive after not working in Windows 10**" edited by the [TipsMake](#) team. We hope this article has provided you with many useful tech tips and tricks. You can search for similar articles on tips and guides. Thank you for reading and for following us regularly.