

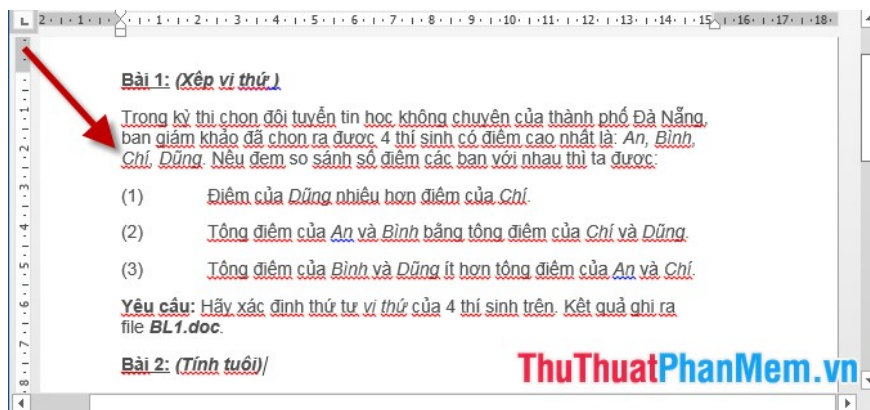
How to turn off spell checking in Word, Powerpoint (remove the red underline in Word)

When editing Word documents, you often see the underlined error under the word makes the text confused, unfriendly, and the way to fix is ??to turn off the spell checking function. The following article shows how to turn off spell checking in Word, Powerpoint

In the process of writing a text, you often see errors underlined in words make text confused, unfriendly. The solution is very simple, turn off the spell check function. The following article shows **how to turn off spell checking in Word, Powerpoint**

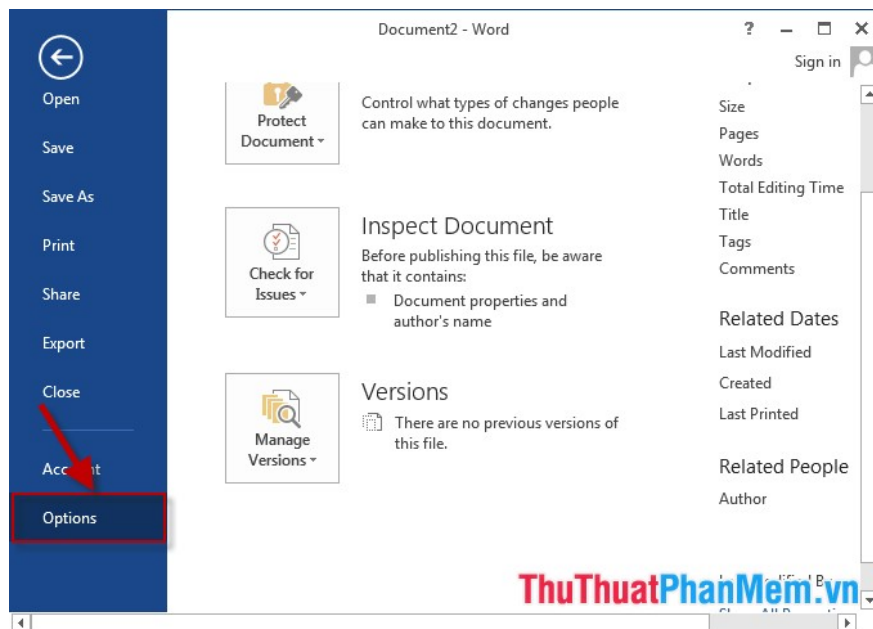
Turn off the spell check function in Word

For example, when you turn on the spell-checking feature, your text content often has a red underline that looks very confusing:



To turn off the feature you do the following:

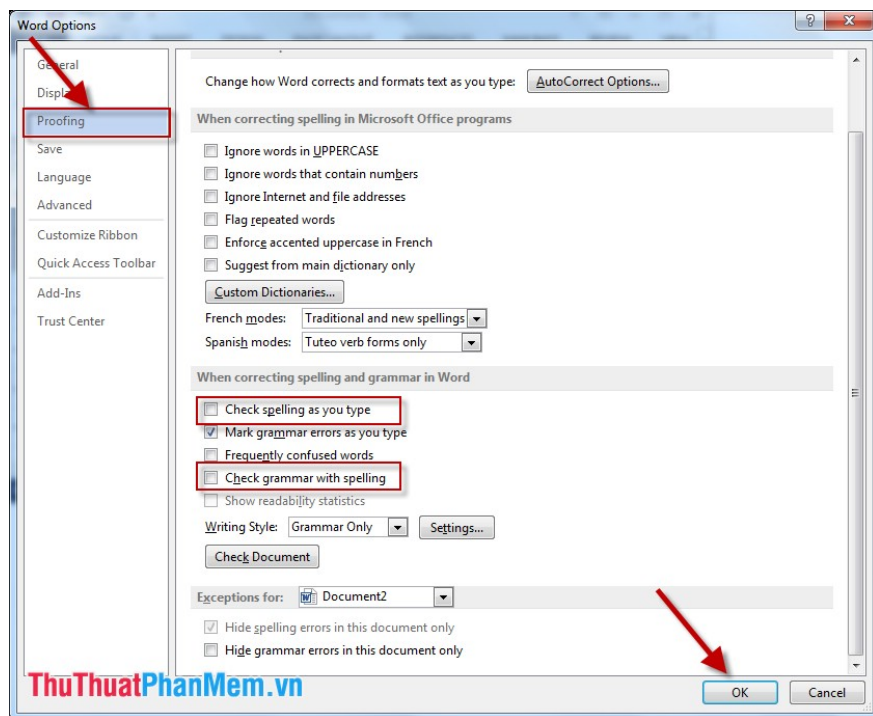
Step 1: On the card **File -> Options:**



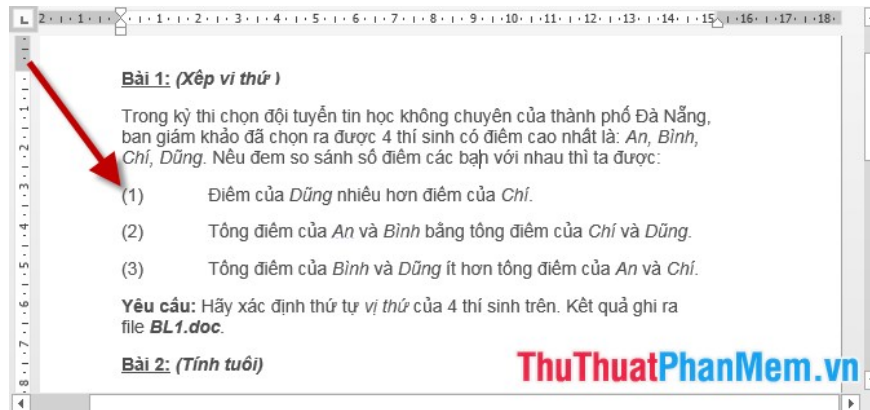
Step 2: The Word Option dialog box appears, select **Proofing** and uncheck the 2 items:

- Check spelling as you type
- Check grammar with spelling.

Finally, click **OK**:



Step 3: Return to the content text file that has been underlined:



Similarly to turn off the spell check feature in **Powerpoint** you do the same operation.

Above is a detailed guide on **how to turn off spell checking in word, powerpoint** . Good luck!

You finished reading the article "**How to turn off spell checking in Word, Powerpoint (remove the red underline in Word)**" edited by the [TipsMake](#) team. We hope this article has provided you with many useful tech tips and tricks. You can search for similar articles on tips and guides. Thank you for reading and for following us regularly.