

How to turn off password request after Sleep on Windows 11

Sleep is a mode that helps you keep your computer running, ready to use it again when needed without consuming too much power.

However, for those who often have to sleep the computer to do other work, entering the password every time they come back takes a lot of time.

So is there a way to disable the password every time the Windows 11 computer is woken from Sleep mode? Let's go find the answer.

Why do you need a password after waking your Windows 11 computer from Sleep?

Simply put, this feature helps you protect the data stored on your computer. Without it, bad guys can easily wake up your Windows 11 computer and then access it to rummage, steal data or sabotage what you're doing.

So is it safe to disable the password when waking up a Windows 11 computer?

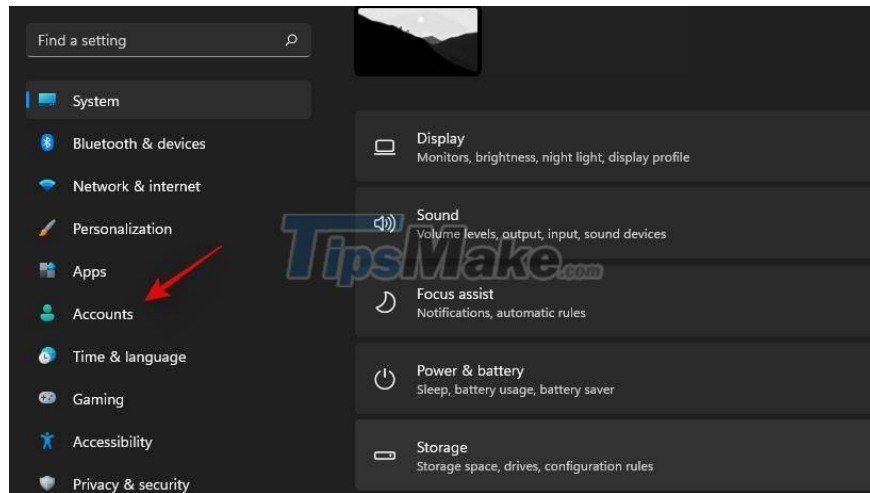
The answer depends on your work environment. If you regularly work in a safe environment, this should not have a bad effect. However, be careful if your work environment is not very safe.

How to turn off Windows 11 computer password when waking from Sleep mode

Depending on the situation, you can do this in a number of different ways. However, if your computer is stable, without any errors, you should use the adjustment method using the Settings application right below:

Method 1: Use the Settings app

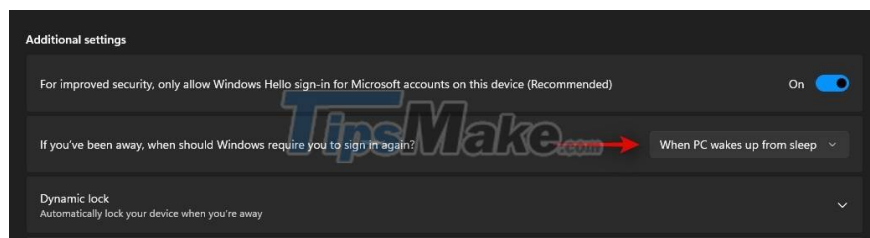
You press Win + I to open Settings then click on Accounts in the left sidebar.



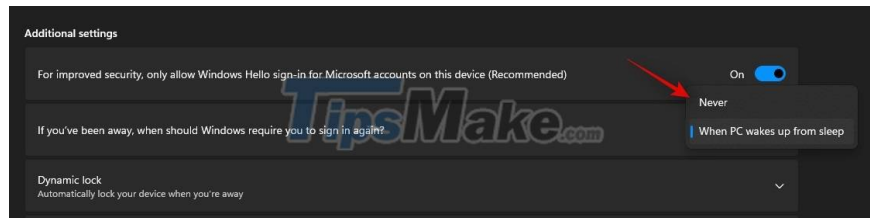
Click Sign-in options.



Find the option If you've been away, when should Windows require you to sign in again? in the Additional settings section.



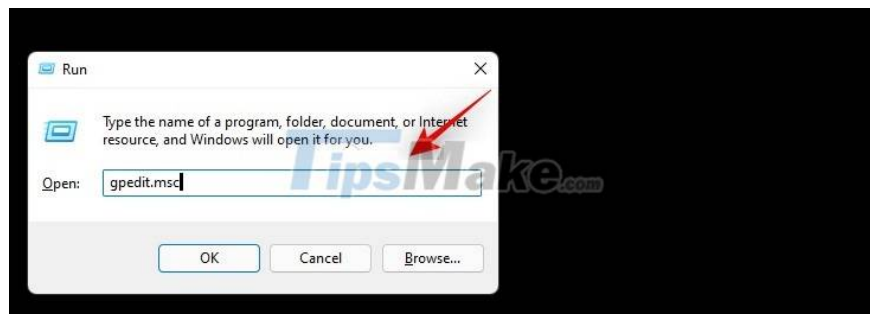
Click the drop-down arrow where When PC wakes up from sleep and then select Never.



Close the Settings app and then restart your computer. From now on, your computer will no longer ask you for a password every time you wake up from Sleep mode.

Method 2: Use Group Policy Editor (not applicable to Windows 11 Home)

Press Win + R on your keyboard then type gpedit.msc and then press Enter.



In the Group Policy Editor window, navigate to the following folder:

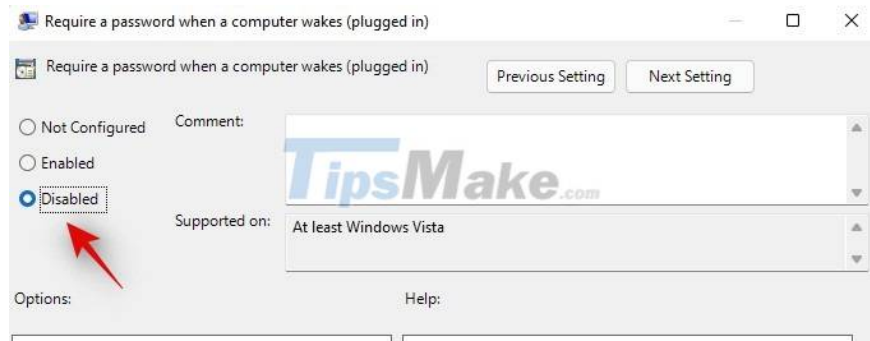
Computer Configuration > Administrative Templates > System > Power Management > Sleep Settings



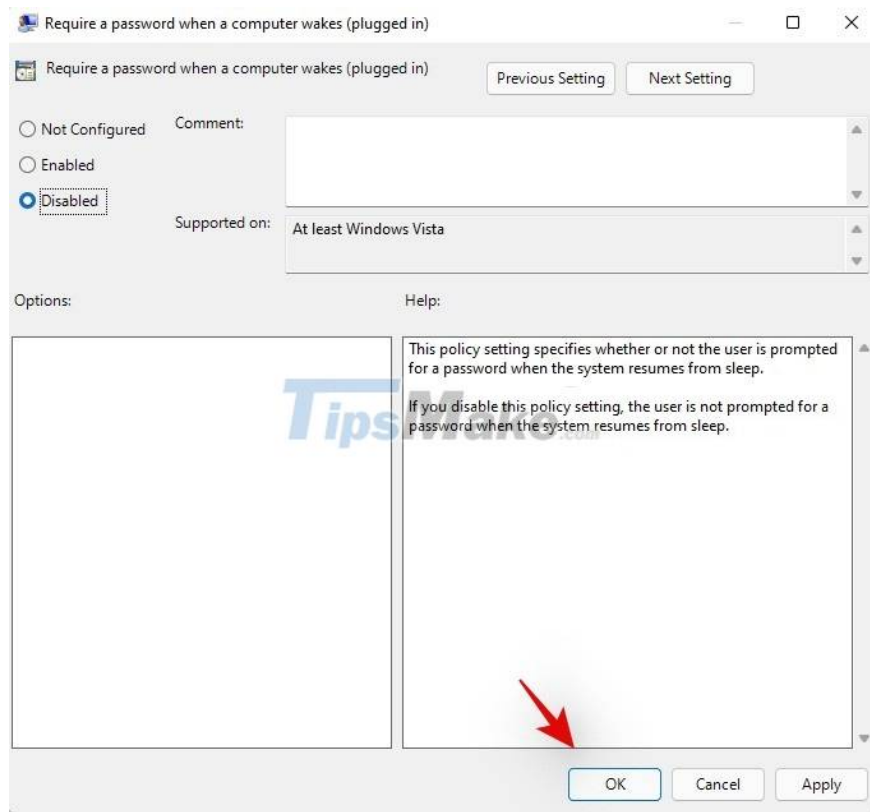
Find and double-click the value named Require a password when a computer wakes (plugged in).

Setting	State	Comment
Allow network connectivity during connected-standby (plugged in)	Not configured	No
Turn on the ability for applications to prevent sleep transition (plugged in)	Not configured	No
Specify the system hibernate timeout (plugged in)	Not configured	No
Require a password when a computer wakes (plugged in)	Not configured	No
Specify the system sleep timeout (plugged in)	Not configured	No
Turn off hybrid sleep (plugged in)	Not configured	No
Allow standby states (S1-S3) when sleeping (plugged in)	Not configured	No
Allow standby states (S1-S3) when sleeping (on battery)	Not configured	No
Allow applications to prevent automatic sleep (plugged in)	Not configured	No
Allow applications to prevent automatic sleep (on battery)	Not configured	No
Allow automatic sleep with Open Network Files (plugged in)	Not configured	No
Allow automatic sleep with Open Network Files (on battery)	Not configured	No

Select Disable



Then click OK to save the settings.



Now you do the same with the Require a password when a computer wakes (on battery) value.

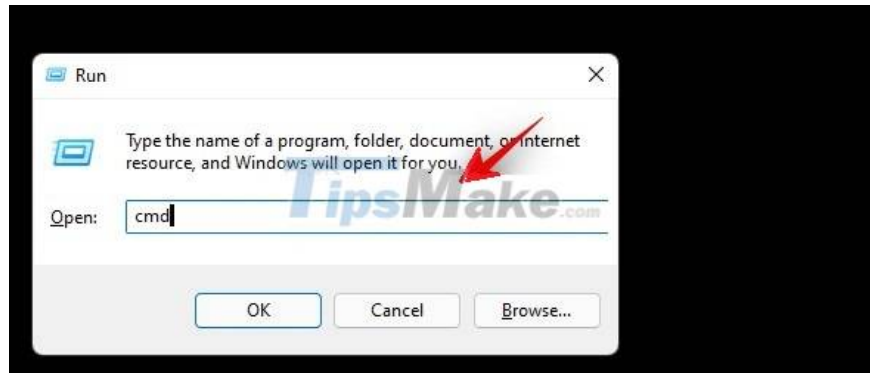


It is done!

Method 3: Use CMD

You can also use CMD to disable the password every time you wake up your Windows 11 computer. The steps are as follows:

Press Win + R to open Run then type CMD. Press Ctrl + Shift + Enter to open CMD with Admin rights.



Type the following command and then press Enter:

```
powercfg /SETDCVALUEINDEX SCHEME_CURRENT SUB_NONE CONSOLELOCK 0
```



Enter the following command and then press Enter:

```
powercfg /SETACVALUEINDEX SCHEME_CURRENT SUB_NONE CONSOLELOCK 0
```

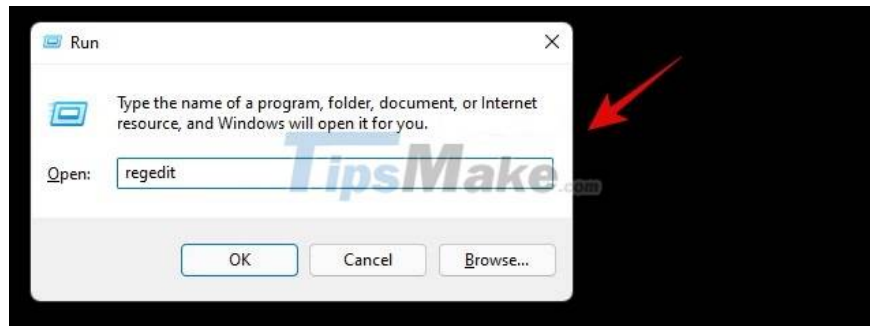


After the commands have finished running, you just need to restart the machine to complete the installation process.

Method 4: Use Registry Editor

Of course, the Registry Editor can also control this problem.

Press Win + R to open Run then type regedit and then press Enter.



In the Registry Editor window, navigate to the Microsoft folder according to the following path:

Computer\HKEY_LOCAL_MACHINE\SOFTWARE\Policies\Microsoft



Right-click an empty space and select New.



Select Key and then rename the folder to Power.



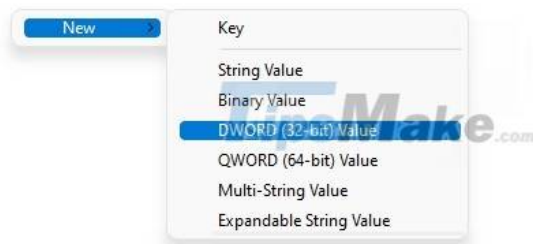
Right-click on the newly created Power folder and select New > Key then name this new folder PowerSettings.



Select the PowerSettings folder then right-click the empty space on the right and select New.



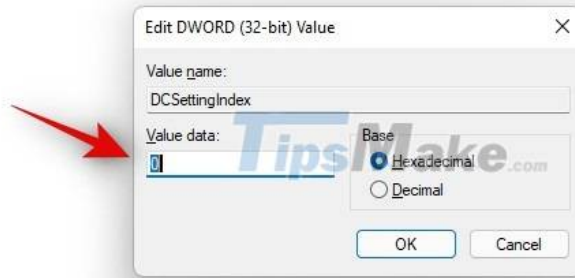
Click DWORD (32-bit) Value.



Name this value DCSettingIndex.



Double-click DCSettingIndex and then enter 0 in the Value data box and then click OK.



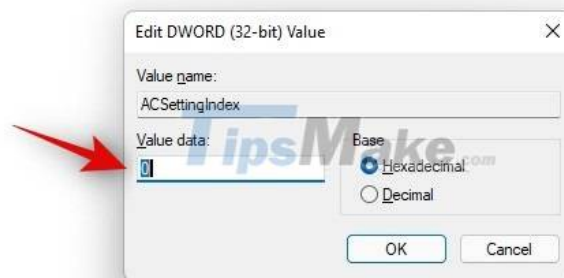
Continue to right-click on the empty space and then select New > DWORD (32-bit) Value.



This time, name the value ACSettingIndex.

Name	Type	Data
(Default)	REG_SZ	(value not set)
DCSettingIndex	REG_DWORD	0x00000000 (0)
ACSettingIndex	REG_DWORD	0x00000000 (0)

Double-click ACSettingIndex and then enter 0 in the Value data box and then click OK.



Once done, exit Registry Editor and then restart your computer to complete the installation.

How to stay safe after disabling the password

Because you've disabled the need to enter a password every time you wake up from Sleep, anyone can access your Windows 11 computer every time you go to sleep and then go out. Therefore, you need to maintain safety with a few tips below:

1. Always turn off your computer if you have to go out for too long

If you have to go out for too long, you need to turn off the computer instead of just Sleep. This will prevent bad guys from getting access to your computer while you do your work outside.

2. Dynamic Lock mode setting

You can set up a Windows 11 computer to lock itself using Dynamic Lock.

Is Dynamic Lock really secure?

In terms of security, Dynamic Lock is not very secure because it is just a backup protection measure. TipsMake.com recommends against relying too much on Dynamic Lock. This feature is only really safe if you lock your computer as soon as you are no longer around within a meter or two instead of the connection range of Bluetooth waves (maybe up to several tens of meters).

You finished reading the article "**How to turn off password request after Sleep on Windows 11**" edited by the [TipsMake](#) team. We hope this article has provided you with many useful tech tips and tricks. You can search for similar articles on tips and guides. Thank you for reading and for following us regularly.