

How to turn off Folder Type Discovery Windows 11

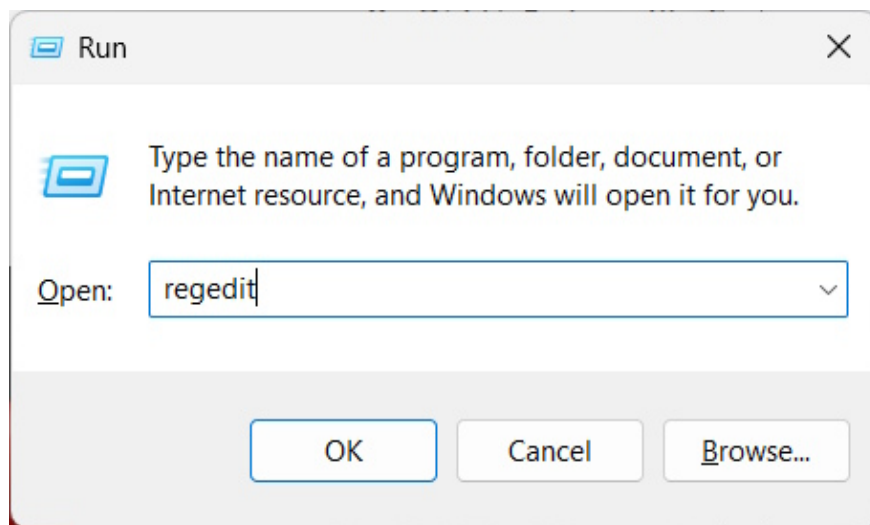
When the folder contains few documents, it is recommended to turn on Folder Type Discovery. If the folder contains hundreds of files, you can also turn off Folder Type Discovery.

Windows automatically detects the contents of a folder and assigns a type to it. When a folder contains few documents, it is recommended to enable automatic detection of the folder type. If the folder contains hundreds of files, you can also disable this setting to reduce the time it takes to open the folder. Below are instructions for turning off Folder Type Discovery Windows.

Instructions to turn off Folder Type Discovery Windows 11

Step 1:

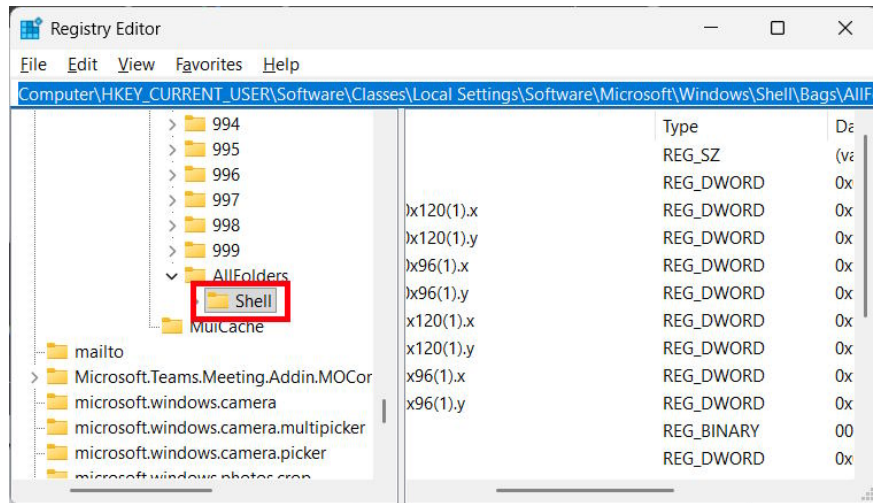
We open Windows + R to open the Run dialog box. Next, **type regedit** in Run and press OK to open Registry Editor.



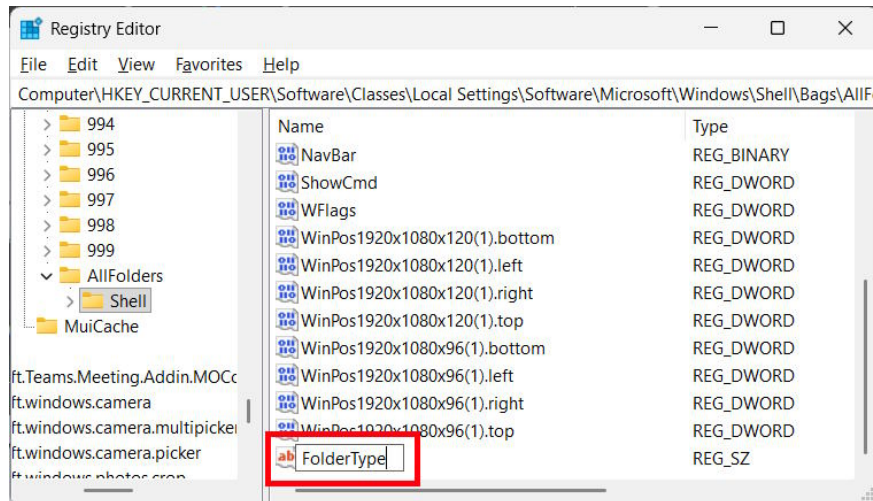
Step 2:

Next, you access the link below.

```
Computer\HKEY_CURRENT_USER\Software\Classes\Local  
Settings\Software\Microsoft\Windows\Shell\Bags\AllFolders\Shell
```

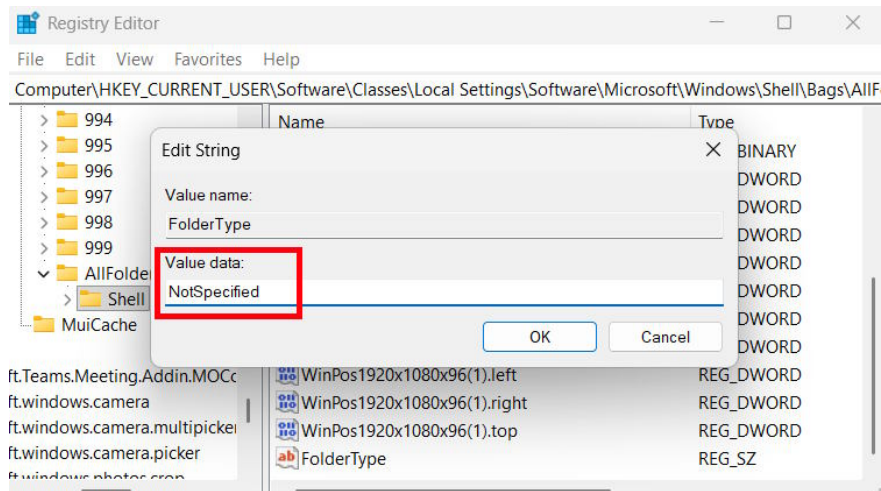


Look to the right, **right-click** on the white space and **select New > String Value** to create a new string and **name it FolderType** .



Step 3:

Double-click on the FolderType value, then enter **NotSpecified** for this string and click OK to save.



Once complete, File Explorer no longer wastes time scanning each file to decide how to display folder contents.

If you want to enable File Discovery, delete the FolderType string directly in Registry Editor.

You finished reading the article "**How to turn off Folder Type Discovery Windows 11**" edited by the [TipsMake](#) team. We hope this article has provided you with many useful tech tips and tricks. You can search for similar articles on tips and guides. Thank you for reading and for following us regularly.