

How to Turn Off Copilot in Windows 11

Copilot is deeply integrated into Windows 11, but not everyone wants to use it. This article will guide you in detail how to completely disable Copilot in just a few simple steps.

Since its launch, Microsoft Copilot has become an increasingly prominent part of Windows 11. Originally a standalone application, Copilot is now deeply integrated into the operating system. It combines the power of Bing AI search with advanced language modeling, bringing a variety of support and productivity features right to the desktop.

In recent updates, Microsoft has also incorporated Copilot into the Windows 11 experience more clearly: a Copilot button appears on the taskbar for quick access, and on **Copilot+ PC** models there is even a physical Copilot key – showing that Microsoft is very serious about 'AI-izing' Windows in the future.

However, not everyone wants AI in their operating system. Some people are concerned about privacy, others prefer the traditional Windows experience, or simply find Copilot unhelpful. If you fall into this category and want to disable Copilot, the good news is that Microsoft still makes it pretty easy to do.

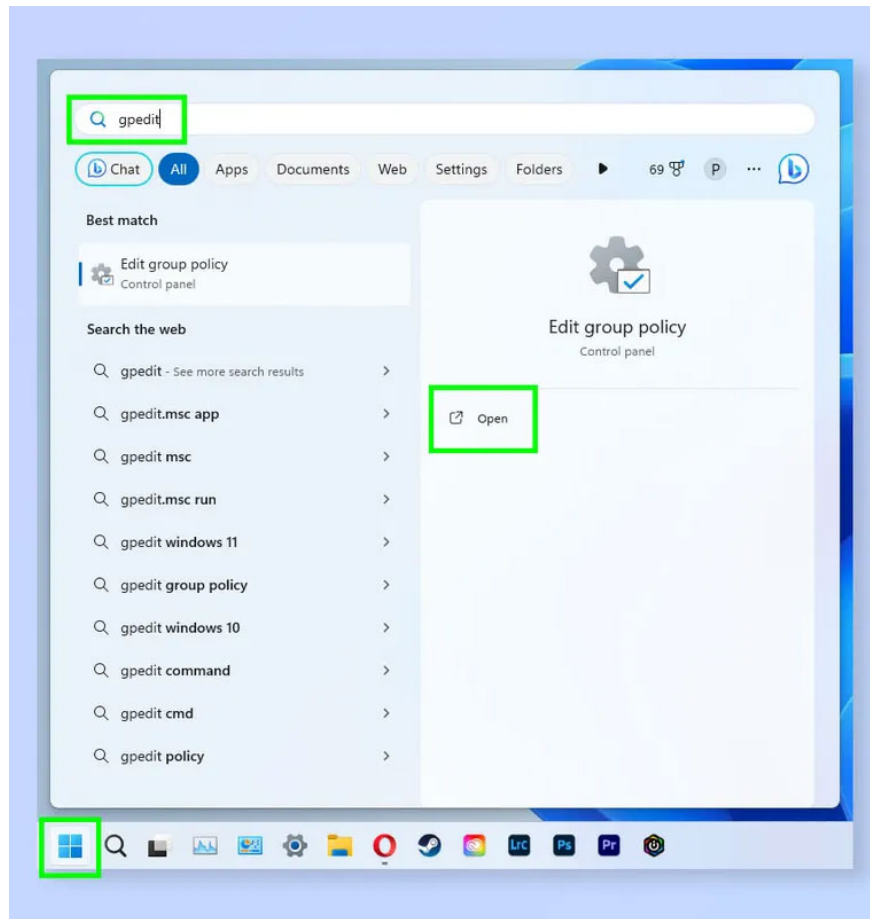
Here are detailed instructions.

How to Completely Disable Copilot in Windows 11

Note: If you want to re-enable Copilot later, simply reverse the steps below and select **Not configured** or **Disabled** in the last step.

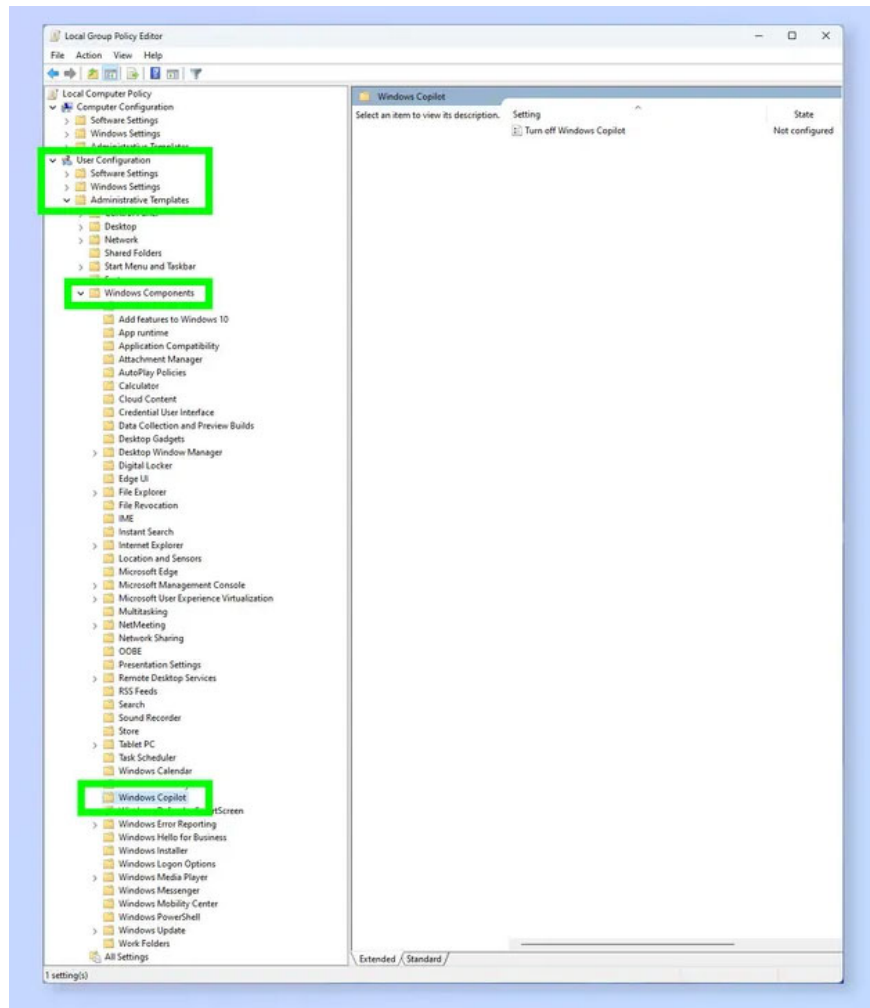
Step 1: Open Group Policy Editor

1. Click **Start** , type **gpedit**, then open **Group Policy Editor** when it appears.



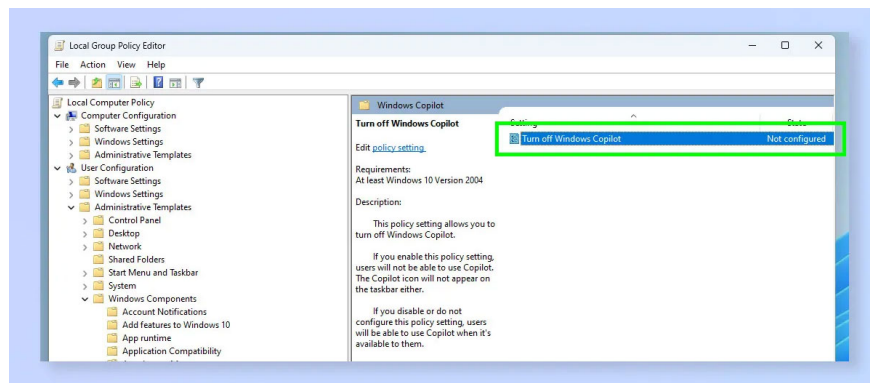
Step 2: Navigate to Windows Copilot

1. In the left pane, follow the path:
User configuration > Administrative templates > Windows components > Windows Copilot



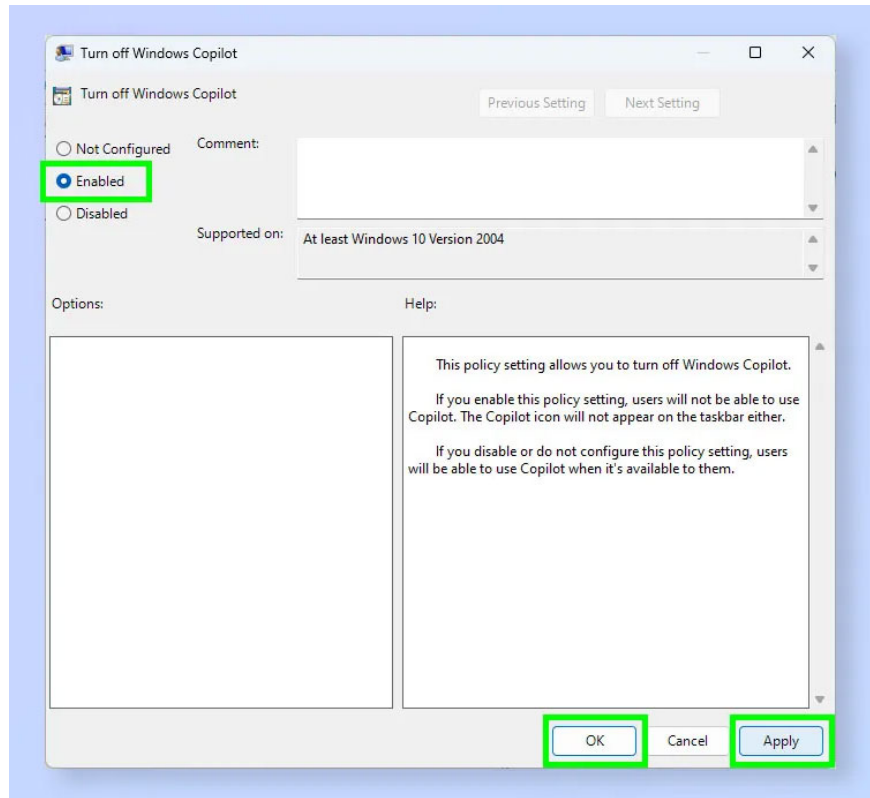
Step 3: Open 'Turn off Windows Copilot' settings

1. In the right pane, find and double-click the **Turn off Windows Copilot** option .



Step 4: Select 'Enabled' then Apply

1. Select **Enabled** , then click **Apply** and **OK** .
2. It may sound strange to select 'Enabled', but you are actually **enabling the Copilot disable policy** .



Should Copilot be turned off?

Copilot is actually a powerful tool if you know how to exploit it: you can quickly answer questions, support work, or control Windows with natural language. Therefore, you can consider taking advantage of Copilot for work as well as daily entertainment needs on your PC.

You finished reading the article "**How to Turn Off Copilot in Windows 11**" edited by the [TipsMake](#) team. We hope this article has provided you with many useful tech tips and tricks. You can search for similar articles on tips and guides. Thank you for reading and for following us regularly.